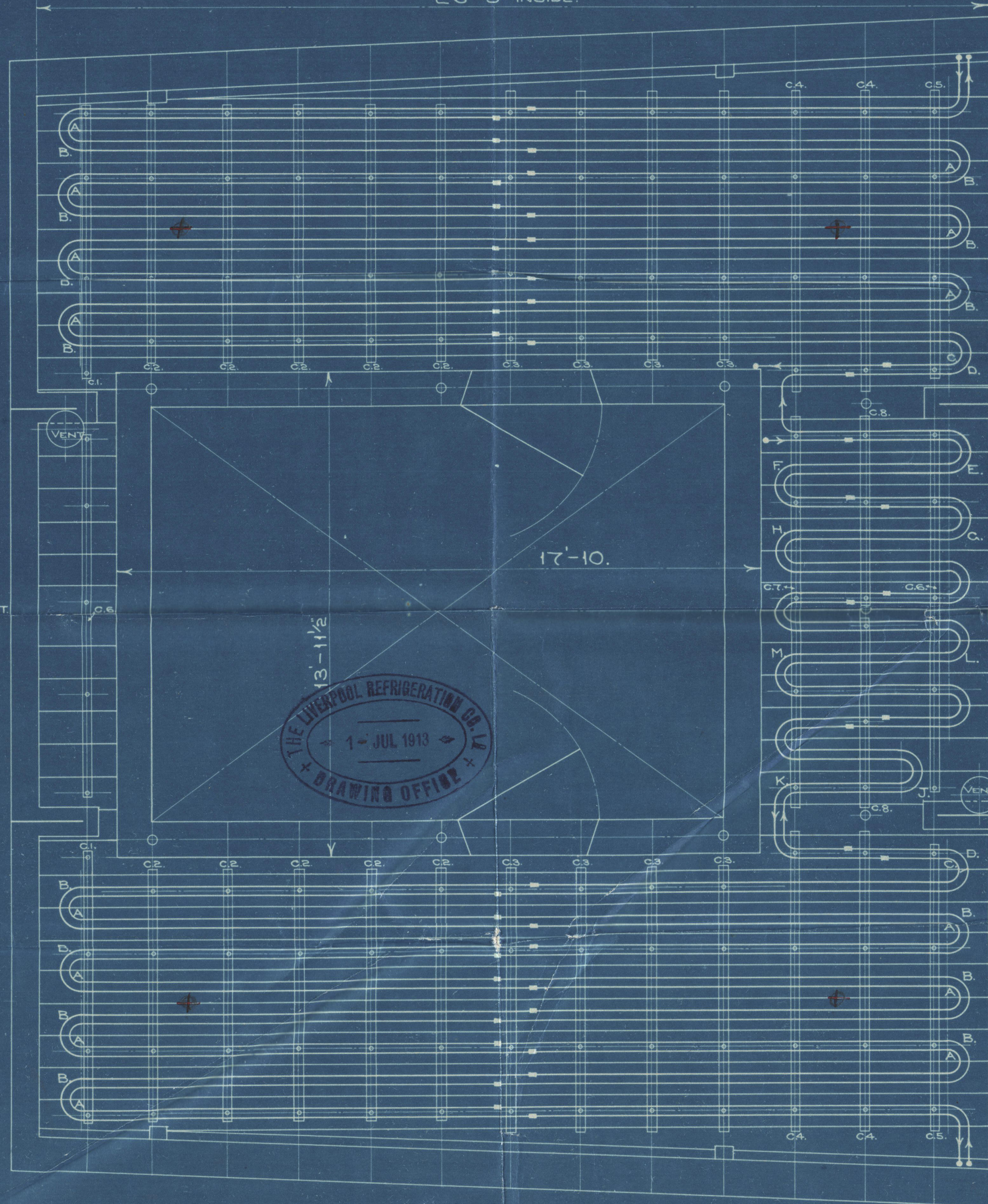
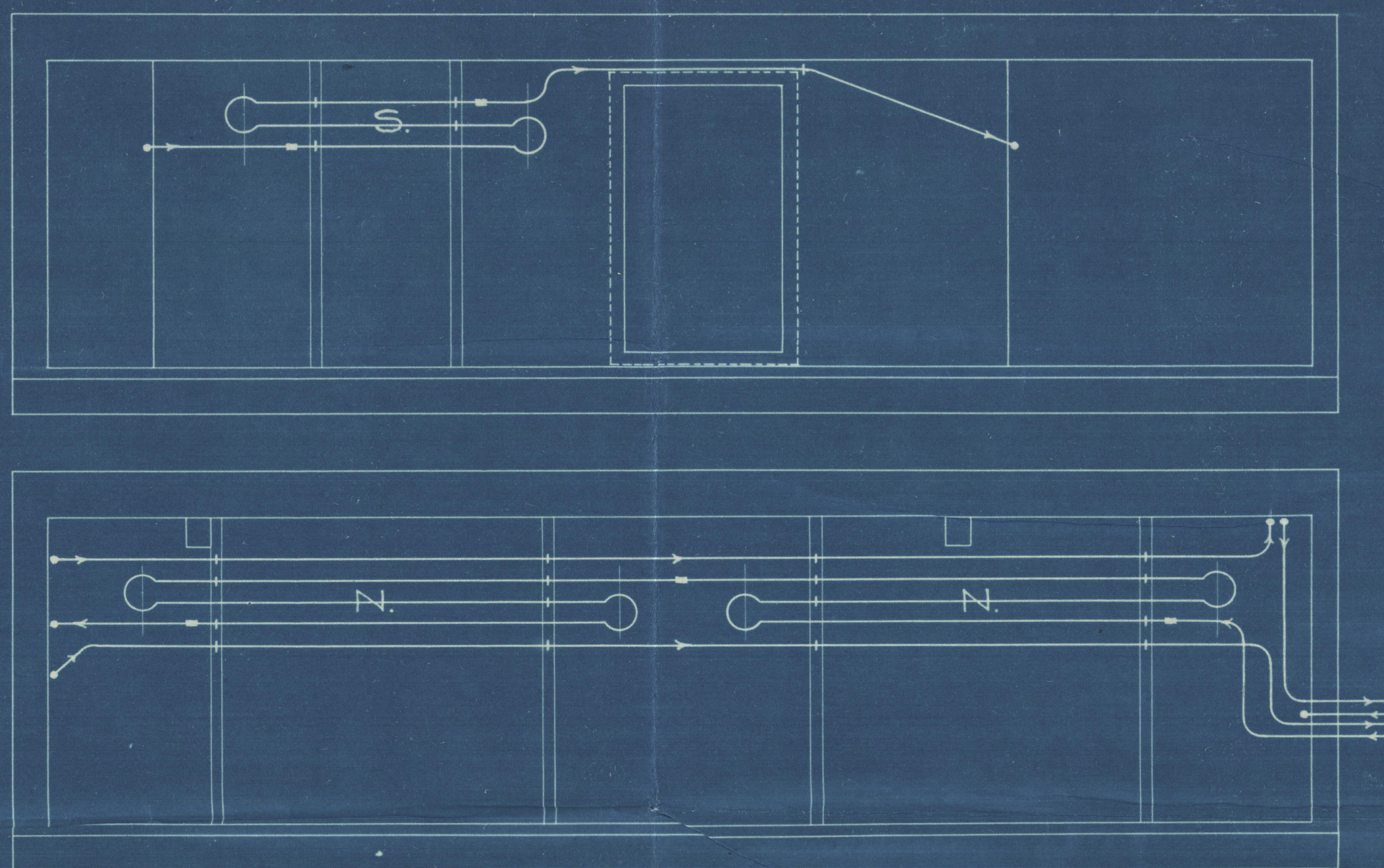
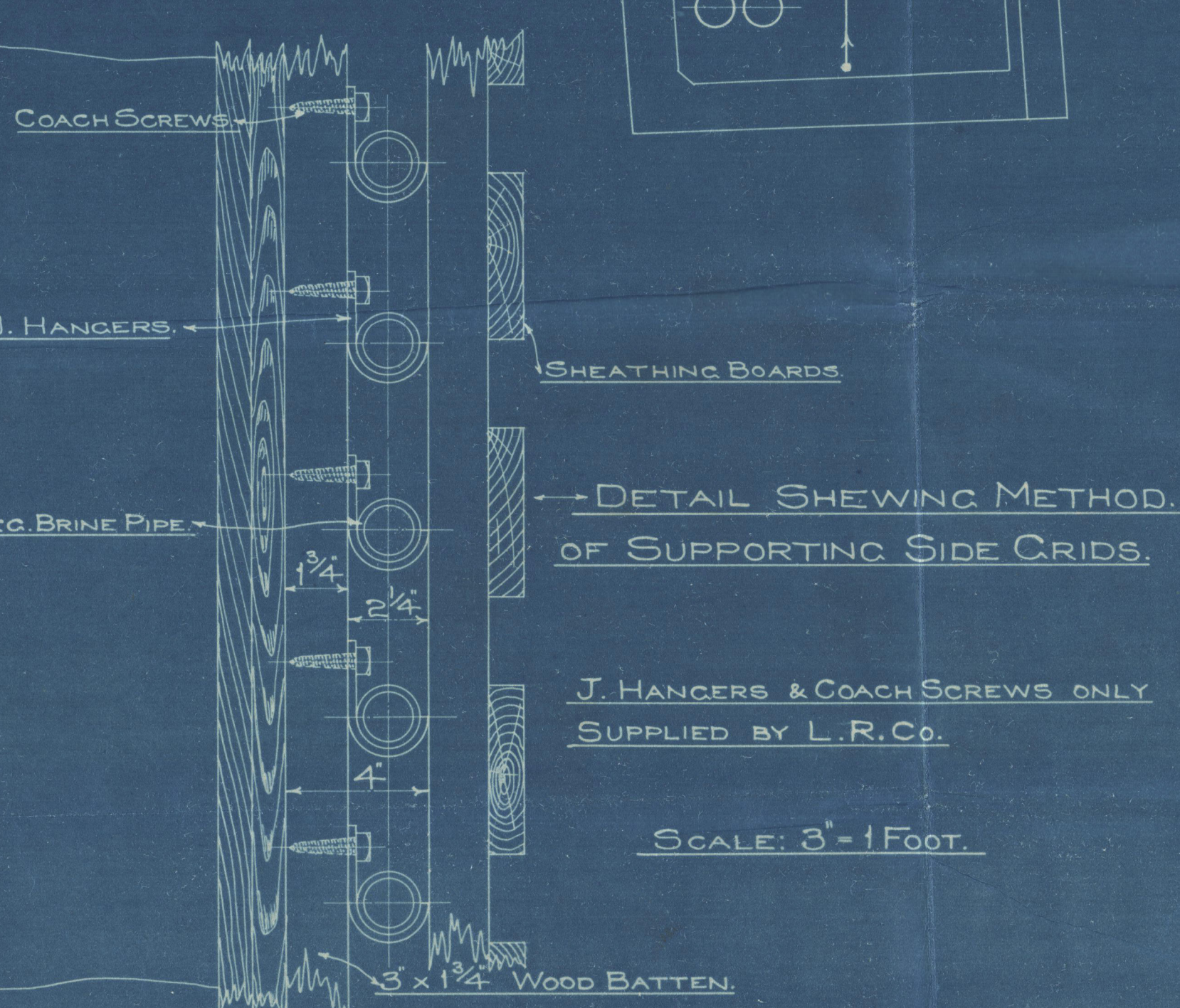
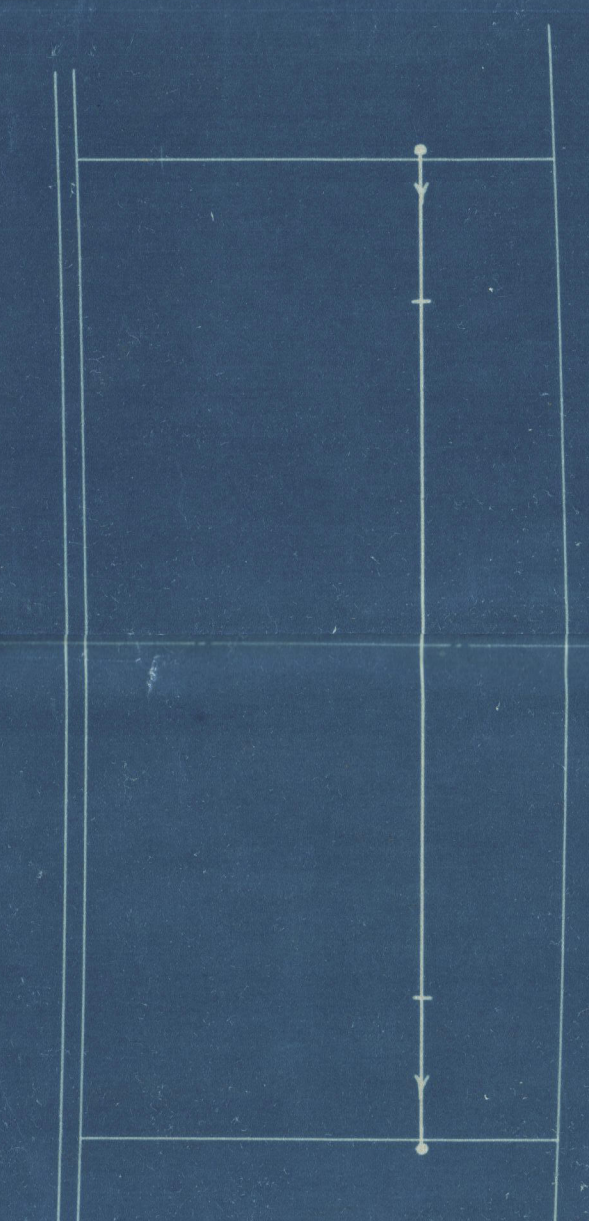
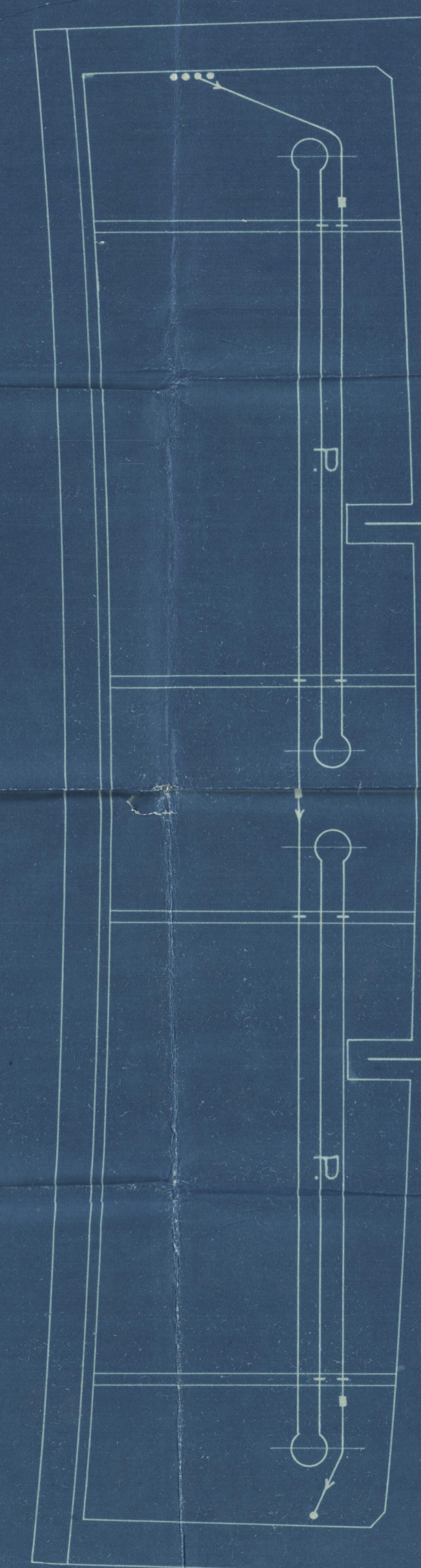
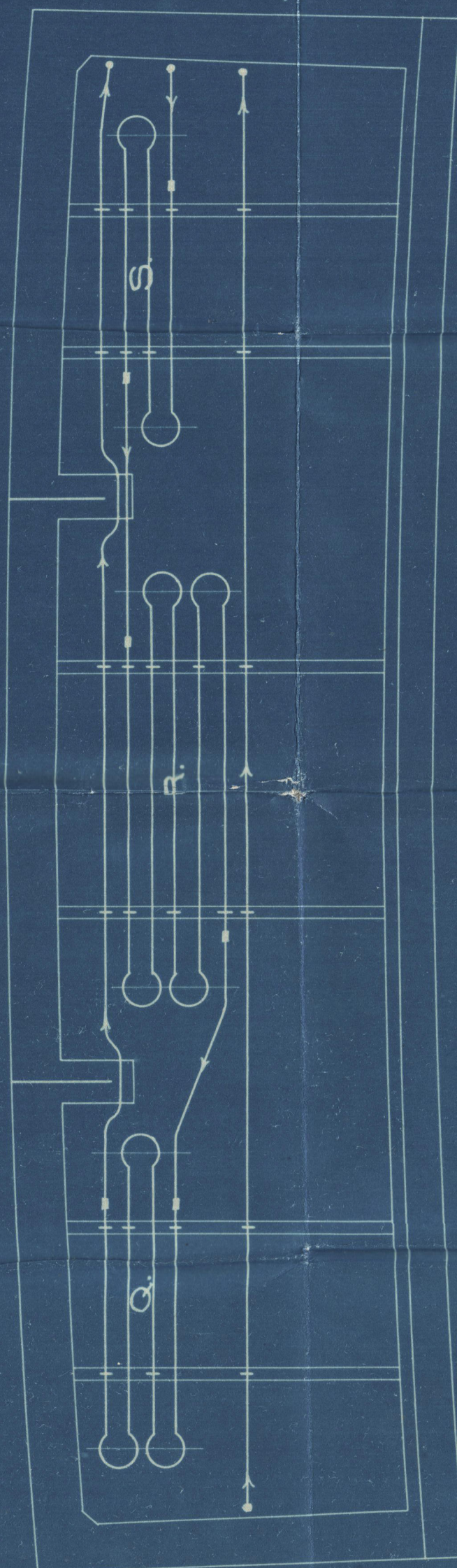
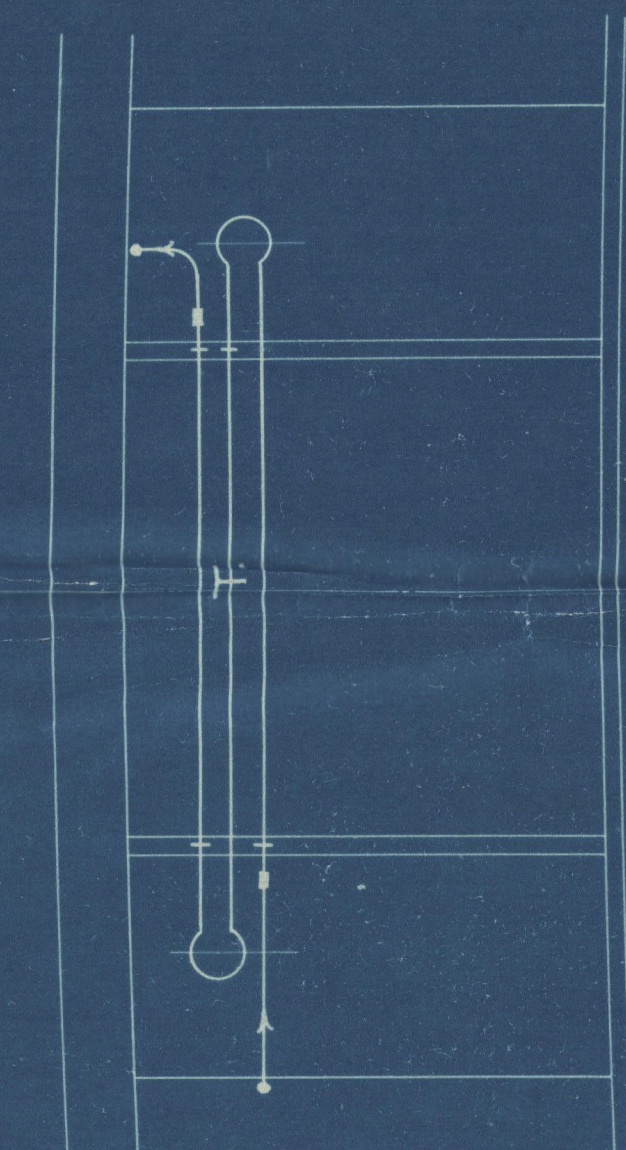


DETAIL SHEWING METHOD OF SUPPORTING ROOF GRIDS.
SCALE: 3" = 1 FOOT.



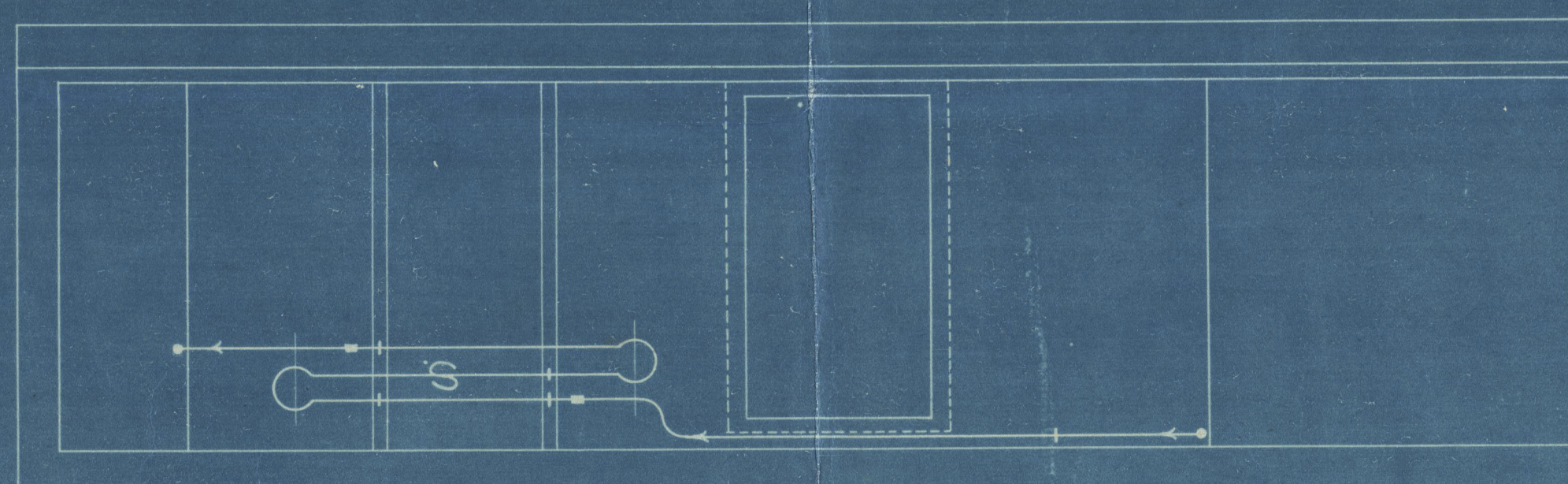
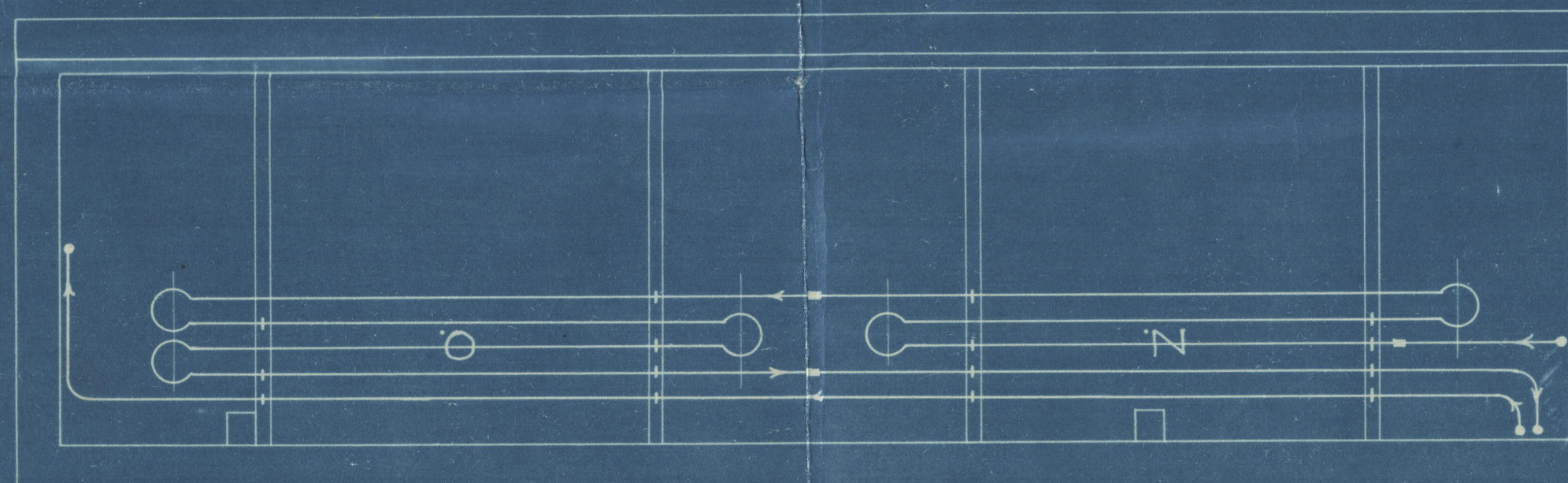
THE TUPERSPOOL REFRIGERATING CO. LTD.
1 JUL 1913
DRAWING OFFICE



DETAIL SHEWING METHOD OF SUPPORTING SIDE GRIDS.

J. HANGERS & COACH SCREWS ONLY
SUPPLIED BY L.R.CO.

SCALE: 3" = 1 FOOT.



A.R.R.
5-9-13

BRINE PIPING TO SCHEDULE, 19805, PAGES 1, 2, 3 & 4.

ARRANGEMENT OF BRINE PIPING.

No. 4. TWEEN DECK.

ORDER No. 1199. S.S. "ARMIDA." JUNE 28TH. 1913.

SCALE: 3/8" = 1 FOOT.

DRAWING No. 6449.



No.
For Enclosure
To: *Mr. W. G. Smith Esq.*
From: LIVERPOOL REFRIGERATION CO., LTD.,
LIVERPOOL.
191

S.S. "Armida"
Refrigerating plant.
Arrangement
of
Brine piping
N°4 Tween decks



Engmed & Syndicate
Obt. No 11268



ANB32-0166