

MIDSHIP SECTION STEEL S. STEAMER No 264

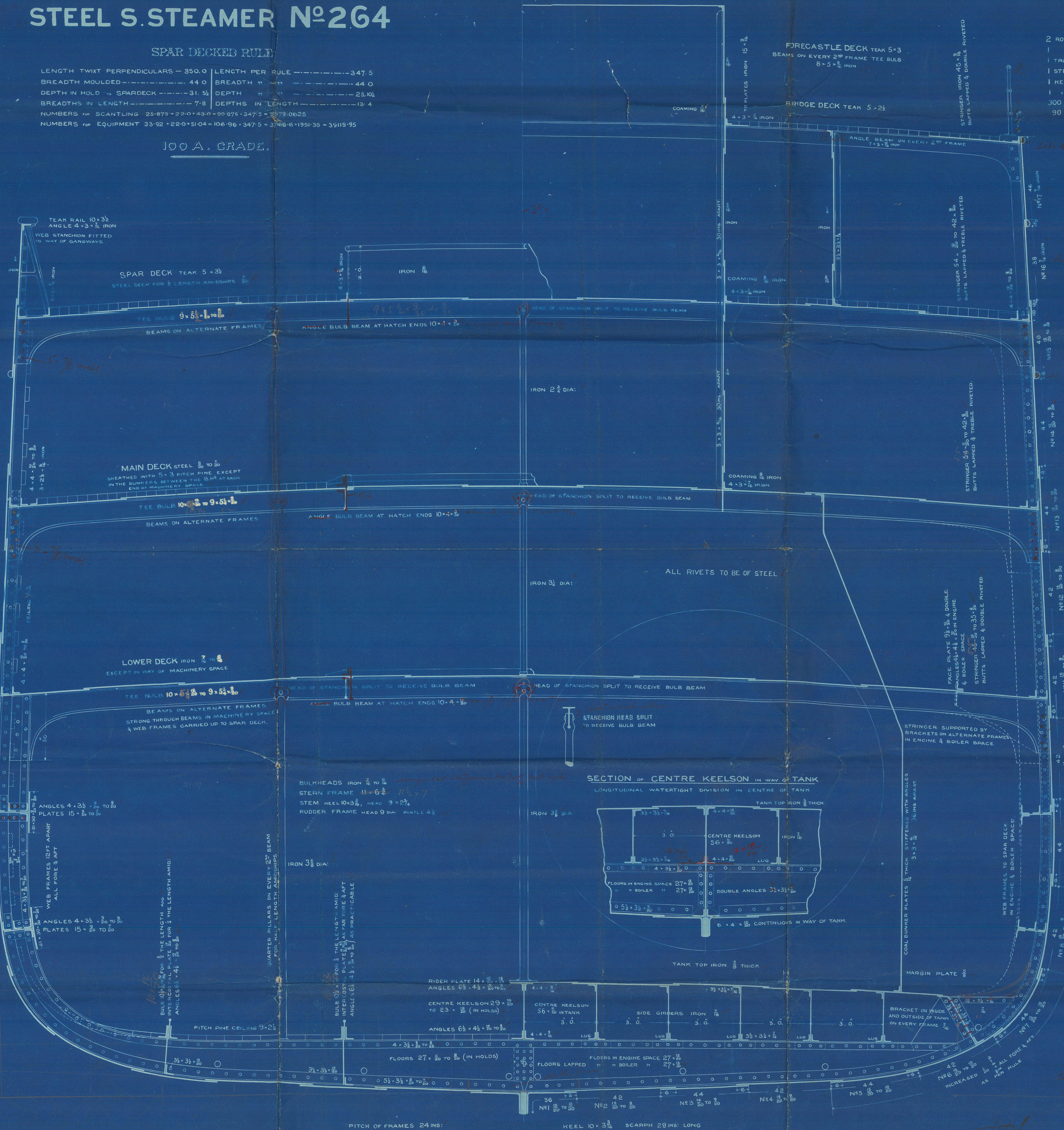
SPAR DECKED RULE

LENGTH TWIXT PERPENDICULARS - 350.0 LENGTH PER RULE - 347.5
BREADTH MOULDED - 44.0 BREADTH " " - 44.0
DEPTH IN HOLD - SPARDECK - 31.5 DEPTH " " - 25.10
BREADTHS IN LENGTH - 7.8 DEPTHS IN LENGTH - 13.4
NUMBERS FOR SCANTLING 25.875 + 22.0 + 43.0 - 00.875 - 347.5 - 379.0625
NUMBERS FOR EQUIPMENT 33.92 + 22.0 + 51.04 + 106.96 + 347.5 + 379.0625 - 39119.95

100 A. GRADE.

ANCHORS AND CHAINS

2 RODGERS SMALL PALMED ANCHOR	40 CWT. EX. STOCK
1 " " " "	38 " " "
1 TROTMAN'S ANCHOR	36 " " "
1 STREAM " "	12 " " "
1 REDGE " "	6 " " "
1 " " "	3 " " "
300 FATHOMS 2 1/2" STUD CHAIN CABLE	
90 " " 1 1/2" STREAM CHAIN	
TESTED TO LLOYD'S REQUIREMENTS	



HEIGHT OF REVERSED FRAMES ALTERNATELY
SHEER STRAKE 2 1/2" THICKER WHERE PORTS
COME WITHIN 2' OF THE LENGTH AMIDSHIPS
SHEER STRAKE INCREASED 2 1/2" FOR 1/2 THE
LENGTH AMIDSHIPS AND STRAKE NEXT
BELOW IT 2 1/2" FOR 1/2 THE LENGTH AMIDSHIPS

HEIGHT OF REVERSED FRAMES ALTERNATELY

BUTTSTRAPS OF N°15, TREBLE RIVETED ALL
FORE AFT WITH STRAPS 3/8" THICKER THAN THE
PLATES THEY CONNECT FOR 2/3 THE LENGTH
AMIDSHIPS & 1/2 AT ENDS. AN ANGLE 6 1/2" x 4 1/2"
FITTED ON STRAPS OF N°12 & 13 STRAKE FOR 1/2
THE LENGTH AMIDSHIPS

DOUBLE REVERSED FRAMES FROM MARGIN
PLATE TO MARGIN PLATE IN ENGINE & BOILER SPACE

SCALE 1/2 INCH TO ONE FOOT

HALL, RUSSELL & CO
ENGINEERS & SHIPBUILDERS
ABERDEEN

AB 127 1010

Midship Section
Messrs Hall Russell & Co

S.S. No. 264

S.S. "Thermopylae."

Abn Rep No 4297.



© 2021

Lloyd's Register
Foundation

ABN22-0010