

20.11.87

S. S. Aberdeen
Aberdeen report 3452

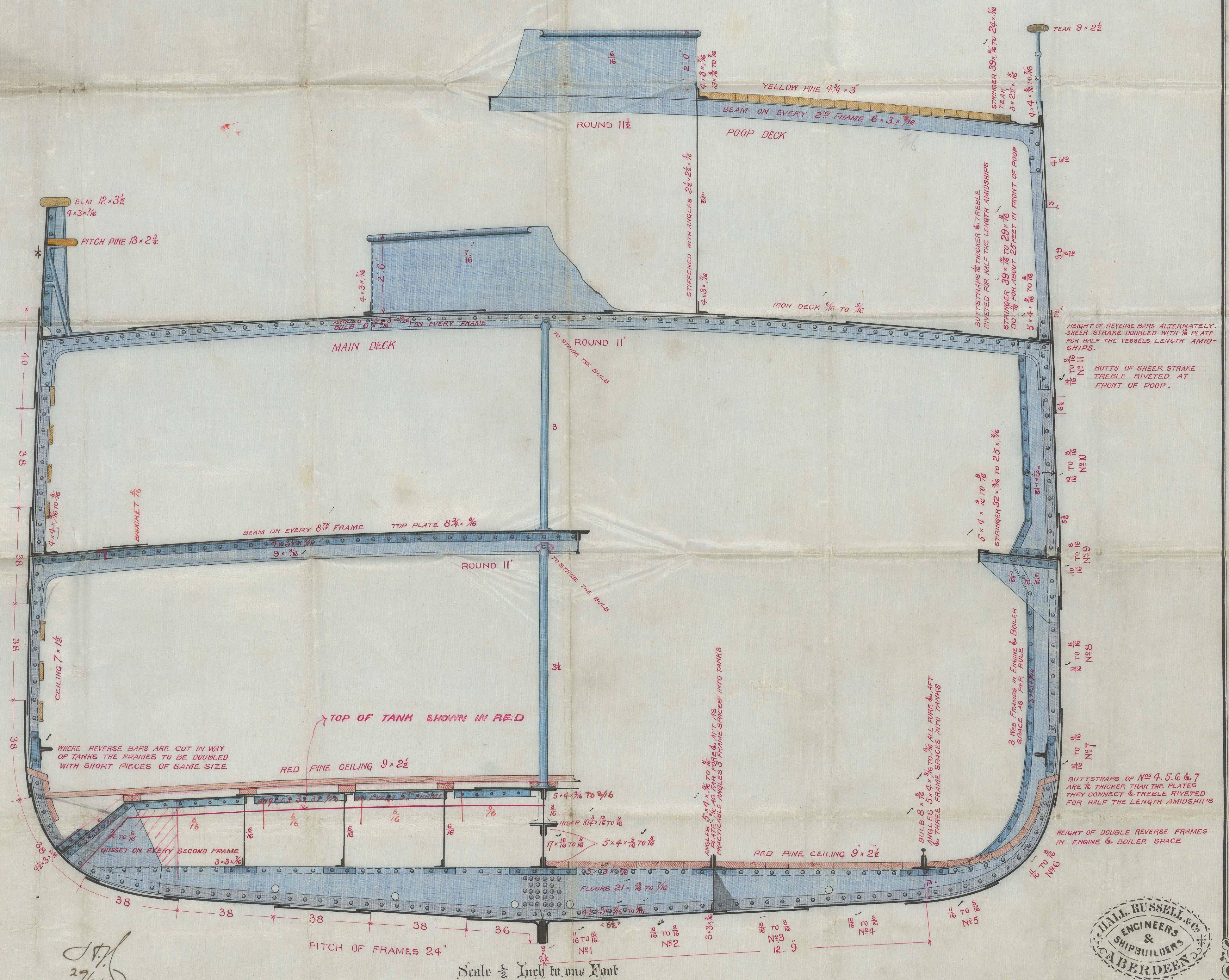
MIDSHIP SECTION

S. S. N^o 229

LENGTH TWIXT PERPENDICULARS	250' 0"	LENGTH PER RULE	248' 5"
BREADTH MOULDED	34' 0"	BREADTH DO:	34' 0"
DEPTH IN HOLD	17' 9"	DEPTH DO:	19' 71"
BREADTHS IN LENGTH	7' 3"	DEPTHS TO LENGTH	12' 6"

NUMBERS FOR SCANTLING $17 \cdot 0 + 19 \cdot 71 + 33 \cdot 25 = 69 \cdot 96 \times 248 \cdot 5 = 17385 + 1738 \cdot 5 = 19123 = \text{EQUIPMENT}$

GRADE 100 S.



J. H. RUSSELL & CO.
ENGINEERS
&
SHIPBUILDERS
ABERDEEN