

SHIP Nos. 1309-10.

RUDDER.
FORGED STEEL.
TO LLOYDS TESTS.
SCALE - 1IN = 1FT.

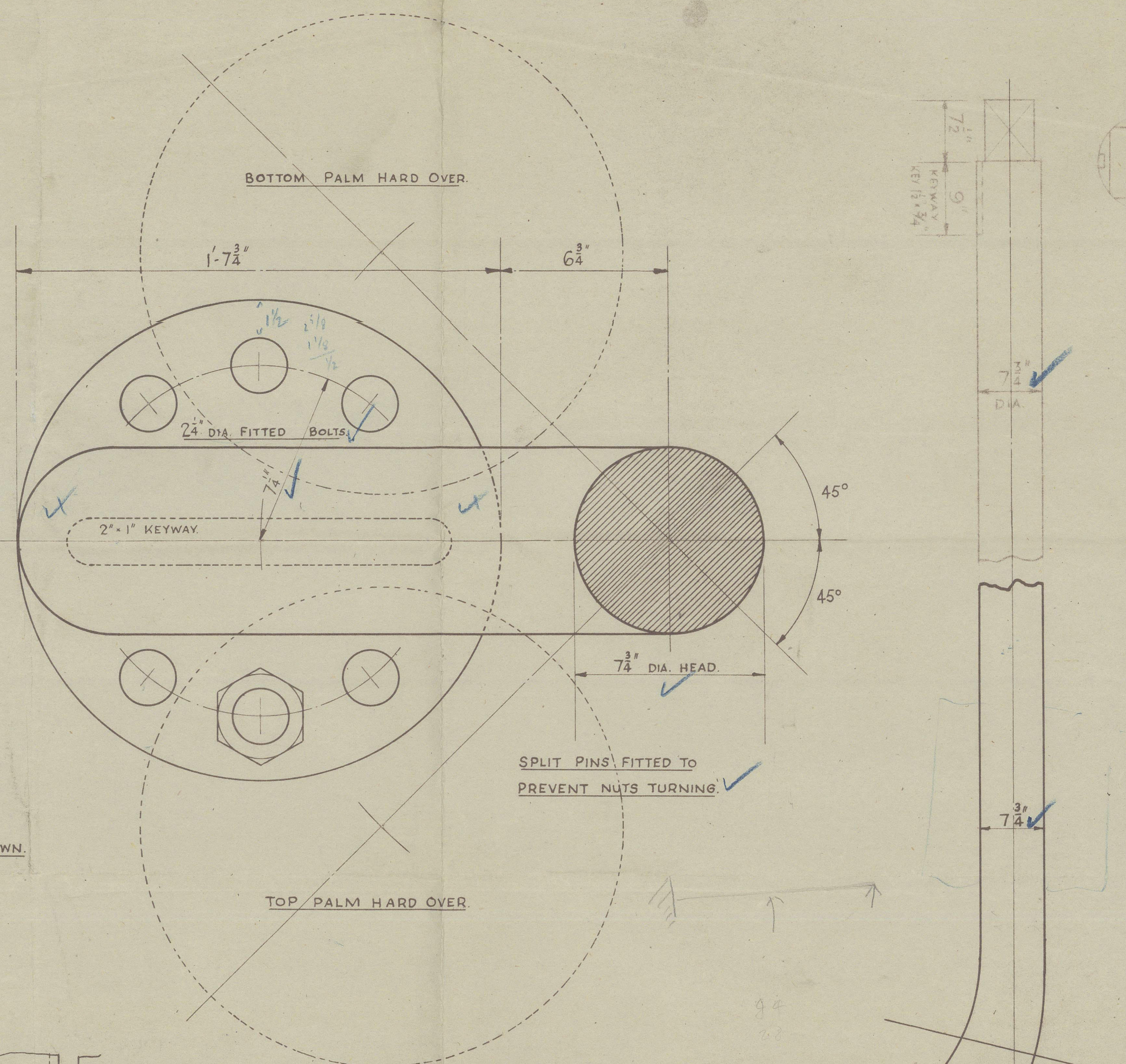


ref. Cockburn 1203/4/5
(7 1/2" (hard))

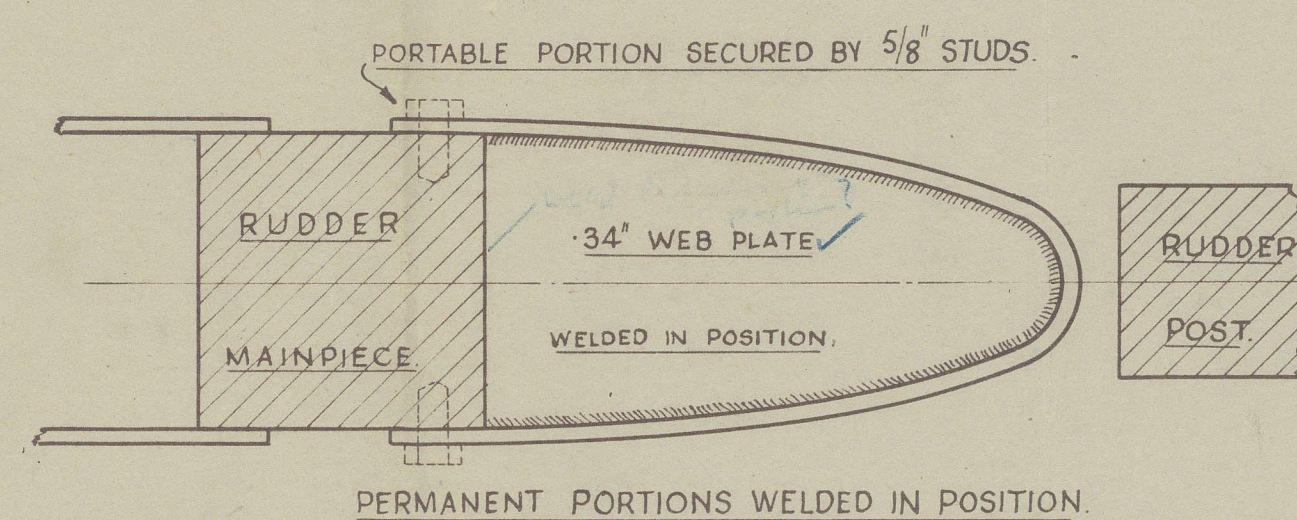
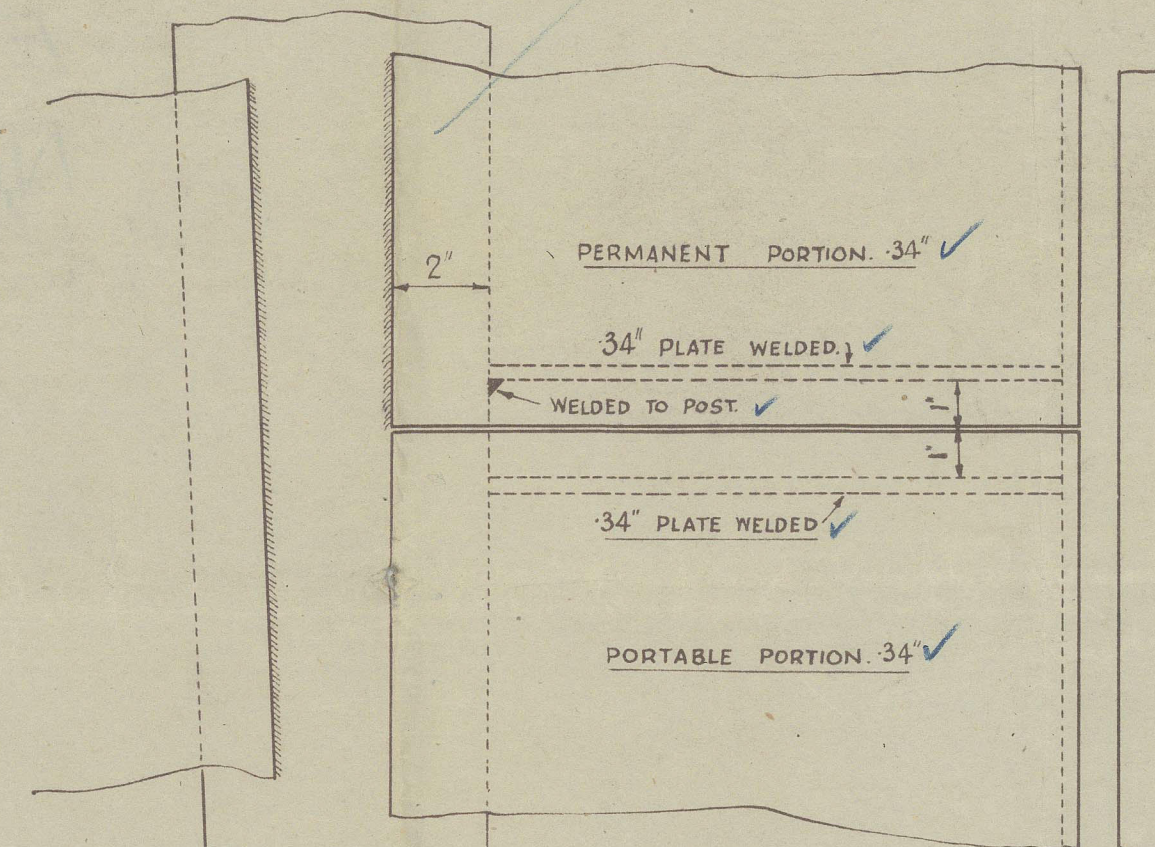
✓ Care to be taken that the
lines of coupling are fitted
closely in use of ends after
bottom bolts

COUPLING BOLTS TO BE SHIPPED
FROM TOP WITH NUTS SCREWED UP
ON UNDERSIDE

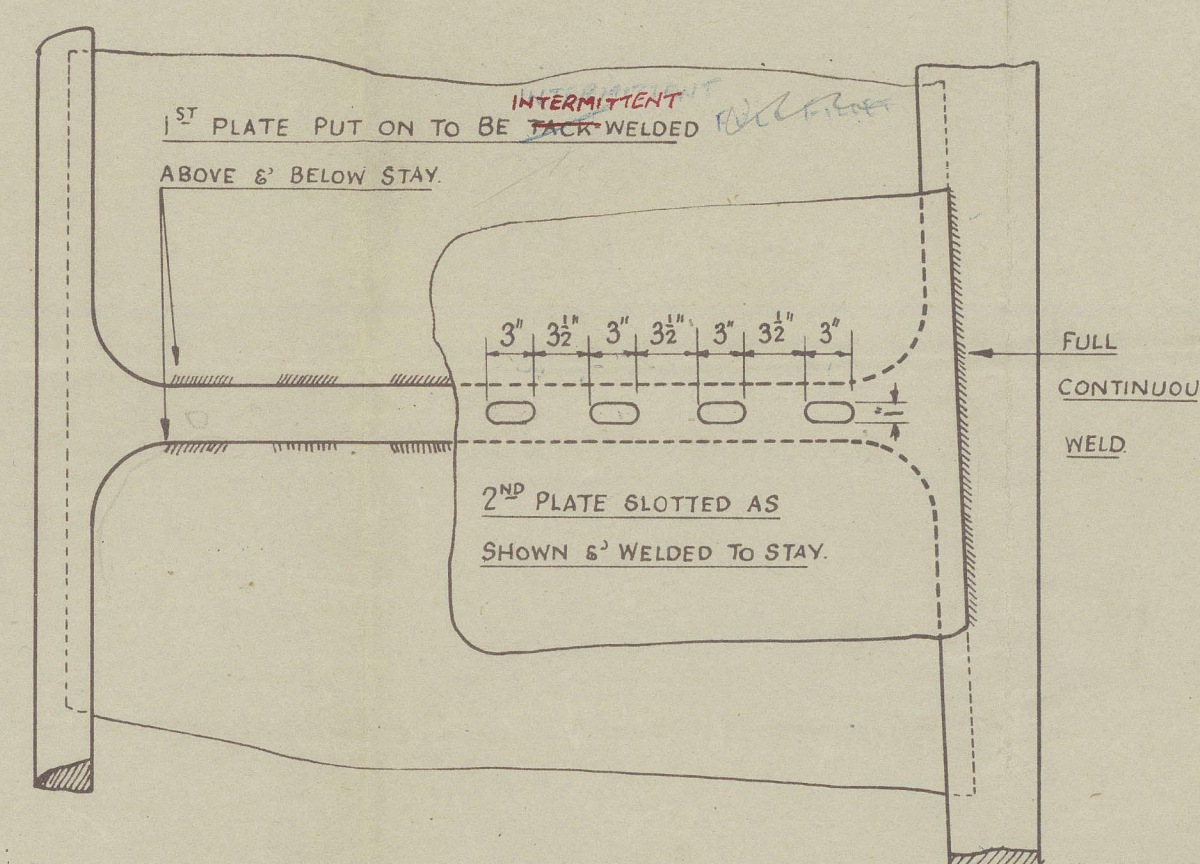
HARD OVER ANGLE 45°
PALMS TO CLEAR EACH OTHER AS SHOWN.



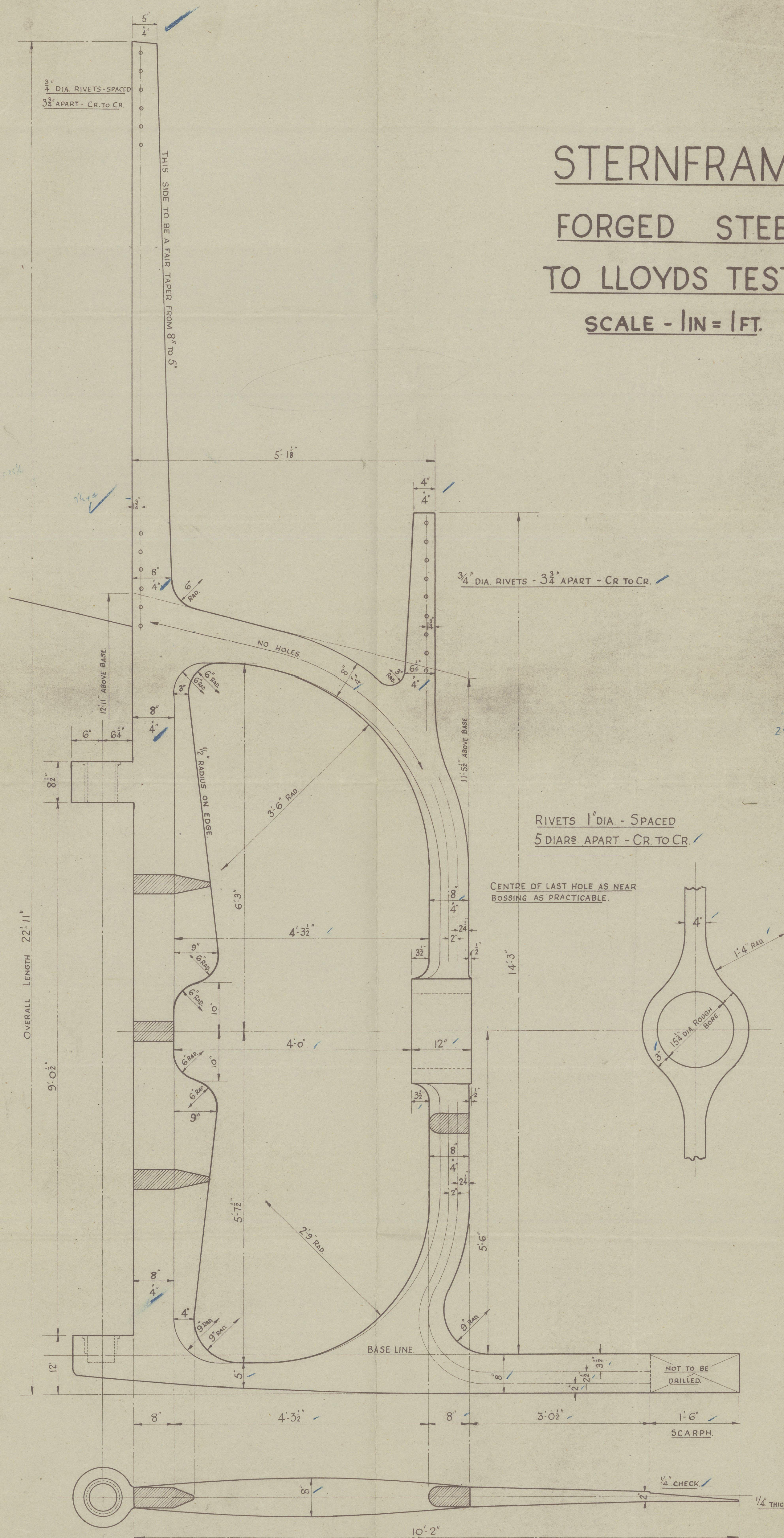
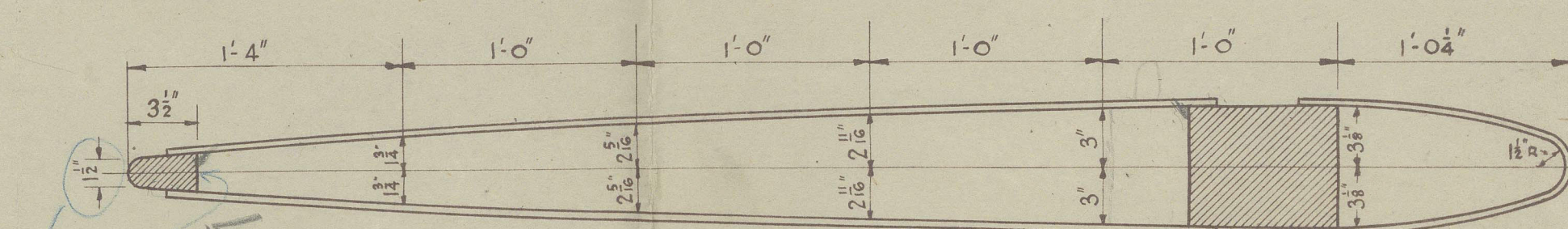
	a	b	ab
1/2 x 3/4 x 1.0	1.75	4.54	7.95
10 x 25 x 5.33	56.7	2.23	125.25
	58.42		191.1
5/4 x 8 3/4 x 6 1/2	51.91	9.08	471.5
			184.95



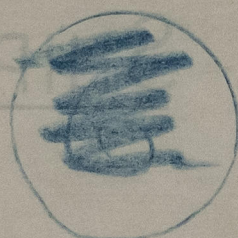
DETAIL OF STREAMLINING AT
FORE EDGE OF RUDDER.



DETAIL SHOWING CONNECTION OF
RUDDER PLATING TO STAYS



Nos 1309-10



RUDDER

FORGED STEEL

TO LLOYD'S TESTS

SCALE - IN FEET

14

COCHRANE & SONS,
YARD NOS. 1309-10,

STERNFRAME & RUDDER

EX "ST. BARTHOLOMEW" ❀

s/v
cable
trifalga
NN, Stella Arcturus. X.



© 2021

Lloyd's Register
Foundation

015505 - 015512 - 0001