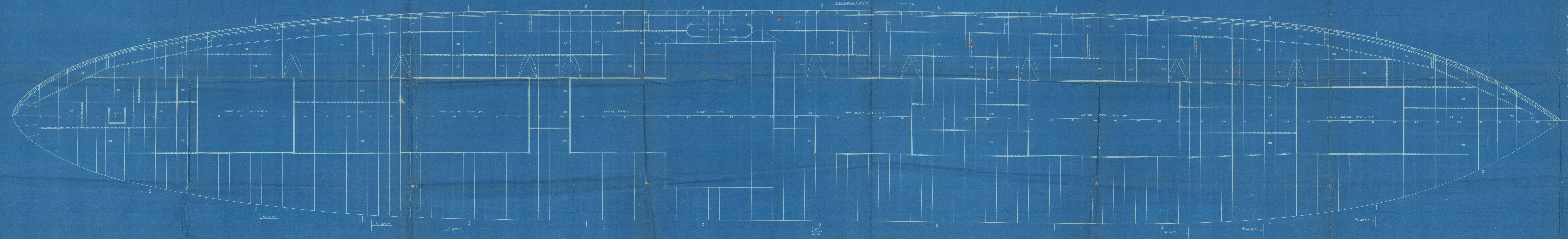


S. S. N<sup>os</sup> 314-15.

UPPER DECK.

SCALE 1/4"=1 FOOT.



— RIVETING —  
RIVETS THRO STRINGER & DECK PLATING TO BEAMS SPACED 6" C<sup>o</sup> TO C<sup>o</sup>  
IN WAY OF THICK PLATING AT  
SIDES OF BOILER CASING 7/8" DIA SPACED 7" C<sup>o</sup> TO C<sup>o</sup> 8" APART IN BODY OF OVERLAP  
RIVETS THRO STRINGER & DECK PLATING TO BULKHEAD BEAMS 7/8" DIA SPACED 4" C<sup>o</sup> TO C<sup>o</sup>  
DECK PLATING BUTTS WHERE DOUBLE RIVETS 3/4" DIA SPACED 2 1/2" C<sup>o</sup> TO C<sup>o</sup>  
SINGLE 2 1/2"  
EDGES OF OVERLAPS AT HATCH CORNERS 3/4" DIA SPACED 3 1/2" APART IN BODY OF  
OVERLAP 1 1/2" C<sup>o</sup> TO C<sup>o</sup>  
RIVETS THRO STRINGER BUTTS WHERE DOUBLE RIVETS 3/4" DIA SPACED 3 1/2" C<sup>o</sup> TO C<sup>o</sup>  
BEAMS OF DECK PLATING 3/4" DIA SPACED 3 1/2" C<sup>o</sup> TO C<sup>o</sup> (UNLESS OTHERWISE MARKED)  
SHELL LUGS & SHELL PLATING 7/8" DIA SPACED 5 1/2" C<sup>o</sup> TO C<sup>o</sup>  
ATTENDS 1/2" DIA 4 1/2"  
DECK STRINGER 7/8" DIA 4 1/2" (UNLESS OTHERWISE MARKED)  
STRINGER ANGLES & DECK 3/4" DIA SPACES 4 1/2"  
GROUND BARS OF CASING 3/4" 5 1/2"  
RIVETS IN FOUNDATION BARS OF HATCHES TO BE 7/8" DIA SPACED 4" C<sup>o</sup> TO C<sup>o</sup>  
3" x 3" BAR ABRAST BOILER CASING 7/8" DIA REEL SPACED  
3 1/2" C<sup>o</sup> TO C<sup>o</sup> DIAGONALLY



32.  
Dunlop Bremner & Co

<sup>50</sup>  
N 314 + 15

Upper Deck

$\frac{1}{2}$

5

SS

DESTRO

SS

DIDO

Now S.S. DESTRIAN



© 2021

Lloyd's Register  
Foundation

015450-015460-0286