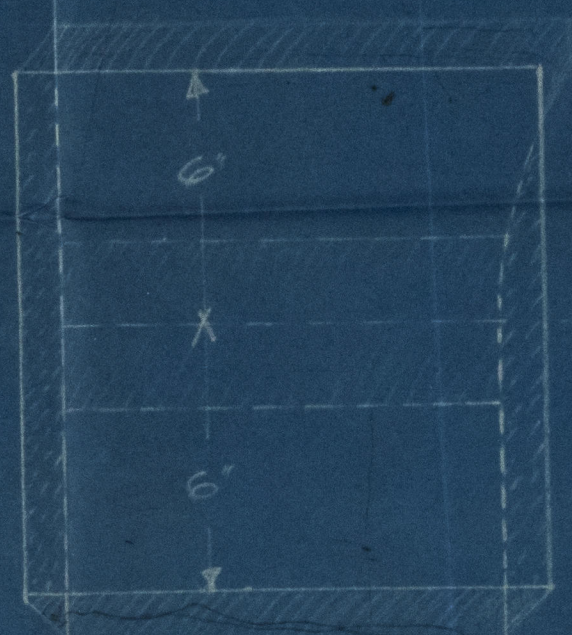
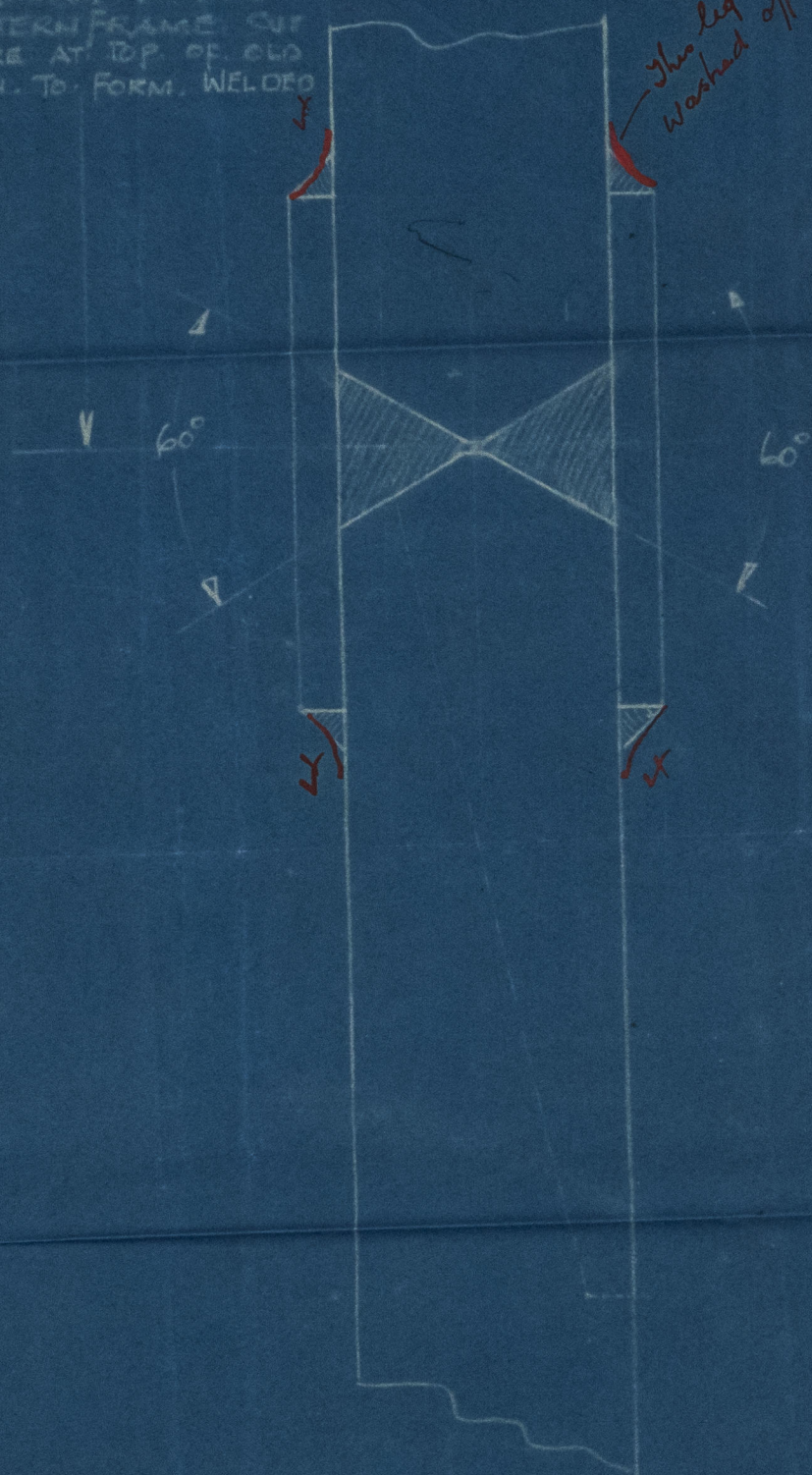


REMAINING PORTION
OF STERN FRAME CUT
SQUARE AT TOP OF OLD
SCARPH TO FORM WELDED

3/4" leg
washed off into port



LENGTH OF
OF ORIGINAL
SCARPH 20"

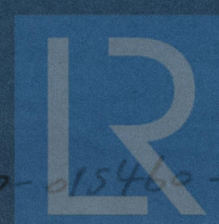
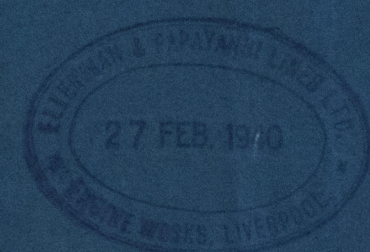
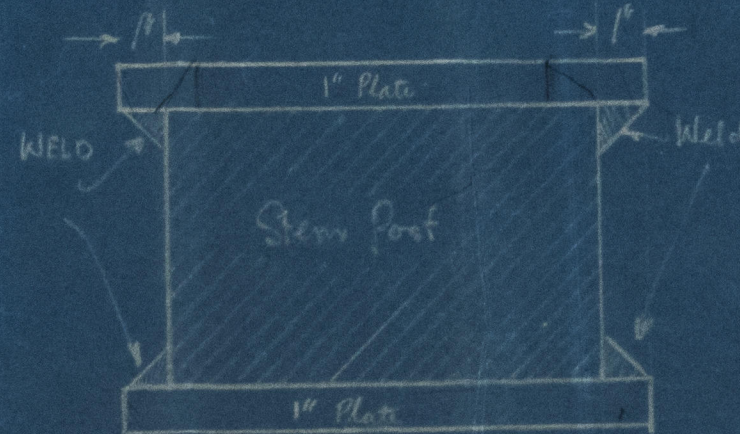
S.S. 'DIDO'
PROPOSED WELDED
SCARPH ON STERN POST

SCALE 3" = One foot

RE-CONSIDERED AND APPROVED AND
LIVERPOOL SURVEYORS NOTIFIED ACCORDINGLY.

18.3.10

W.M.



JS Dido

Approved

to

show frame

re part

© 2021

Lloyd's Register

Foundation

0281 2/2

²⁴
Scaph/ on Sternpost

s/s DIDO.

Pin + Sweep.

20 MAR 1940

015450-015460-0281

015450-015460-0281



© 2021
Lloyd's Register
Foundation