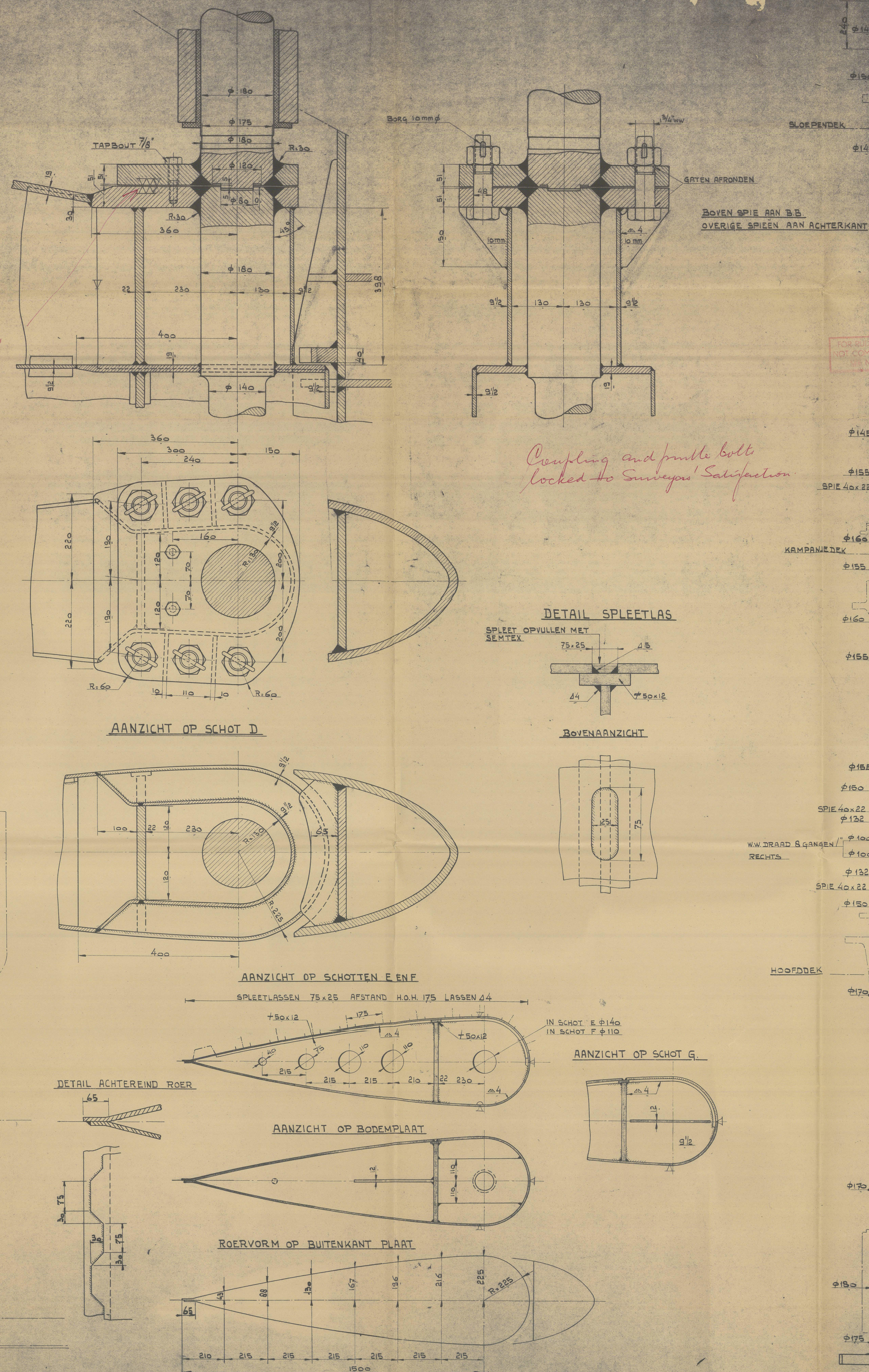


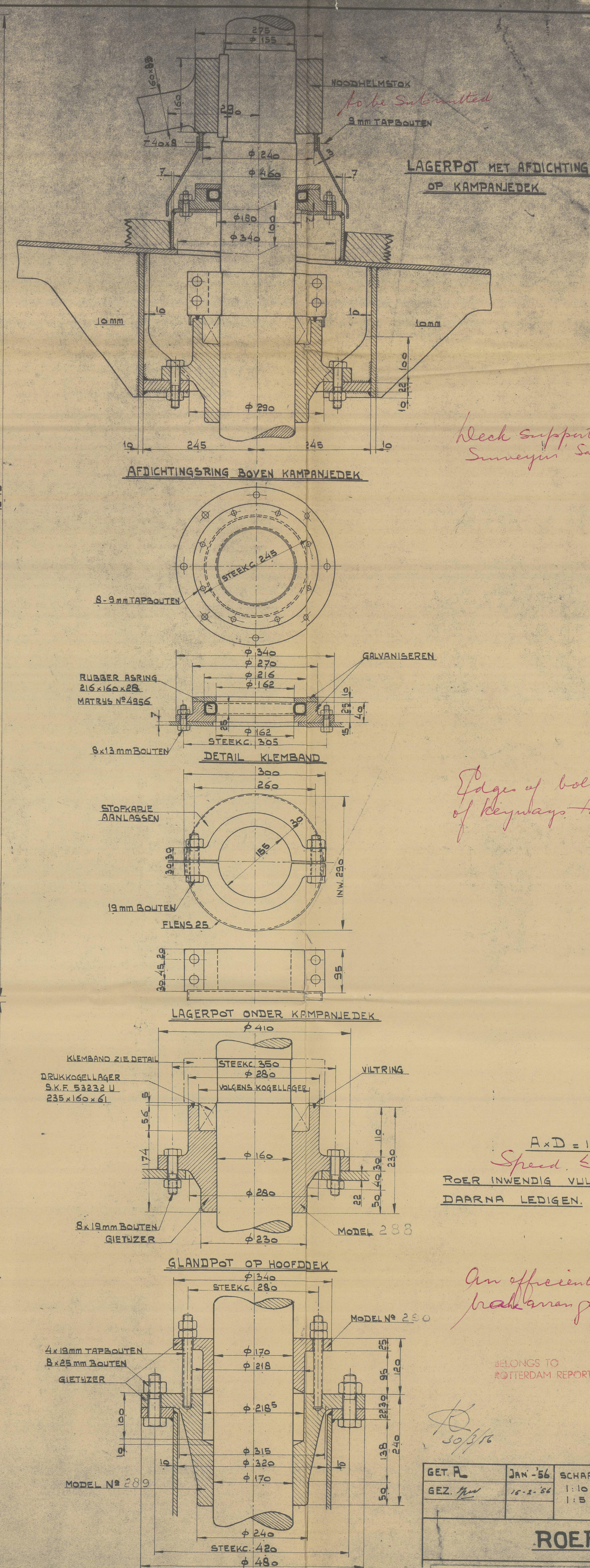
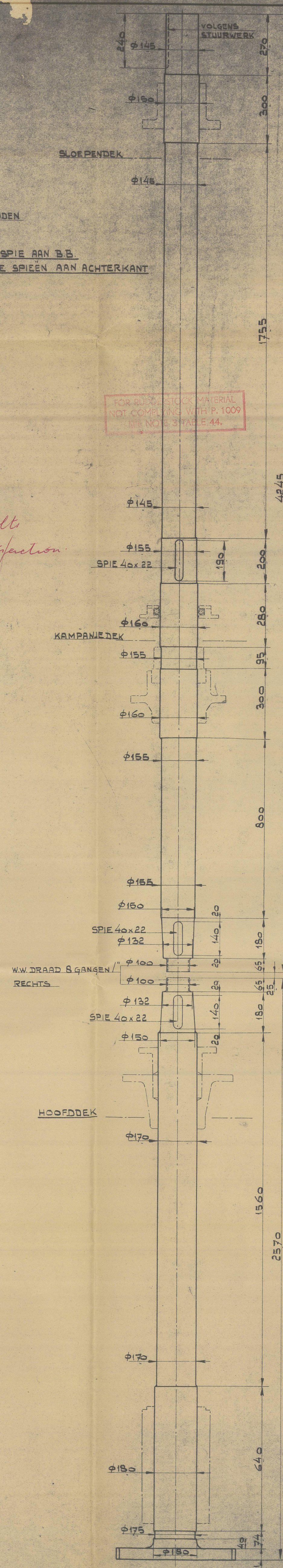
Final machining and
alignment to Surveys
Satisfaction



Coupling and pinette bolts
locked to Surveyors' Satisfaction

BOVEN SPIE AAN B.B.
OVERIGE SPIEEN AAN ACHTERKANT

FOR RUDDERSTOCK MATERIAL
NOT COMPLYING WITH P. 1009
SEE NOTE 3 TABLE 44.



Week supports to
Surveyor Satisfaction

Edges of bolt-holes & corners
of Rignways to Surveyor's
Satin finish

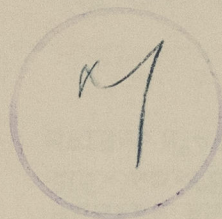
$A \times D = 107$
Speed. ≤ 10 knots
ROER INWENDIG VULLEN MET OLIE EN
DAARNA LEDIGEN.

An efficient locking or
brake arrangement to be fitted

BELONGS TO
ROTTERDAM REPORT No. 43253A

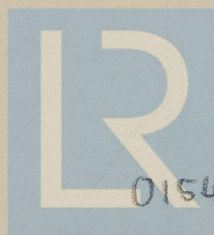
GET. R.	JAN -56	SCHAAL	BOUW № 317
GEZ. <i>me</i>	10-5-56	1:10 1:15	KUSTMOTORVRACHTBOOT
<u>ROER</u>			
N.V. SCHEEPSBOUW WERF IN DE GROOT IN VAN VLIET SLIKKEVEER (BIJ ROTTERDAM)			317008

RECORDS DEPT.,
LONDON.



"BERN" ★

Rudder -



© 2021

Lloyd's Register
Foundation

015433-015441-0041