

" Mateba

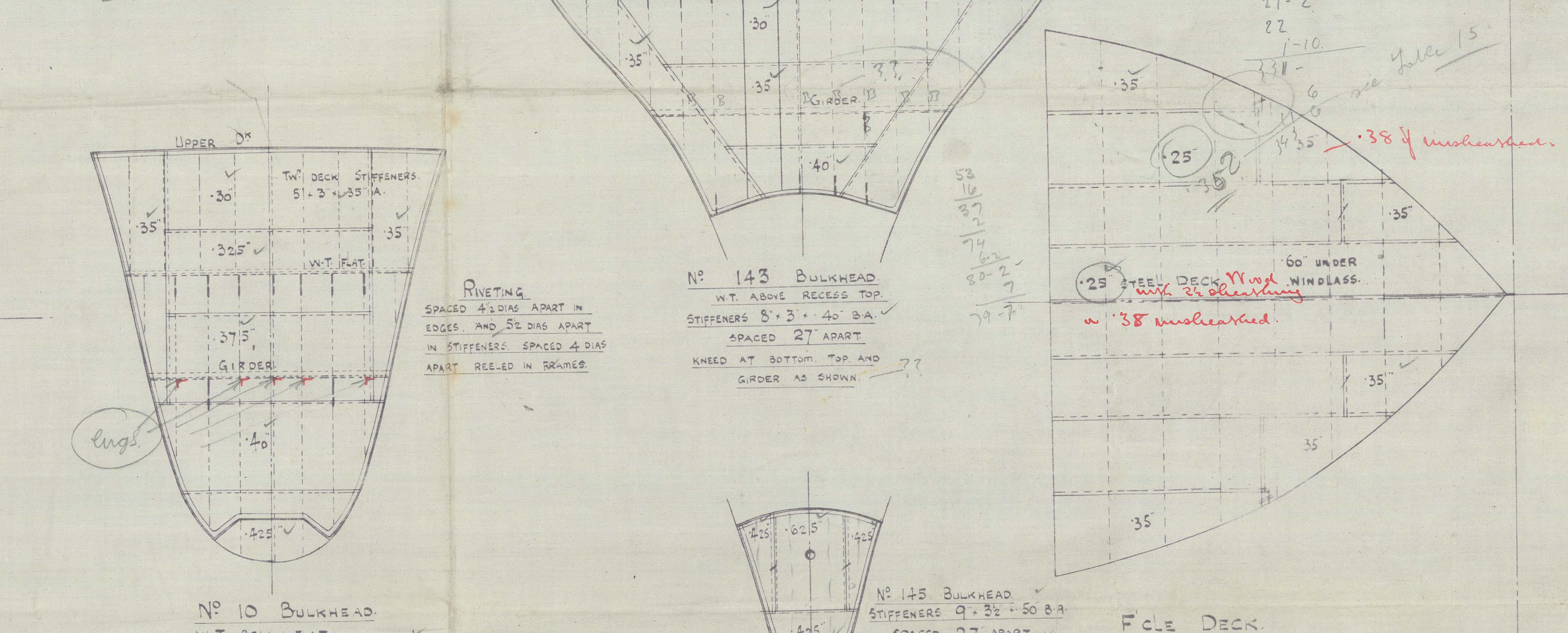
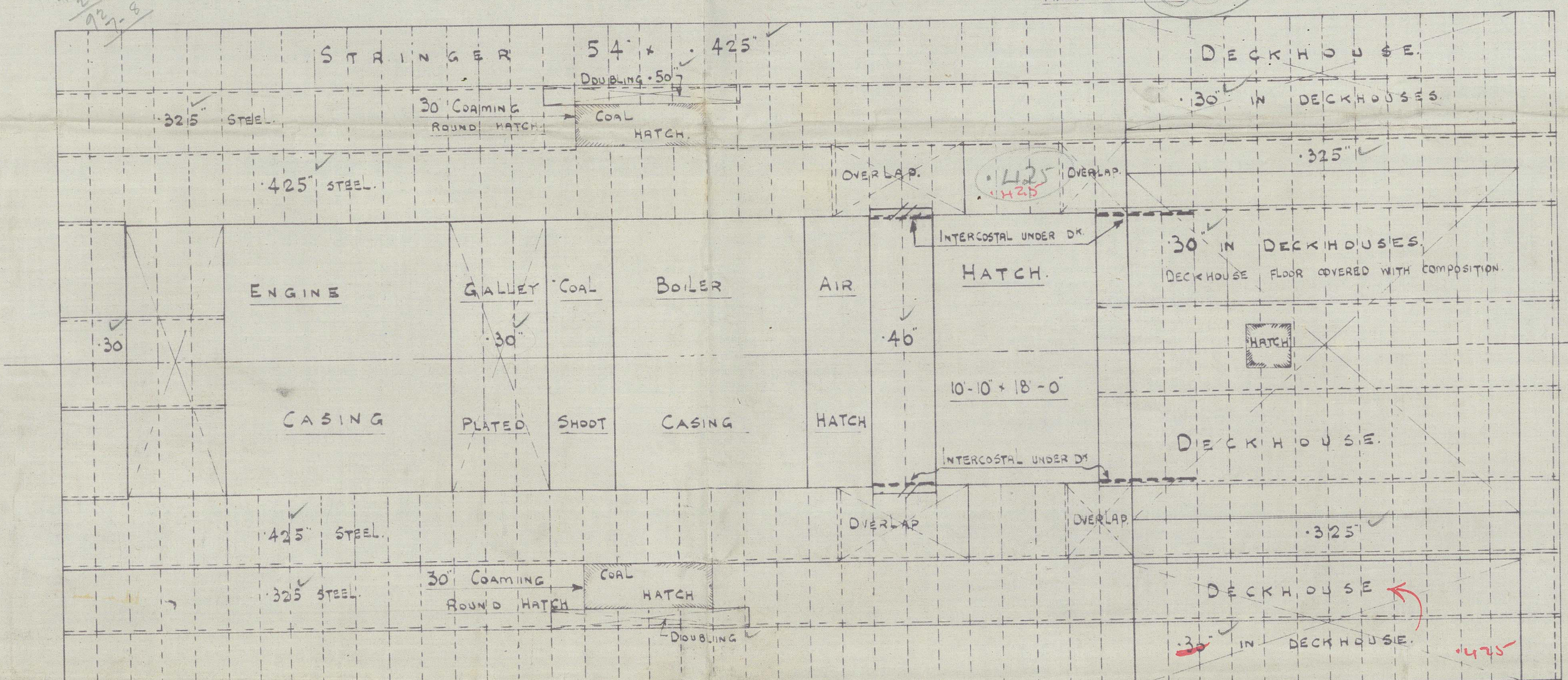
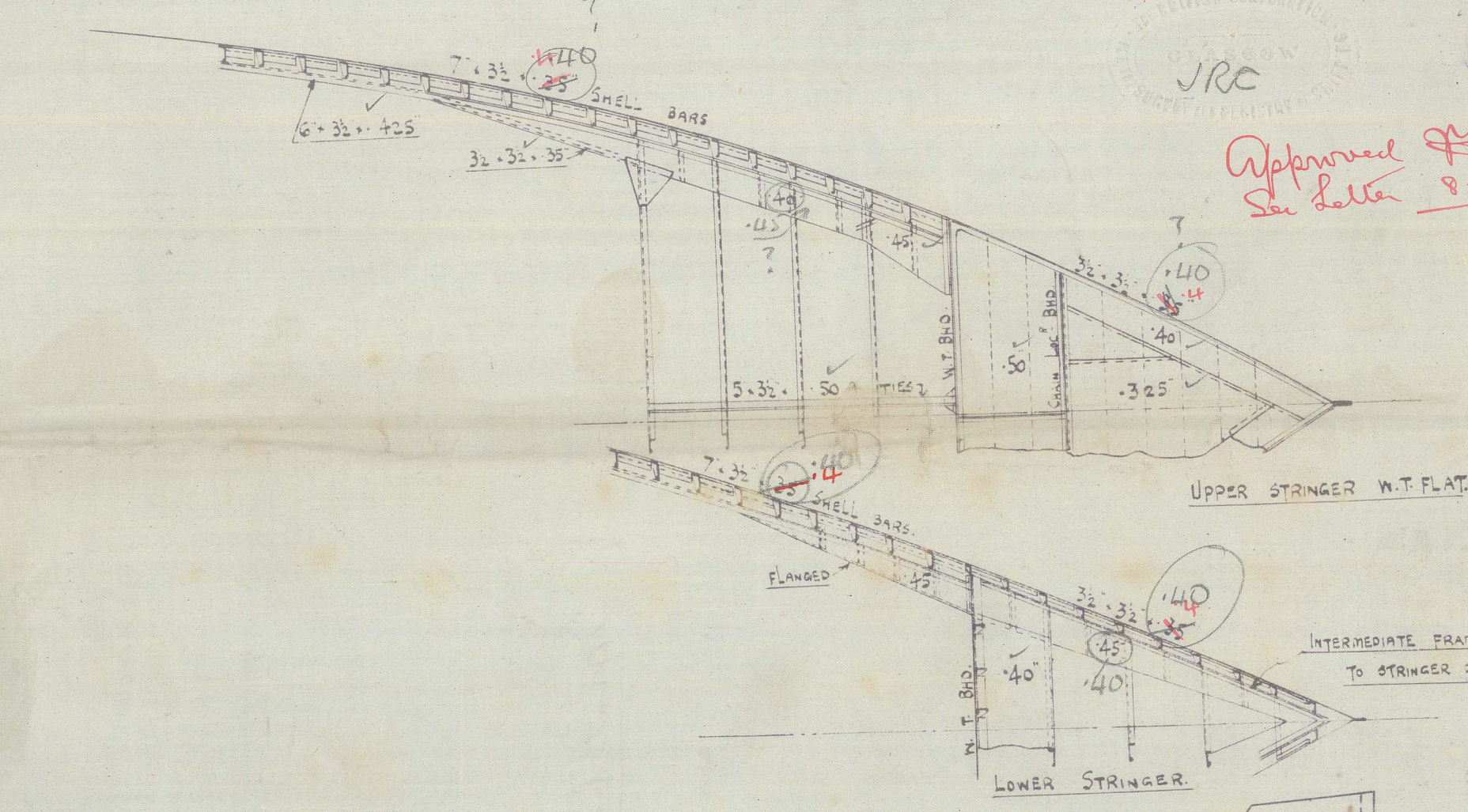
approved on proposal
all data 14/6/18

7'-0"

7'-0"

1'-0"

ABFT FRAME 11'0" INTERCOSTAL KEELSON IS
BROUGHT IN TO 7'-0" FROM CENTRE LINE FRAMES
REVERSE BOTTOMS ON BUILT FLOORS AS SHOWN.



SECTION IN WAY OF ENGINE & BOILER CASINGS
SHOWING PROPOSED SCANTLINGS.

WILLIAM DOBSON & Co.
SHIPBUILDERS
31/5/18
NEWCASTLE on TYNE

Wm. Dobson & Co.

Profile & deck.

212 -

to go in Bag

"Mateba"

now

MAURICE DELMAS



© 2021

Lloyd's Register
Foundation

015355-015365-0145