

PARTS CONNECTED		RIVETING LIST		SPACING		MATERIAL		HEAD		POINT		STYLE	
STINGER PLATING TO BEAMS	✓	32"	5/8"	4"	3/8"	IRON	PAN	C.S.K.				SINGLE CHAIN	
DECK PLATING TO BEAMS	✓	25"	5/8"	4"	3/8"								
PLATING LANDING 2 1/2" S.R.	✓	32"	5/8"	4"	3/8"								
STRINGER BUTT STRAP T.R. & D.R.	✓	32"	5/8"	4"	3/8"								
DECK PLATING BUTT STRAP D.R. & S.R.	✓	25"	5/8"	4"	3/8"								
STRINGER ANGLE TO DECK	✓	32"	5/8"	4"	3/8"								
--- TO SHELL	✓	42"	5/8"	4"	3/8"								
GUTTERWAY ANGLE TO DECK	✓	32"	5/8"	4"	3/8"								
CASING ANGLE TO DECK	✓	25"	5/8"	4"	3/8"								

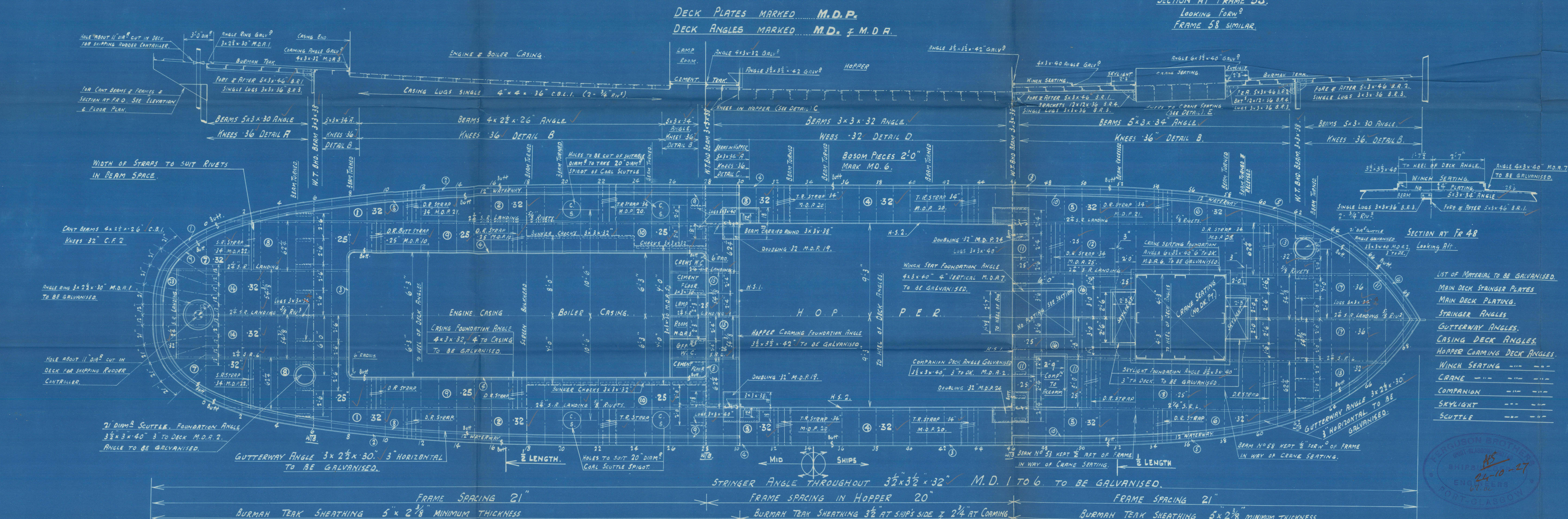
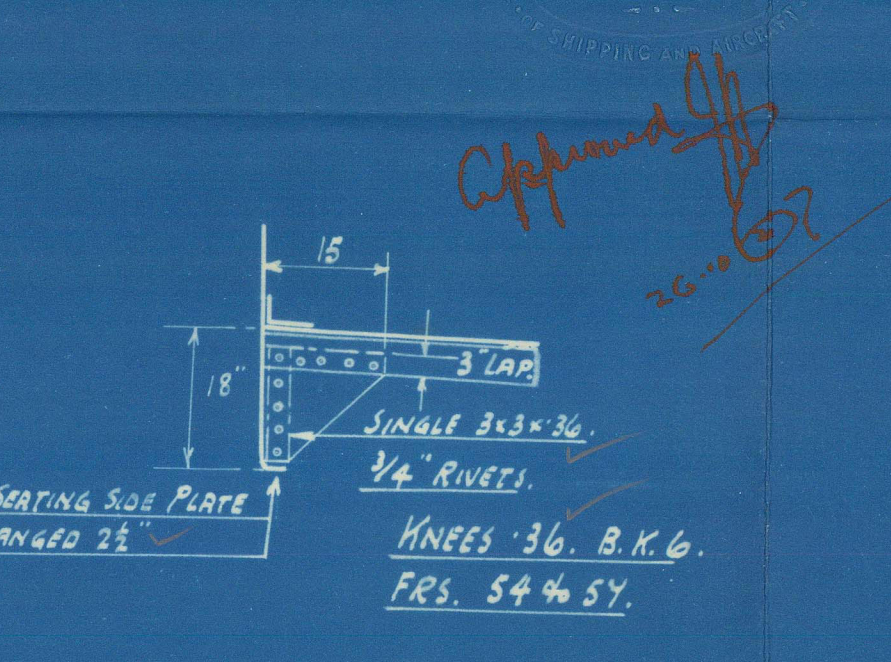
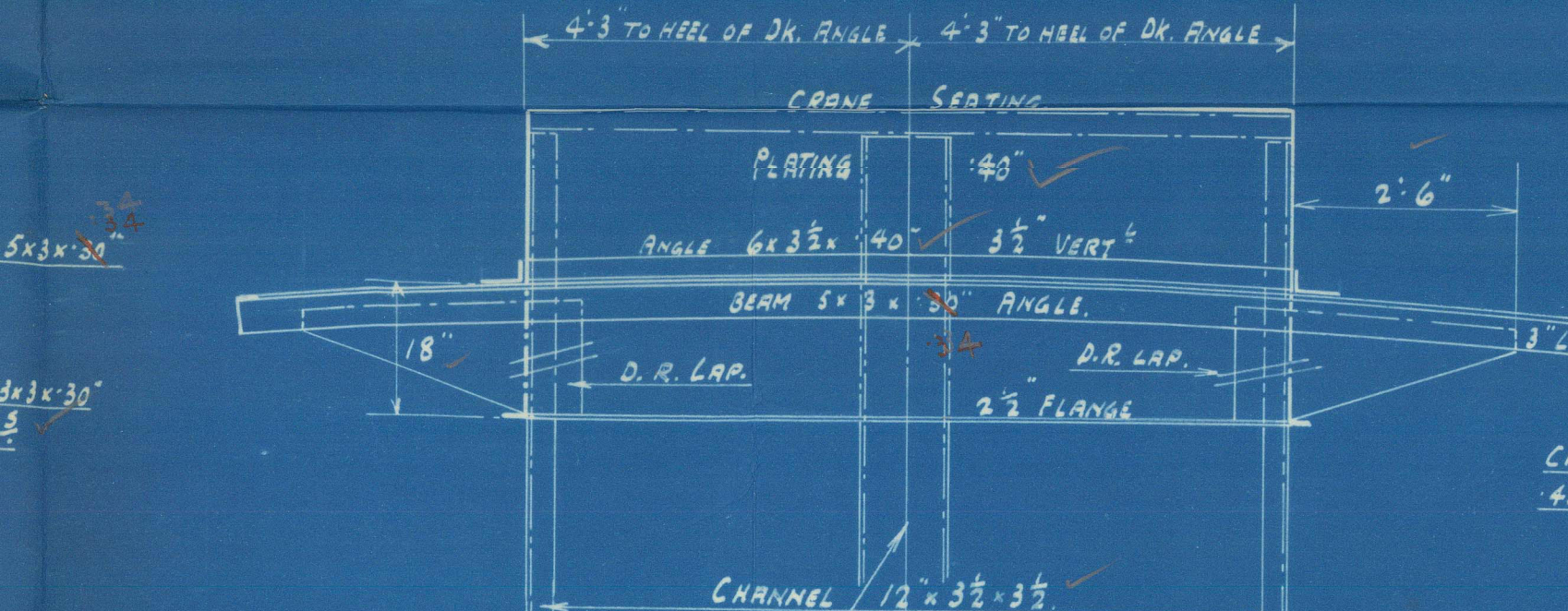
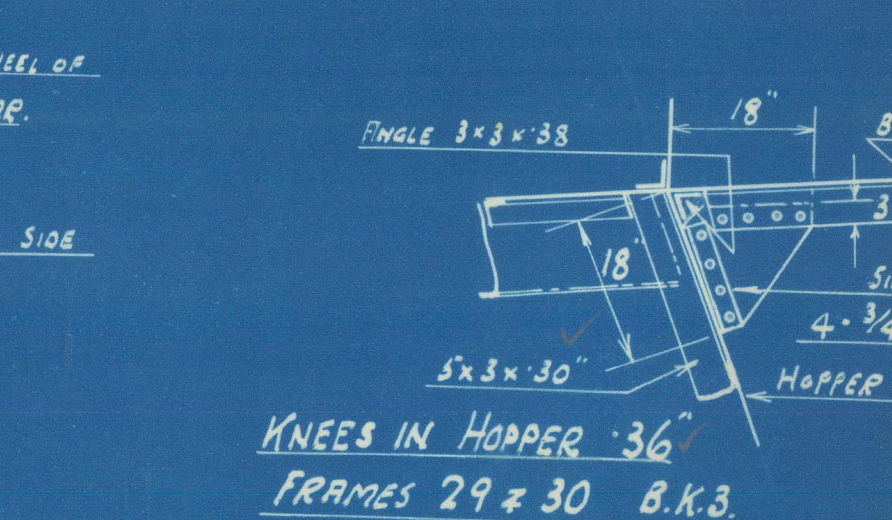
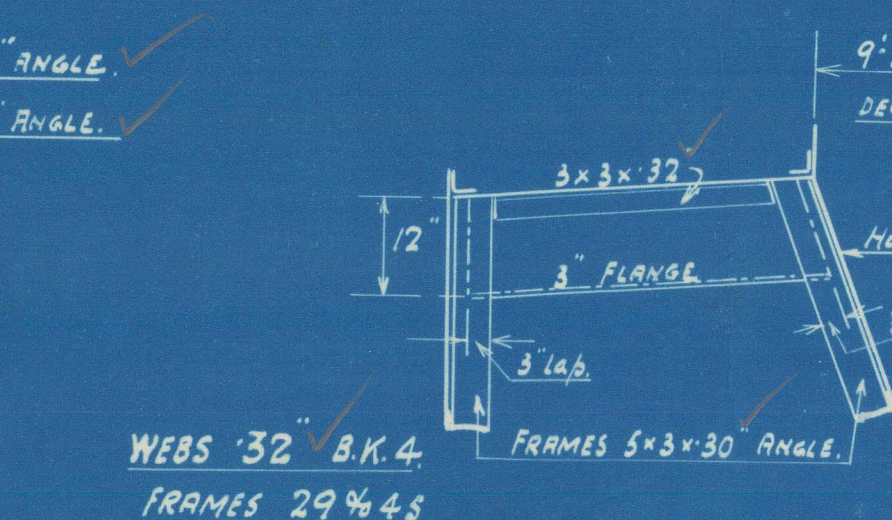
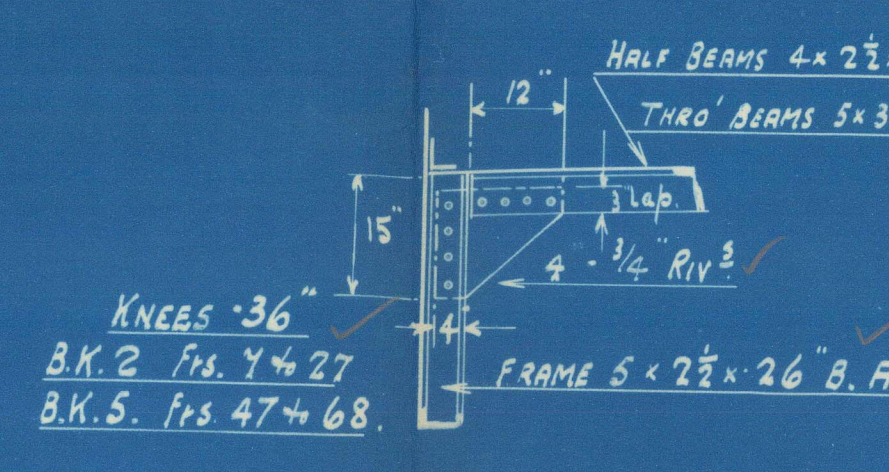
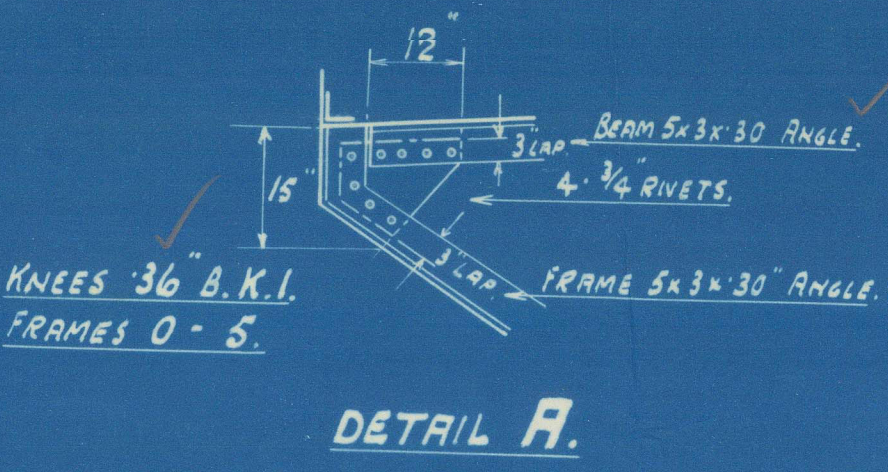
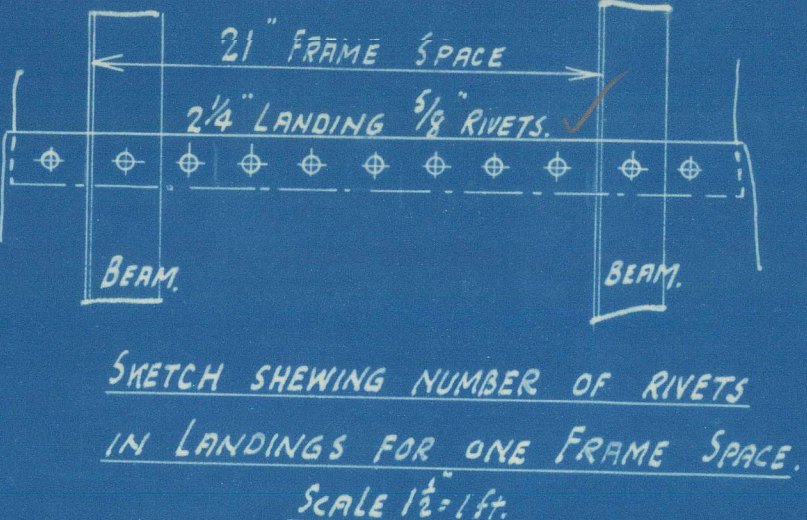
PARTS CONNECTED		RIVETING LIST (CONT'D)		SPACING		MATERIAL		HEAD		POINT		STYLE	
CASING ANGLE TO CASING	✓	32"	5/8"	4"	3/8"	IRON	PAN	C.S.K.				SINGLE CHAIN	
HOPPER COAMING ANGLE TO DECK	✓	32"	5/8"	4"	3/8"								
TO COAMING	✓	40"	5/8"	4"	3/8"								
W.T. BULKHEAD BEAMS TO DECK	✓	32"	5/8"	4"	3/8"								
CRANE SEATING ANGLE TO DECK	✓	25"	5/8"	4"	3/8"								
--- TO SEATING	✓	40"	5/8"	4"	3/8"								
OTHER DECK ANGLES TO DECK	✓	25"	5/8"	4"	3/8"								
--- VERTICAL	✓	30"	5/8"	4"	3/8"								
BEAM KNEES	✓	36"	5/8"	4"	3/8"								

MAIN DECK PLATING PLAN

Nº 288

SCALE: 1/4" = 1 ft.
DETAILS: 1/2" = 1 foot.

FERGUSON BROS.
(PORT-GLASGOW) LTD
SHIPBUILDERS & ENGINEERS



- LIST OF MATERIAL TO BE GALVANISED.
- MAIN DECK STRINGER PLATES
 - MAIN DECK PLATING
 - STRINGER ANGLES
 - GUTTERWAY ANGLES
 - CASING DECK ANGLES
 - HOPPER COAMING DECK ANGLES
 - WINCH SEATING
 - CRANE
 - COMPANION
 - SKYLIGHT
 - SCUTTLE

REF Nº 288 PLAN Nº 4 24/10/27

Nº 288
HP 4
H.M.C.
24/10/27

8

Main Deck Plan.

Ferguson Bros.

288

26-10-27.

Sir William A. Ruckburn.

288

015355-015365-0116



© 2021

Lloyd's Register
Foundation