

CAPE TOWN CASTLE

No. 986.

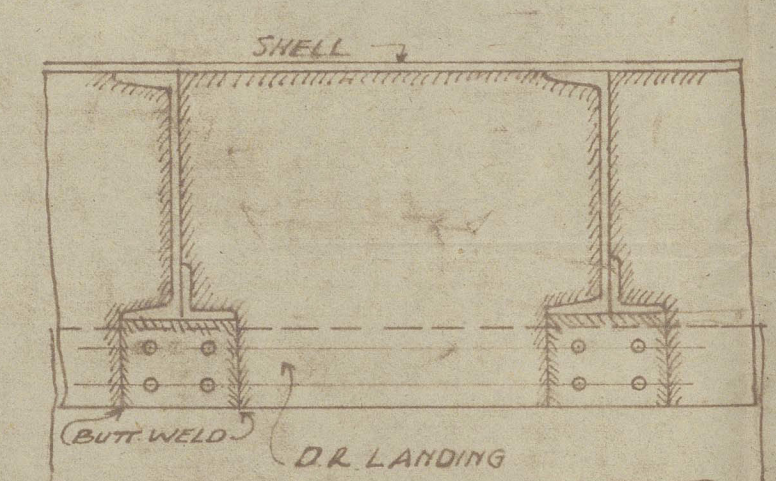
BALLAST TANK SECTIONS

SCALE 1/4" = 1 FOOT

CODE No. 101

LIST OF INTERCOSTAL PLATES FORWARD OF FRAME 15 FORD

MARK	NO.	LEN.	B. TANK	LOCATION
1	36	4'-3"	52	FR 13-63 10'-0" FRI
2	10	4'-0"	52	39-64 17'-0"
3	1	3'-2"	52	64-65
4	04	3'-8"	52	15-47 25'-0"
5	24	2'-7"	52	63-75 3'-6"
6	24	2'-3"	52	75-107
7	22	4'-3"	52	75-107 7'-0"
8	24	4'-3"	52	63-75
9	12	2'-3"	52	86-92
10	18	2'-7"	52	63-75 10'-6"
11	18	2'-3"	52	75-84
12	10	4'-1"	52	63-71 12'-0"
13	03	2'-7"	52	71-75
14	2	2'-2"	52	75-79



POSITION	ANET	PITCH	QWS	REMARKS
VERT. ANGLES TO CEILING	1	210	5	SEE DETAIL OF ANG. PLAT
CEILING VERTICALS TO FLOORS	7/8	438	5	UNDER ENGINES
TANK FRAMES TO SHELL 325 SPACING	1	638	7	AT OT OR WT DIVISIONS
TO FLOORS	7/8	638	7	FORWARD OF 15 LENGTH
REVERSE FRAMES TO FLOORS	1	638	7	AT OT OR WT DIVISIONS
TANK TOP	1	638	7	IN ENGINE ROOMS
TO FLOORS	1	638	7	AT OT OR WT DIVISIONS
INTERCOSTAL VERTICAL ANGLES	7/8	638	7	SEE DETAIL
STIFFENERS TO FLOORS	1	638	7	UNDER ENGINES
FLOORS TO MARIN PLATE	1	638	7	OUTWARD OF ENGINES
CONTINUOUS GIRDER TO SHELL	1	638	7	AT OT OR WT DIVISIONS
TANK TOP LANDING 325 SPACING 8" PER 1/8" RYS PER SPACE	1	638	7	SEE DETAIL
BUTTS	1	638	7	WHERE SHIP ANGLE OT OR WT
MARGIN ANGLE TO SHELL	1	638	7	WHERE SHIP ANGLE OT OR WT
PLATE FLANGE TO TANK TOP	1	638	7	WHERE SHIP ANGLE OT OR WT
GUSSET PLATE TO TANK TOP	1	638	7	WHERE SHIP ANGLE OT OR WT
CEILING GIRDER TOP ANG TO TANK TOP	1	638	7	WHERE SHIP ANGLE OT OR WT
INTERCOSTAL ANGLES TO TANK TOP	1	638	7	WHERE SHIP ANGLE OT OR WT
CONTINUOUS GIRDER ANG TO TANK TOP	1	638	7	WHERE SHIP ANGLE OT OR WT
WATER TIGHT ANG TO TANK TOP	1	638	7	WHERE SHIP ANGLE OT OR WT
OIL FUEL BURNER ANG WELDED TO TANK TOP	1	638	7	WHERE SHIP ANGLE OT OR WT
DOUBLING TO TANK TOP	1	638	7	WHERE SHIP ANGLE OT OR WT
PLATING OVER LUMBERS	1	638	7	WHERE SHIP ANGLE OT OR WT
GUSSET PLATES TO FRAME BOTS	1	638	7	WHERE SHIP ANGLE OT OR WT
TO TANK N TWO RIVET LINE	1	638	7	WHERE SHIP ANGLE OT OR WT
50 AND NOT EXCEEDING 75 1/8 RIVETS	1	638	7	WHERE SHIP ANGLE OT OR WT
75	1	638	7	WHERE SHIP ANGLE OT OR WT
84	1	638	7	WHERE SHIP ANGLE OT OR WT
114	1	638	7	WHERE SHIP ANGLE OT OR WT

POSITION	ANET	PITCH	QWS	REMARKS
TOP LONGITUDINAL ANG TO TANK TOP	1	638	7	WHERE SHIP ANGLE OT OR WT
VERT. ANG TO LONGITUDINAL PLATE	1	638	7	WHERE SHIP ANGLE OT OR WT
BOTTOM LONGITUDINAL ANG TO SHELL	1	638	7	WHERE SHIP ANGLE OT OR WT
GIRDER BOTS	1	638	7	WHERE SHIP ANGLE OT OR WT
TOP LONGITUDINAL ANG TO TANK TOP	1	638	7	WHERE SHIP ANGLE OT OR WT
VERT. ANG TO LONGITUDINAL PLATE	1	638	7	WHERE SHIP ANGLE OT OR WT
BOTTOM LONGITUDINAL ANG TO SHELL	1	638	7	WHERE SHIP ANGLE OT OR WT
TO TANK N TWO RIVET LINE	1	638	7	WHERE SHIP ANGLE OT OR WT
50 AND NOT EXCEEDING 75 1/8 RIVETS	1	638	7	WHERE SHIP ANGLE OT OR WT
75	1	638	7	WHERE SHIP ANGLE OT OR WT
84	1	638	7	WHERE SHIP ANGLE OT OR WT
114	1	638	7	WHERE SHIP ANGLE OT OR WT

MARGIN PLATE BUTTS 12" AND 42" 75 RIVETS SPACED 36" APART



"Capetown Castle"

Plan received from Belfast showing
cracking of frames at inner bottom
forward

Aug 1946

RPT NO Bel 14313



© 2021

Lloyd's Register
Foundation

015348-015354-0036