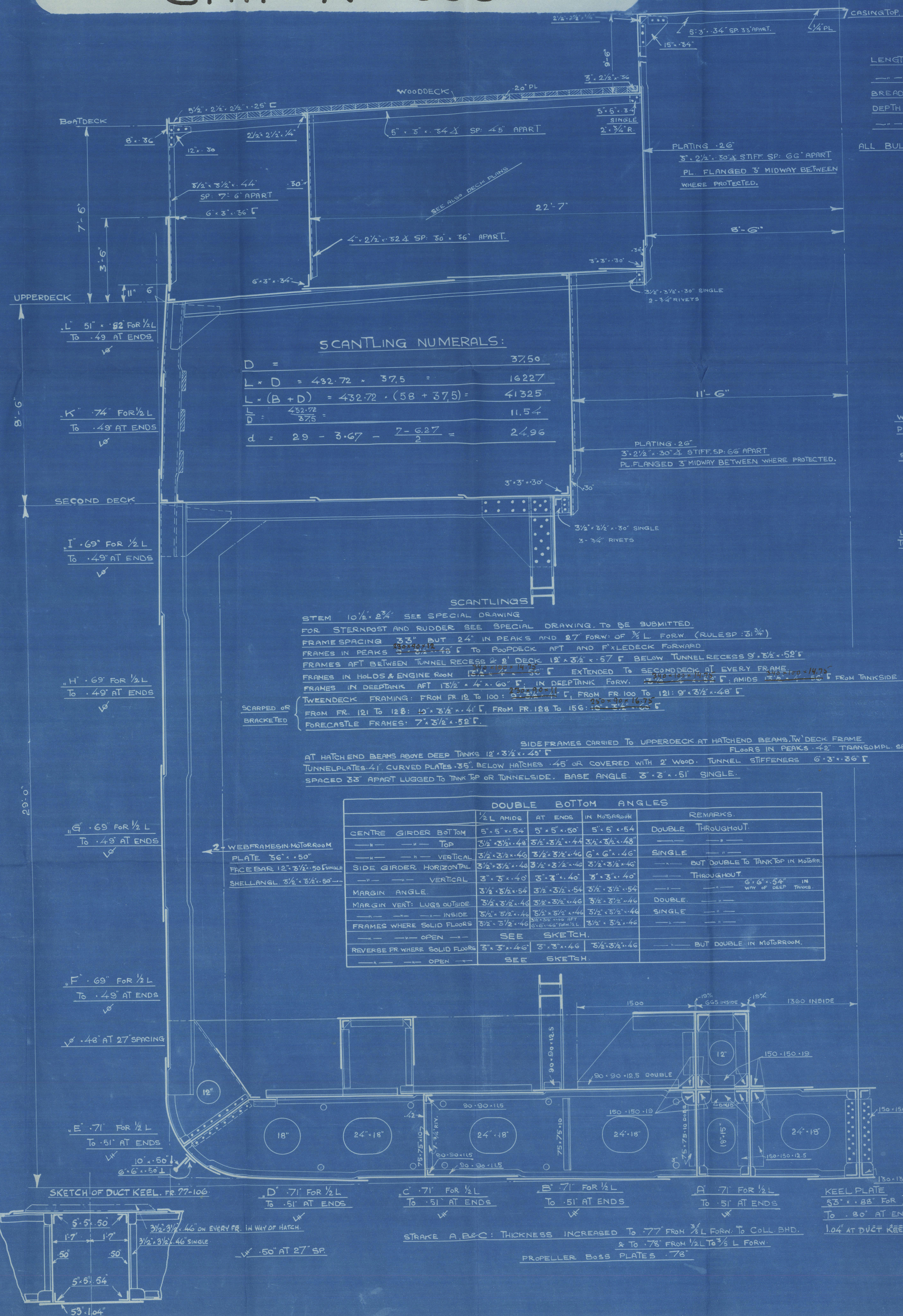


SHIP No 653.

MIDSHIP SECTION. SCALE: 1/2"=1'-0"

EQUIPMENT.		
NUMBER	UNDER	UPPERDECK
HOUSES		61.4
FORECASTLE AND POOP		51.2
EQUIPMENT NUMERAL		42.52.6

2 BOWER ANCHORS EACH	7 1/2 CWT STOCKLESS
1 ANCHOR	62
1 STREAM	2 1/2 Ex STOCK
300 FATHOMS	2 1/2 STUD CHAIN CABLE
120	5 STEELWIRE (6.12)
150	5 (6.24)
2 HAWSEERS EACH	100 FATHOMS 8 HEMP OR 2 1/2 STEELWIRE
2 WARPS	100 8 2 1/2



LENGTH BETW. P.P. 430'-0"

BREADTH MOULDED 58'-0"

DEPTH 29'-0"

TO 2 DECK 29'-0"

TO UPPERDECK 37'-6"

ALL BULBANGLE SECTIONS ARE NEW BRITISH STANDARD.

SINGLE SCREW CARGO SHIP.

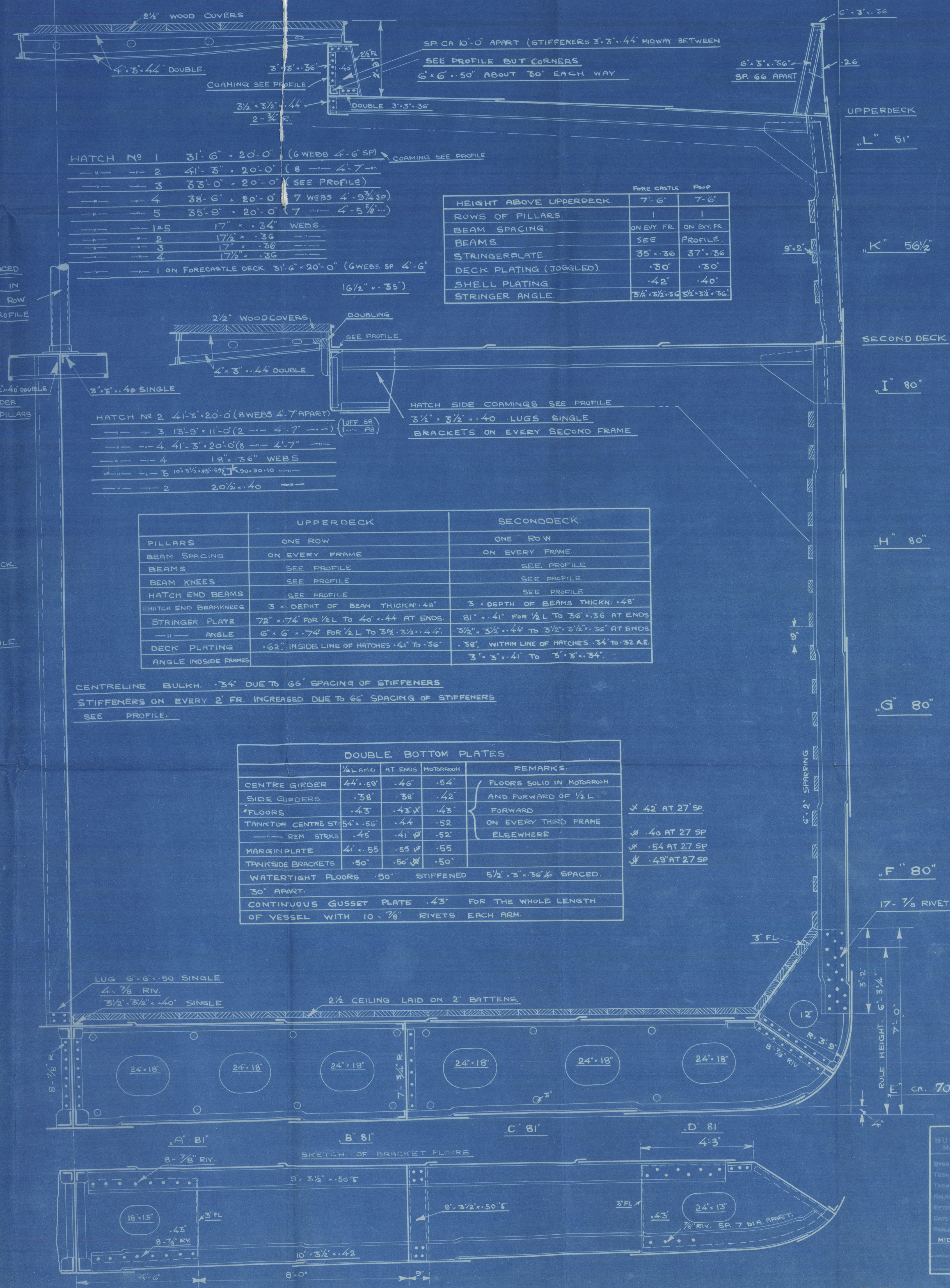
VESSEL TO BUILT TO CLASS LLOYDS 100 A.I.

AS A FULL SCANTLING VESSEL WITH POOP & FORECASTLE

AFT DEEP OIL FUEL TANKS AS PER PROFILE

DOUBLE BOTTOM ARRANGED TO CARRY WATER BALLAST.

OR A FUEL OIL FUEL OF A FLASHPOINT ABOVE 150° FAHRENHEIT.



SHIP No 653

247

2-10-42

MIDSHIP SECTION



Midships Section  
as built  
for  
Yard No. 653  
being built by  
A/S. Burmeister & Wain.



Copenhagen Report No 11475



© 2021

Lloyd's Register  
Foundation

015338-015347-0245