

— M I D S H I P S E C T I O N —

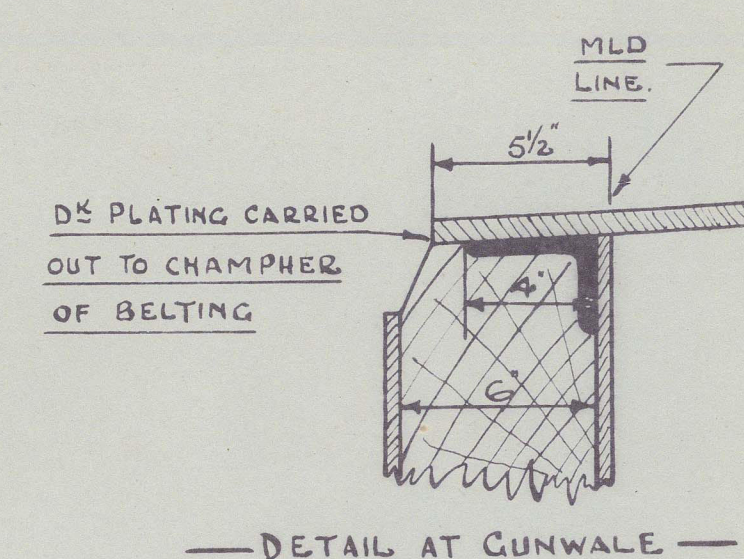
—EQUIPMENT.—

ANCHORS & CABLES SUPPLIED BY ADMIRALTY.					
2	AT	150	FATHS.	4"	CIRC. G.F.S.W.R. FOR STERN ANCHOR
1	"	45	"	2 1/4"	" " " STREAM ANCHOR
1	"	75	"	2 1/2"	" " " TOWLINE
1	"	90	"	1 3/4"	" " " HAWSER.

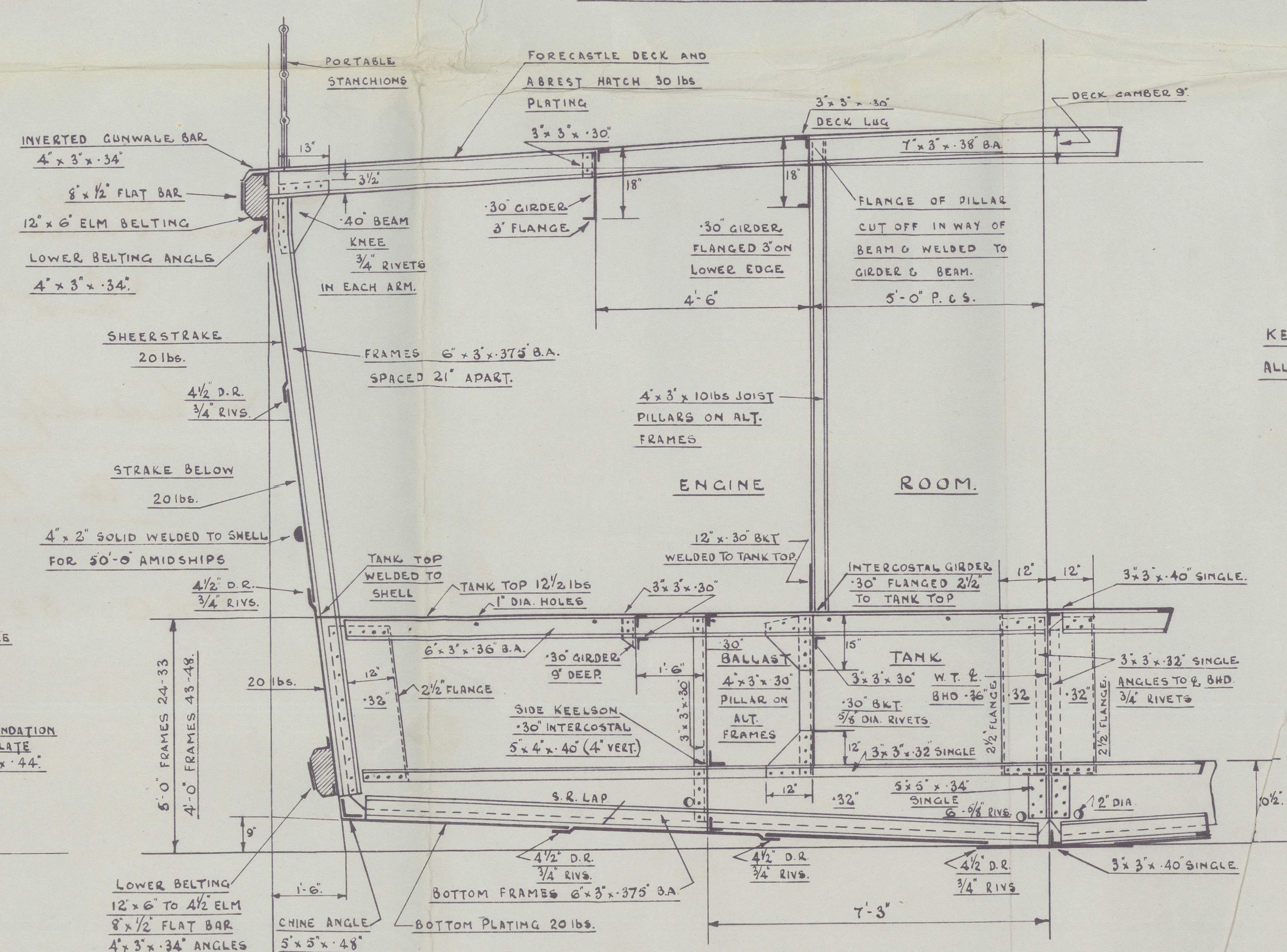
— LLOYDS NUMERALS —

KEEL & BOTTOM PLATING SEAMS.	DOUBLE RIVETED	4 1/2" LAPS	3/4" RIVETS THROUGHOUT
SHEERSTRAKE & SIDE PLATING SEAMS	"	"	"
KEEL BUTTS	TREBLE RIVETED	16 3/4" BUTTSTRAPS	7/8" RIVETS.
SHEERSTRAKE BUTTS	TREBLE RIVETED	7 1/2" LAPS FOR 1/2 LENGTH - DOUBLE RIVETED	5" LAPS AT ENDS - ALL 3/4" RIVETS
STRAKE BELOW BUTTS.	"	"	"
BOTTOM PLATING BUTTS	"	"	"
SIDE PLATING ELSEWHERE	"	"	"
UPPER DECK SEAMS & BUTTS	FLUSH BUTT WELDED - SEE DETAIL BELOW		
C&S KEELSON & FOUNDATION PLATE BUTTS.	FLUSH BUTT WELDED.		
ALL RIVETS THROUGH 30LBS. DECK PLATING, HATCH FOUNDATION ANGLE & STRINGER ANGLE	7/8" DIA.		
"	3/8"	CASING	3/4" DIA.

— METHOD OF WELDING SEAMS & BUTTS OF D& PLATING —



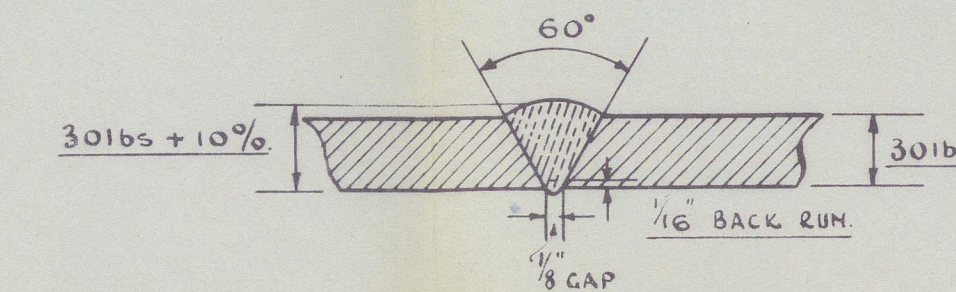
BOX BEAMS FITTED IN WAY OF CAPSTAN & WINCHES



KEEL PLATES NOT JOGGLED
ALL SHELL SEAMS JOGGLED

—SECTION THRO' ENGINE ROOM—

GAUGE OF ELECTRODES		
1ST RUN	8	MUREX
SUBSEQUENT RUNS	6	FASTEX
BACK RUN	6	SYSTEM



— PRINCIPAL SCANTLINGS —

SIDE C BOTTOM FRAMES $6' \times 3' \times 3\frac{3}{8}"$ B.A. -475' IN BOILER RM 21' APART
FLOORS $20\frac{1}{2}' \times 32'$ ORDINARY $20\frac{1}{2}' \times 42'$ IN BOILER RM
BEAMS $1' \times 3' \times 3\frac{3}{8}"$ B.A.
REVERSE BARS $3' \times 3' \times 32'$ SINGLE -42' IN BOILER RM.
STEM $6' \times 1\frac{1}{2}"$ $2\frac{1}{2}' \times 3\frac{3}{4}"$ COP
WELDED

C² KEELSON
C² THRO' PLATE .34" - .44" IN B.R.
RIDER PLATES 12" x .34" - .44" IN B.R.
TOP ANGLES 4" x 3" x .30" DOUBLE
(4" VERT.) .40" IN B.R.

$6'-3"$
 30lbs PLATE IN WAY OF CABLE
 SLIDE
 10lbs PLATE IN SECTIONS
 COVERING HOLD CEILING

SIDE KEELSON
 30" INTERCLE PLT
 TOP ANGLE 5" x 4" x 40" SINGLE
 (4" VERTICAL)
 SHELL LUGS 3" x 3" x 30" SINGLE

BILG
 $2\frac{1}{2}"$ F

BILGE BRACKETS
 $2\frac{1}{2}$ " FLG ON EDGE
 $\frac{3}{4}$ " RIVS.
 20%
 SINGLE
 SINGLE

—SECTION THRO' HOLD—

Messrs. Fellows & Co. Ltd. ^{SPANT}

Land n^o 354.

Midship Section

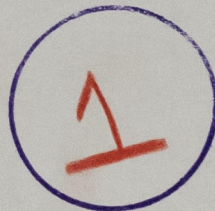
As. Built.

" -/C. 325 "



MIDSHIP SECTION

RECORDS DEPT.,
LONDON.



© 2021

Lloyd's Register
Foundation

015284-015291-0030