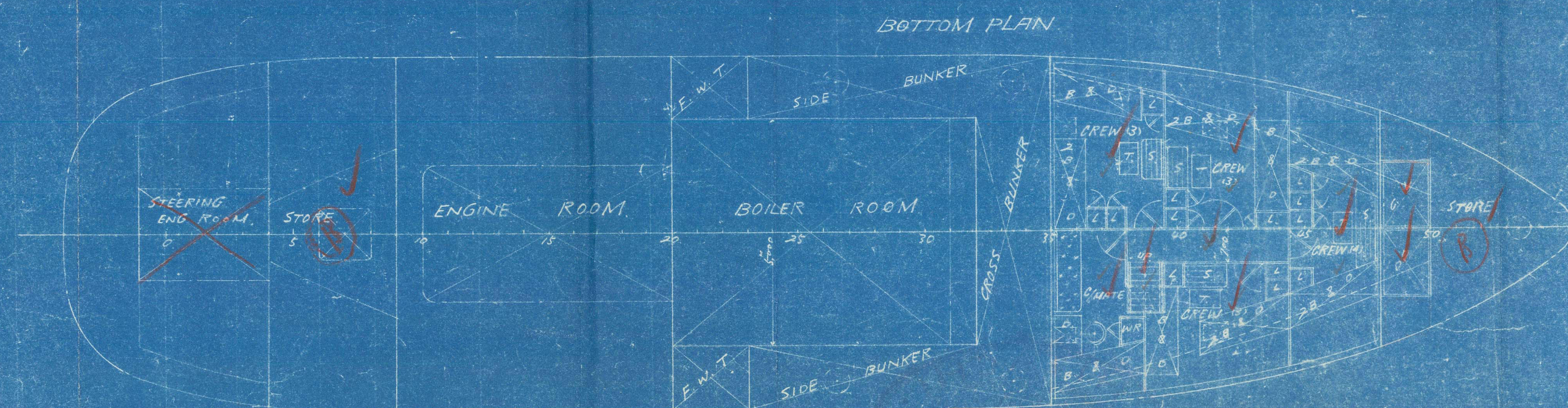
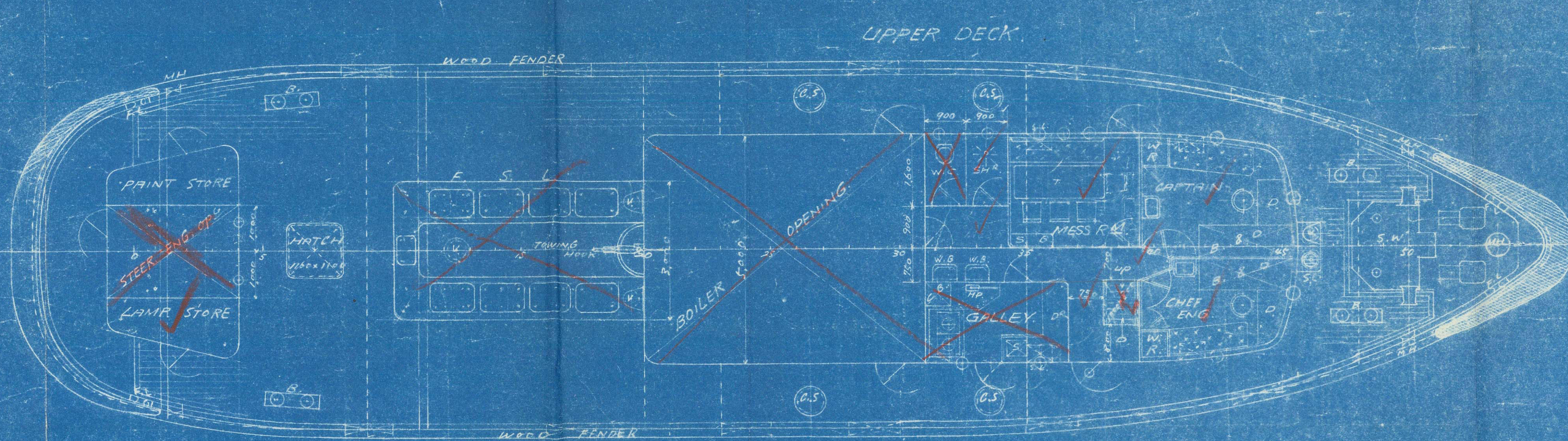
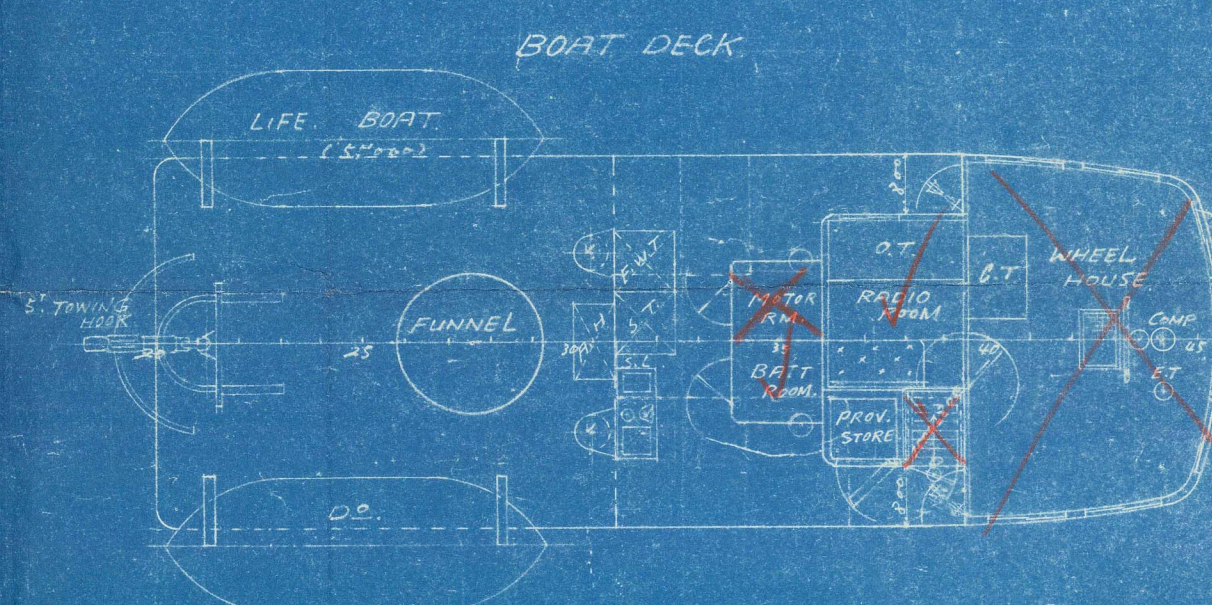
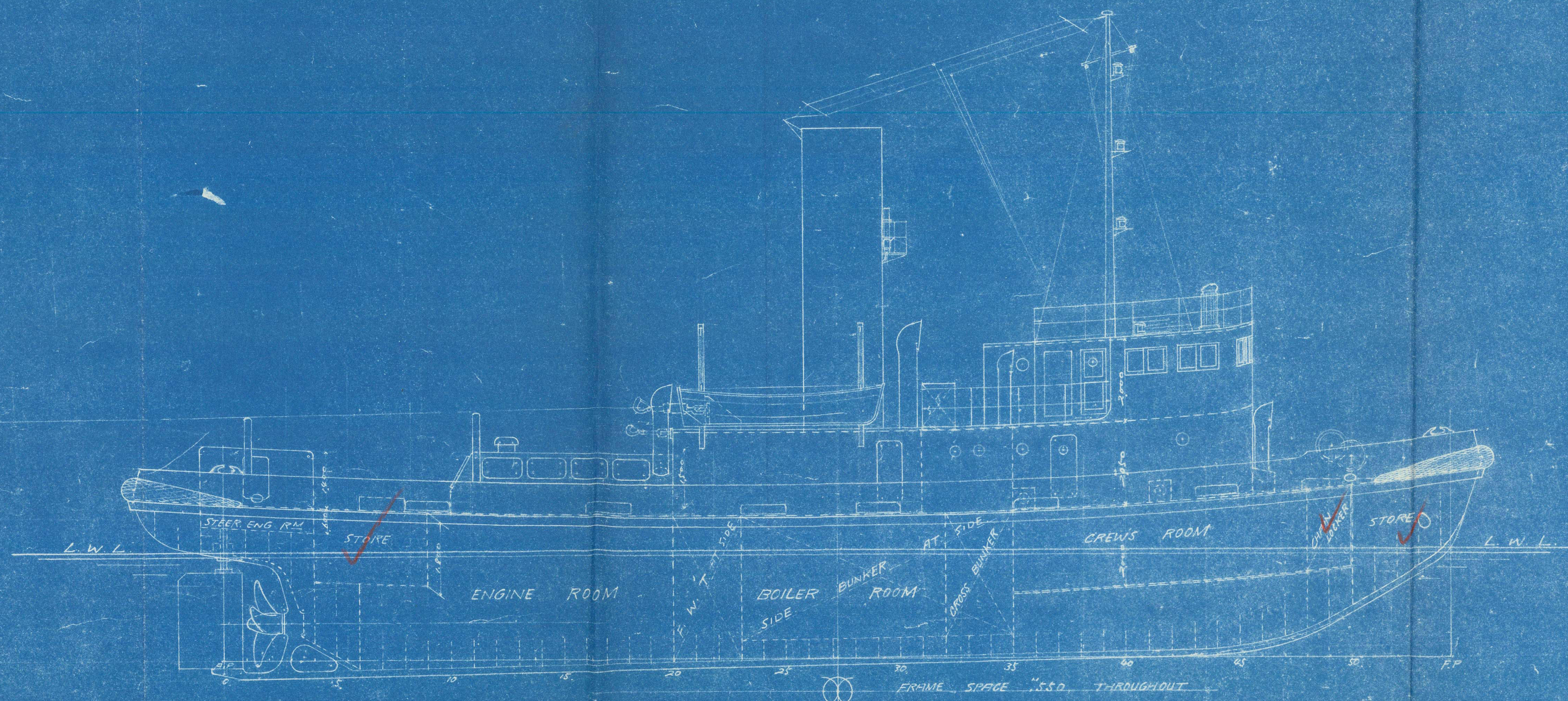


ALTERATIONS			
No.	date	Notes	Deciding to
1.	6/10 '55	mess room, galley etc	Approved (20 May 1955)
2.	10/2 '54	Radio room, Motor & Battery	



PRINCIPAL PARTICULARS	
LENGTH B.P.	32.00
BREADTH M.L.B.	7.80
DEPTH M.L.B.	3.50
DRAUGHT LOADED	2.65
COMPLEMENT	16 PER.
GROSS TONNAGE	187
SPEED	9.14 KNOTS
MAIN ENGINE	RECIPRO. 500 H.P.
BOILER	CYLINDR. 1 SET

SIN: 3756-7.		SINGLE SCREW STEAM TUG	
GENERAL ARRANGEMENT			
SCALE		1:100	
HITACHI SHIPBUILDING & ENGINEERING CO., LTD. - OFAKA, JAPAN -			
DESIGNING DIVISION		CHIEF OF DIV.	J. Inoue
SHIP DESIGN SECTION		CHIEF OF SECT.	T. Inoue
DATE	Nov. 22, 1954	REVIEWED BY	
DRAWING NO.	C-1	CHECKED BY	No. man 10
SHEET NO.	225179	DRAWN BY	M. S. Inoue
D. No. 2582			

015251-015268-015276



HITACHI SBozo

Law Nos. 3756/7

---

GEN-ARR'GT.

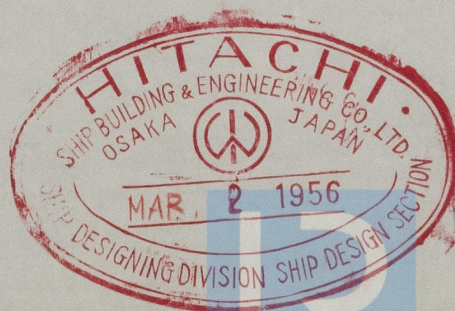


© 2021

Lloyd's Register  
Foundation

015253-015263-0286





© 2021

Lloyd's Register  
Foundation