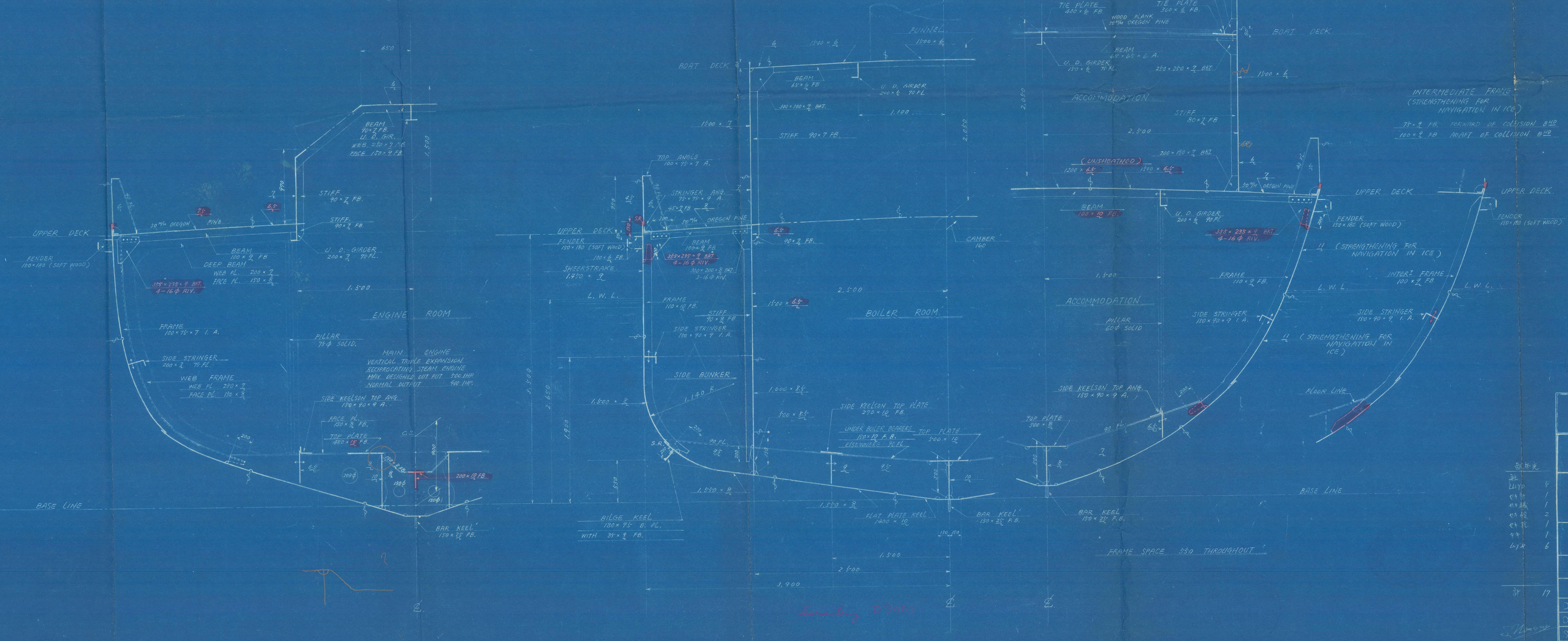


圖面來歷
昭和21年6月30日 批准
昭和21年7月30日 批准
高松

EQUIPMENT	NUMERAL	
$L \times (B + D) = 98.10 \times (25.59 + 11.48) = 3,636.59 \text{ (FT}^2\text{)}$		
EQUIPMENTS		
BOWER ANCHORS (STOCKLESS)	295 KG	2
WROUGHT IRON STUD LINK CHAIN CABLE	16" 15 FMS	6
FIBRE MOORING ROPES (4-STRAND)		
HAWSER	5 1/2" CIRCUMFERENCE	60 FMS
WARP	4" CIRCUMFERENCE	60 FMS

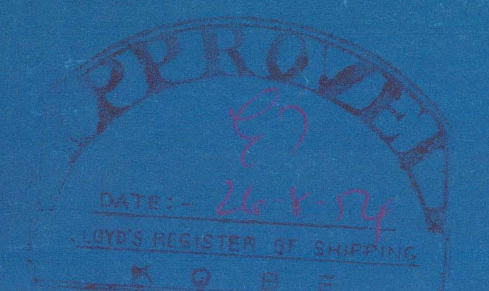
SINGLE SCREW STEAM TUG
CLASS
LLOYD'S REGISTER OF SHIPPING, *100 A1
FOR TOWING SERVICES.
"STRENGTHENED FOR NAVIGATION IN ICE"

PRINCIPAL DIMENSIONS		
LENGTH P.P.	29' 900	(98' 10)
BREADTH MOULDED	7' 800	(25' 59)
DEPTH MOULDED	3' 500	(11' 48)
DESIGNED DRAUGHT MOULDED	2' 650	(8' 69)
SCANTLING DRAUGHT MOULDED	2' 975	(9' 76)



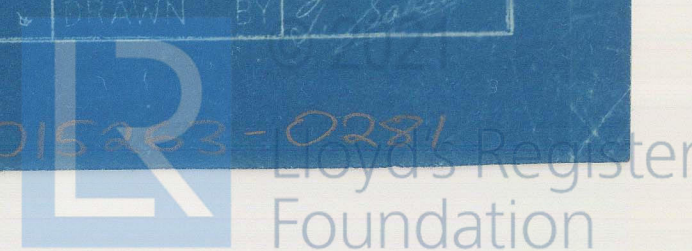
3756/9

Yard Nos 3756/3
83 2114
Shaw



V6 "TRANSMASHIMPORT" MOSCOW U. S. S. R.	
D. No 2582	SINGLE SCREW STEAM TUG
MIDSHIP SECTION SCALE 1/25	
HITACHI SHIPBUILDING & ENGINEERING CO. LTD. - OSAKA, JAPAN -	
DESIGNING DIVISION	CHEF OF DIV.
SHIP DESIGN SECTION	CHEF OF SECT.
DATE	JUNE, 30, 1954
DRAWING NO	H-0 1
SHEET NO	028743

015253-015253-0381



"KONDOR"

Hitachi S. & E. Co. Ltd.

Mukaishima Sfd.

KOBE RPT. NO.

DATED.

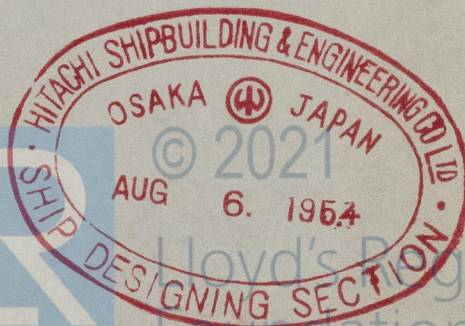
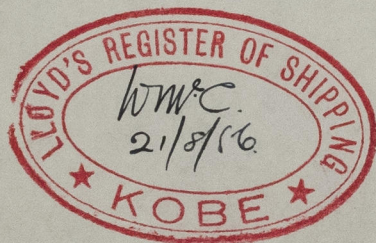
3798

Nos. 3756 and 3757.

Midship Section.

As Approved.

No. 3756 "KONDOR" Kobe Rpt. No. F.E. 3798 ✓
No. 3757 "JAGOCHA" Kobe Rpt. No. F.E. 3799 ✓



015253-015263-0281

ロイド
協会
行
と
部