

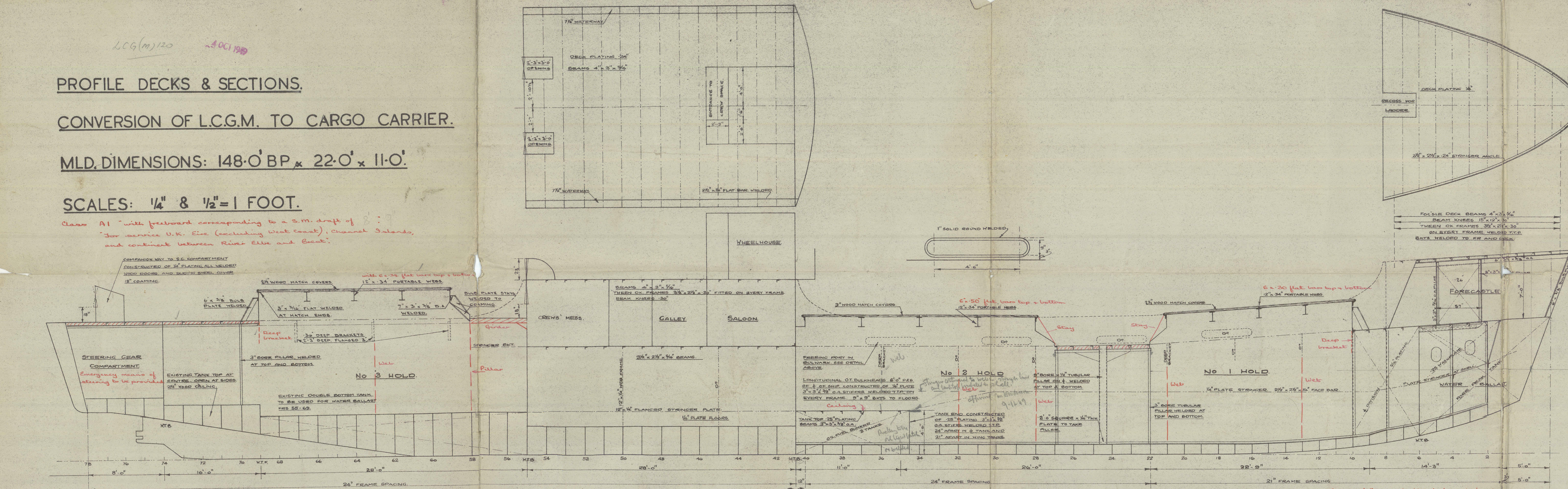
PROFILE DECKS & SECTIONS.

CONVERSION OF L.C.G.M. TO CARGO CARRIER.

MLD. DIMENSIONS: 148'-0" BP x 22'-0" x 11'-0".

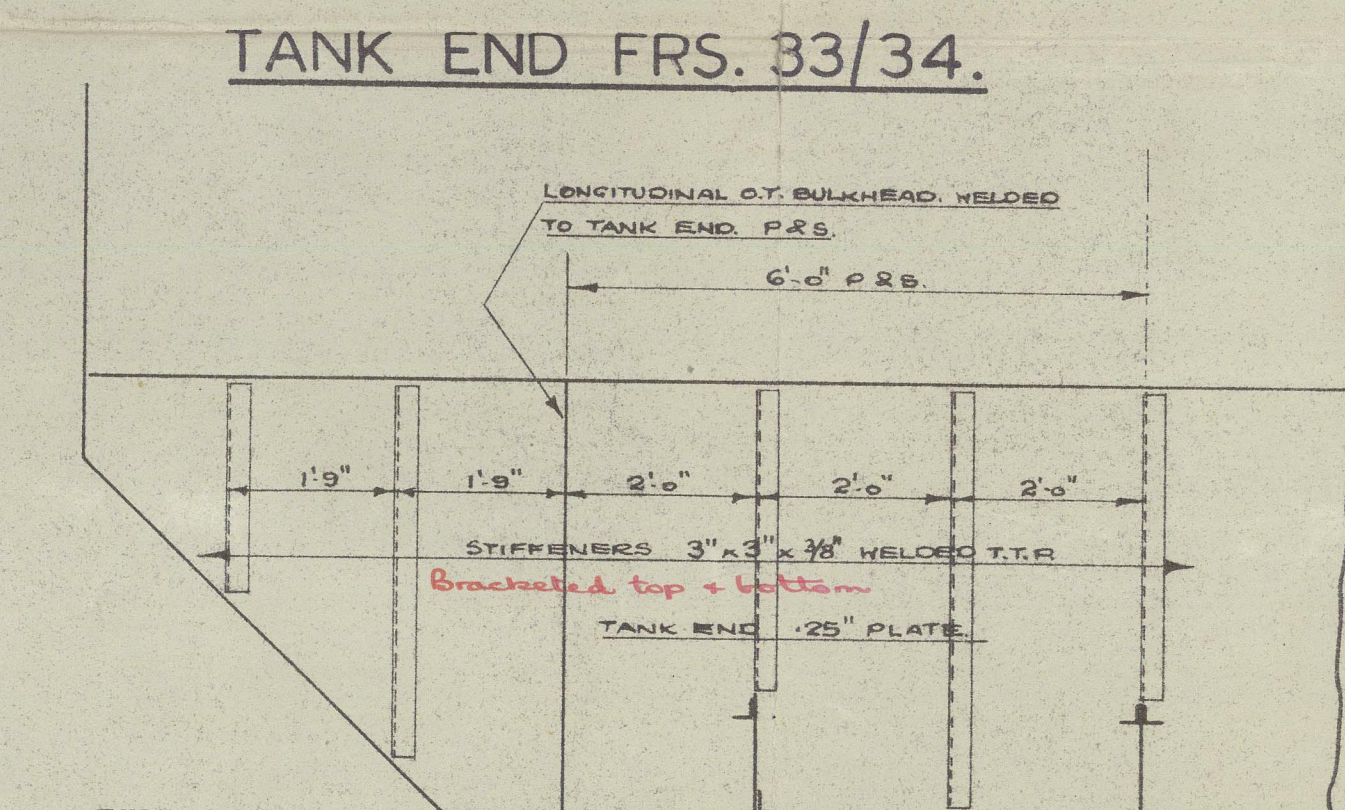
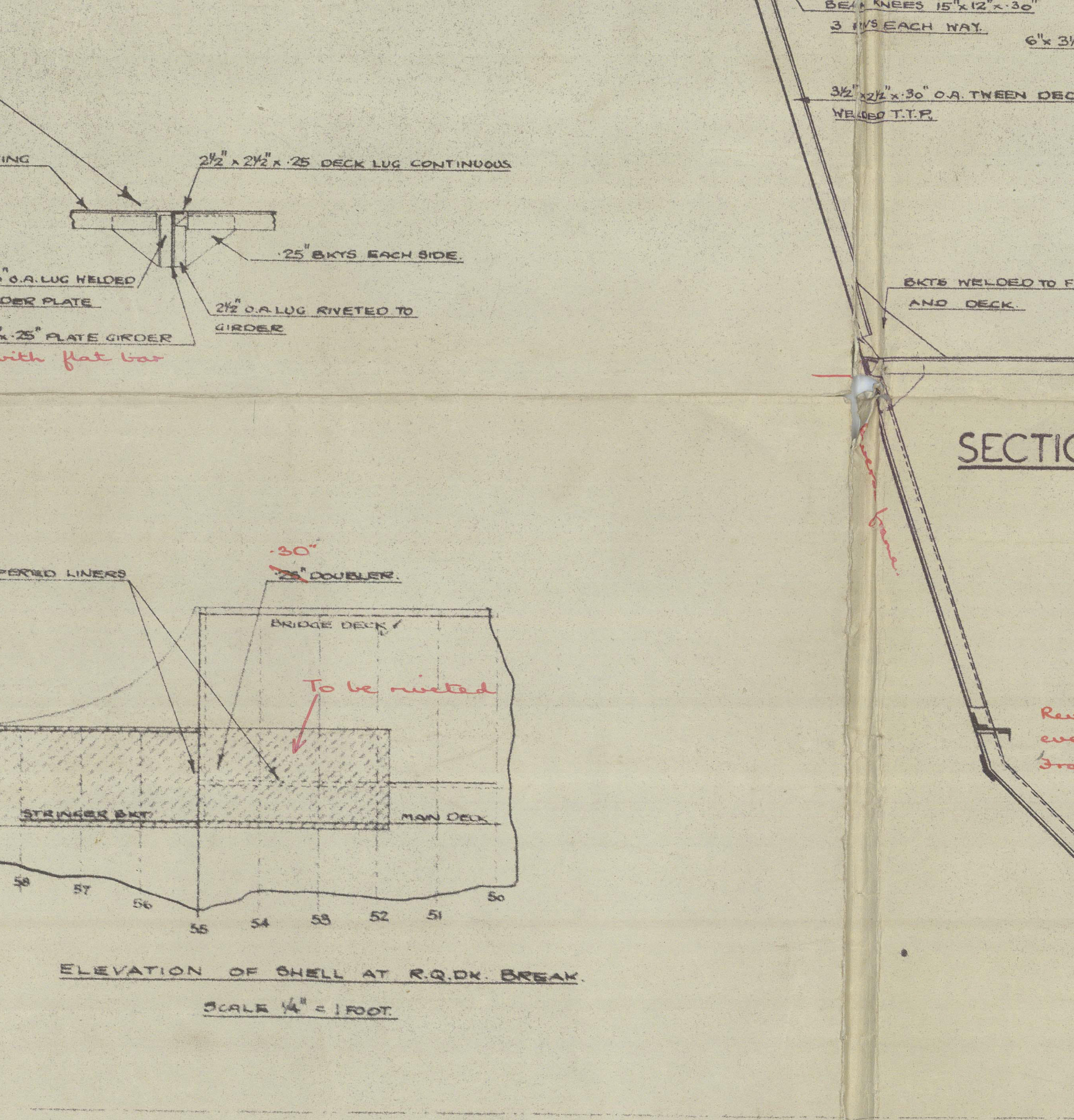
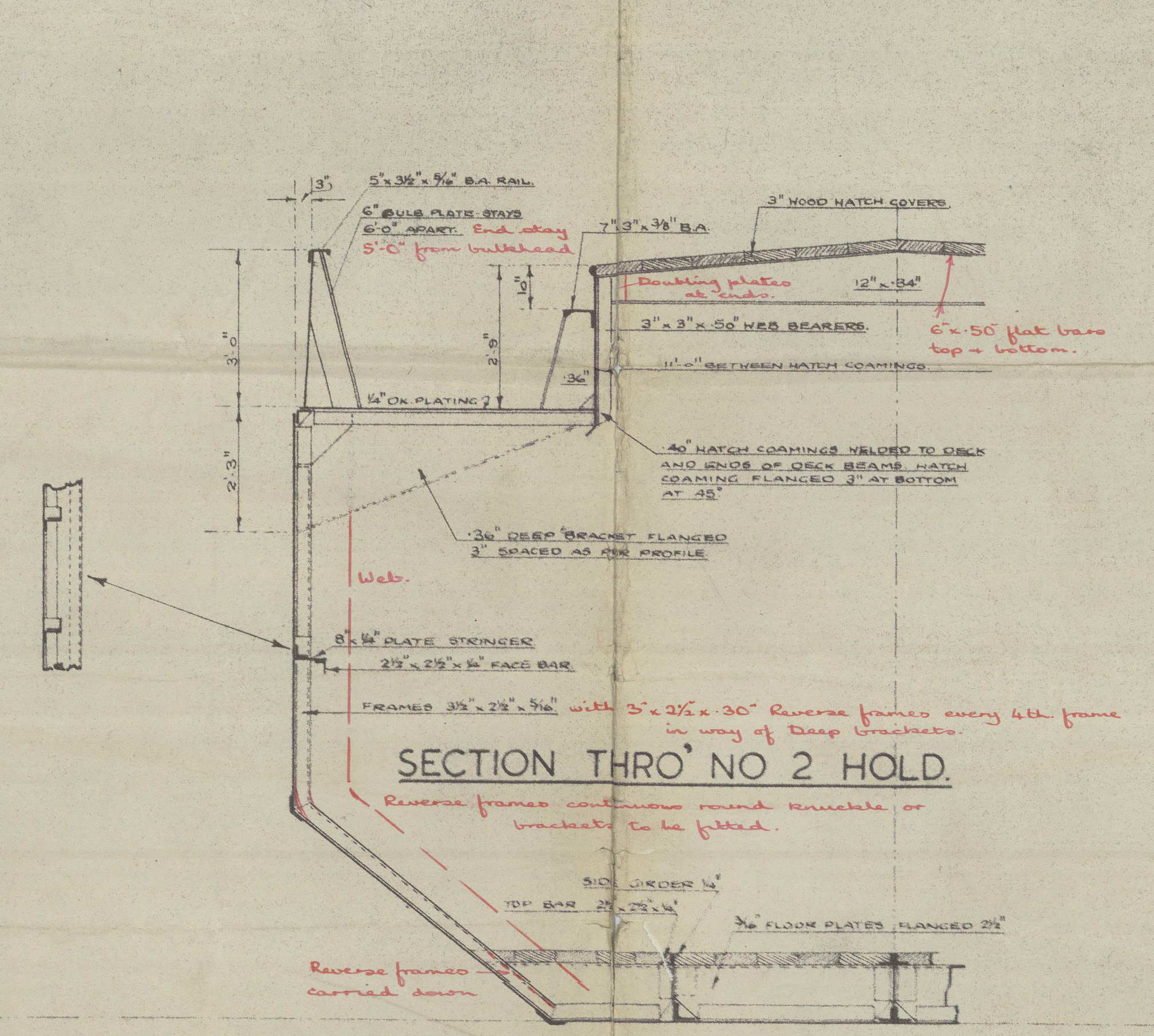
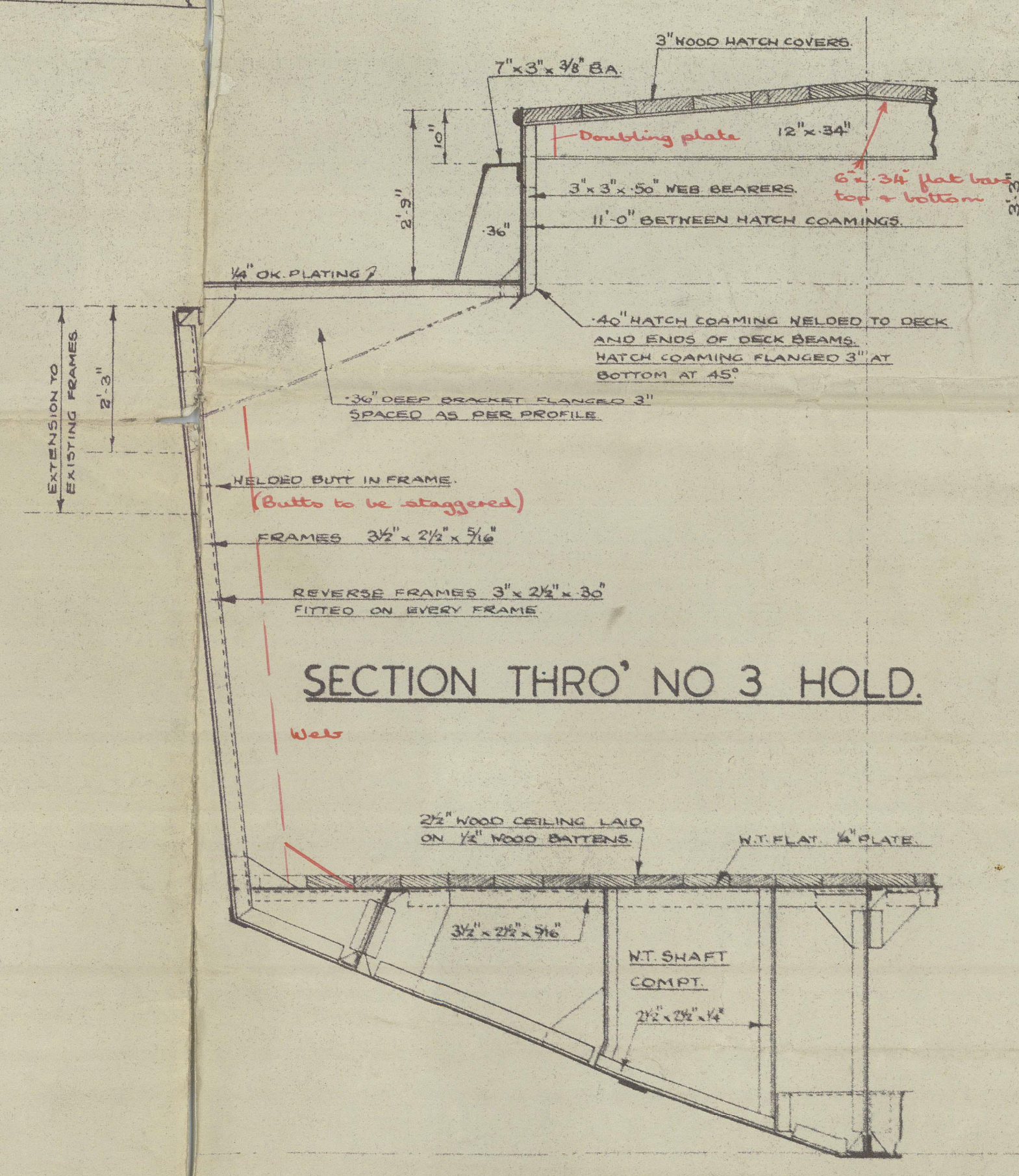
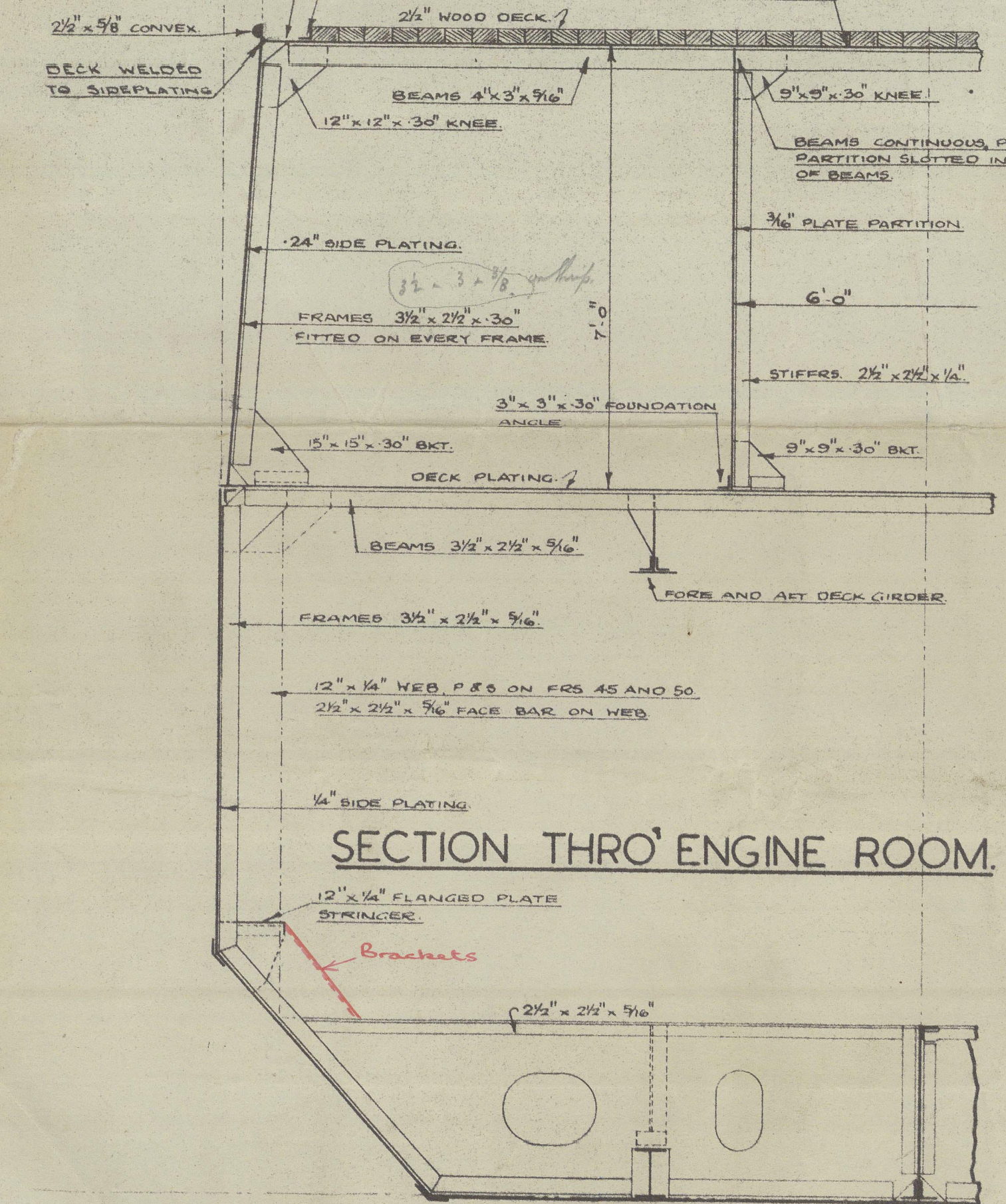
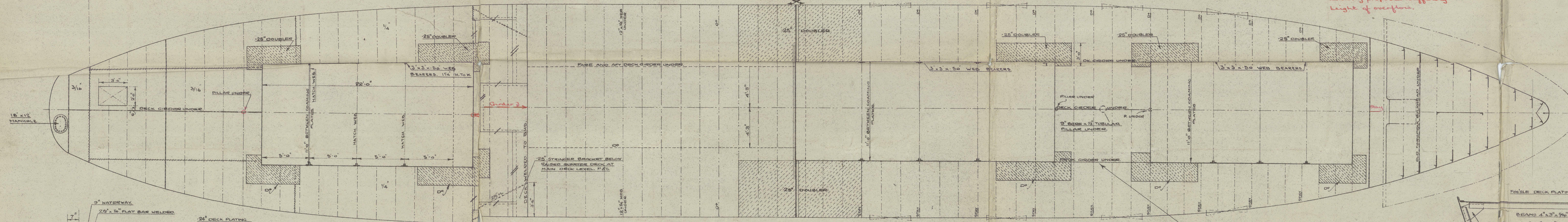
SCALES: 1/4" & 1/2" = 1 FOOT.

Class A1 with foreward corresponding to a S.M. draft of 1' 3" for service U.K. Sea (including West Coast), Channel Islands, and coast between River Elbe and Brest.



EQUIPMENT NUMERICAL	
L x (B + D)	148.0 x 22.0 + 11.0 = 4894.
B x D	22.0 x 11.0 = 242.0
BRIDGE DECK	28.0 x 7.00 x .75 = 147.0
FOCSE DECK	18.5 x 7.00 x .75 = 97.1
TOTAL	5296.1

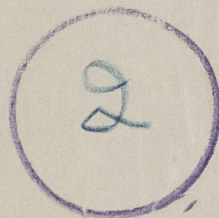
EQUIPMENT LETTER C	
2 BOWER STOCKLESS ANCHORS	TOTAL WEIGHT 10 1/4 CWT
1 STEEL ANCHOR BA STOCK	2 1/4 "
168 PATHS 3/4" x (1/4" OWNERS) = 1" OR STUD LINK CHAIN CABLE	
45 " 2 1/4" F.S.W. STREAM LINE	
75 " 2 1/2" F.S.W. TOWLINE	
90 " 1 3/4" F.S.W. HAWSE	



'Christina Dawn' ★

Profile, decks & sections

RECORDS DEPT.,
LONDON



015224-015232-0323

© 2021



Lloyd's Register
Foundation