

Nº 39 SHIP

STERNFRAME, RUDDER ETC.

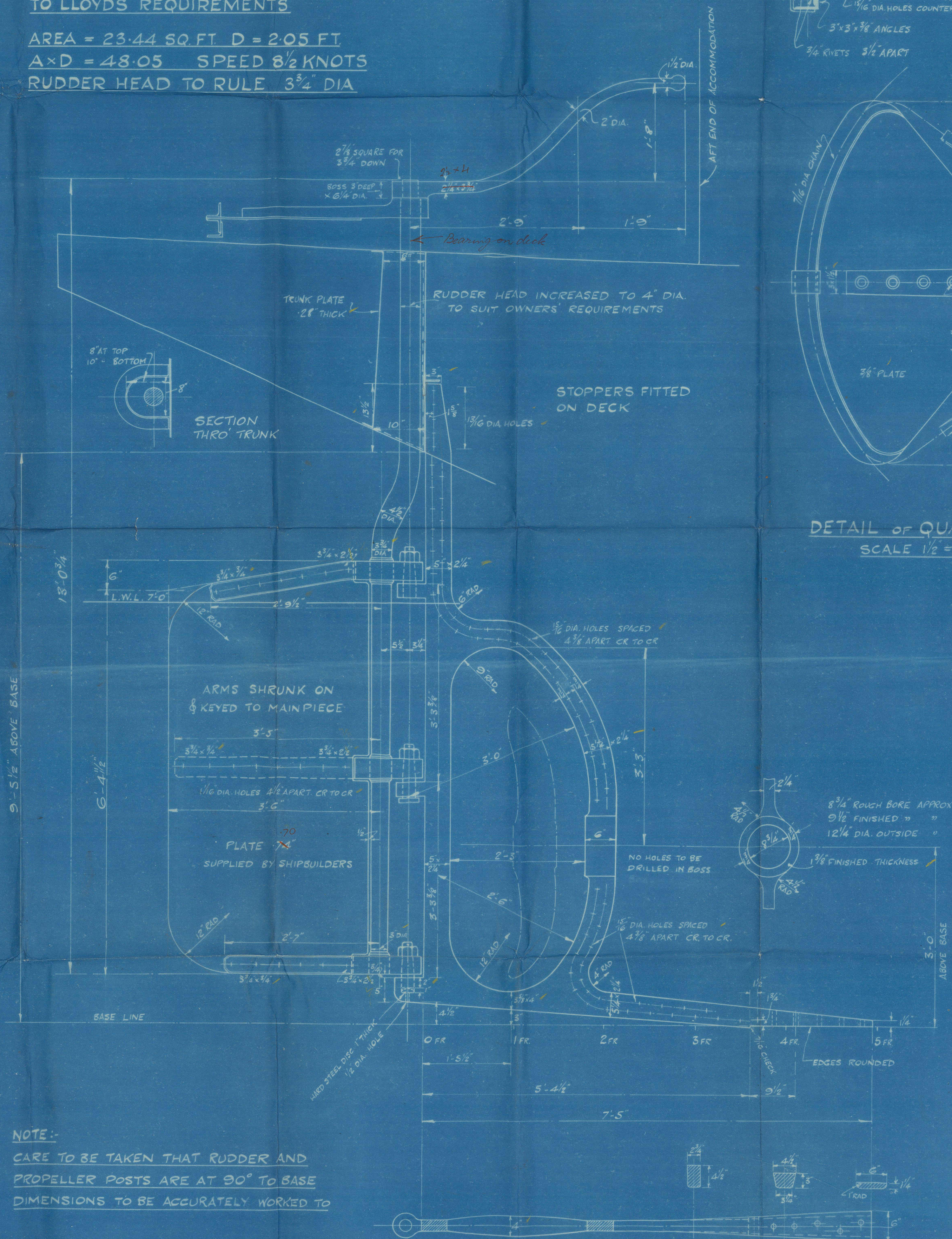
SCALE 1"=1FOOT

STERN FRAME OF FORGED SCRAP IRON
RUDDER FRAME OF BEST WROUGHT IRON
QUADRANT ARM AND TILLER OF FORGED OPEN HEARTH STEEL
TO LLOYDS REQUIREMENTS

AREA = 23.44 SQ. FT. D = 2.05 FT.

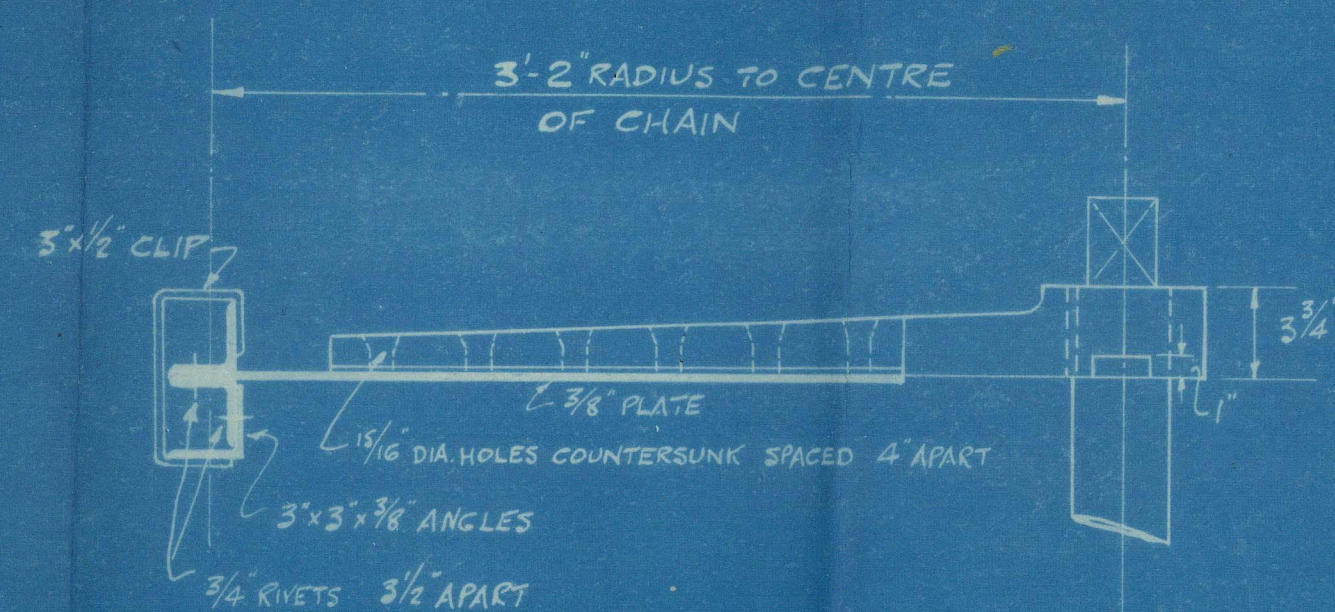
A x D = 48.05 SPEED 8½ KNOTS

RUDDER HEAD TO RULE 3½" DIA

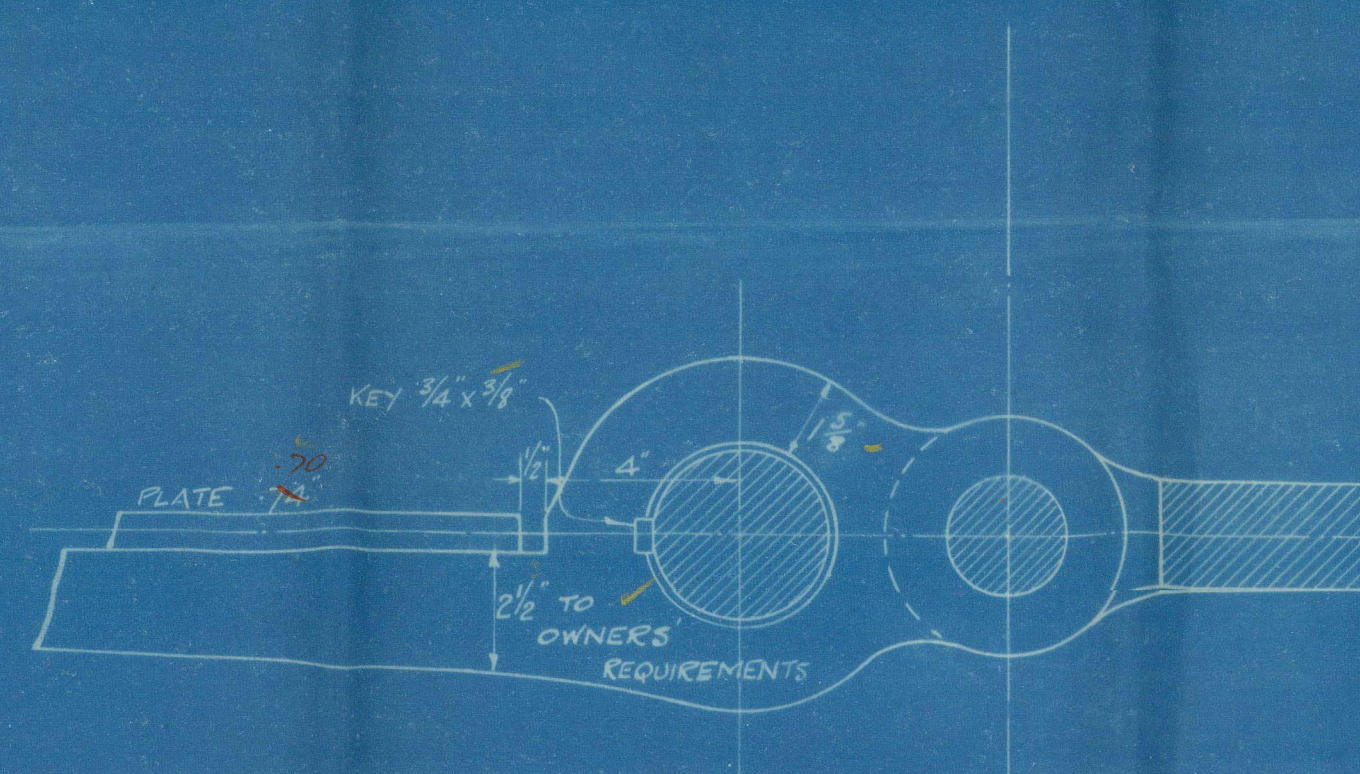
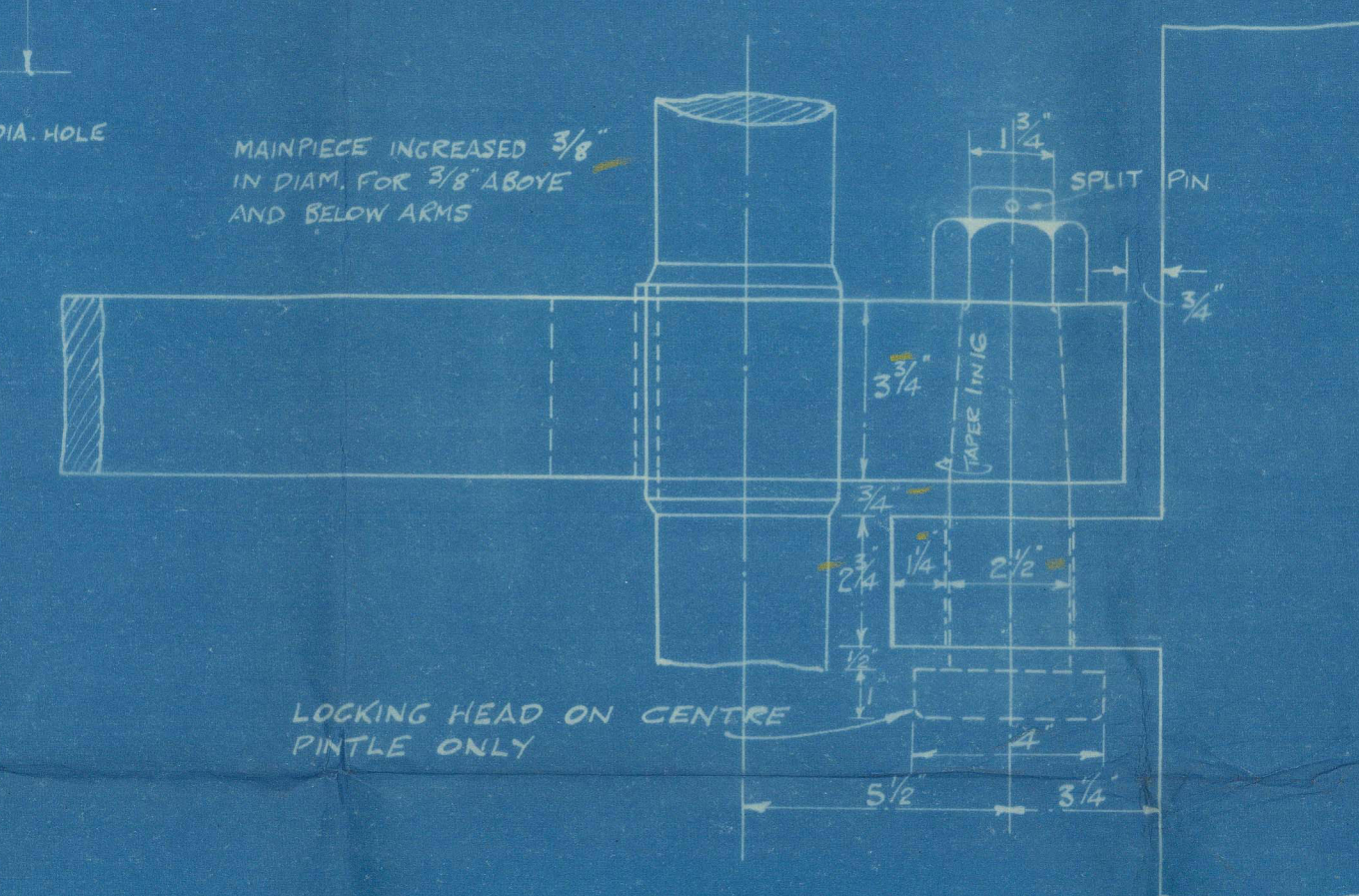


NOTE:-

CARE TO BE TAKEN THAT RUDDER AND
PROPELLER POSTS ARE AT 90° TO BASE
DIMENSIONS TO BE ACCURATELY WORKED TO



DETAIL OF QUADRANT
SCALE 1/2" = 1FOOT



DETAIL OF GUDGEONS AND PINTLES

SCALE 3" = 1FOOT

Double S.B.G's 39

Stern frame, Rudder etc.

S. S. SOUTHCATE.

NEWCASTLE ON TYNE.

Report No. 79960.

N/N

CISTERNA



© 2021

Lloyd's Register
Foundation

015163 - 015171 - 0235