

DRAWING N° 2

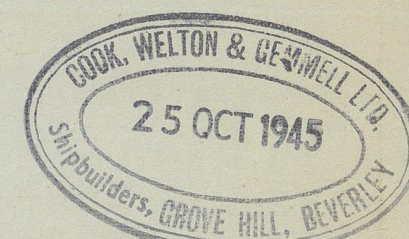
MIDSHIP SECTION

YARD N° 766

DIMENSIONS 133'6" B.P. x 25'6" B.M.^{LD} x 13'6" D.M.^{LD}

CLASS 100 A.I. DIESEL TRAWLER

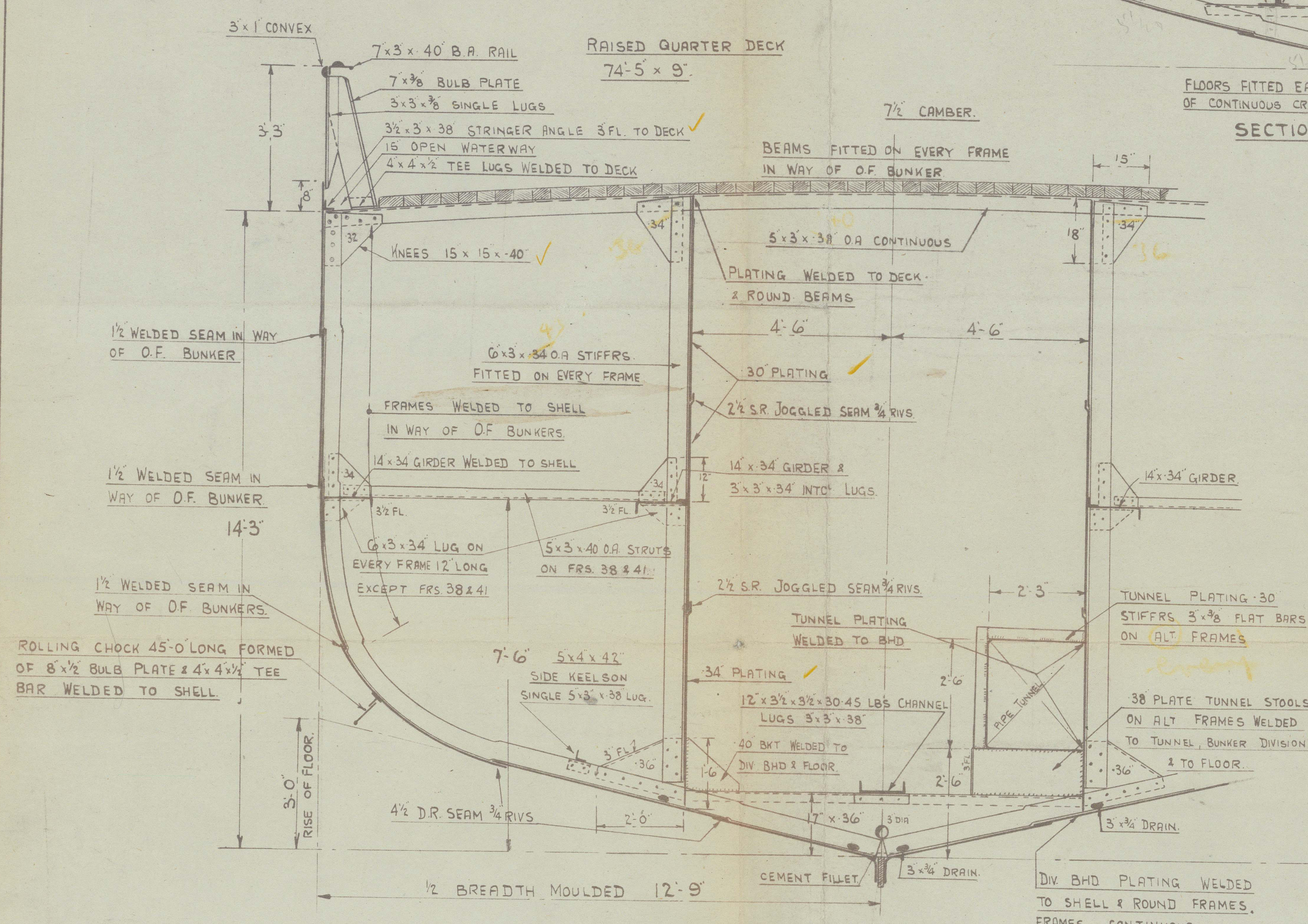
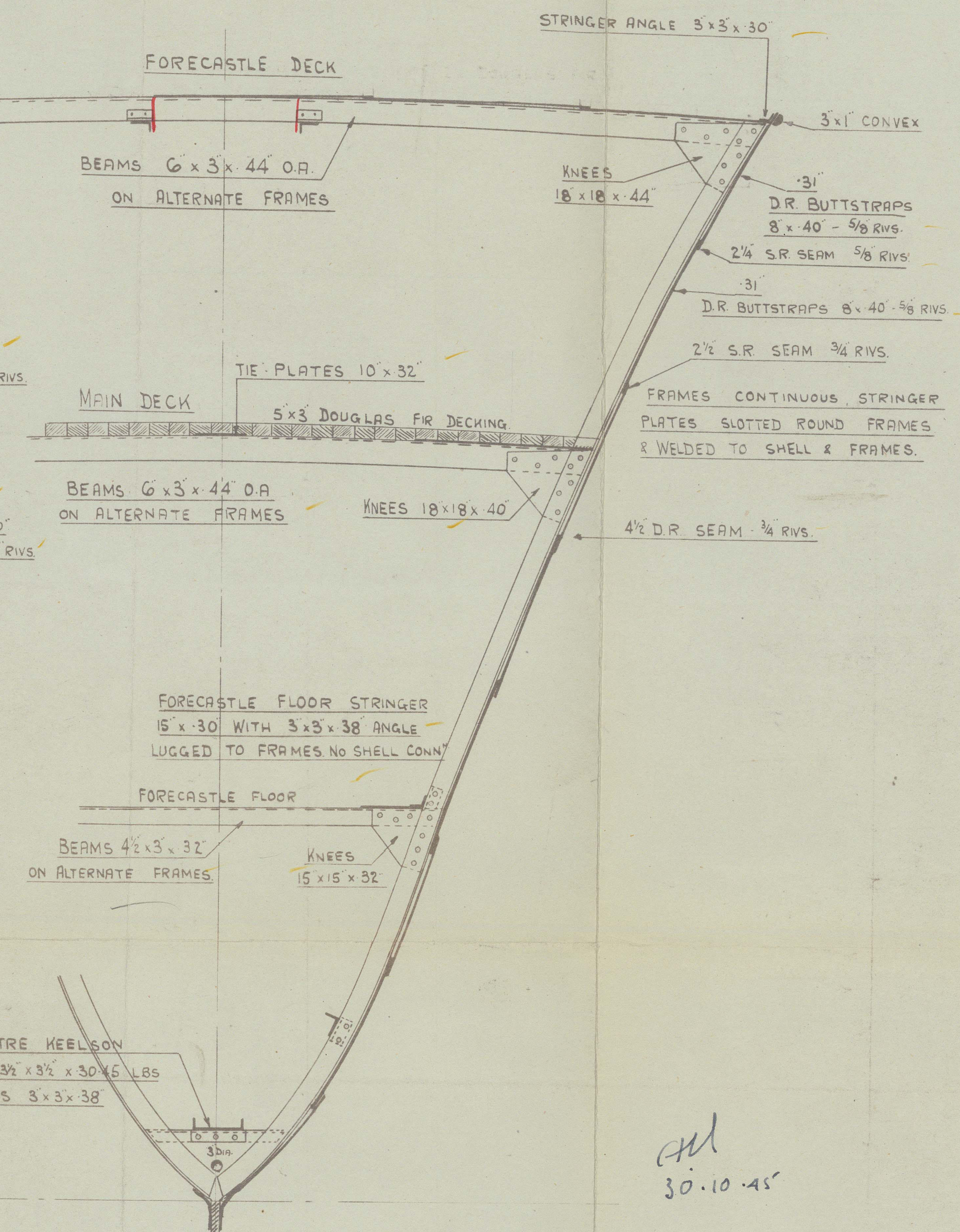
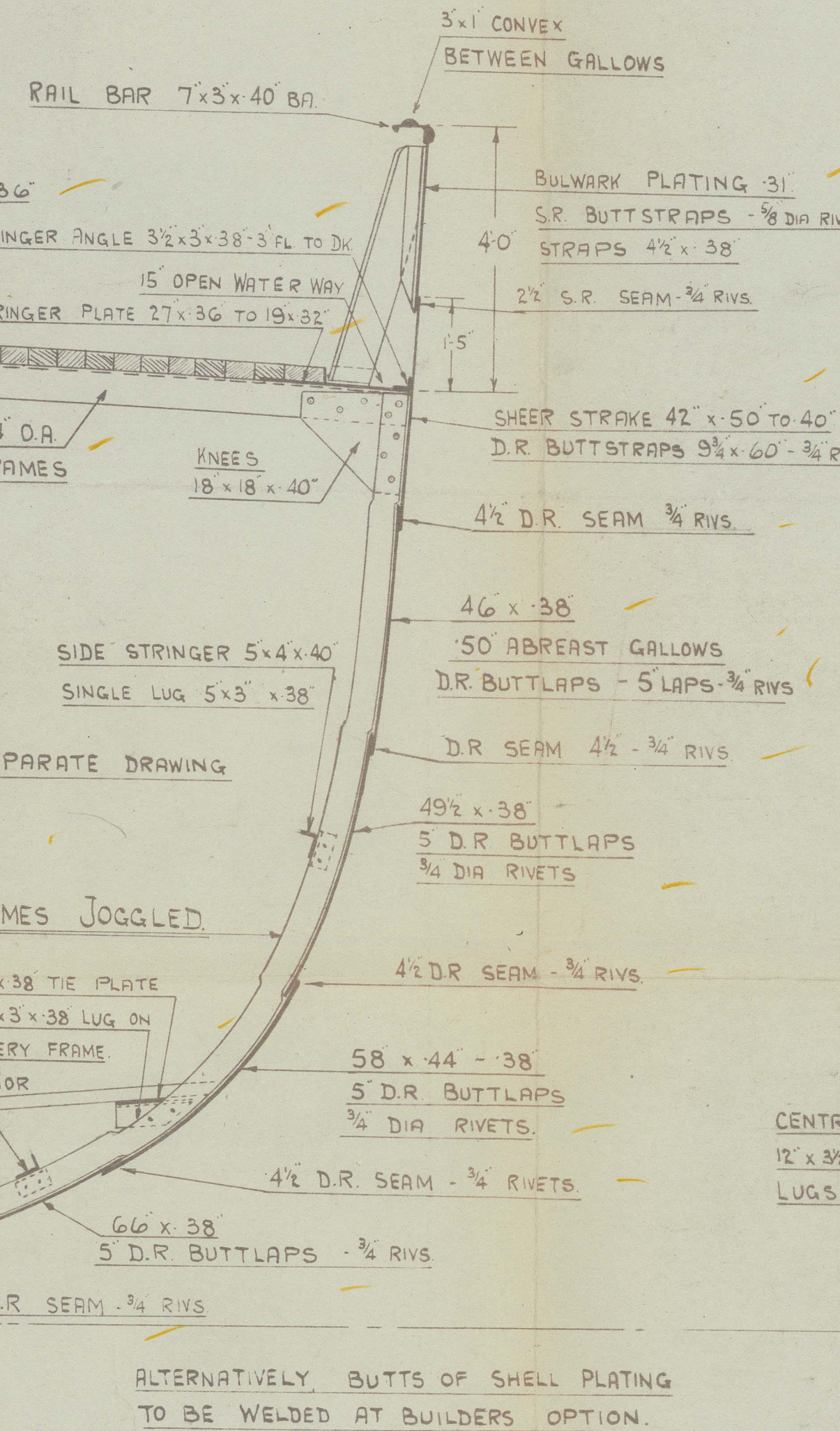
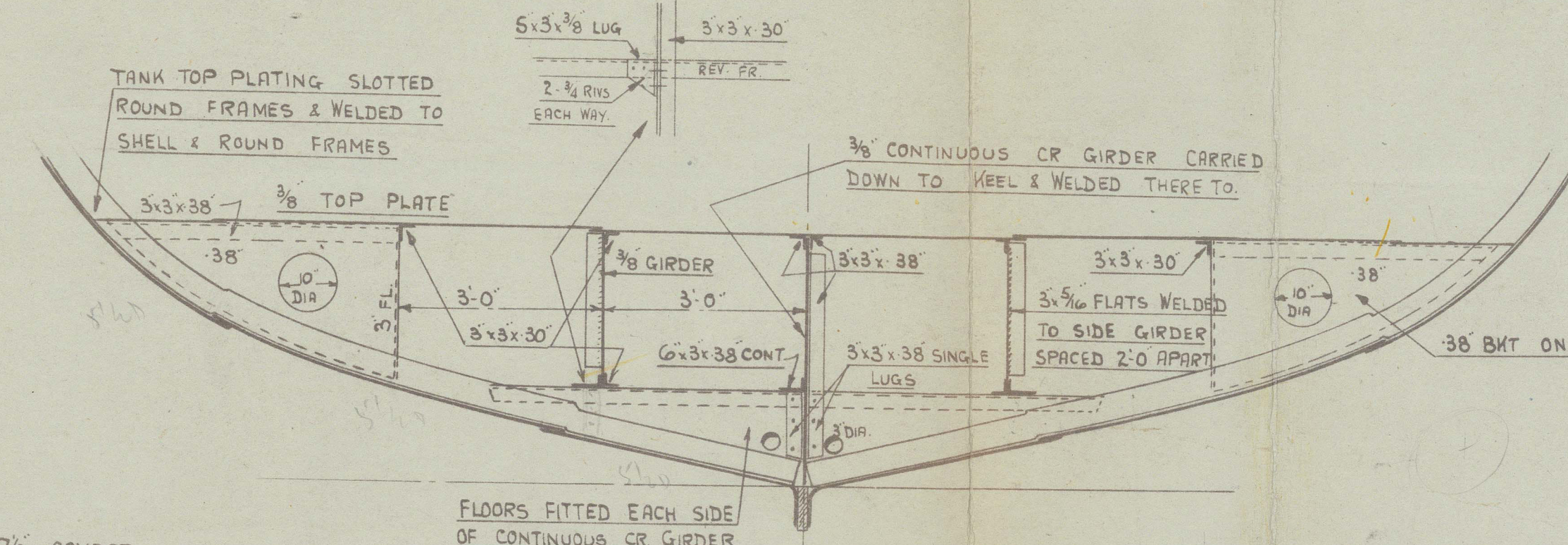
SCALE 1/2" = 1 FOOT.



LLOYDS NUMERALS	
LxD	1802.25
D	13.50
L x (B+D)	5206.50
B+D	39.00
L/D	9.88
L/B	5.23
d	12.08

EQUIPMENT	
1 STOCKLESS ANCHOR	8 CWTs
1 RODGERS	3/4" Ex STOCK
120 FMS OF 1 1/2" STUD LINK CABLE	
60 5 1/2" HAWSER	ALTERNATIVELY 2-60 FM LENGTHS OF
60 5" WARP	4 COMBINATION WIRE WITH A BREAKING STRENGTH OF NOT LESS THAN 83 TONS.

WELDING TO LLOYDS REQUIREMENTS
DETAILS OF SHELL WELDING TO BE SUBMITTED
ON SHELL EXPANSION PLAN.



COOK WELTON & GEMMELL LTD
SHIPBUILDERS
BEVERLEY

SECTION IN WAY OF RAISED Q'TR DECK
THROUGH OIL FUEL BUNKERS
LOOKING AFT.

SECTION IN WAY OF MAIN DECK
THROUGH FISHROOM

SECTION IN WAY OF FORECASTLE DECK

30.10.45



N^o ST. GEORGESⁿ

Office

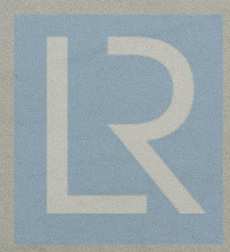
DISCLASS SECTION
N^o S/R.

(10)

COOK. WELTON & GEMMELL
YARD N^o 766

MIDSHIP SECTION
EX.
"THORINA" ❁

015134-015154-0177



© 2021
Lloyd's Register
Foundation