

# CARGO MOTOR SHIP

CLASS & SURVEY :-  
LLOYDS 100A1 LONGITUDINAL FRAMING AT BOTTOM L.M.C  
NAVY AREA OCEAN GOING

## PRINCIPAL DIMENSIONS:-

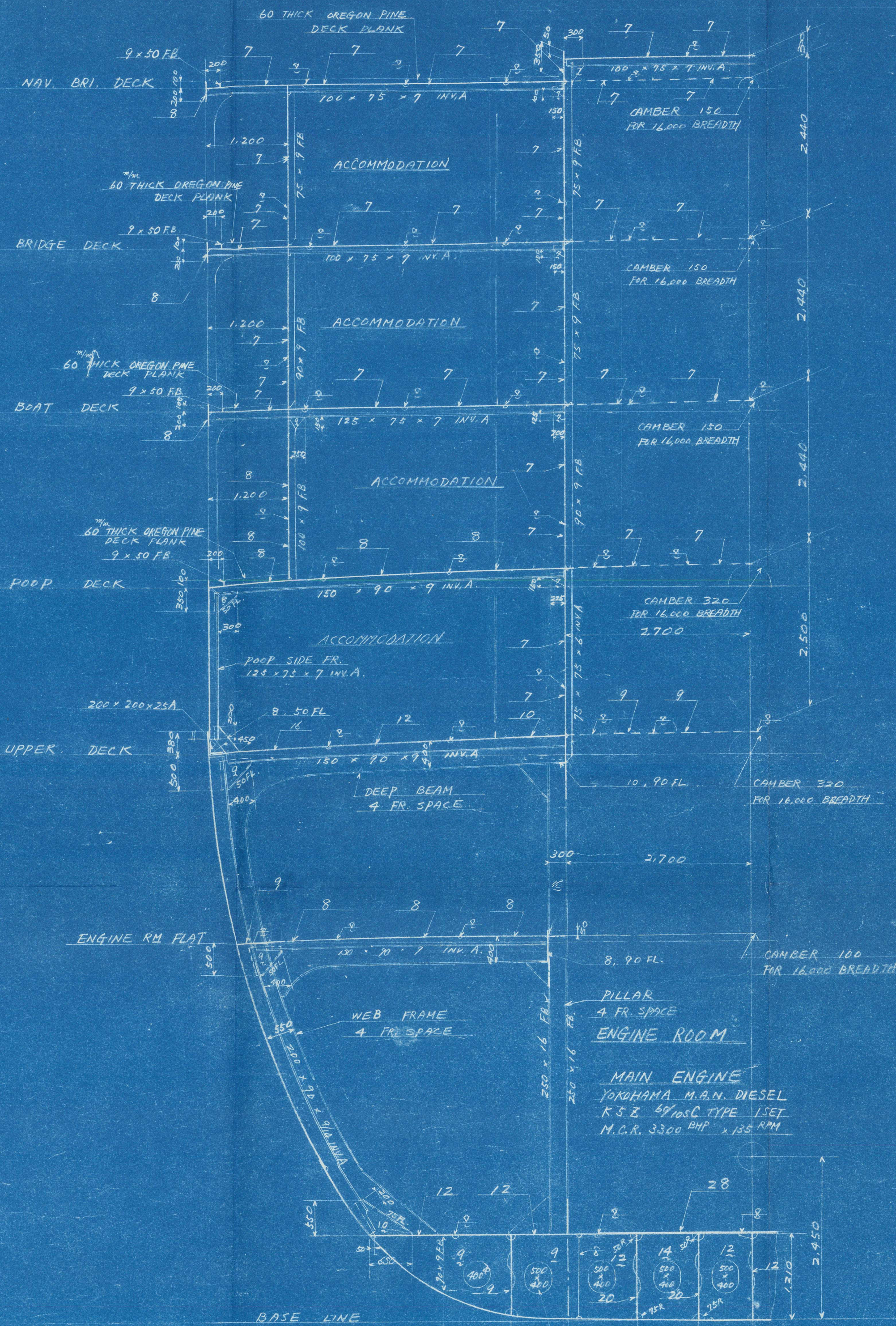
LENGTH B.P.	100'00	30.48
BREADTH MLD	16'00	4.88
DEPTH MLD	8'00	2.44
DESIGNED DRAFT (ABOVE TOP OF KEEL)	6'00	1.83
SCANTLING DRAFT (PE)	6'50	2.03
LENGTH FOR SCANTLING	100'67	30.63

## EQUIPMENT NUMBER:-

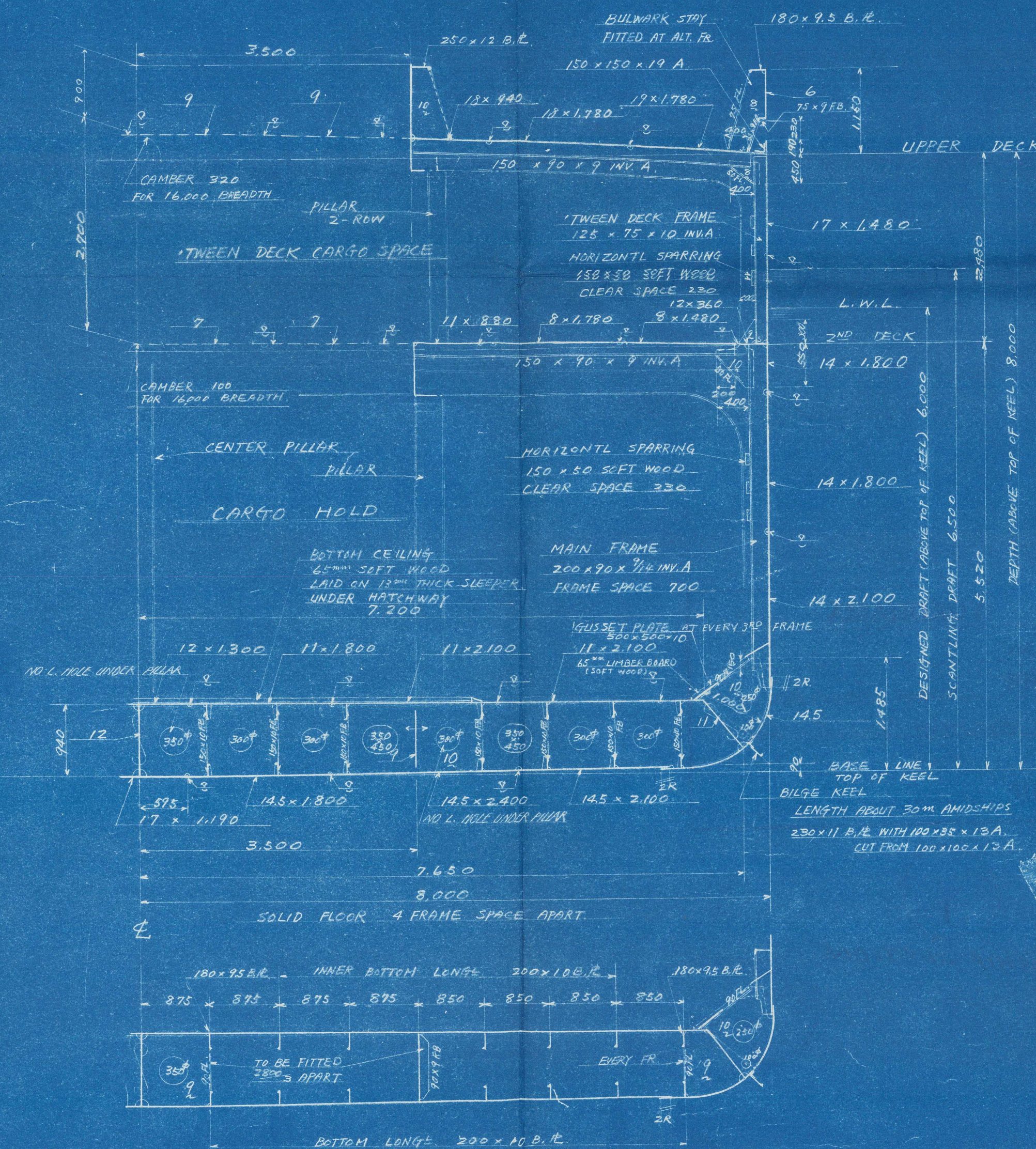
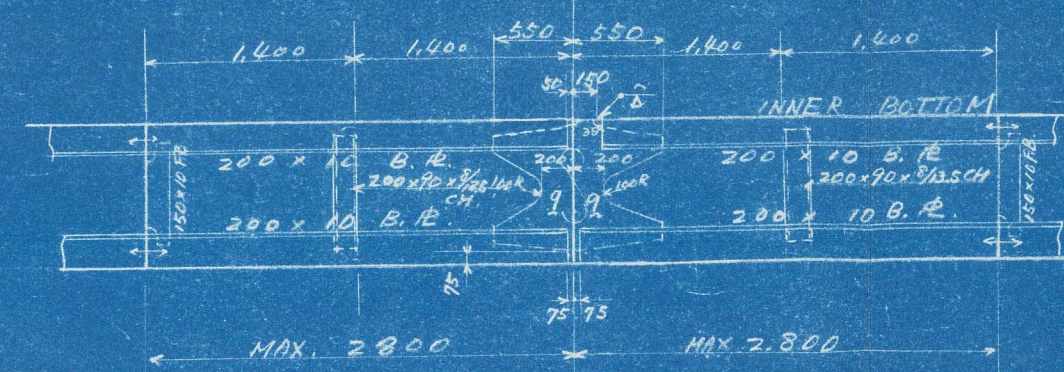
1. (S.D.) - 0.85 - L. (C.D.)	10.67 - (C.D.) - 0.85 - 10.67 - (C.D.) - 0.85 - 10.67	
ROCKCASTLE	0.85 - (C.D.) - 0.85	16.63
POOP	0.85 - (C.D.) - 0.85	60.36
DECK HOUSE ABOVE POOP DECK	0.75 - (C.D.) - 0.75	47.57
DECK	0.75 - (C.D.) - 0.75	33.16
BRIDGE DECK	0.75 - (C.D.) - 0.75	34.13
NAVY BRI. DECK	0.75 - (C.D.) - 0.75	1.33
TOTAL	0.85 - (C.D.) - 0.85	17.91

## EQUIPMENT:- W

BOW ANCHORS (STOCKLESS)	3 - 2.540" EACH
CHAIN CABLE (ELECTRICALLY WELDED SPECIAL STEEL)	1 - 4.75" x 46"
TOW LINE	F.S. WIRE (6" x 24") 1 - 200" x 34" (85.53.6 K.TONS)
MOORING ROPES	F.S. WIRE (6" x 24") 4 - 185" x 22" (83.22.4 K.TONS)
X SPECIAL STEEL IN ACCORDANCE WITH TABLE 53 NOTE 4 AND ALSO WITH P1701 FOR QUALITY AND MATERIAL TEST	



## ASSEMBLY JOINT OF LONGITUDINALS



## BIBLIOGRAPHY

DESIGNED IN TOKYO  
(FEB. 19 1960)  
DESIGN NOTED BY L.A.S. REQUIRE-  
MENT (MAY 3, 1960)

A-264  
GUNUNG TAMBORA

MIDSHIP  
SECTION

(AS BUILT)

SCALE 1/50

HAKODATE DOCK CO. LTD.  
TOKYO, JAPAN

TECHNICAL DEPARTMENT

TECHNICAL MANAG. K. Kouchigawa

CHIEF OF SECT. H. Kouchigawa

CHECKED BY H. Kouchigawa

CHECKED BY H. Kouchigawa

DRAWN BY H. Kouchigawa

DATE Feb 27 1960

DESIGN NO. H-17

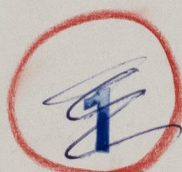
DRAWING NO. H-17



RECORDS DEPT..  
LONDON.

3

PORT	YOKOHAMA
REPORT No.	3735
NAME OF SHIP	GUNUNG TAMBORA
BUILDER	HAKODATE DOCK CO., LTD
YARD No.	264
SISTER SHIP	GUNUNG GUNTUR "GUNUNG KERINCI"



MIDSHIP SECTION



Lloyd's Register  
Foundation

015028-016087-0143