

EQUIPMENT			
BOWER ANCHOR (STOCKLESS)	3	COLLECTIVE 6070 ^{1/2} "	LENGTH
STREAM ANCHOR	1	EX STOCK 510 "	
CHAIN CABLE	1	48 #	450' M
STEEL WIRE ROPE FOR STREAM ANCHOR	1	32 #	150 "
HAWSE	1	32 #	165 "
WARPS	2	20 # (W.R.)	165 "
WARPS	2	50 # (MANIKIA)	165 "

KEEL & SHELL PLATING				
FLAT PLATE KEEL	1/2" L	ENDS	REMARKS	END CONNECTION
BOTTOM PLATE	1600 x 16	14	" 4 FROM END	3R
SIDE PLATE	12	10		3 ~ 2R
SHEER STRAKE	1400 x 16	10	25 AT BRIDGE END	4 ~ 2R
STRAKE BELOW SHEER STRAKE	14	10		3 ~ 2R
SOLE SIDE PLATE		9		1R
BRIDGE "	12			3R
POOP "		8		1R
BOSS PL & KEEL PL OF STERN FRAME	14			

FORGING & CASTING	
STEM	16-10 (U FORM FURNACED PL)
STERN FRAME	CAST STEEL

BILGE KEEL	
LENGTH	ABOUT 29' 00" MIDSHIP
DEPTH	30.0
PLATE	235 x 12
FLAT BAR	80 x 12 F.B.
CONNECTING ANGLE	130 x 14 F.B.

DOUBLE BOTTOM	
PLATE	REMARKS
KEEL ANGLE	870 x 11-9
TOP	75 x 75 x 9
WIRTS	90 x 10 F.B.
PLATE	8
BOTTOM ANGLE	75 x 75 x 9
TOP	75 x 75 x 9
WIRTS	90 x 10 F.B.
PLATE	8
FRAME	75 x 75 x 9
REV. FRAME	75 x 75 x 9
STIFFENERS	75 x 9 F.B.
BRG PLATE	8 - 50 F.B.
FRAME	150 x 75 x 12
REV. FRAME	150 x 75 x 12
STRUT	150 x 90 x 12
PLATE	11
BOUNDARY ANG	75 x 75 x 12
STIFFENERS	75 x 12 F.B.
M. LINE STRAKE	1400 x 11-9
OTHER	9 x 8
MARGINE PL	11
ANG	90 x 90 x 13

NOTE 1. FORWARD OF 1/2 L TO COLL BND.
INTERCOSTAL SIDE GIRDERS ARE FITTED 1" 800 APART
HAFT HEIGHT GIRDERS ARE FITTED BETWEEN SIDE GIRDERS

2. SOLID FLOORS ARE FITTED ON EVERY FRAME IN ENGINE SPACE
UNDER BOILER BEARER & FORWARD 6" 8" ELSEWHERE FITTED ON
EVERY FOUR OR THREE FRAMES

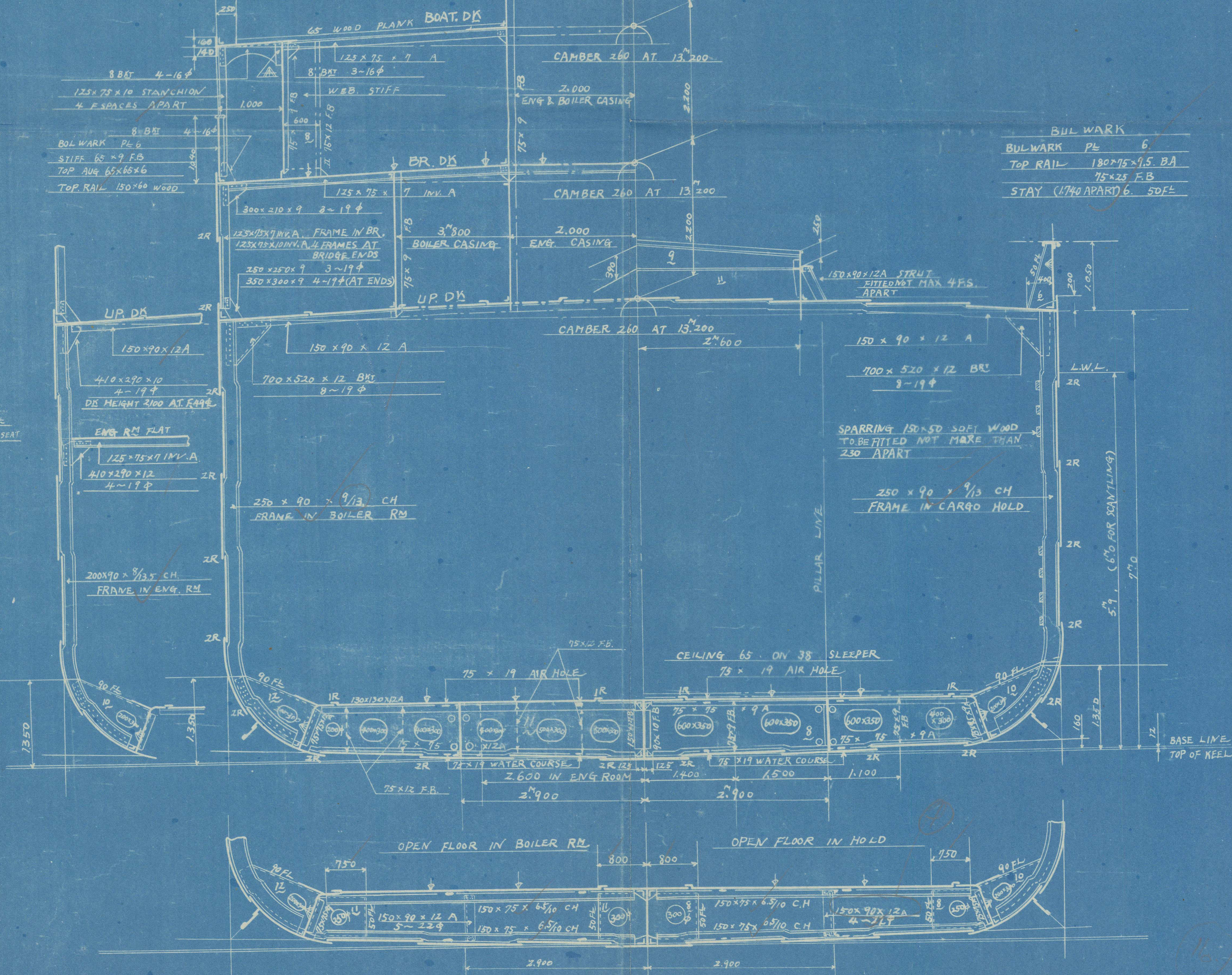
3. ADDITIONAL SIDE GIRDERS ARE FITTED IN ENGINE SPACE

TANK SIDE BMT	
TANK SIDE BMT	REMARKS
NO. 10 - 90 F.B.	10 - 90 F.B.
NO. 14 - 10 #	14 - 10 #
NO. 14 - 10 #	14 - 10 #
NO. 14 - 10 #	14 - 10 #
NO. 14 - 10 #	14 - 10 #
NO. 14 - 10 #	14 - 10 #
NO. 14 - 10 #	14 - 10 #
NO. 14 - 10 #	14 - 10 #
NO. 14 - 10 #	14 - 10 #
NO. 14 - 10 #	14 - 10 #

CARGO BOAT (SINGLE SCREW)	
CLASS	CLASS 100A1
NAVIGATION AREA	NAVIGATION AREA

PRINCIPAL DIMENSION	
LENGTH OVER ALL	92' 5"
LENGTH (P.P.)	87' 0"
BREADTH (MLD)	13' 2"
DEPTH	7' 0"
LOADED DRAFT	6' 9" (6' 0" FOR SCANTLING)

EQUIPMENT NUMBER	
2 x (B+D)	870 x 13.2 x 702
F.CLE DECK	870 x 13.2 x 702
BRIDGE DECK	870 x 13.2 x 702
POOP DECK	870 x 13.2 x 702
BRIDGE DECK HOUSE	870 x 13.2 x 702
BOAT	870 x 13.2 x 702
NAV BRIDGE HOUSE	870 x 13.2 x 702



HATCH COAMING & WEB	
HATCH	COAMING & WEB
NO. 1 HATCH	760 x 11
NO. 2 HATCH	760 x 11
NO. 3 HATCH	760 x 11
NO. 4 HATCH	760 x 11
REMARKS	

BRIDGE DECK	
STRINGER PLATE	1400 x 9
ANGLE	90 x 90 x 10
DECK PLATE	8
DECK WITHIN OPENINGS	7
WOOD PLANK (WEATHER PART)	65
GUTTER WATER W. AVG	53 x 9 F.B.

UPPER DECK	
STRINGER PLATE	1400 x 14
ANGLE	100 x 100 x 15
DECK PLATE	12
DECK WITHIN OPENINGS	8

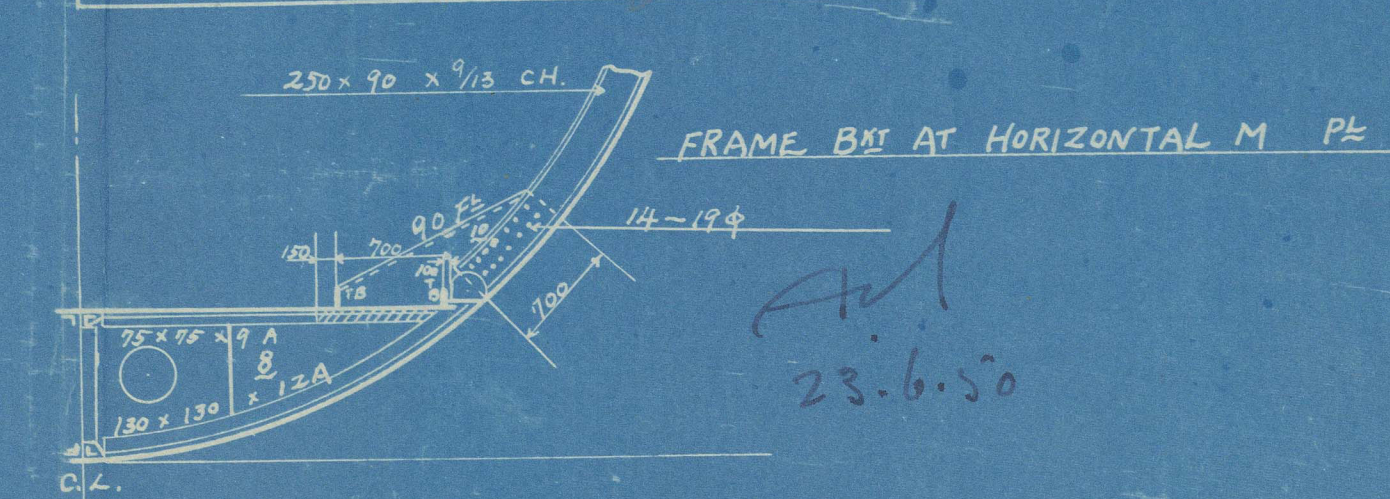
POOP & F.CLE DECK	
STRINGER PLATE	4-7
ANGLE	75 x 75 x 9
DECK PLATE	7 (9 UNDER WINDLASS)

OTHER DECKS	
STRINGER PLATE	1300 x 6
ANGLE	65 x 65 x 6
CURTAIN	300 x 7
GUTTER W. WAY AVG	55 x 9
WOOD PLANK	65

DECK HOUSE	
COAMING ANGLE	125 x 8 F.B.
HOUSE PLATE	6
TOP ANGLE	65 x 65 x 6
STIFFENER	75 x 9 F.B.
STIFF SPACE	800 ~ 660

ENG. & BOILER CASING	
COAMING PLATE	UPP DECK ~ BRI DECK
ANGLE	BRI DECK ~ BOAT DECK
CASING PLATE	ABOVE BOAT DECK
STIFFENER	
STIFF SPACE	

BUNKER AND SCREEN BMT	
COAMING PLATE	BUNKER BMT
BULKHEAD	RESERVE BUNKER BMT
BOUNDARY ANGLE	SCREEN BMT
STIFFENER	
STIFF SPACE	



いくは丸 光徳丸
S.S. IKUSHIMA MARU
中央横截面圖
MIDSHIP SECTION
23.6.50
24-1-24

いくしま 光徳丸

S.S. "IKUSHIMA MARU"

中央横
MIDSHIP SECTION
截面圖

尺度

1/50

重要
寸法

870×132×70



松田 下田
松田 下田

24-1-24

RECORDS DEPT.
LONDON

2

To London



© 2021

Lloyd's Register
Foundation