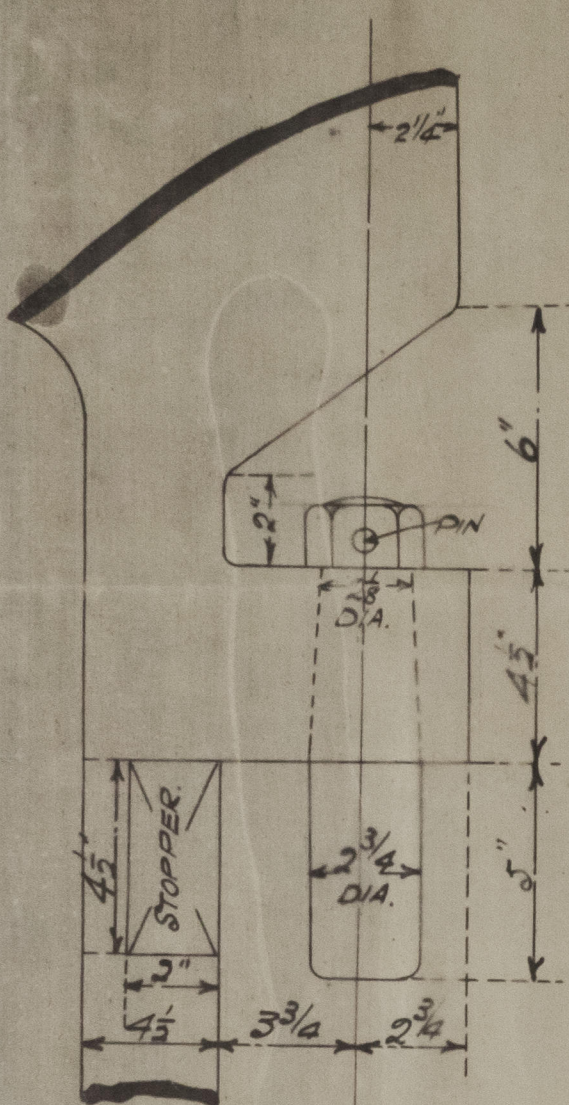


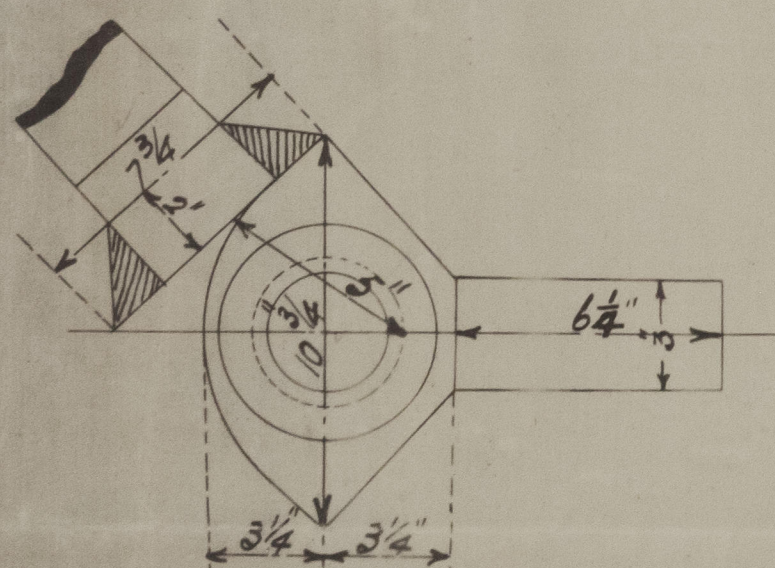
SCALE $\frac{3}{4}" = 1 \text{ FOOT}$

4.6.15.

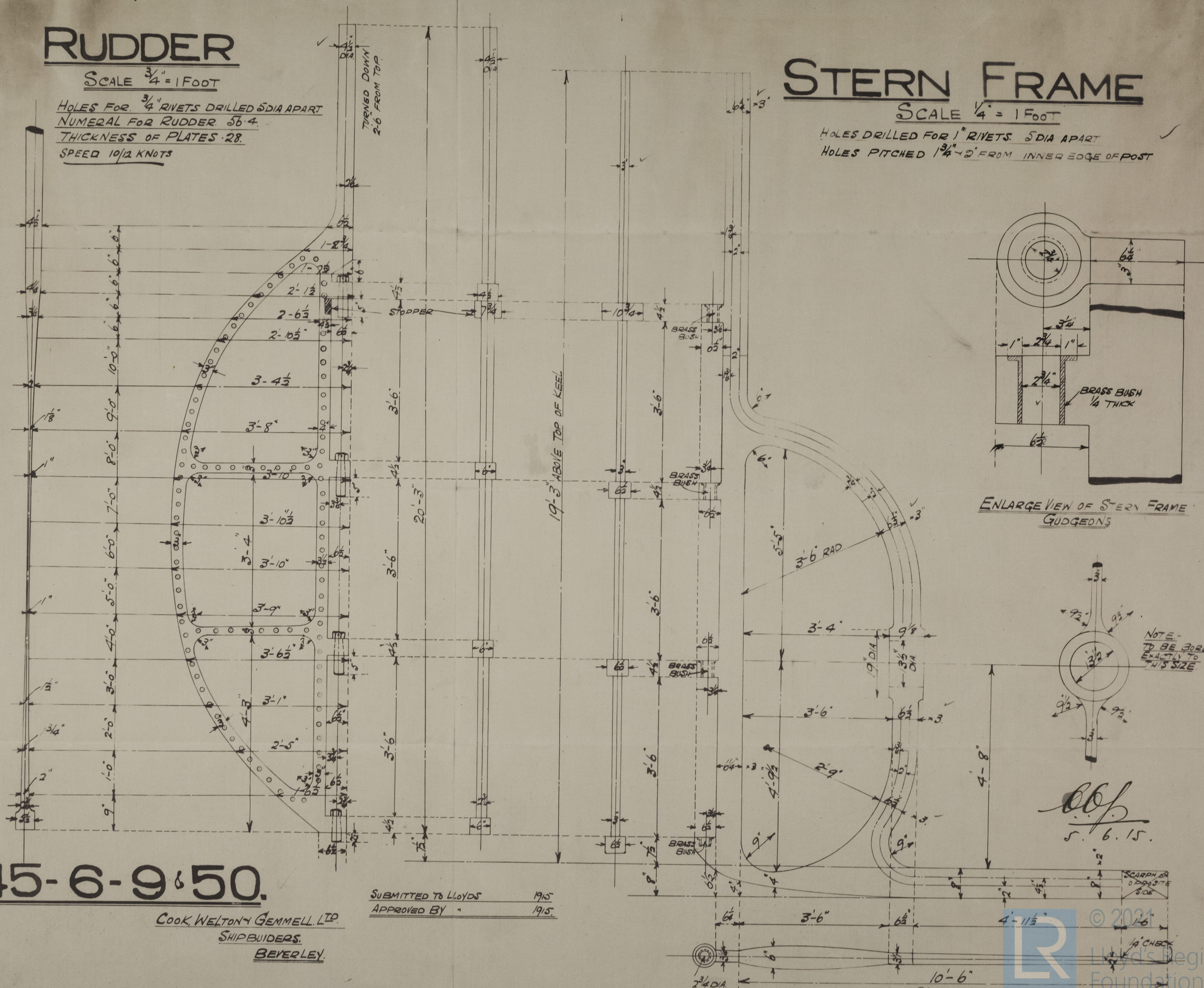


ENLARGED VIEW OF PINTLES.

NOTE:- CENTRES OF PINTLES ARE TO BE KEPT IN LINE WITH CENTRES OF HOLES IN STERN POST



ENLARGED VIEW OF RUDDER STOPPER
RUDDER TO HEEL OVER TO AN ANGLE OF 45°



N^{os} 345-6-9 & 50.

COOK, WELTON & GEMMELL, LTD.
SHIPBUILDERS.
BEVERLEY.

SUBMITTED TO LLOYDS 19/5
APPROVED BY " 19/5

014935-014945-0283

Nos 345-6-9-50

COOK WELTON & GEMMELL

RUDDER & STERN
FRAMES



* S. Seddon - Hull Rpt No 29618
S. Seddon Do. 29658
S. Kastoria Do. 29450
S. Moravia No. 29849



© 2021

Lloyd's Register
Foundation

014935-014945-0283