

STERN FRAME & RUDDER. FORGED IRON.

SURVEY LLOYDS

SCALE:- $\frac{1}{2}" = 1 \text{ FOOT.}$

DIMENSIONS.

LENGTH B.P. 297'-0"

BREADTH MLD......43'-9"

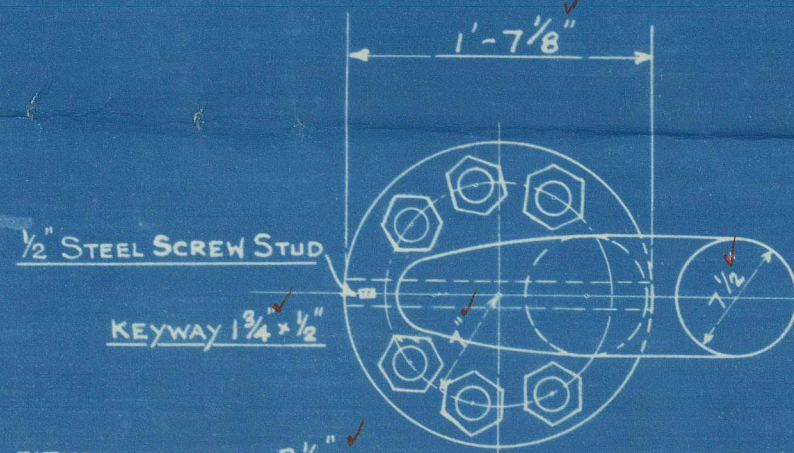
DEPTH MLD. 23' - 6"

NOTE:- FIGURED DIMENSIONS ONLY TO BE WORKED TO.

NUMERALS

AREA OF RUDDER =	94.23	"A"
C.G. FROM CR. OF PINTLES =	2.83	"D"
$A \times D$	(94.23×2.83)	= 267.0
SPEED NOT EXCEEDING 10 KNOTS.		

A-D not to exceed 268
Rankings ~~depend~~ on this basis.

$$1'' = 1 \text{ FT}$$


G STEEL FITTED BOLTS 2 1/8" DIA
MEASURED AT COUPLING SURFACE.
CHECK PINS TO BE FITTED TO
ALL BOLTS.
FAYING SURFACE OF COUPLING
TO BE MACHINED.

NOTE:- DIMENSIONS OF ARMS
GIVEN FROM CENTRE OF PINTLES
TO TIP OF ARMS.

NOTE:- DIAMETER OF MAINPIECE
INCREASED $\frac{3}{4}$ " IN WAY OF
RUDDER ARMS. ✓

DRILLING.

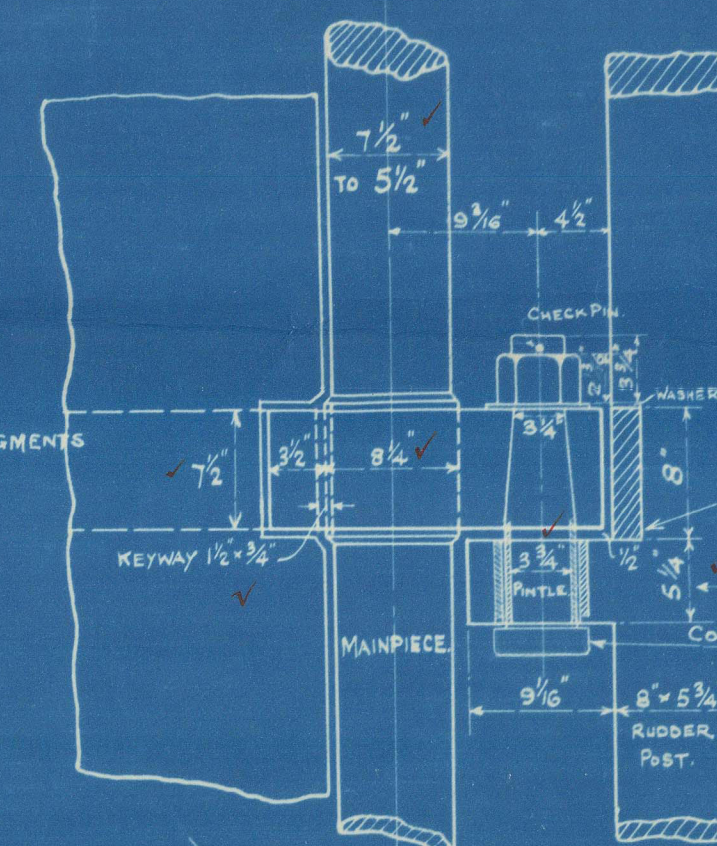
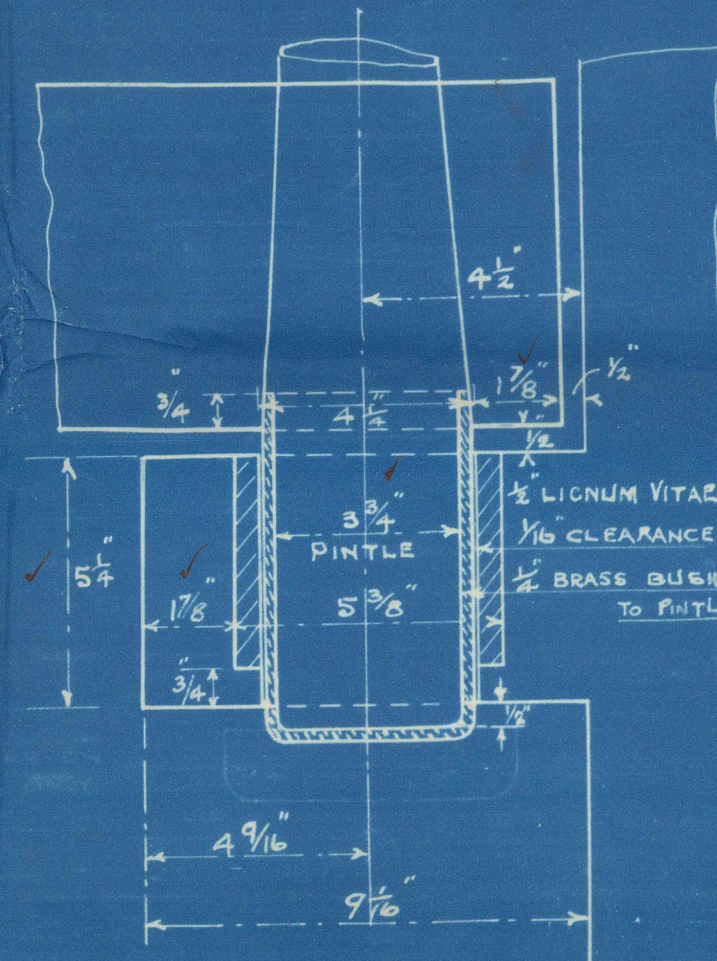
RUDDER (SINGLE PLATE) $1\frac{3}{16}$ " HOLES 5" APART C TO C.

STERN FRAME $1\frac{1}{6}$ " HOLES 5" APART C. TO C. IN EACH ROW.

DETAIL OF BUSHES ON PINTLES.
SCALE:- 3" = 1 FOOT.

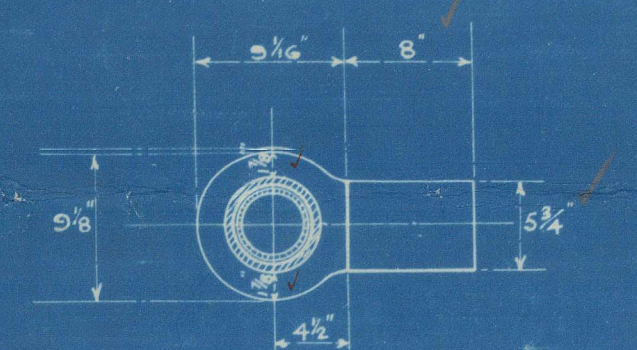
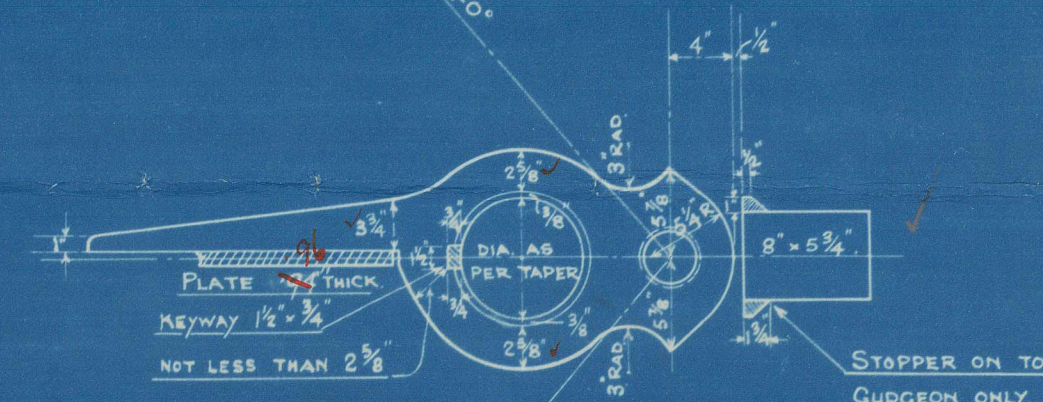
DETAILS OF PINTLES & GUDGEONS

SCALE:- 1" = 1 FOOT



NOTE :- CENTRE LINE OF PINTLES TO BE PERPENDICULAR TO BASE & $1\frac{1}{2}"$ PARALLEL TO AFTER SIDE OF RUDDER POST OF STERN FRAME.
CENTRE LINE OF MAINPIECE TO BE $9\frac{3}{8}"$ PARALLEL TO CENTRE LINE OF PINTLES.
ALL PINTLES TO BE OF STEEL, BRASS BUSHED. TO BE MADE & EFFICIENTLY FITTED AS PER DRAWING.

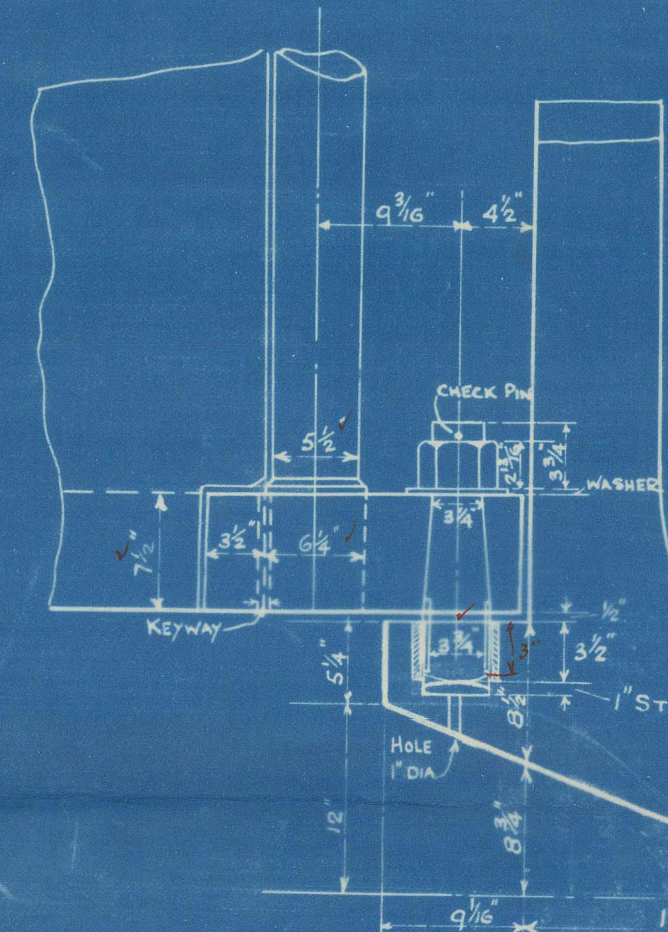
ALL HOLES MARKED TO BE DRILLED BY CONTRACTOR



ORDINARY GUDGEON "B.B."



ROUGH THICKNESS. (FINISHED THICKNESS
NOT TO BE LESS THAN 3 1/2")



BOTTOM GUDCEON

Rutland J. B. Co


No 120 - 121

Stemframe &

Rudder.

"Uckhaven"

Lh. 16300.

Algarrobo 
ex
Uckbridge

Lh 16536.



© 2021

014899 - 014911 - 0285

Lloyd's Register
Foundation