

DRWG. N° 2

MIDSHIP SECTION.

YARD N°s 763-4-5-7 AND 8.

DIMENSIONS :- LENGTH 163'-8" B.P. x 27'-6" B.MLD. x 15'-3" D.MLD.

CLASS 100 A.I. STEAM TRAWLER.

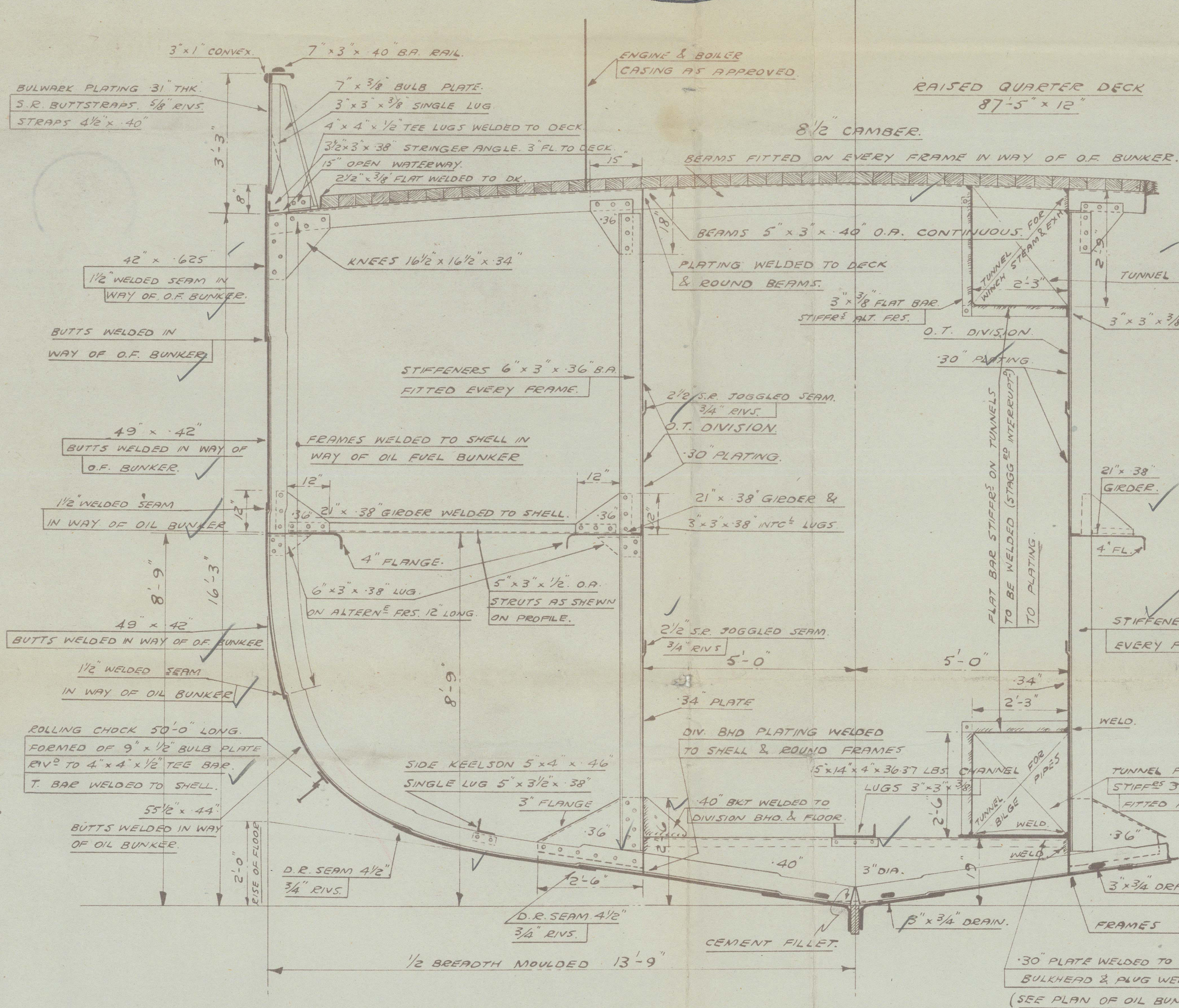
SCALE 1/2" = 1 FOOT.



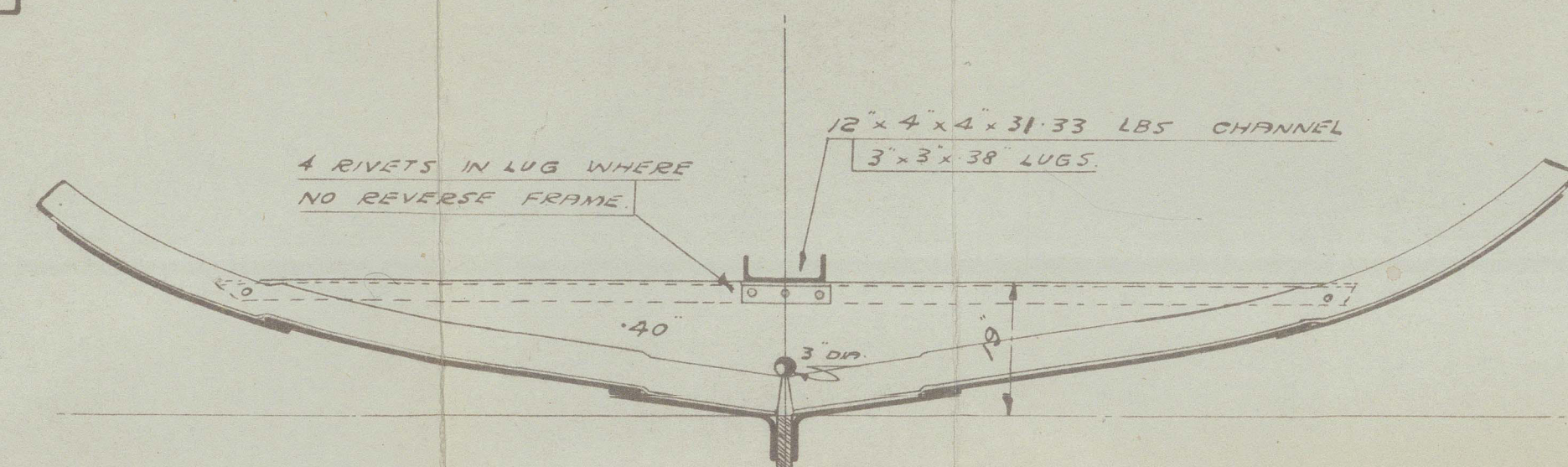
LLOYD'S NUMERALS.	
L x D	2495.815
D	15.25
L x (B+D)	6995.465
B+D	42.75
L/D	10.72
L/B	5.94
a	13.67

WELDING TO LLOYD'S REQUIREMENTS.
DETAILS OF SHELL WELDING TO BE SUBMITTED
ON SHELL EXPANSION PLAN.

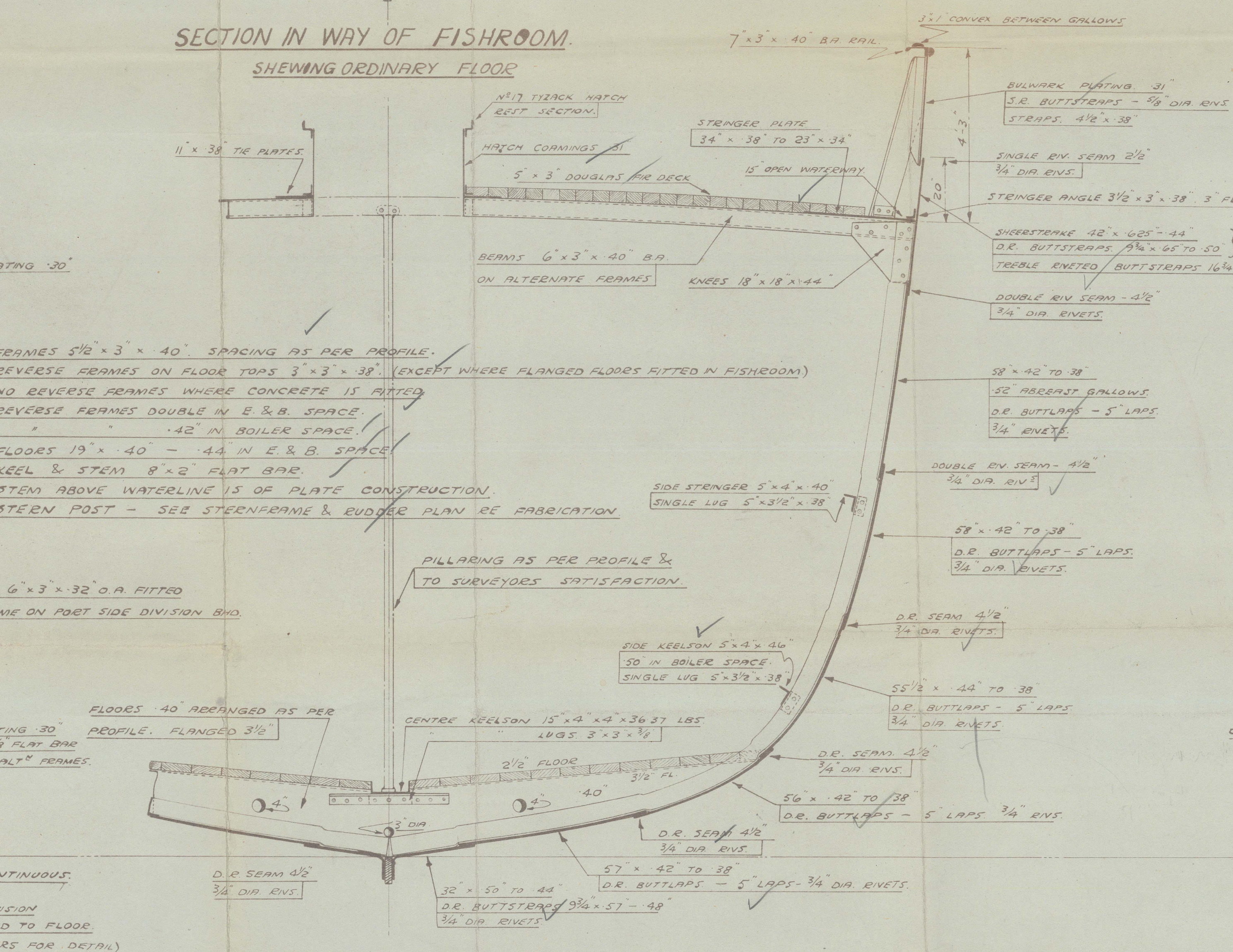
EQUIPMENT.	
1 STOCKLESS ANCHOR	10 1/4 CNFS. ✓
1 " "	9 3/4 " ✓
1 RODGERS ANCHOR	4 " (EX STOCK) ✓
150 FATHOMS 1 1/4" STUD LINK CABLE	
60 FATHOMS 6" HAWSER.	ALTERNATIVELY 60 FATHOMS
60 " 5 1/2" WARP	OFF 4 COMBINATION WIRE 2 OFF
	BREAKING STRENGTH NOT LESS THAN 8.3 TON



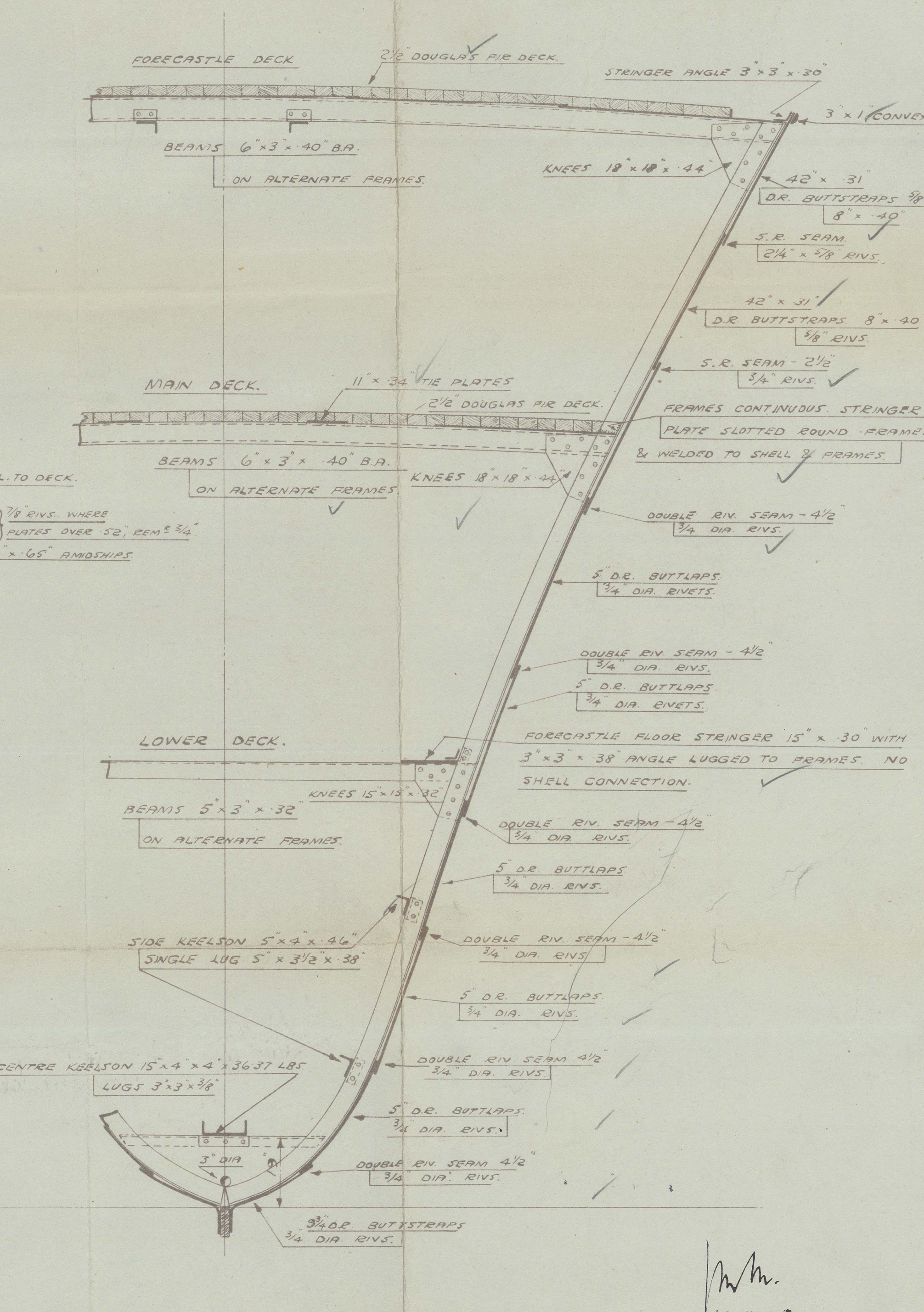
SECTION IN WAY OF RAISED QTR. DECK.
THROUGH OIL FUEL BUNKER.



SECTION IN WAY OF FISHROOM.
SHEWING ORDINARY FLOOR.



SECTION IN WAY OF MAIN DECK & FISHROOM.
SHEWING RAISED FLOOR TO CARRY FISHROOM CEILING.



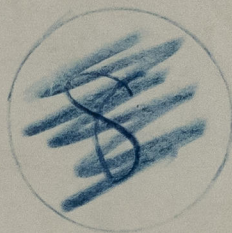
SECTION IN WAY OF FORECASTLE DECK.

DATE SUBMITTED TO LLOYD'S: _____
DATE APPROVED BY LLOYD'S: _____

LOOKING AFT.


COOK, WELTON & GEMMELL LTD.
SHIP BUILDERS
BEVERLEY.

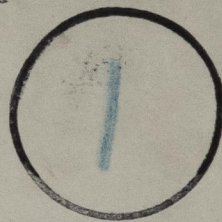
014887-014898-0289



014887-014898-0289

PLANE TRANSFERRED
TO LIVER VESSEL
"WOLVERHAMPTON WANDERERS"

"Anthony Hope
ex
St John" 



COOK, WELTON & GEMMELL LTD
YARD Nos. 703-4-5-7-8.

MIDSHIP SECTION



© 2021

Lloyd's Register
Foundation

014887-014898-0289