

# Lloyd's Register of Shipping.

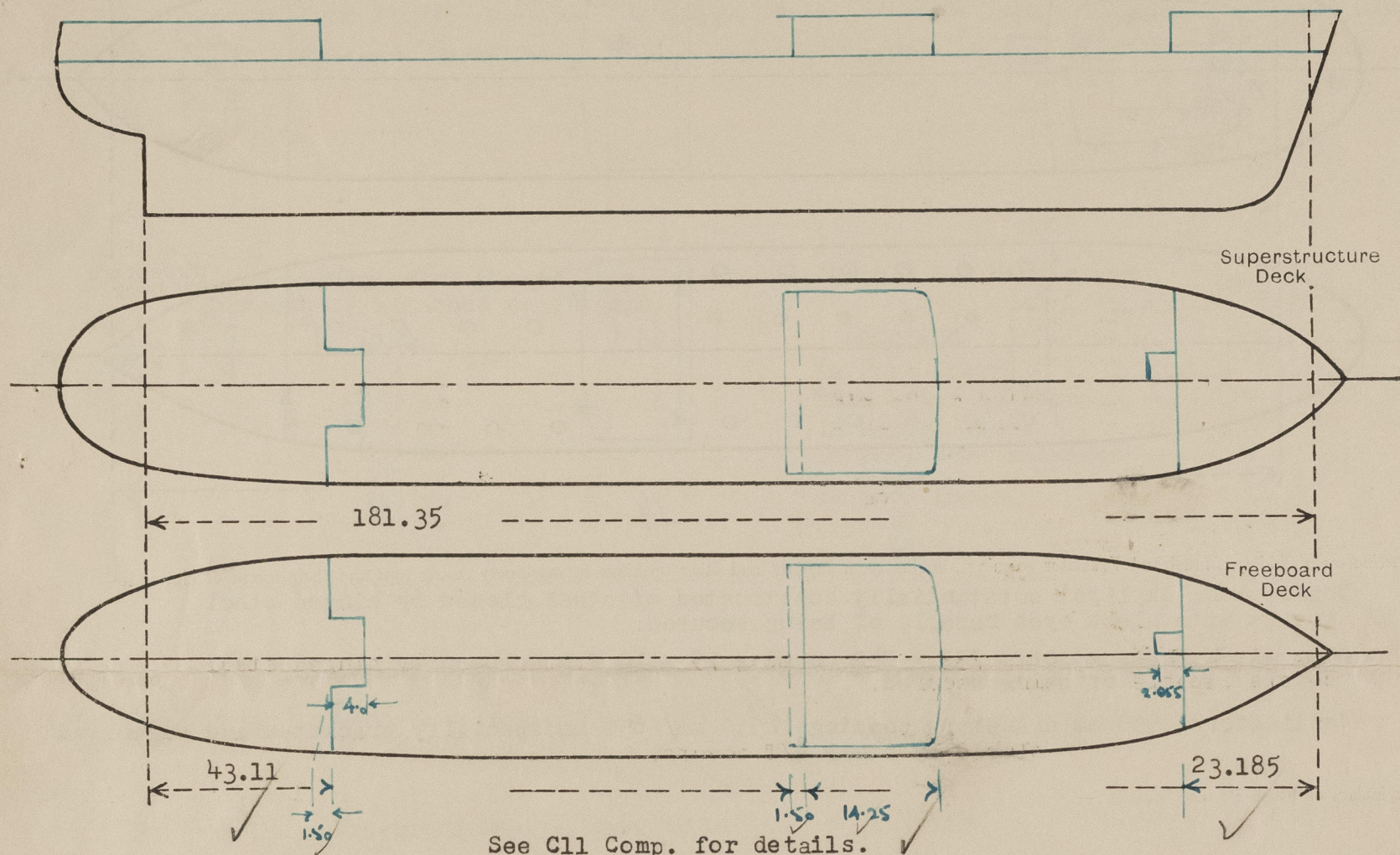
## SURVEYS FOR FREEBOARD.

(CONDITIONS OF ASSIGNMENT.)

F-210

Ship's Name PATRICIA Port of Survey KOBE  
Official Number \_\_\_\_\_ Surveyor's Signature Reginald S. S. S.  
Nationality and Port of Registry Panama Date of Survey 12-1952

Disposition and dimensions of superstructures, trunks, deckhouses and machinery casings to be inserted in the diagrams and tabular statement:—



Particulars of Superstructures, Trunks, Casings, Deckhouses.

	Coaming	Plating	Stiffeners	Spacing	End Attachments of Stiffeners	Size of Openings	Height of Sills	Height of Casings
Poop Bulkhead ... ..		11.5	300x90x <sup>10</sup> 15.5	760	Welded to deck at Both Ends	2@700x1490	615	2600
Raised Quarter Deck Bulkhead ...		7.5	100x75x7	760/770	Sniped at Both Ends	2@915x1550	400	2550
Bridge, After Bulkhead ... ..		11.5	300x90x <sup>9</sup> 13	760	Welded to deck at Both Ends	2@700x1565	385	2550
Bridge, Forward Bulkhead ... ..		7.5	100x75x7	760	Sniped at Both Ends	2@650x1565	385	2550
Forecastle Bulkhead ... ..						2@915x1550	400	2550
Trunk, Aft ... ..								
Trunk, Forward ... ..								
Exposed Machinery Casings on Freeboard or Raised Quarter Decks ...								
Exposed Machinery Casings on Superstructure Decks ... ..								
Machinery Casings within Superstructures not fitted with Class I Closing Appliances ... ..								
Deckhouses on Flush Deck Ships ...								

Particulars of Closing Appliances (state if capable of being manipulated from both sides).

Poop Bulkhead ... ..	✓ Hinged Steel W/T Doors manipulated from both sides.
Raised Quarter Deck Bulkhead ...	-
Bridge, After Bulkhead ... ..	✓ Steel plate covers secured by hook bolts from outside.
Bridge, Forward Bulkhead ... ..	✓ Hinged Steel W/T Doors manipulated from both sides. Hinged Steel W/T Doors manipulated from both sides.
Forecastle Bulkhead ... ..	✓ 65 m/m wood boards in Channels permanently attached to bulkhead.
Exposed Machinery Casings on Freeboard or Raised Quarter Decks ...	-
Exposed Machinery Casings on Superstructure Decks ... ..	-
Machinery Casings within Superstructures not fitted with Class I Closing Appliances ... ..	-
Deckhouses on Flush Deck Ships ...	-

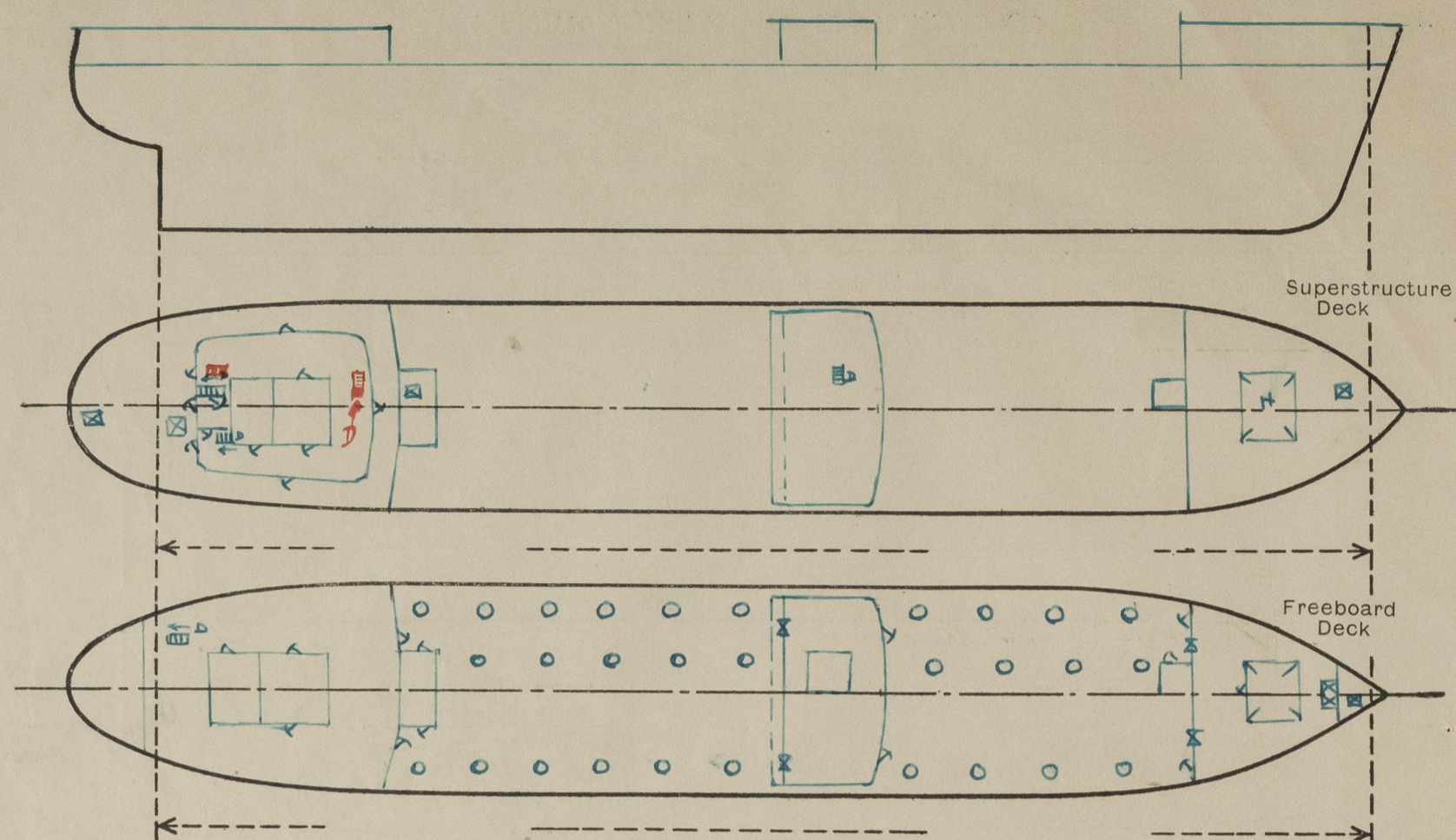


© 2021

Lloyd's Register Foundation

## PARTICULARS OF PROTECTION TO OPENINGS, ETC.

The following diagrams should be used to indicate the positions of cargo and coaling hatchways, gangway, cargo and coaling ports, ventilators, companionways, etc., which would affect the seaworthiness of the ship:—



Particulars of fiddle, funnel and ventilator coamings, engine room skylight and other openings in machinery casing tops and their means of closing:—

✓ Engine Room Skylight substantially constructed of steel closed by hinged steel covers with glass eyes capable of being secured.

✓ B.R. Air Hatches 2 off. 733 x 740 coaming 75 x 10 F.B. closed by hinged steel covers capable of being secured.

✓ Ventilators 900 mm diameter coamings 2550 mm/1650 mm specially bracketed and supported closed by steel W/T covers.

Particulars of Flush Bunker Scuttles:—

Particulars of Companionways:— Main Pump Room:— 11.5 mm plate stiffeners 300 x 90 x 10/155 Spaced 760 mm Door steel hinged W/T opening both sides - Sill 615 mm

Aux. Pump Room:— 7.5 mm plate stiffeners 100 x 75 x 7 Spaced 685 mm apart. Door steel hinged W/T opening both sides - Sill 615 mm

2 doors in Poop Deckhouse giving access to stairway below. wood doors sills 465 mm steel door in Bulwark giving access to stairway sill 235 mm

Particulars of Ventilators in exposed positions on freeboard and superstructure decks:—

✓ Fcile Deck:— Minimum Coaming 915 mm thickness 10 mm closed by Wood Plugs and Canvas Covers

✓ Poop Deck:— Minimum Coaming 830 mm thickness 10 mm closed by Wood Plugs and Canvas Covers

Particulars of Air Pipes in exposed positions on freeboard, raised quarter, or superstructure decks:—

✓ Poop Deck: 10 @ 2", 5 @ 4", 3 @ 3" - lip 460 mm above deck, closed by Steel Flap opening automatically under internal pressure.

1 @ 4", 8 @ 3", - lip 460 mm above deck, closed by wood plugs.

✓ Upper Deck: 4 @ 5" - lip 980 mm above deck, closed by Steel Flap opening automatically under internal pressure.

✓ Fcile Deck: 2-5" - lip 460 mm above deck, closed:— - do -  
2 @ 4", 1 @ 3" lip 460 mm above deck closed by wood plugs.

Particulars of Gangway Cargo and Coaling Ports:—

Particulars of Scuppers and Sanitary Discharge Pipes:—

✓ Scuppers from Poop:— led directly to E.R. bilge.

✓ Sanitary discharges from Poop Accommodation led through ships' side and fitted with N.R. Storm valves of cast steel.

✓ Sanitary discharges from Bridge Deckhouse accommodation led through ships side above freeboard deck and fitted with N.R. Storm valves of cast steel.

✓ Scuppers from Fcile:— led on to Upper Deck through after bulkhead + fitted with screwed brass plugs permanently attached.

Particulars of Side Scuttles:—

✓ All side scuttles of hinged type, of bronze, with M.C.I hinged and permanently attached deadlights.

Diam.	No.	Location
250 mm	1	In Fcile Shell
250 mm	2	Fcile after bulkhead
250 mm	3	In Bridge sides
250 mm	2	In Poop Ford Bulkhead
300 mm	2	In do
300 mm	12	In poop shell
350 mm	48	- do -
250 mm	4	- do -

Vertical distance of Sill of lowest Side Scuttle above top of keel. 15,014 M.

Particulars of Guard Rails:—

Freeboard Deck:— Open Rails

Fcile do

Poop do

3 rods.

Particulars of Gangways, Lifelines, etc.:—

Stanchion as per section at every transverse (3,000 M Apart.)

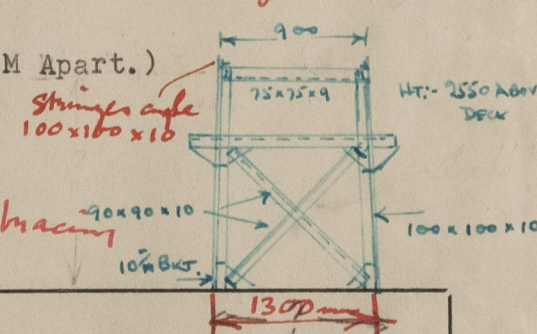
Top plate: 45 mm Chequered plate

of Gangway 450 mm to starb'd of Ship

gangway constructed in accordance with circular 1687

for coaling machine fitted

3 guard rails.



Particulars of Freeing Arrangements.

	Length of Bulwark	Height of Bulwark	Size of Freeing Ports	Number each side	Area each side	Rule area each side
After Well ...			Open Rails			
Forward Well ...						

State position of each freeing port ... { After Well:—  
(F. and A. position and height above deck edge) { Forward Well:—

State whether the freeing ports are fitted with shutters, bars, or rails, and give particulars of such:—

Additional area where sheer is less than standard.

# PARTICULARS OF PROTECTION TO OPENINGS, ETC.

HATCHWAYS ON FREEBOARD AND SUPERSTRUCTURE DECKS.									
		Fore Deck		Upper Deck		Poop Deck			
Description of Hatchway	...	Searchlight Hatch	Cargo Hatch	Cargo Hatch	Fuel Oil Hatch	Main Provision Hatch	Rope Hatch		
Dimensions of Hatchway	...	1220 x 1420	3425 x 4000	750 ø	750 ø	550 x 550	1220 x 1330	550 x 550	
COAMINGS	Height above Deck	615 ✓	615 ✓	760 ✓	760 ✓	465 ✓	525 ✓	525 ✓	
	Thickness { Sides	11	11	11	11	11	11	11	
	Stiffeners ... Ends	-	180 x 9.5B	-	-	-	-	-	
	Brackets, Stays	-	Bkt. 11mm	-	-	-	-	-	
HATCH BEAMS	Number ...	-	-	-	-	-	-	-	
	Spacing ...	-	-	-	-	-	-	-	
	Scantling and Sketch	-	-	-	-	-	-	-	
	Bearing Surface	-	-	-	-	-	-	-	
FORE AND AFTERS	Number ...	-	-	-	-	-	-	-	
	Spacing ...	-	-	-	-	-	-	-	
	Unsupported Lengths	-	-	-	-	-	-	-	
	Scantling* and Sketch	-	-	-	-	-	-	-	
HATCH COVERS	Material ...	Hinged Steel W/T.	W/T Steel.	W/T Steel.	Hinged W/T Steel.	Hinged W/T Steel.	Wood.	Hinged W/T Steel.	
	Thickness ...	6 1/4	6 1/4	13 1/4	13 1/4	6 1/4	60 1/4	6 1/4	
	How fitted	Bolts 7/8 ø	Bolts 1 ø	1 1/4 bolts	7 Torques	4 Torques	F&A 70 1/4	4 Torques.	
	Bearing Surface	Agd 1/2 APND	-	-	-	-	-	-	
Spacing of Cleats	...	Rubber	Rubber	Rubber	-	-	515	-	
Number of Tarpaulins...	...	Joint	Joint	Joint	-	-	2	-	
*Are wood fore and afters steel shod at all bearing surfaces? - Are battens and wedges efficient and in good condition? Yes ✓ Are tarpaulins in good condition and in accordance with rule requirements? Yes ✓ Are lashings provided in accordance with rule requirements? Yes ✓									

Particulars of any special features:—

	Size	Coaming	Closing Appliances
Hatches in Forecastle:-	900 x 900	75 mm x 9 mm	Protected by Steel Bulkhead to Wood Door ✓ Sill:- 235 mm
	1500 x 500		Hinged Steel Door into Trunked Hatch - Sill:235 mm ✓
Hatches in Poop:-	500 x 500 750 x 1.800		No Protection:- End Bulkhead Class I appliance with 615 sill. ✓

	Plating	Stiffeners	Spacing	Openings	Sills	Doors.
House on Bridge Deck:-	Front	8 125x75x10 1	800	-	-	-
	Sides	7.5 100x75x7 1	750	-	-	-
	Aft	7 100x10 F.B.	800x800	2@ 700x1720 1@ 650x1720 1@ 750x1720	235 ✓ 235 ✓ 235 ✓	Wood Wood Wood
House on Poop Deck:-	Front	8 125x75x7 1	800	1@ 700x1490	465 ✓	Hinged Steel W/T.
	Sides	7.5 100x75x7 1	800/750	2@ 700x1490	465 ✓	Wood
	Aft	7 100x75x7 1	800	2@ 700x1490 1@ 700x1650	465 ✓ 235	Wood Hinged Steel W/T.

Access Below from Bridge Deck:- Hatch 1@ 500x500 Coaming 230x10 with Hinged Steel Cover.  
 Stair way 1@ 850x2000 Protected by inside wood bulkhead with 235 mm Steel Sill to wood door.

Access Below from Poop Deck:- 4@ 850 x 2000 Protected by Steel Bulkhead and  
 1@ 850 x 2100 Steel doors with 235 mm Sill. to hallways see Companionways



© 2021

Lloyd's Register Foundation