

No. 1689 SHIP STERNFRAME & RUDDER PLAN, 81711, 81753

SCALES AS SHOWN

550' -0 L.B.P. x 70' -0 B. MLD. x 31' -8 1/4" DRAUGHT (APPROX)

SPEED - 17 KNOTS.

RUDDER AREA - 243 sq ft

LOYDS A x D = 671

RUDDER STOCK RULE DIA. 13 1/8

10% FOR TANKERS - 14 1/2

RUDDER ANGLE, MAX. 14 1/2

TO PASS LLOYDS TESTS & REQUIREMENTS.

STERNFRAME OF CAST STEEL

RUDDER TO BE FABRICATED BY SHIPBUILDERS

RUDDER STOCK OF FORGED STEEL, ENLARGED IN

WAY OF LOWER BEARING, RUDDER CARRIER, MAIN &

AUXY TILLERS (PARTS TO BE FURNISHED LATER)

RUDDER MAINPIECE OF FORGED STEEL

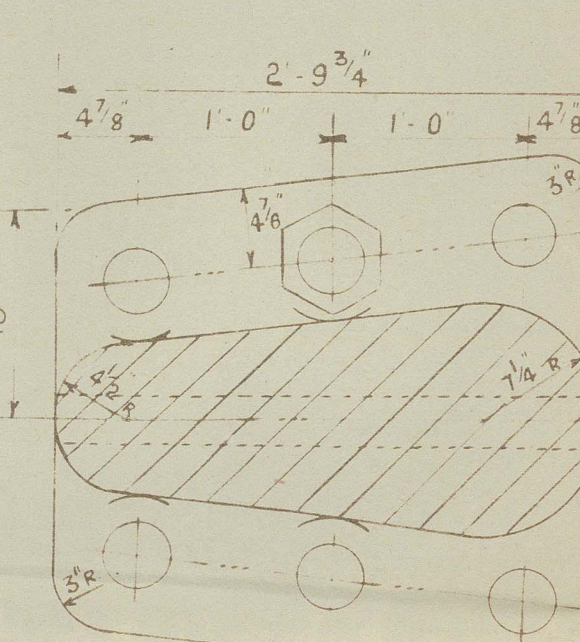
NOTES

1. THE FORWARD AND AFTER PARTS OF THE RUDDER ARE TO BE FILLED WITH SOLUTION AND SUBJECTED TO A PRESSURE OF 75 LBS./SQ. IN. WHICH CONDITION SAME WILL HAVE TO BE ACCEPTED BY LLOYDS AFTER THAT THE SOLUTION WILL HAVE TO BE REMOVED AND THE SCREW PLUGS INSERTED.
2. THE ELECTRIC WELDING SHOULD BE CARRIED UP TO THE SATISFACTION OF THE SOCIETY'S SURVEYORS AND THE REGULATIONS FOR THE APPLICATION OF ELECTRIC ARC WELDING TO SHIP CONSTRUCTION SHOULD BE COMPLIED WITH.
3. TAKE SPECIAL CARE THAT THE RUDDER STOCK IS FLUSH WITH THE RUDDER BEARINGS FOR THE CYLINDRICAL RUDDER POST.
4. FOR INSIGHTING OF STERN TUBE RUSH THE RUDDER COUPLING TO BE DISCONNECTED.

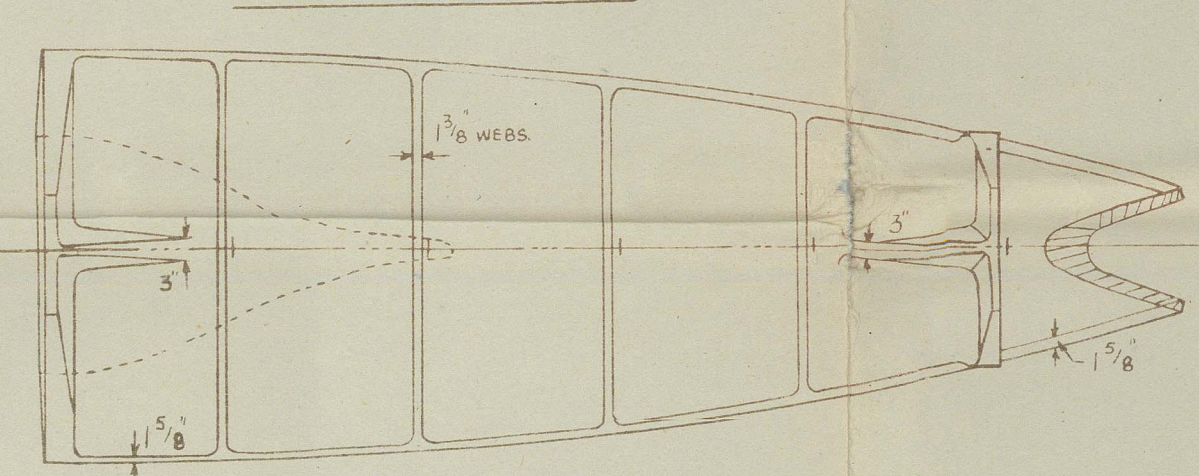
FOR INSIGHTING OF STERN TUBE RUSH THE RUDDER COUPLING TO BE DISCONNECTED.

A RUDDER SAWING TO 50°

RUDDERSTOCK COUPLING



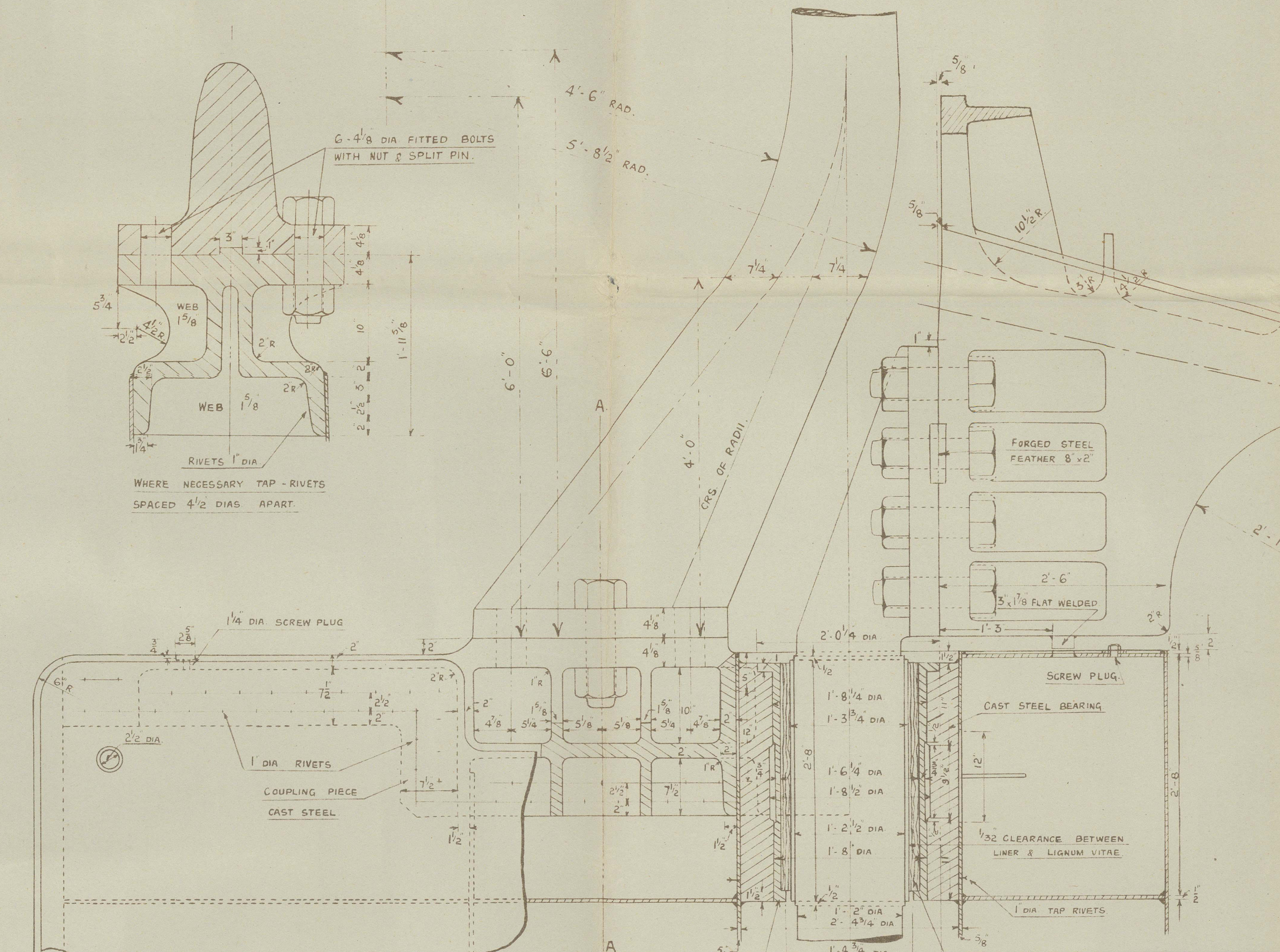
TOP OF CASTING



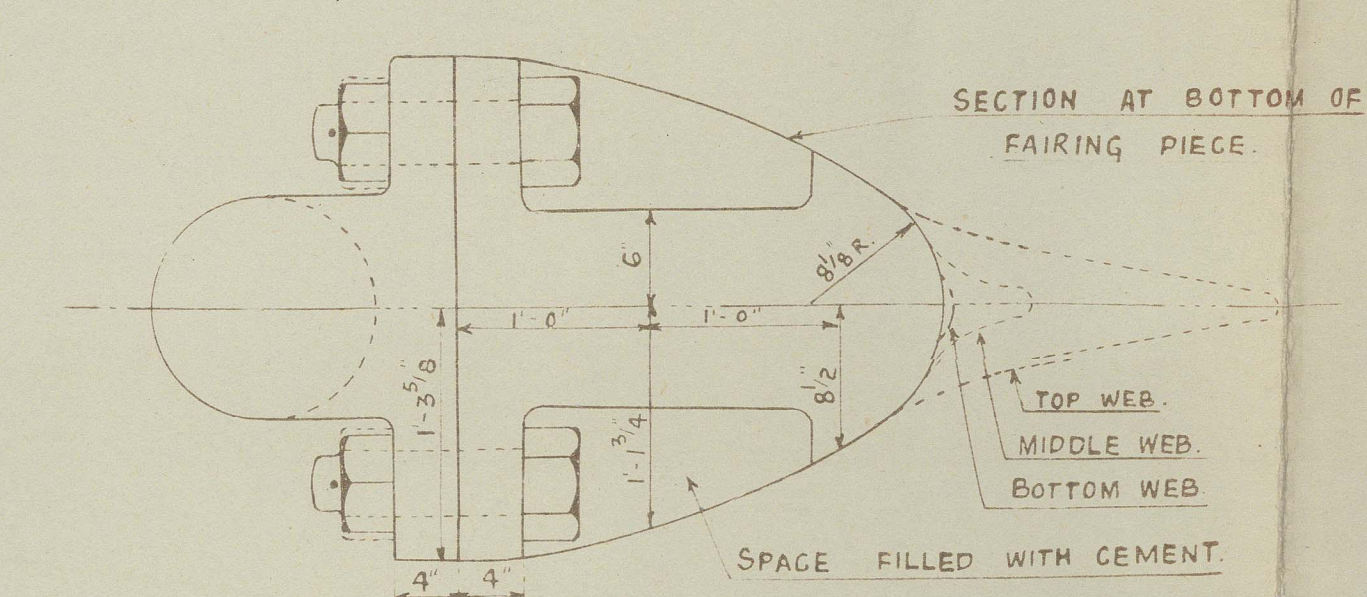
SCALE - 1/2 ONE FOOT



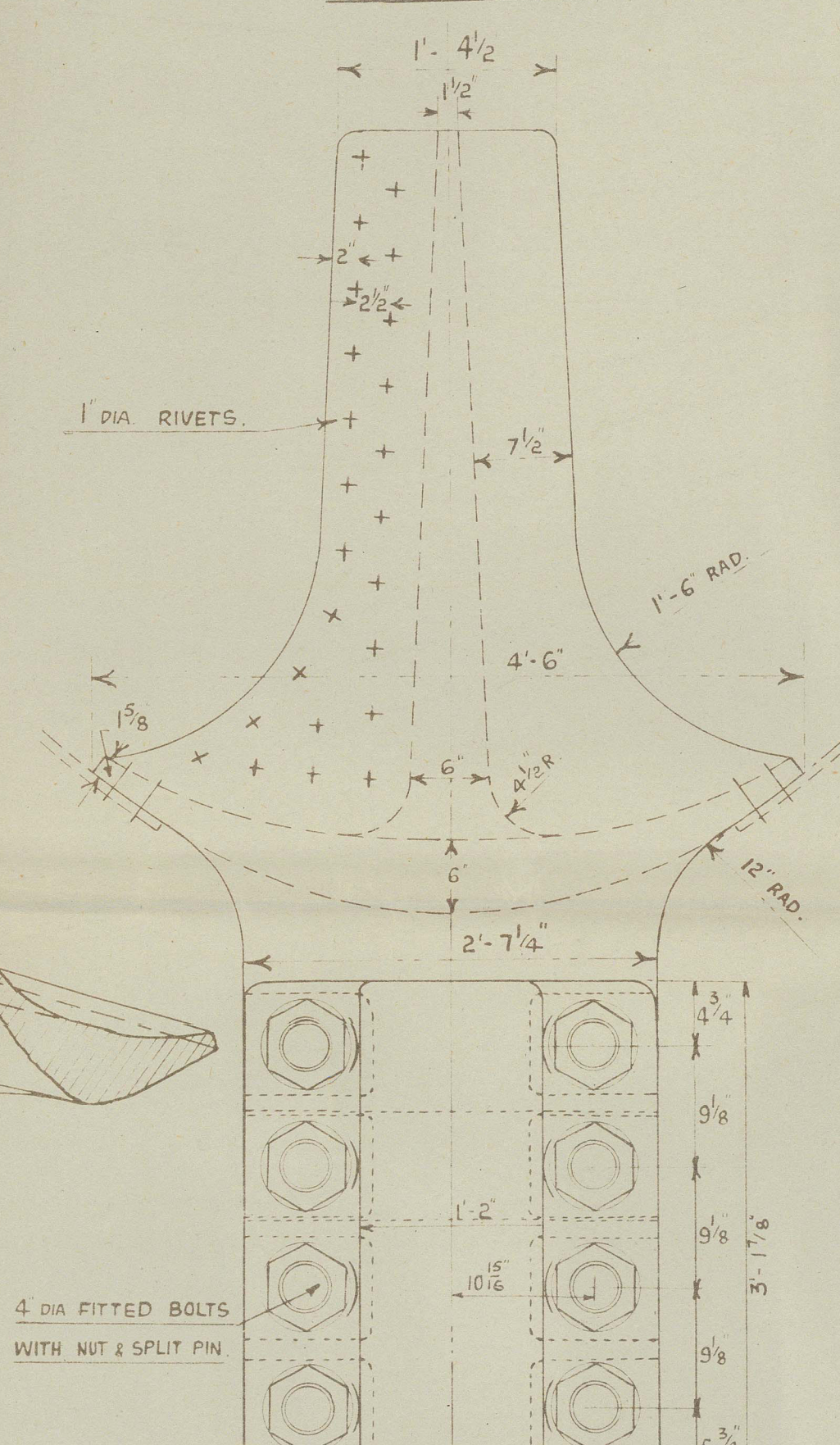
SECTION AT A-A



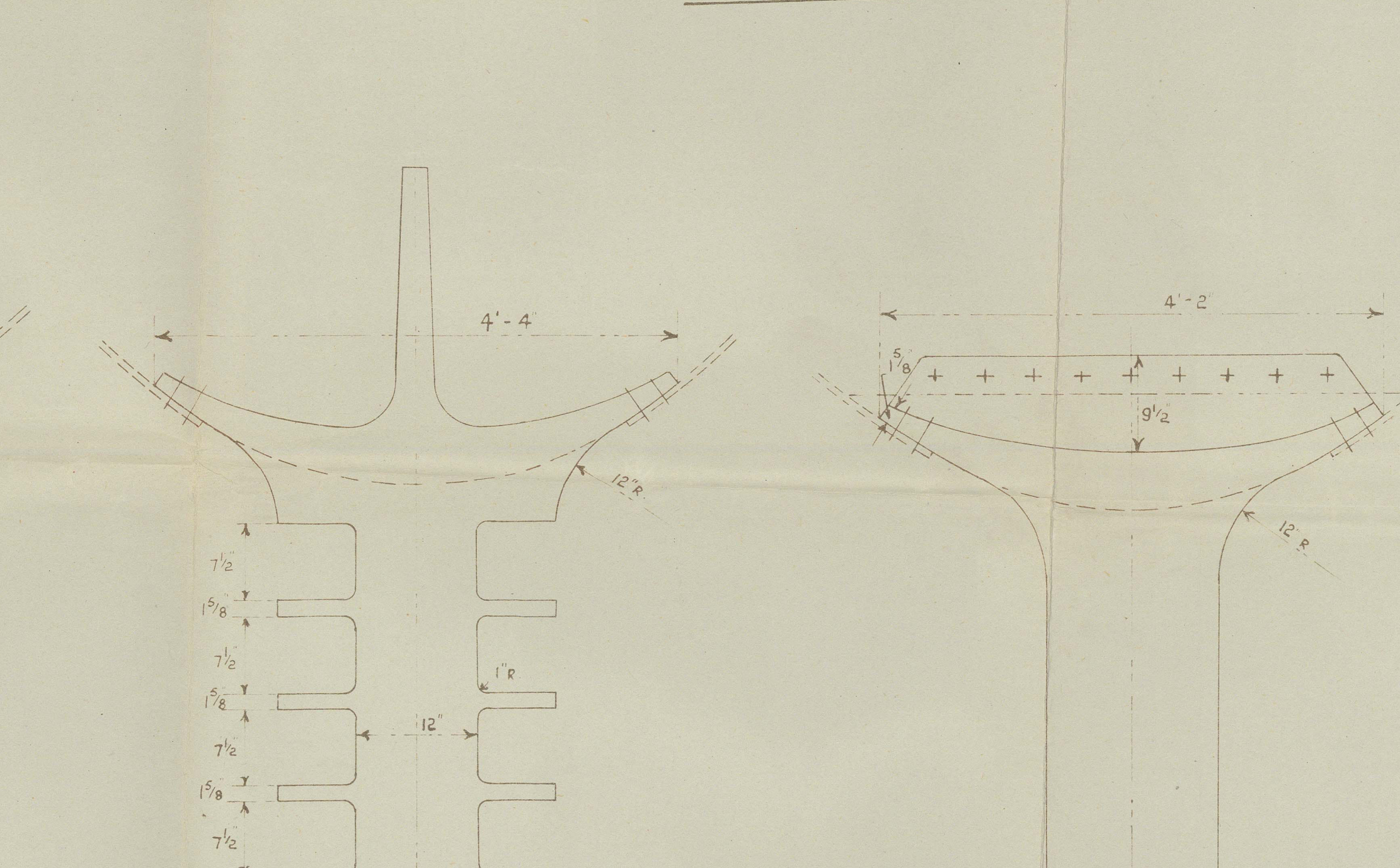
STERNFRAME DETAILS 1/2 = 1 FOOT



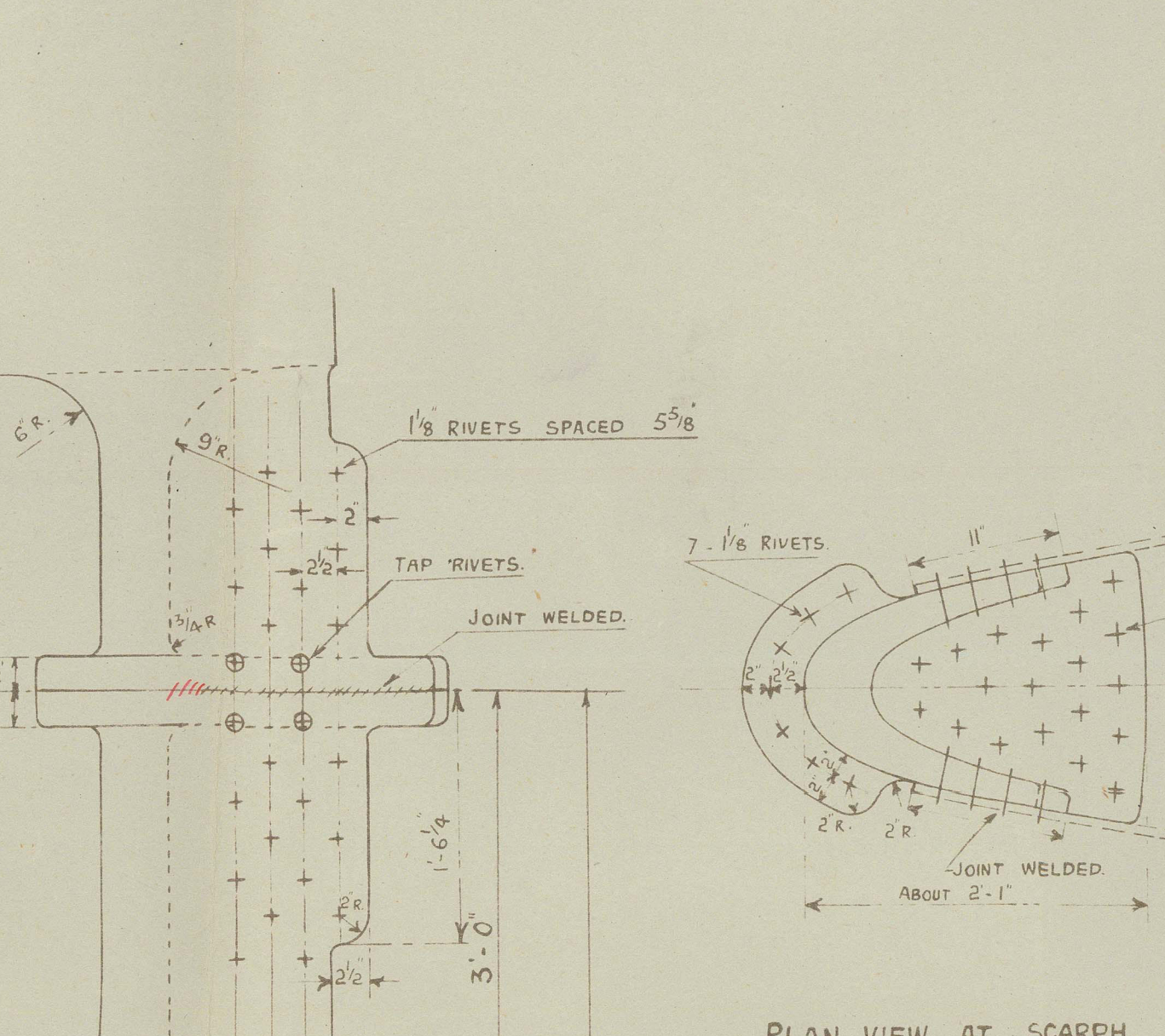
SECTION AT A-P



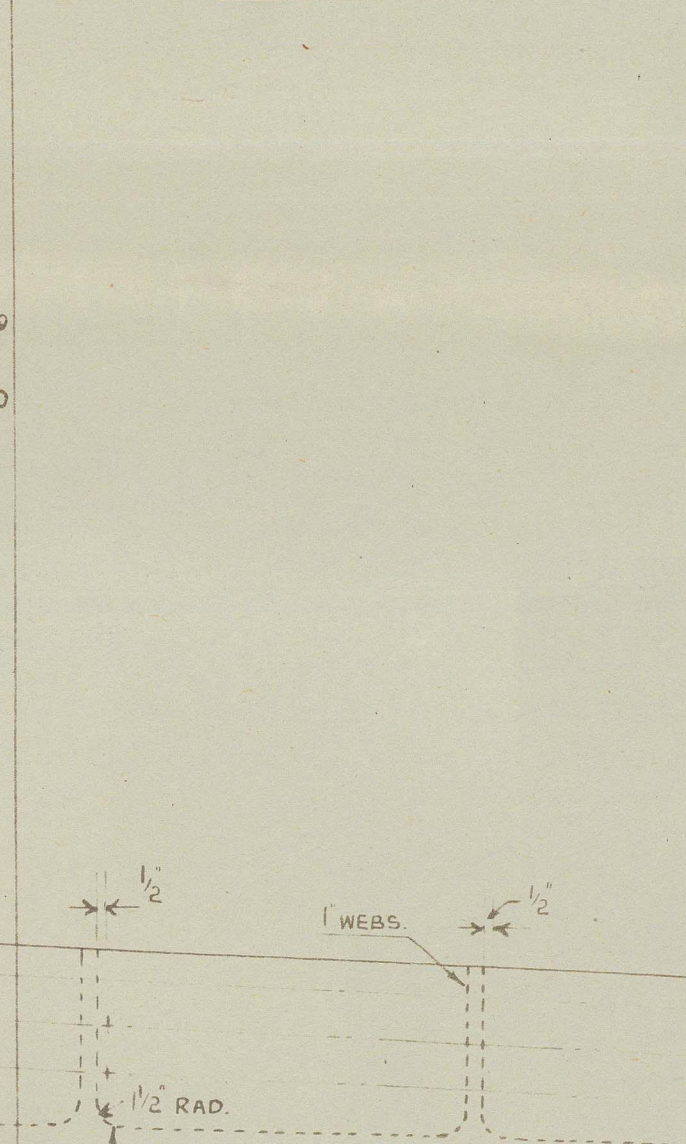
FLOOR CONNECTIONS TO WEBS 1" RIVETS



SECTION 12' FROM A-P



PLAN VIEW AT SCARPH



FRAME 4

FRAME 7

FRAME 8

FRAME 9

FRAME 10

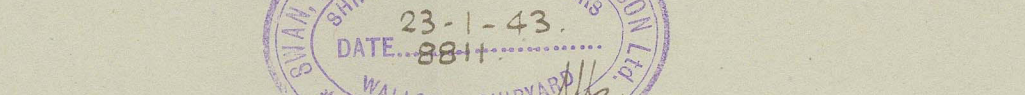
FRAME 11

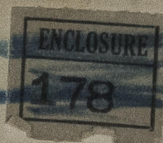
FRAME 12

FRAME 13

FRAME 14


FRONT END OF CASTING





SWAN HUNTER & WIGHAM
RICHARDSON LTD.

SHIP No. 1689

"OLNA" 

NEWCASTLE ON TYNE

Report No.

Stern frame & rudder

SHIP No. 1711

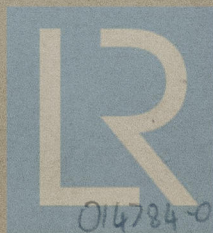
"Helicina"

NEWCASTLE ON TYNE

Report No. 104096

Nº 1753

9



© 2021

Lloyd's Register
Foundation

014784 014793 0004