

Section through hopper.

Particulars not indicated in the plan
After peak bulkhead:

Collision bulkheads:

Watertight bulkheads:

End bulkheads of hoppers:

Wash bulkheads in peaks: plating 7.5mm
Stiffeners 6x45 75x9 - 35x67.5 spaced 60mm
Tank deck plating in fore and after peak: 7.5mm, stringer 8.5
Stem 260x12 with rabbet
Stem frame: I shaped to suit the hull form
Rudder head: plan to be submitted
Frame spacing 650mm, in peaks 670mm

Section through boiler-room.

Section through fore part. (abt. fr. 148.)

| Firing | Endplates at ends | | Endplates at ends | | Seams | |
|--------------------------------------------------|-------------------|--------|-------------------|--------|----------|--------|
| | Endplate | Seam | Endplate | Seam | Endplate | Seam |
| Flat plate keel | 22 3/4 | 22 3/4 | 22 3/4 | 22 3/4 | 22 3/4 | 22 3/4 |
| Shell pl. keel to upper of bilge | 22 3/4 | 22 3/4 | 22 3/4 | 22 3/4 | 22 3/4 | 22 3/4 |
| Upper of bilge to sheer | 22 3/4 | 22 3/4 | 22 3/4 | 22 3/4 | 22 3/4 | 22 3/4 |
| Sheer to sheer | 22 3/4 | 22 3/4 | 22 3/4 | 22 3/4 | 22 3/4 | 22 3/4 |
| Sheer to sheer | 22 3/4 | 22 3/4 | 22 3/4 | 22 3/4 | 22 3/4 | 22 3/4 |
| Upper deck stringer plate | 22 3/4 | 22 3/4 | 22 3/4 | 22 3/4 | 22 3/4 | 22 3/4 |
| Upper deck plating | 22 3/4 | 22 3/4 | 22 3/4 | 22 3/4 | 22 3/4 | 22 3/4 |
| Thru deck stringer plate | 22 3/4 | 22 3/4 | 22 3/4 | 22 3/4 | 22 3/4 | 22 3/4 |
| Side plating of well | 22 3/4 | 22 3/4 | 22 3/4 | 22 3/4 | 22 3/4 | 22 3/4 |
| Side plating of hopper | 22 3/4 | 22 3/4 | 22 3/4 | 22 3/4 | 22 3/4 | 22 3/4 |
| Double bottom plating | 22 3/4 | 22 3/4 | 22 3/4 | 22 3/4 | 22 3/4 | 22 3/4 |
| Fuel oil bunker plating | 22 3/4 | 22 3/4 | 22 3/4 | 22 3/4 | 22 3/4 | 22 3/4 |
| Watertight bulkheads | 22 3/4 | 22 3/4 | 22 3/4 | 22 3/4 | 22 3/4 | 22 3/4 |
| Vertical and foundation plates of centre keelson | 22 3/4 | 22 3/4 | 22 3/4 | 22 3/4 | 22 3/4 | 22 3/4 |
| Floor plates and web frames | 22 3/4 | 22 3/4 | 22 3/4 | 22 3/4 | 22 3/4 | 22 3/4 |

Equipment number 3199, letter X.

- 3 special Hall bowers 2770 kg each
- 1 stream anchor 970
- 2 stud chain cables 2 1/2" diam, 247.5m = 135 fathoms each
- 1 1 1/2" 165 m = 90
- 1 towing steelwire 1/4" circ, 220m = 120 fathoms
- 2 hawsers 2 1/2" 165 m = 90
- 2 warps 2 1/2" 165 m = 90

Notice: Approved by Lloyds Register 11.12.33

S. 1301. Twin-Screw- Steam- Suction-Hopper-Dredger.

Midship-Sections.

1:25, 1:5, 1:1.

Class: Lloyds Register 100 A1 Hopper Dredger.

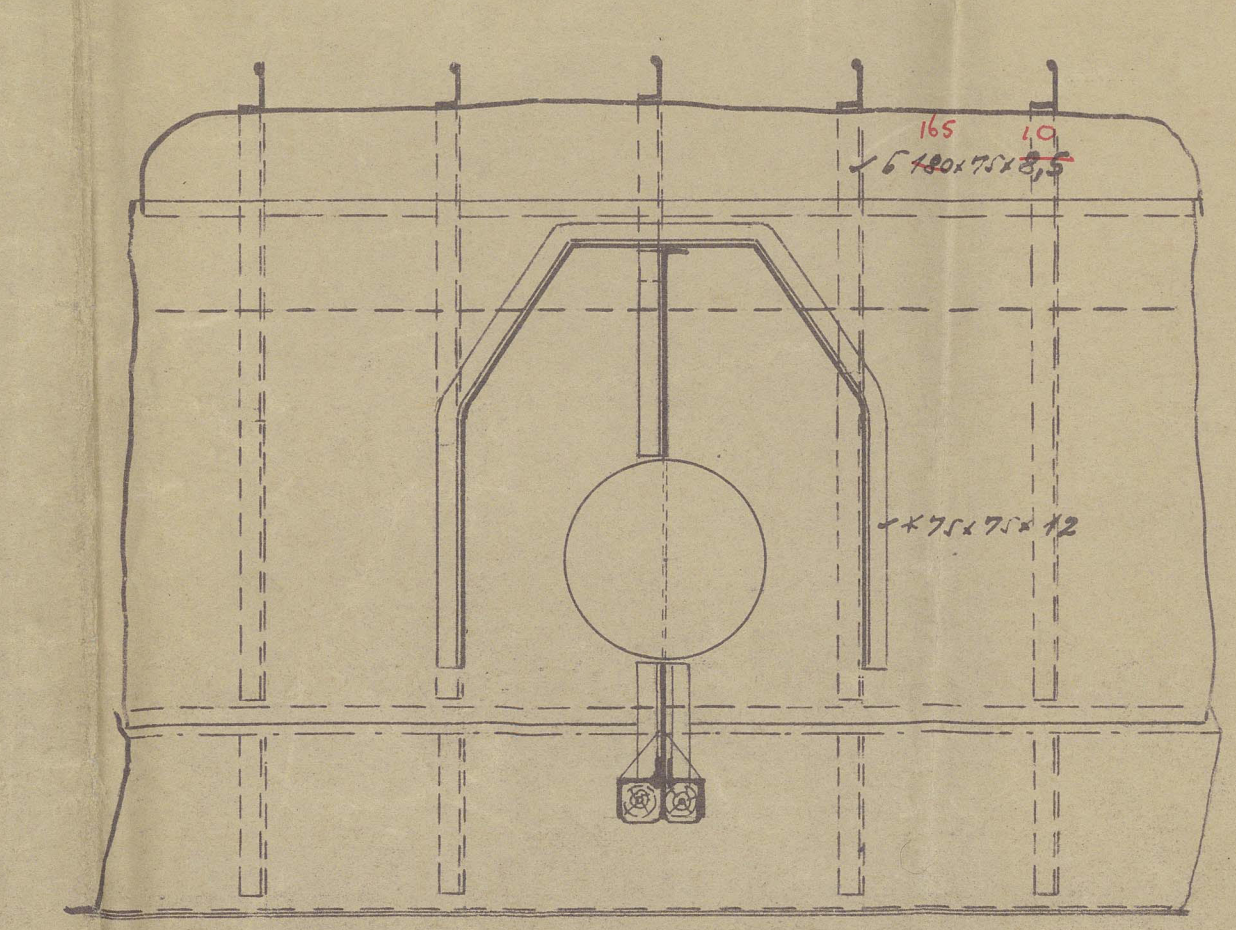
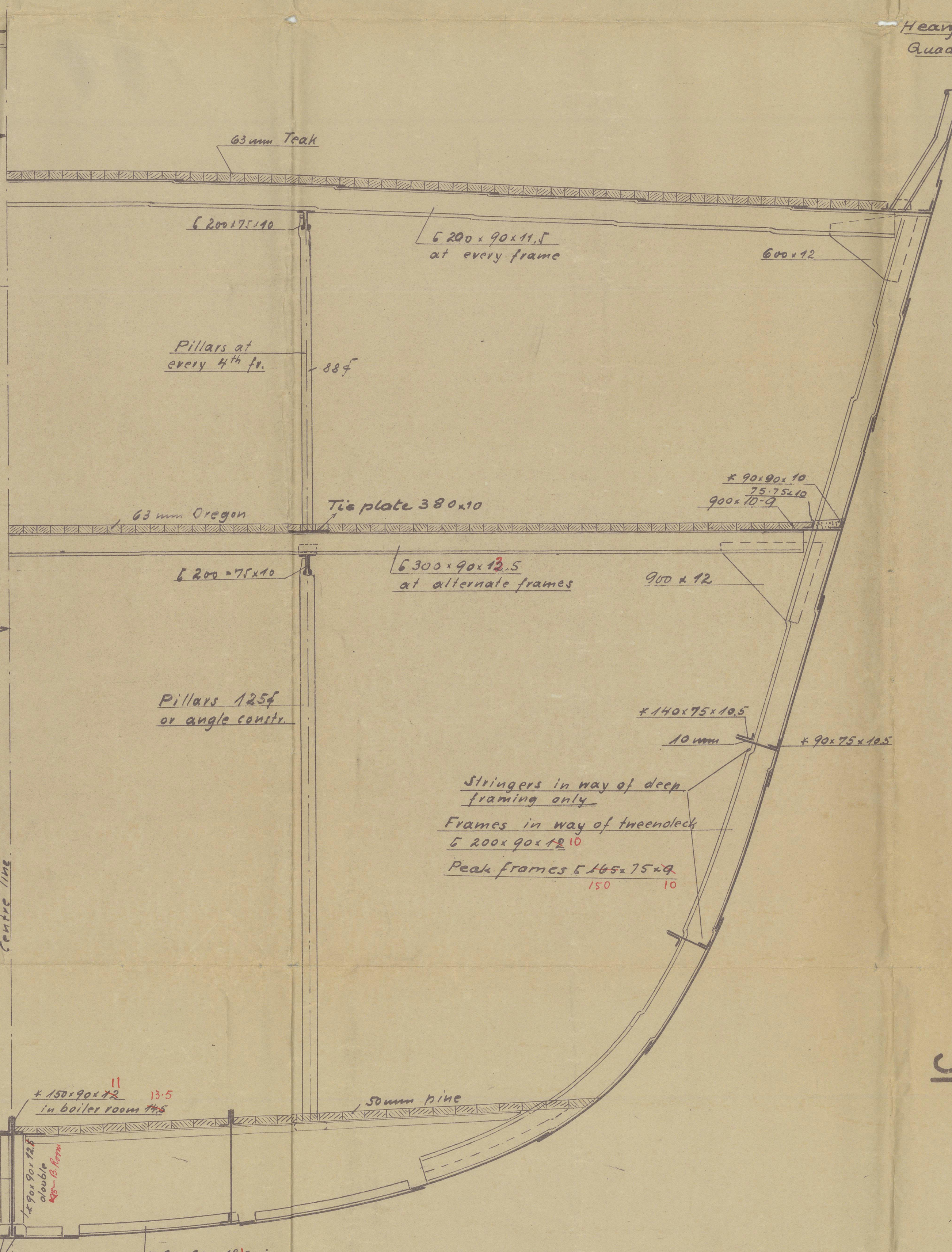
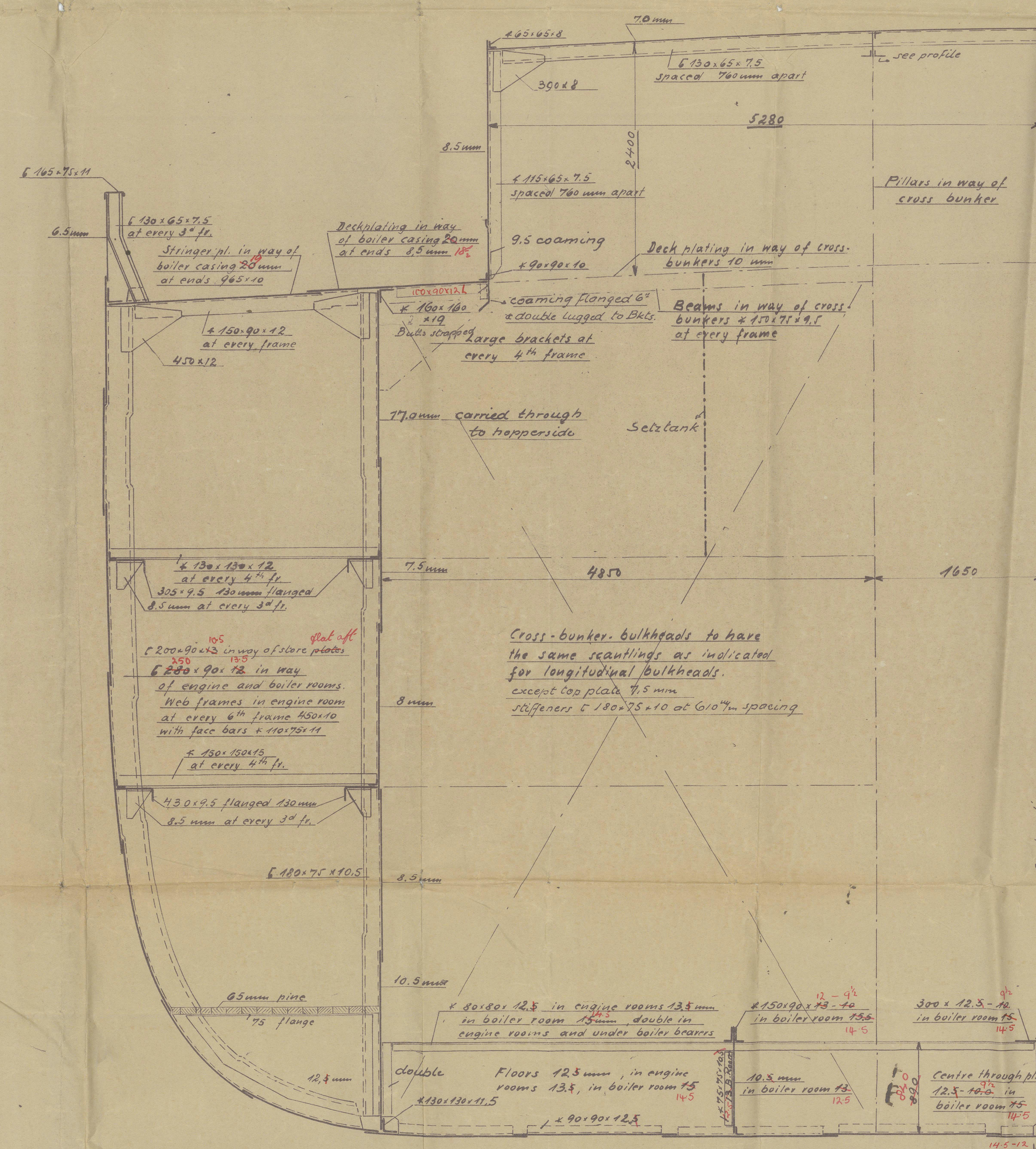
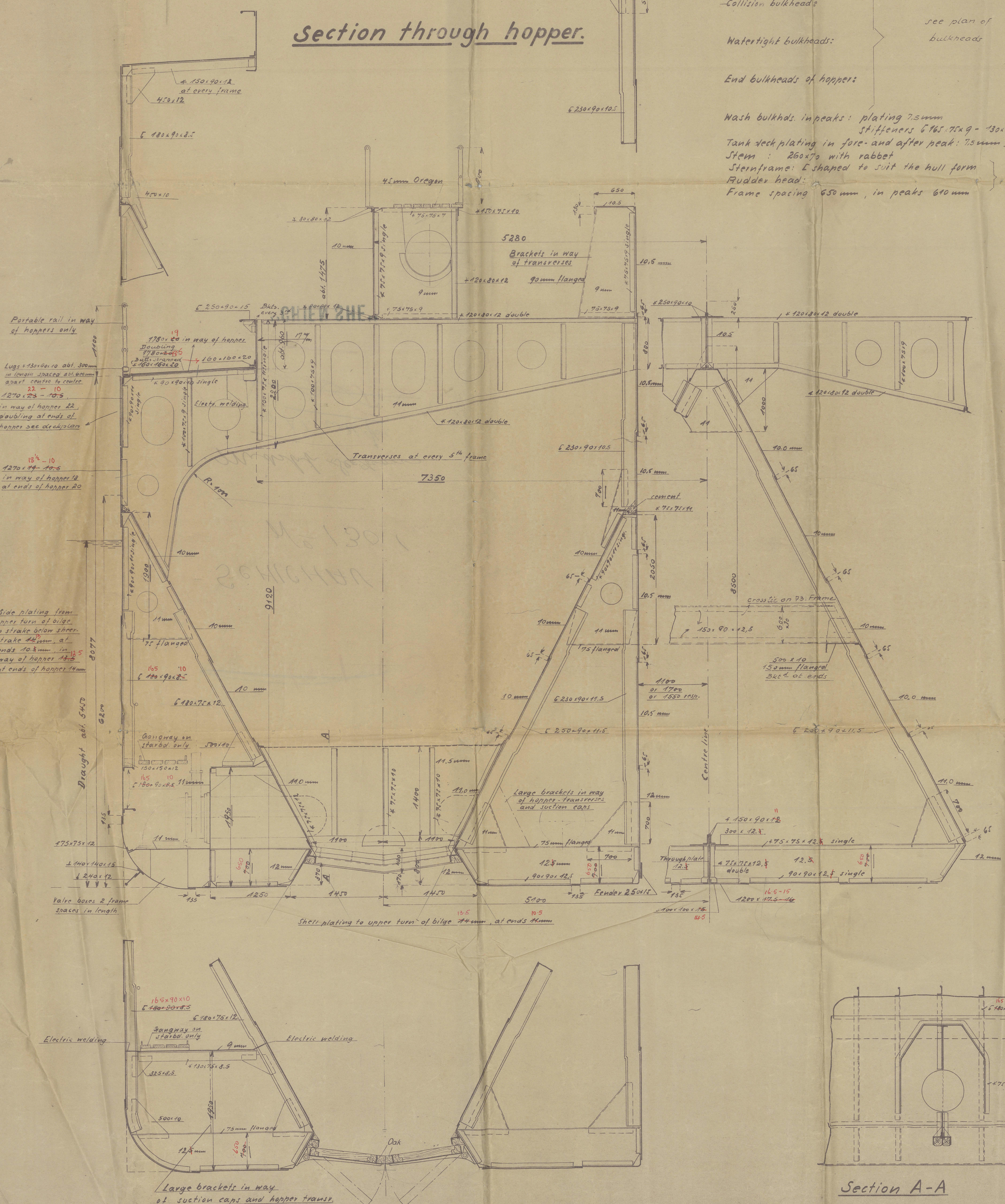
Length betw. perpendiculars 360'0" = 109.726m
Breadth moulded 60'0" = 18.288m
Depth moulded 26'6" = 8.077m
Draught 18'0" = 5.491m

L x D = 9540
L : D = 13.56
L (B+D) = 31140
d = 21.25 or 23.5 or 15.5 resp.

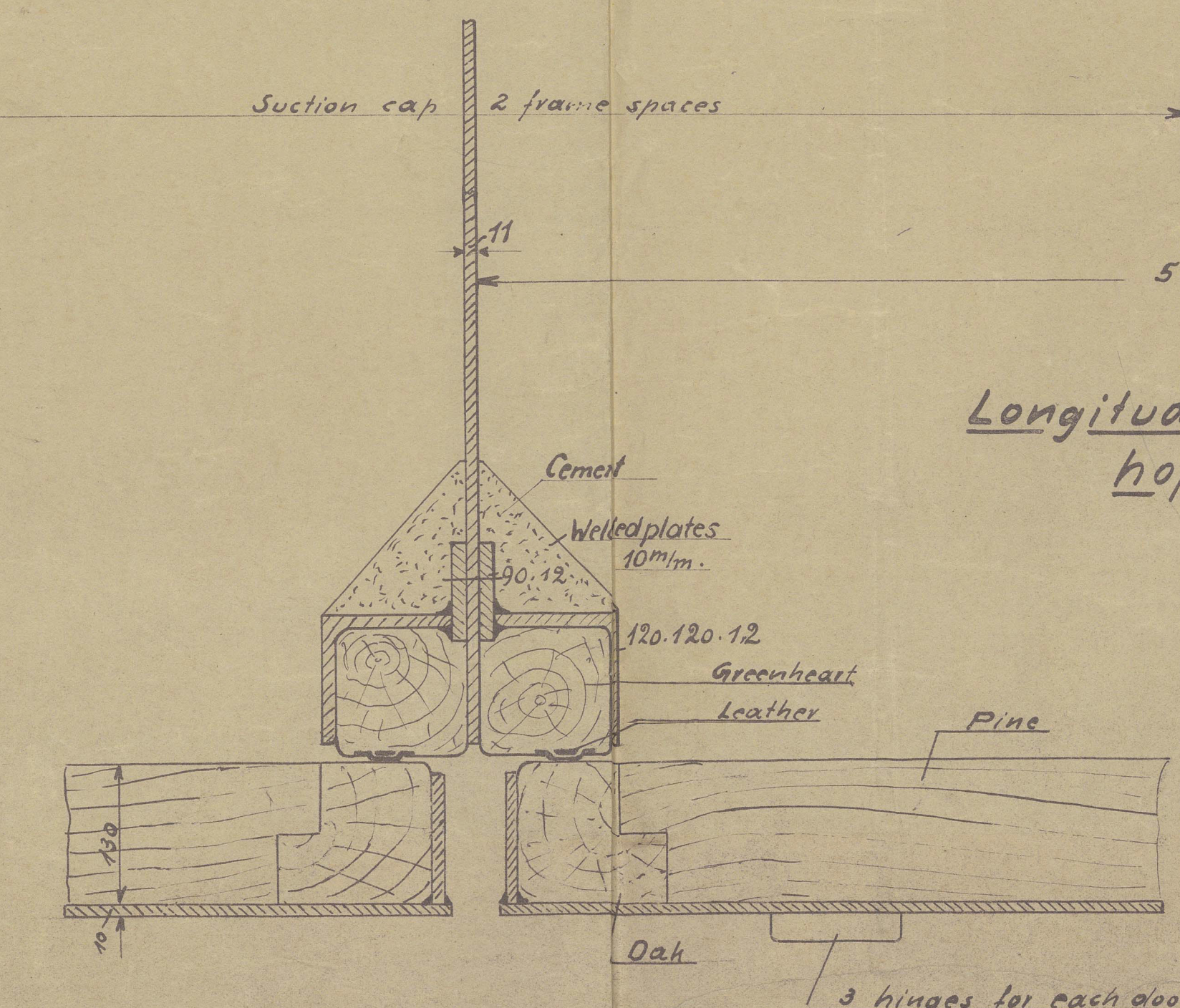
F. Schöner G. m. H. Ebbing
Abt. Schiffbau zu Hamburg

19. 12. 33

Plan N° 1301/2

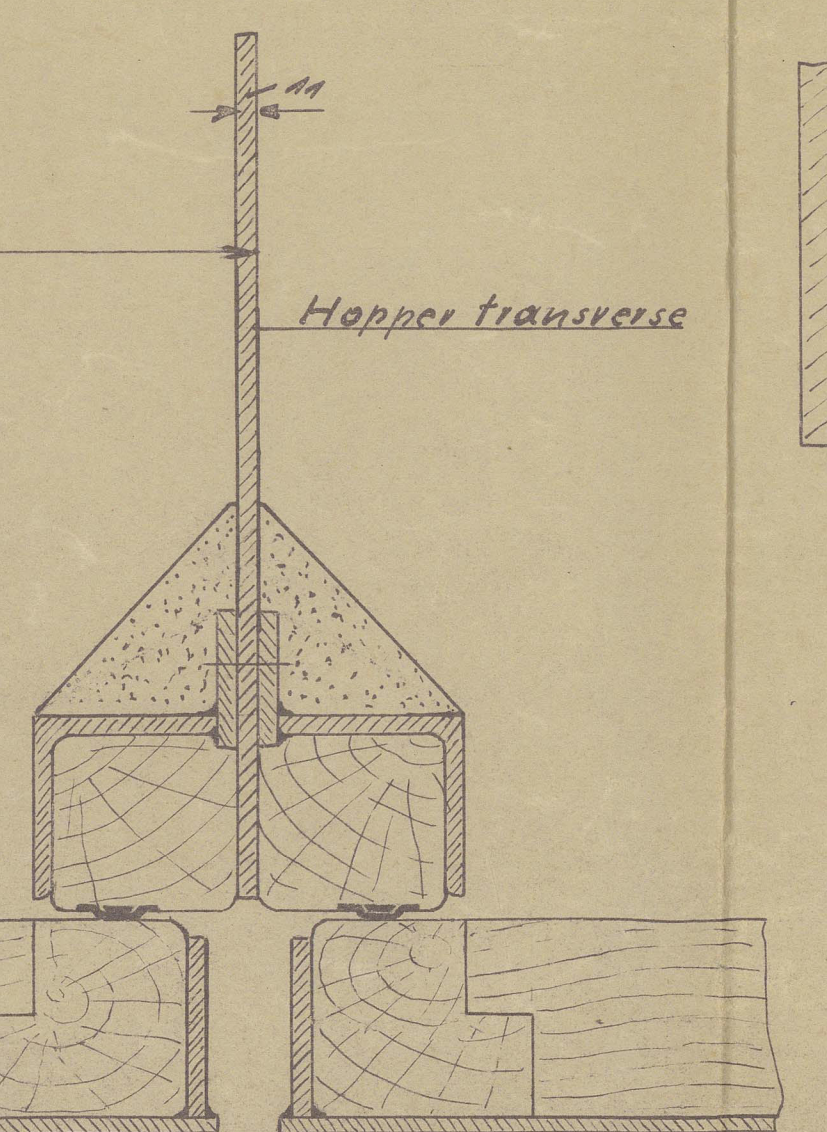


Section A-A



Longitudinal section through hopper doors.

1:5



Detail of leather tightening.

1:1

~~149~~ (5)

SCHICHAU

N^o 1301

Midship Sections

100 A 1. with ~~for~~

~~Lateral Plan~~

"CHIEN SHE"



© 2021

Lloyd's Register
Foundation

014771-014776-0070