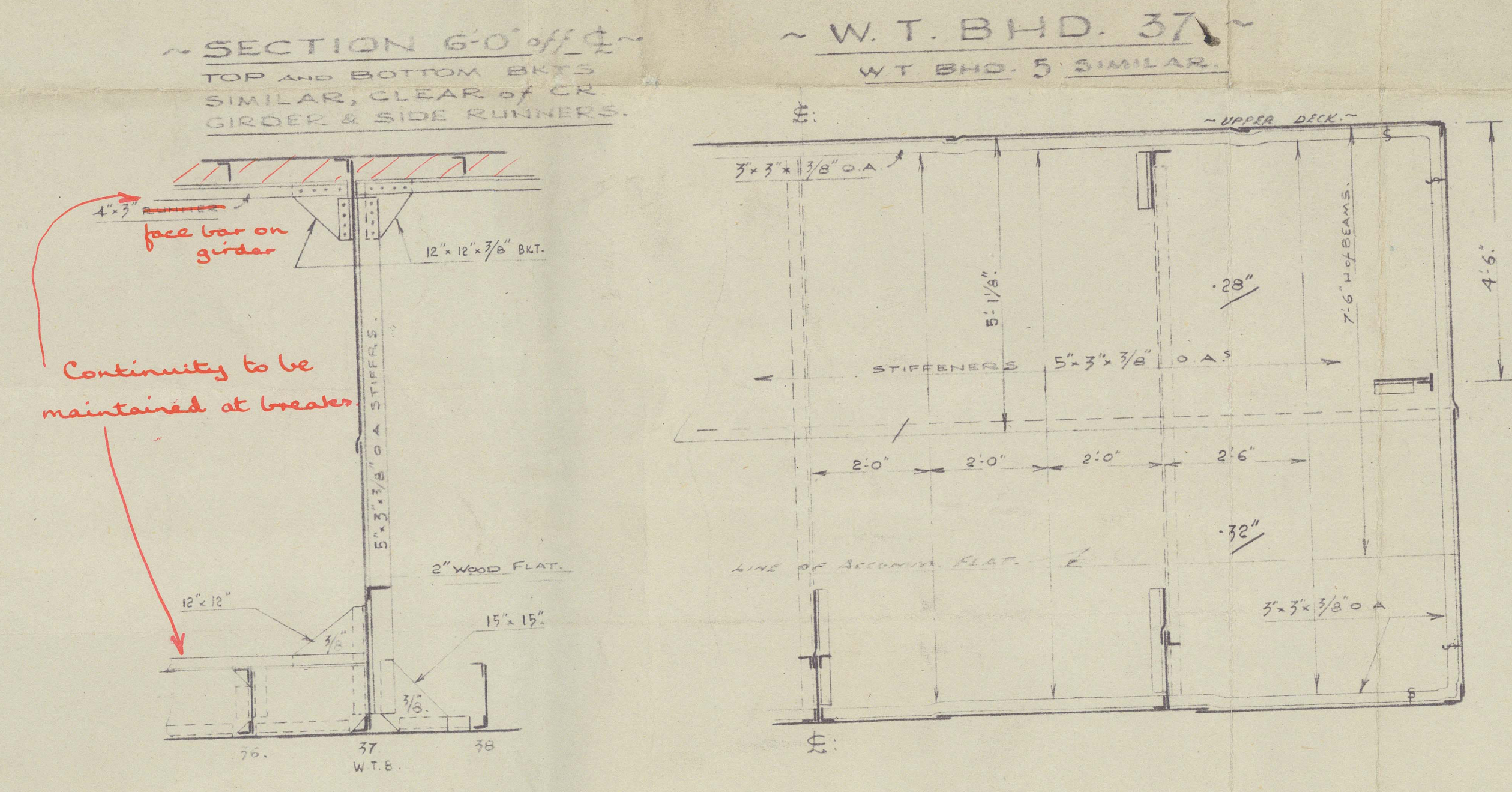
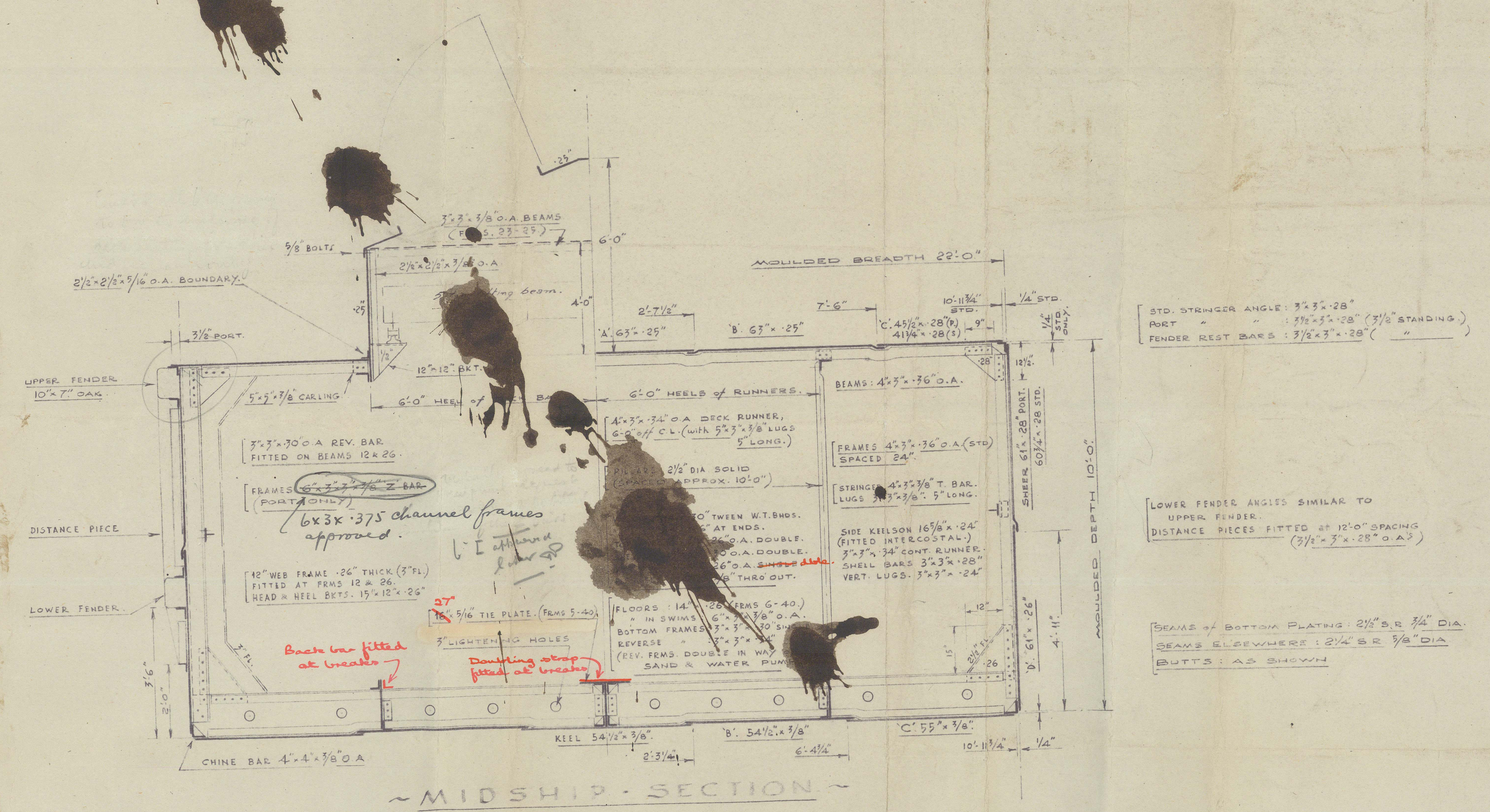
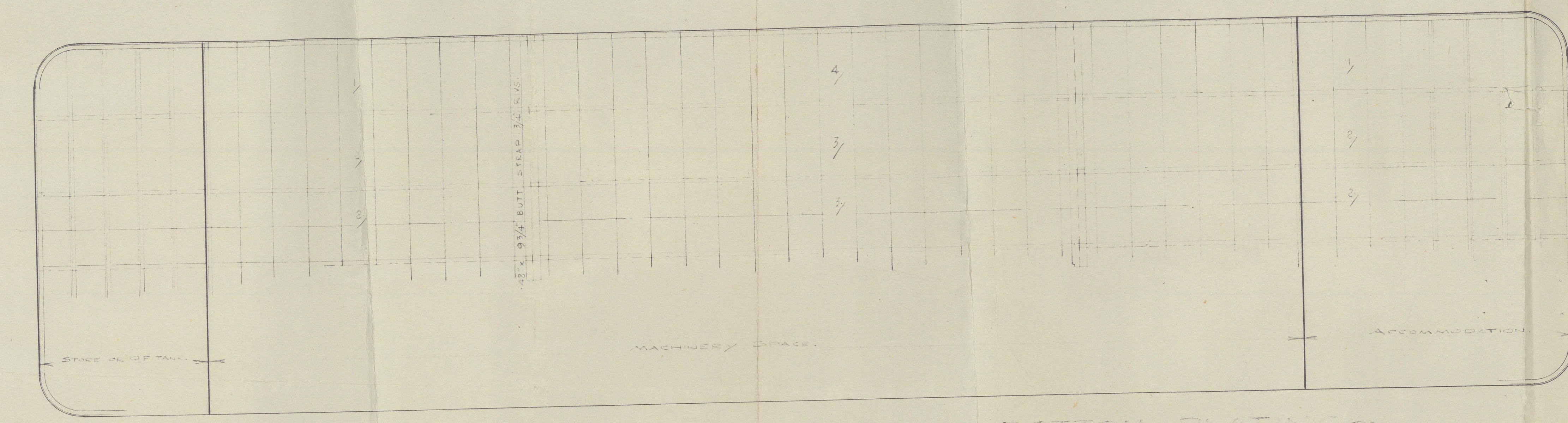
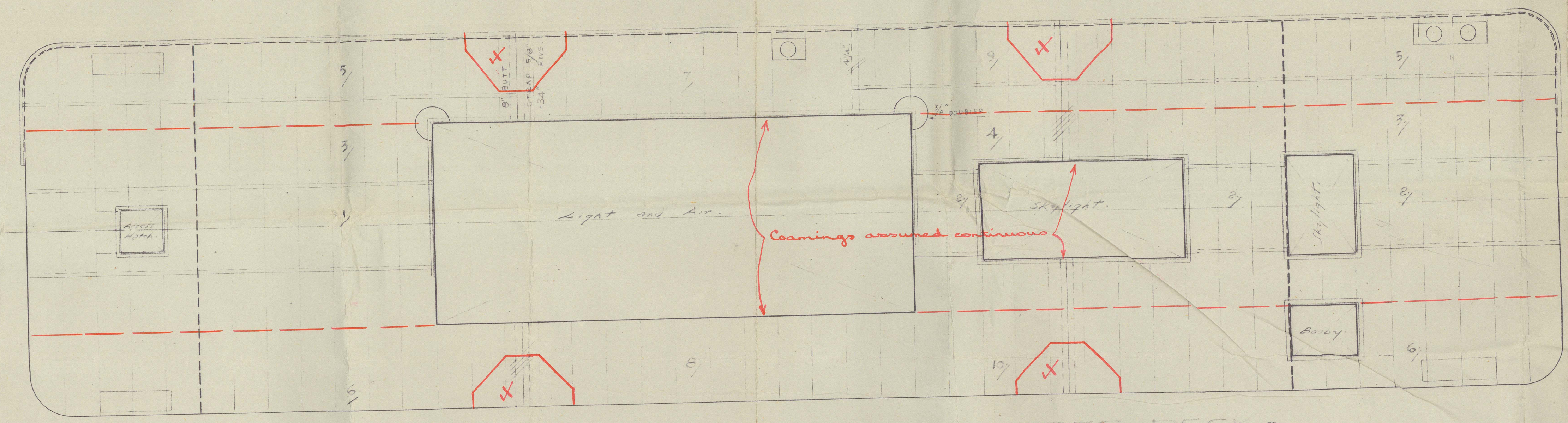
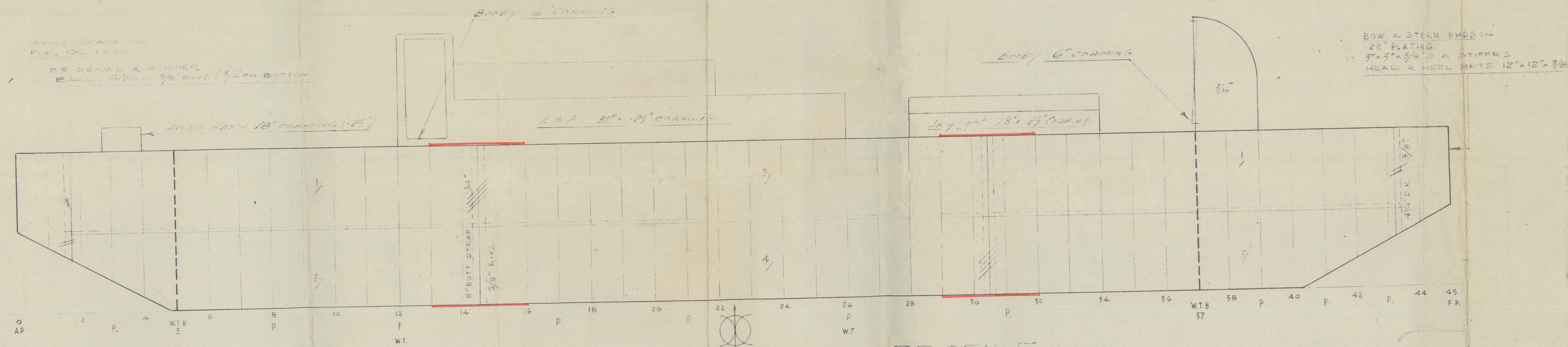


21 DEC 1950

Class A - "Barge" "For River and Estuary Service".
"Fitted for Pumping Sand"



WESTMINSTER DREDGING CO.
30'-0" LKELING BOATON.
SCANTLING PLAN.
SPACED 1'-0" x 1'-0"
MOULDED LENGTH 30'-0"
MOULDED BREADTH 22'-0"
MOULDED DEPTH 10'-0"
MACHINE PUMP (10 TONS)
WATERPUMP (5 TONS)
WIDE PUMP (1 TON)
TRANSVERSE (2 TONS)

HARLAND & WOLFF
LIMITED
15 DEC 1950
Ship Repairing & Engineering Works
LIVERPOOL

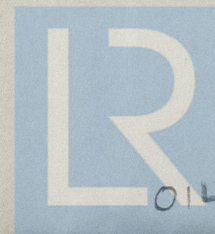
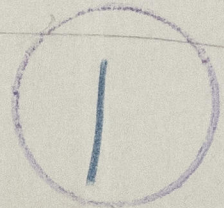
"Holland" ★ Scantling plan.

H & W. 7/2

hiv Rpt

135'954

RECORDS DEPT.
LONDON



© 2021

Lloyd's Register
Foundation

014763-014770-0214