

YARD NOS 150 - 161 ^{Lloyds} Islands

DEEP SEA BAGGES

LONDON COPY!

BILGE SECTION & SOUNDING ARRANGEMENTS

BILGE PUMP :- HAND OPERATED DOWNTON NO 1A

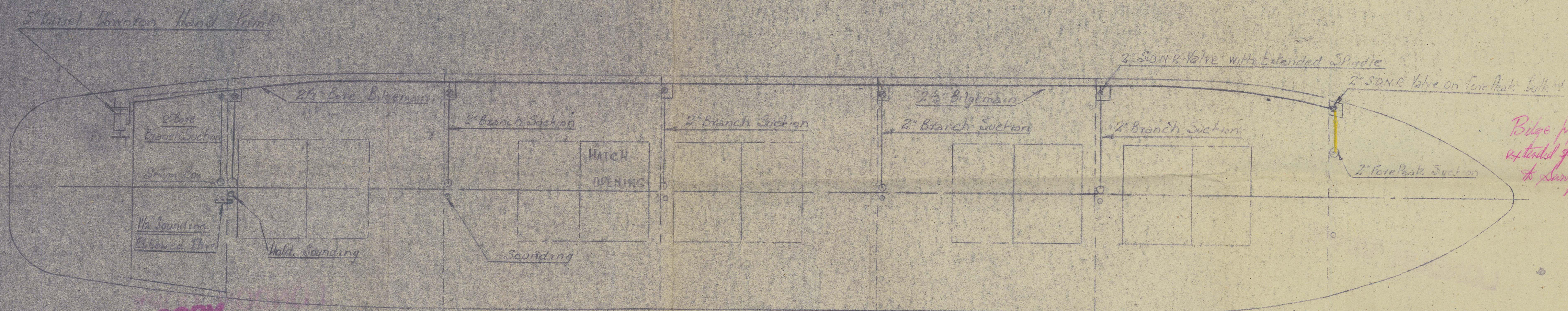
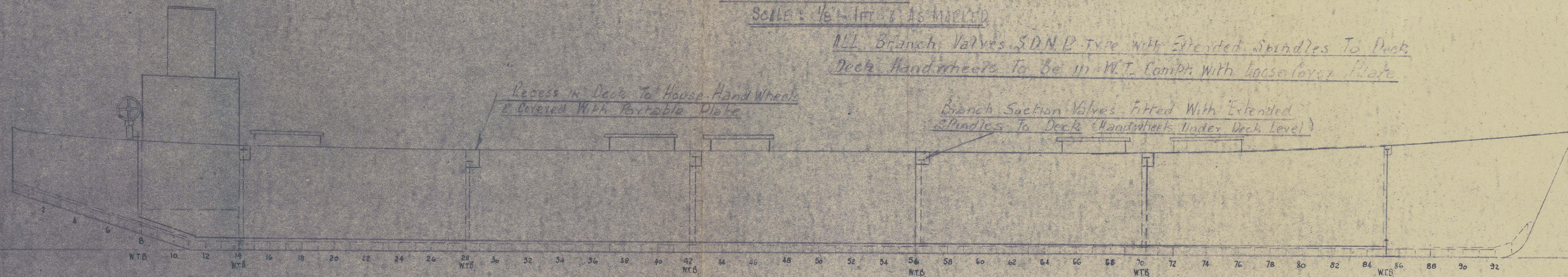
BARREL DIAMETER 5" Suction 2 1/2"

CAPACITY @ 30 STG/MIN (260 GALL/HR)

TO LLOYDS REQUIREMENTS

SCALE: 1/8" = 1 FT AS MARKED

ALL Branch Valves S.D.N.R. Type with Extended Spindles To Deck
Deck Handwheels To Be in M.T. Compn. with Loose Cover Plate



Bilge pipes, valves and
extended spindles to be protected
to Surveyors Satisfaction

23/11/49

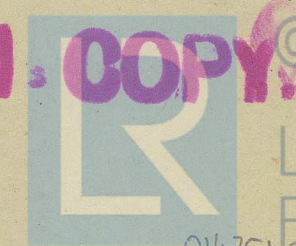
WCC

LONDON COPY!

CLELANDS (SUCCESSORS) LTD.

WALLSEND - ON - TYNE Nov. 1949

LONDON COPY!



© 2021
Lloyd's Register
Foundation

016751-014762-0215

RECORDS DEPT..
LONDON

CLELANDS

150 - BARGE 150
161 - AFTAB

4

Aftab ★

Bilge Suction & sounding
arrgt.

CLELANDS 150/01



© 2021

2

Lloyd's Register
Bilge suction &
sounding arrgt.

014751014762-0215