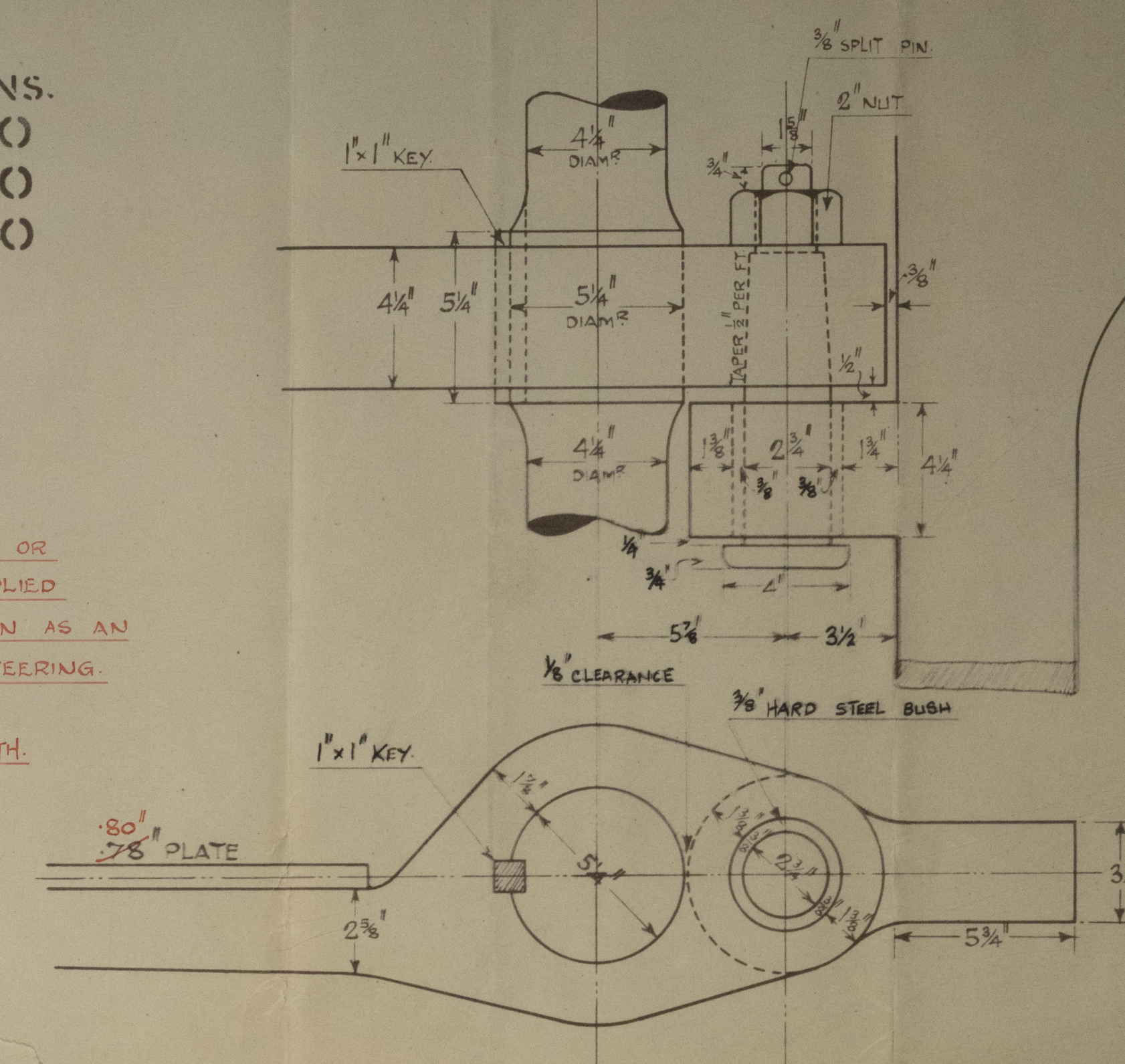


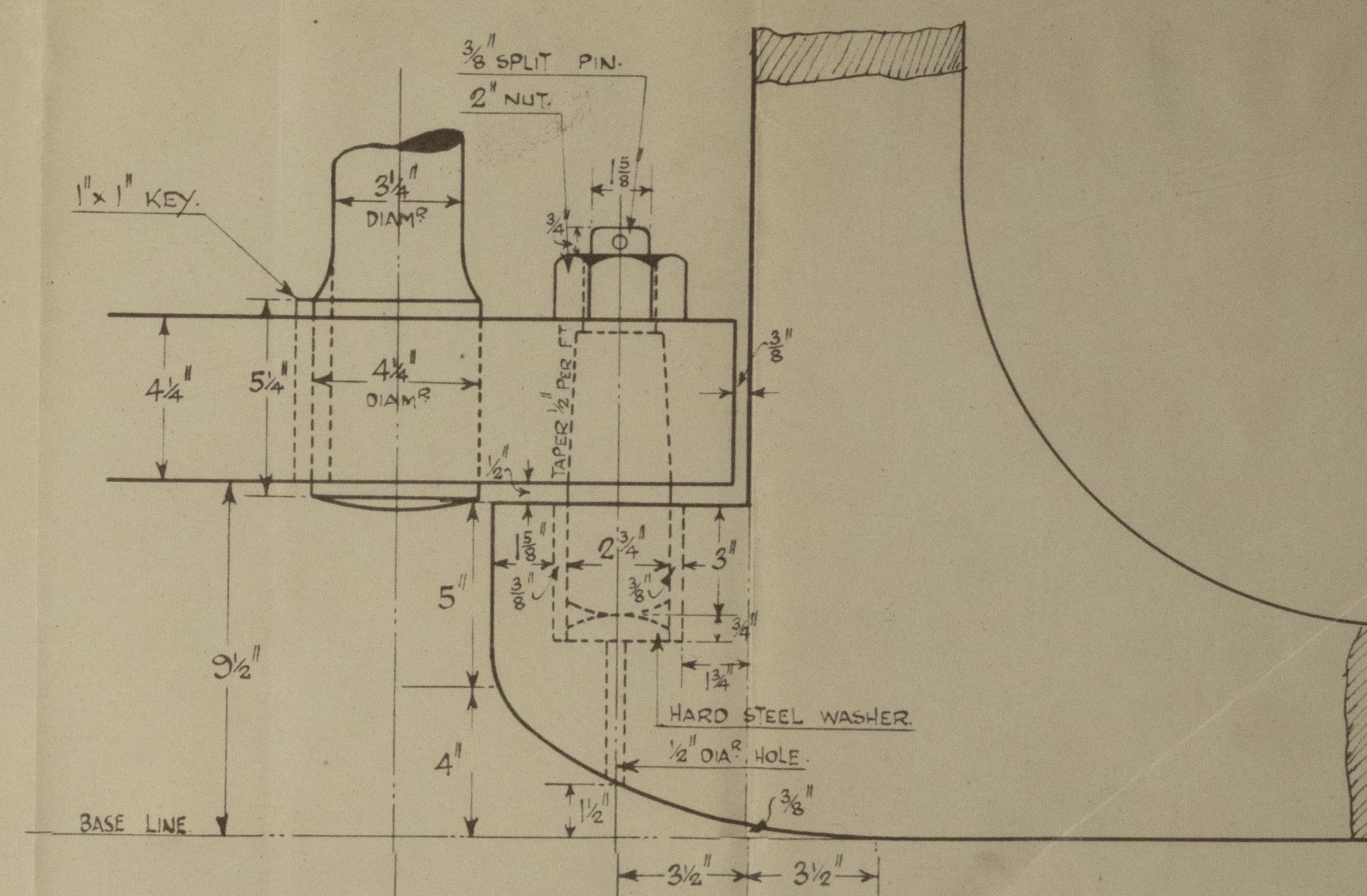
DETAIL OF QUADRANT.

DIMENSIONS		FT.	INS.
LENGTH		150	0
BREADTH MOULDED		34	0
DEPTH	DO	12	0

SECT. 33 PARA. 5 TO BE COMPLIED WITH.



DETAIL OF TOP PINTLE.  
SCALE 3" = ONE FOOT.



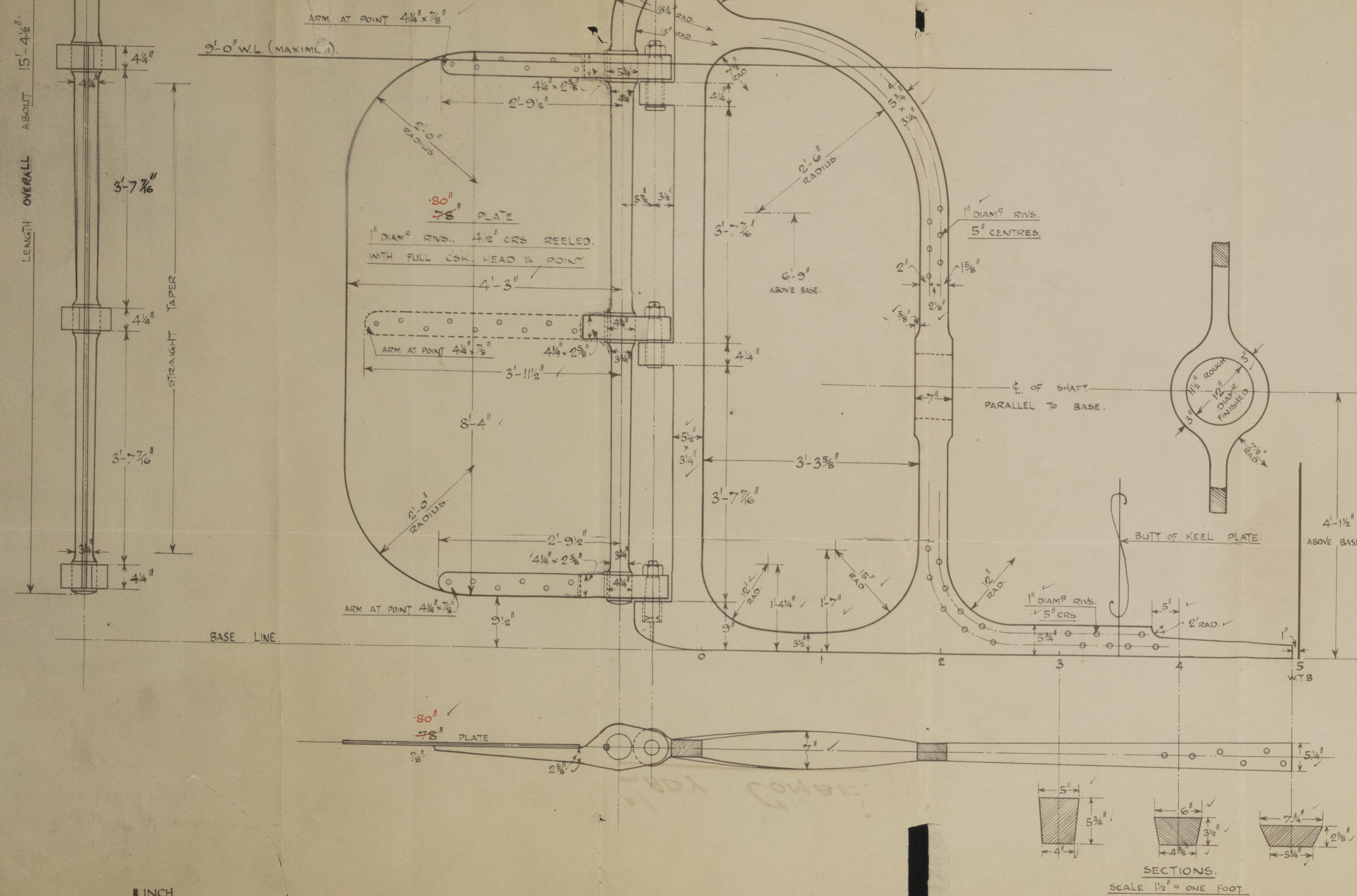
DETAIL OF LOWER PINTLE.  
SCALE 3" = ONE FOOT.

∴ DIAMETER OF RUDDER HEAD =  $4\frac{1}{4}$ "

SPEED NOT EXCEEDING 8 KNOTS

MATERIAL - BEST FORGED STEEL.  
TO LLOYDS TESTS & INSPECTIONS.

APPROVED  
LLOYDS REGISTER OF SHIPPING  
Montgomery & Co. per H. H. H. H.  
DATE 8. 12. 1911



SCALE  $\overline{\text{---}}^{\text{INCH}} = \text{ONE FOOT.}$

STIRNIPOST & RUIDDER N<sup>o</sup> 929

LOBNITZ & C<sup>o</sup> L<sup>TD</sup>, RENFREW  
N<sup>o</sup> 929  
DRAWN BY J. A. Miller  
CHECKED BY J. A. Miller  
DATE 29<sup>th</sup> November, 1926.

DWVC NO S 3356



LOBNITZ & Co  
STERNPOST & RUPPEL  
N<sup>o</sup> 929 (approved)  
(approved)

"LADY COMBE."

GLASGOW REPORT No. 47324



© 2021

Lloyd's Register  
Foundation

014738-014750-0152