

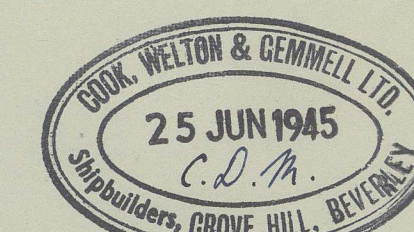
DRAWING No 4.

YARD Nos 762 to 765.

STERNFRAME AND RUDDER.

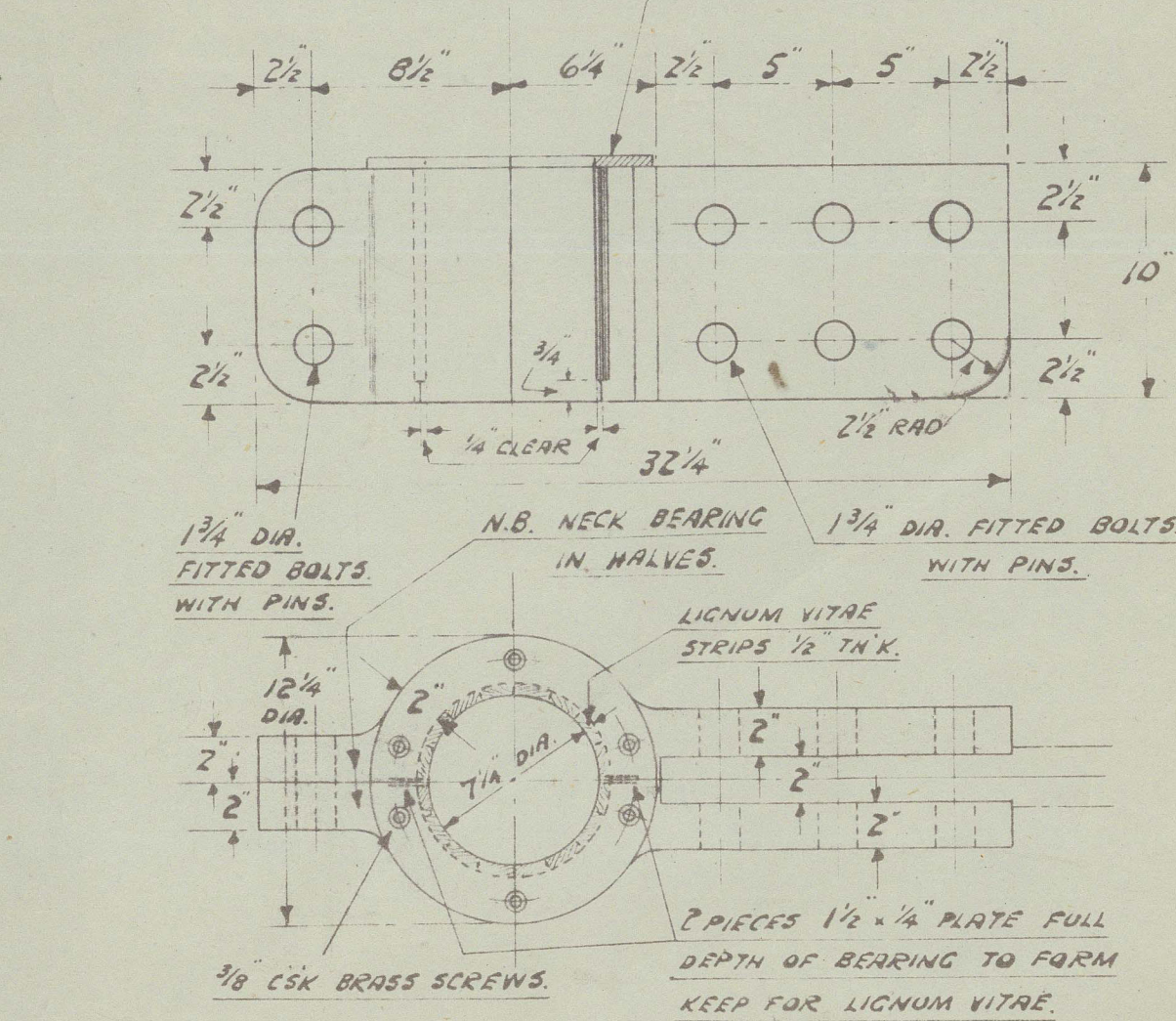
SCALES 1" = 1' FOOT.
DETAILS 1/2" = 1' FOOT
AS MARKED.

COOK, WELTON & GEMMELL LTD.,
SHIPBUILDERS,
BEVERLEY.



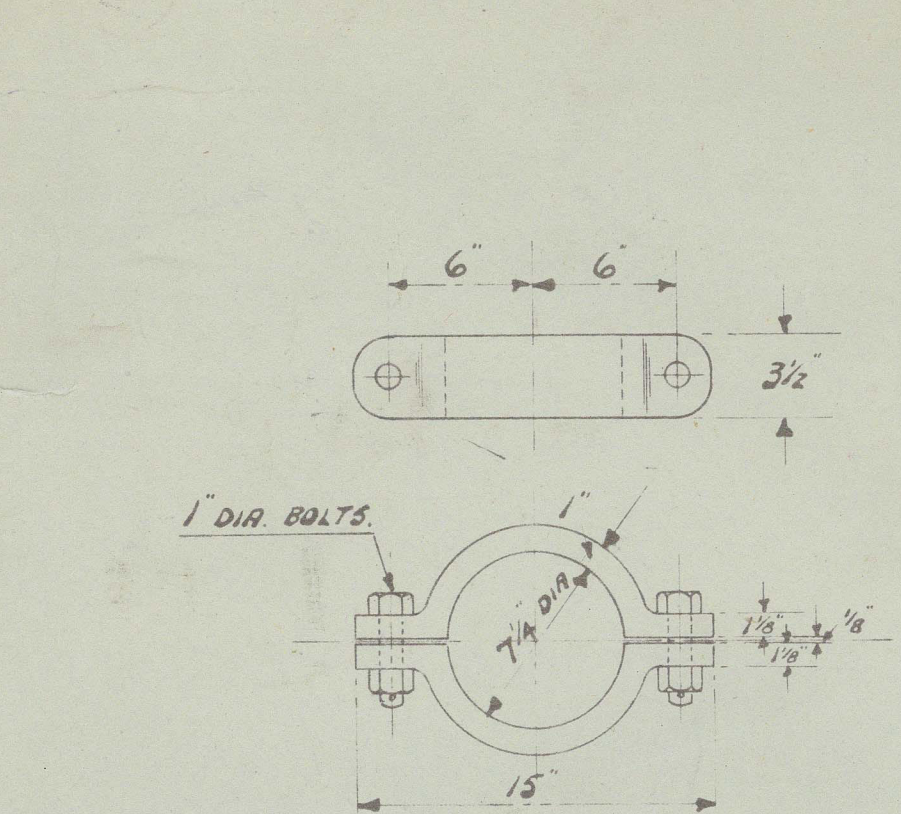
NOTES:-
B.S.1 NOTATION & SYMBOLS USED FOR WELDS, VIZ.
FILLET WELDS DENOTED BY Δ
ALL SIZES OF FILLET WELDS ARE LFC LENGTHS.
SINGLE VEE BUTT WELDS DENOTED BY ∇
BEVEL WELDS ∇

2 1/2" x 1/2" BRASS RING TO SECURE
LIGNUM VITAE.



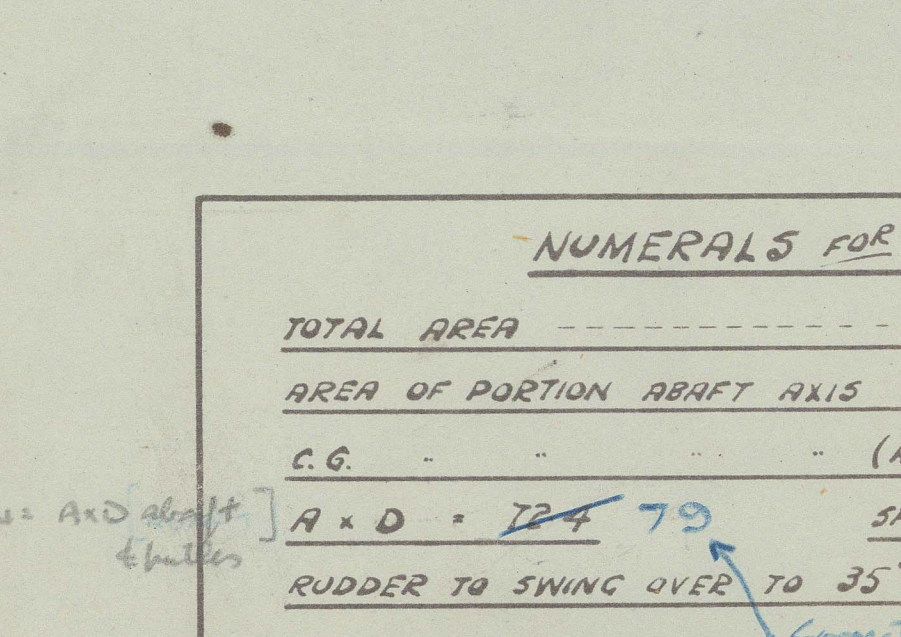
DETAIL OF NECK BEARING.

MATERIAL - CAST STEEL.



DETAIL OF LOCKING HEAD.

MATERIAL - CAST STEEL.



NUMERALS FOR RUDDER.

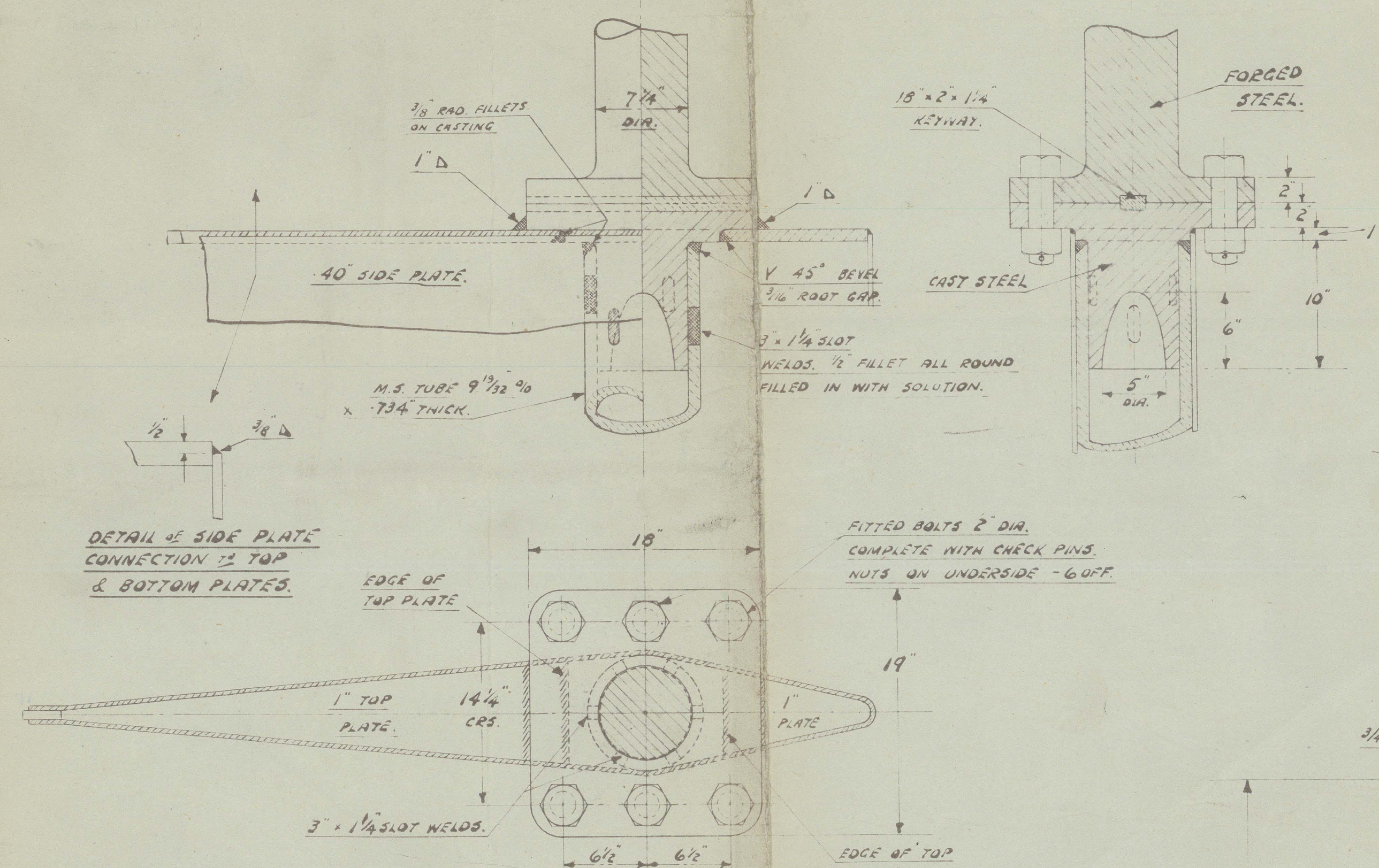
TOTAL AREA	5.51
AREA OF PORTION AHEAD AXIS	26.92
C.G.	1.19
A x D	79
SPEED	10 1/2 KNOTS
RUDDER TO SWING OVER TO 35° EACH SIDE OF C.	Connected AD

AND about 1/2 fathoms = 410 x 7.19 = 29.8
AND found " = 1414 x 7.5 = 10.8
Connected A x D = 79.0
Rule check = 5/4"

RUDDER & STERNFRAME OF FABRICATED MILD STEEL (OR AS INDICATED).

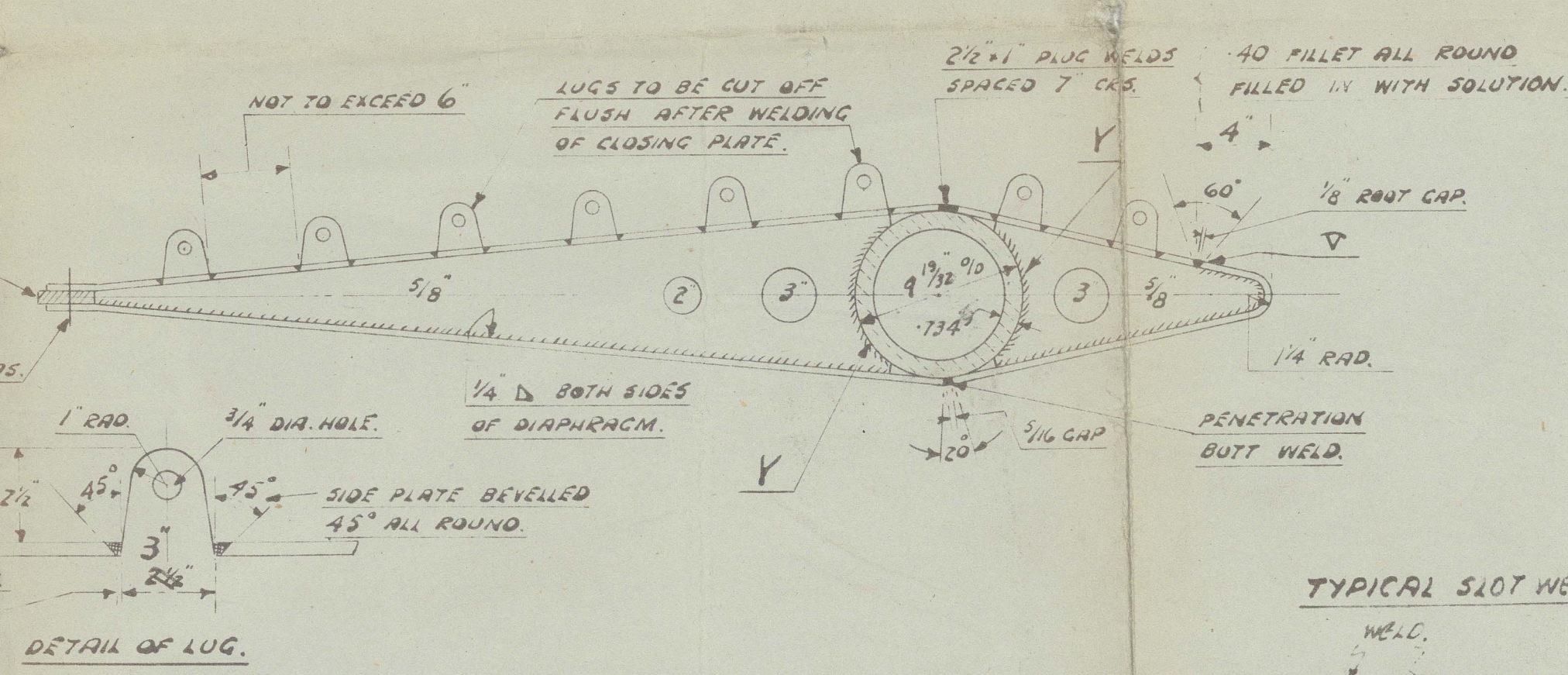
TO LLOYDS REQUIREMENTS & TESTS.

APPROVED BY LLOYDS 26/5/45.

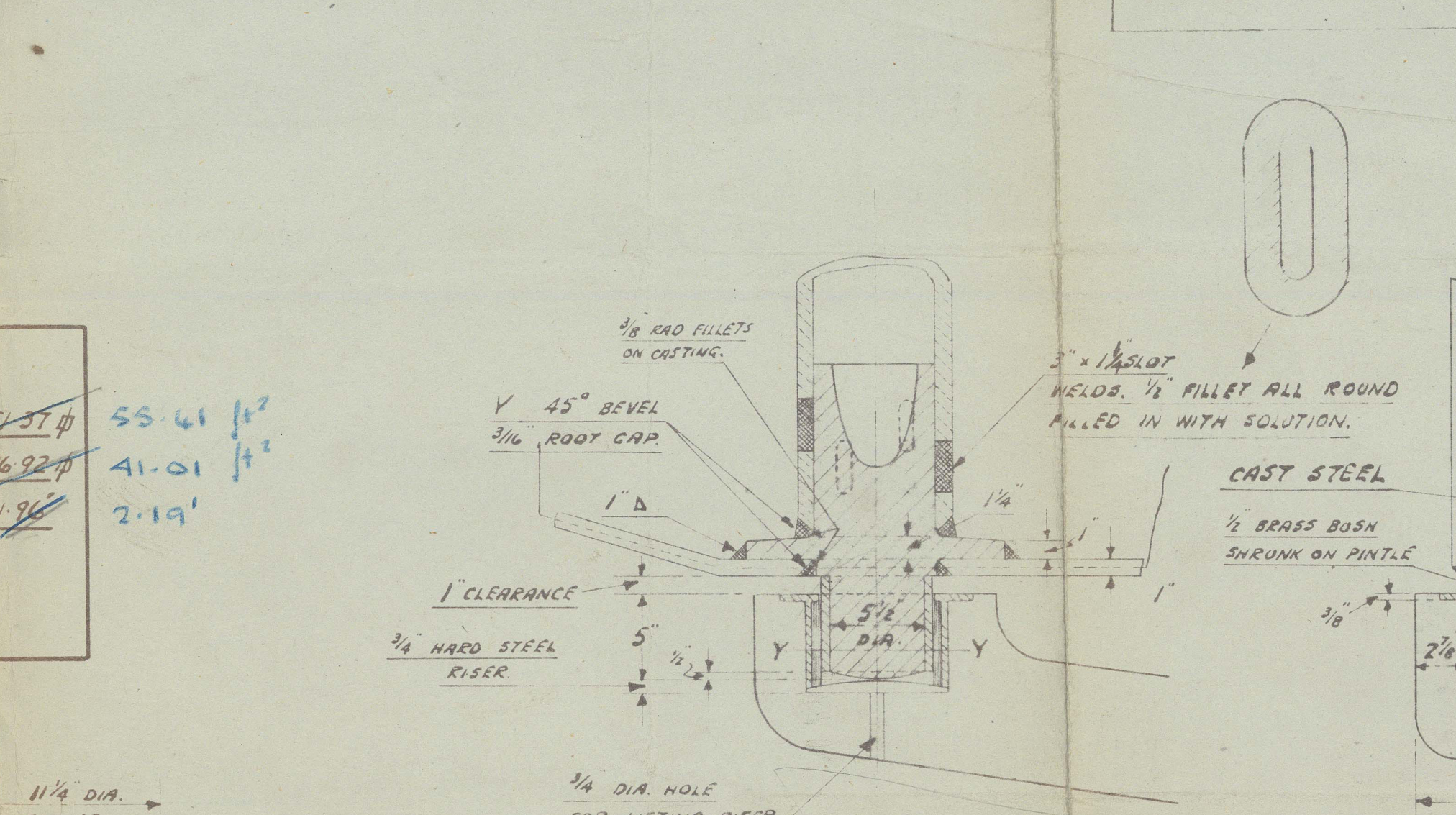


DETAILS AT TOP OF RUDDER

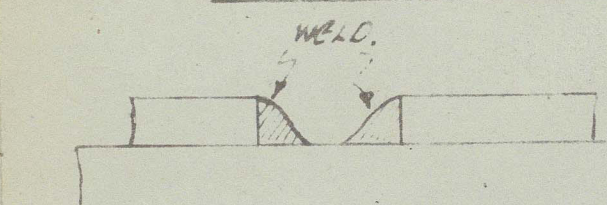
SHOWING COUPLING ETC.



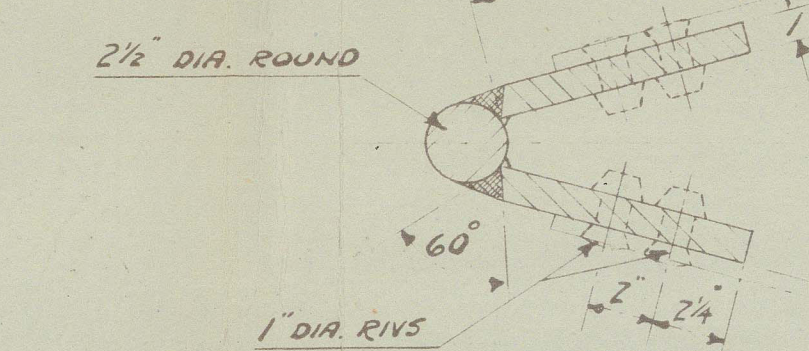
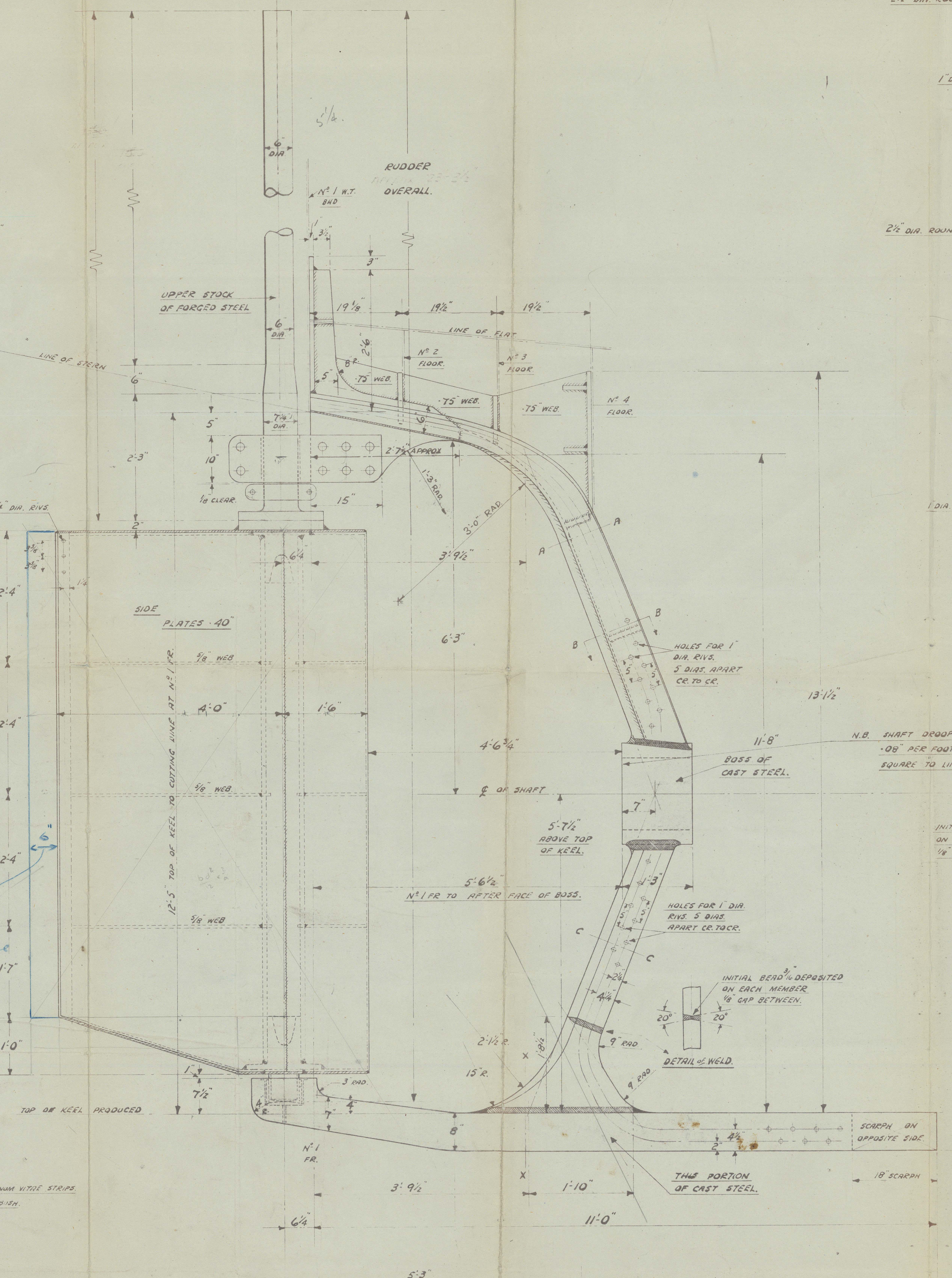
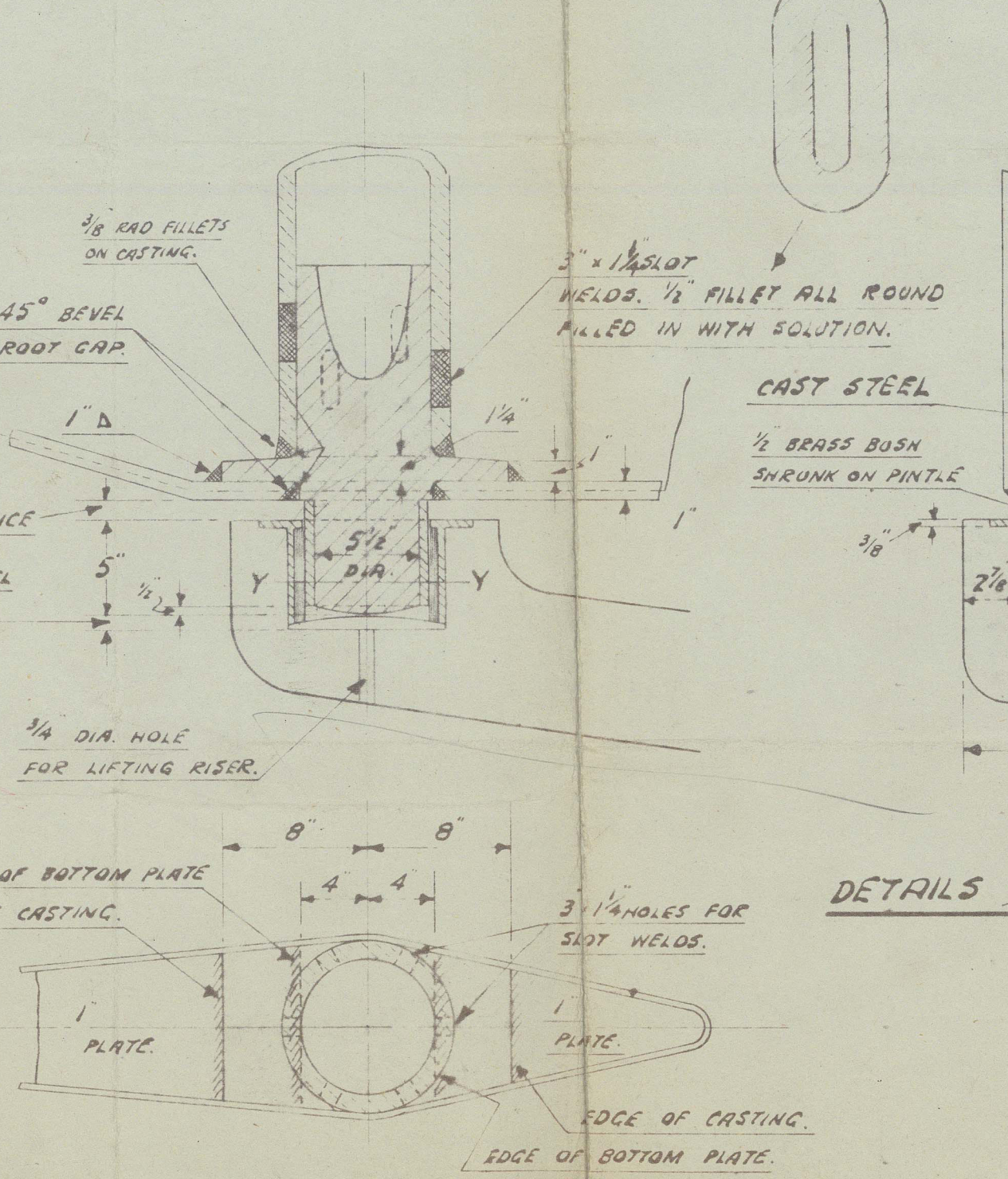
SECTION IN WAY OF DIAPHRAGM PLATE.



TYPICAL SLOT WELD.

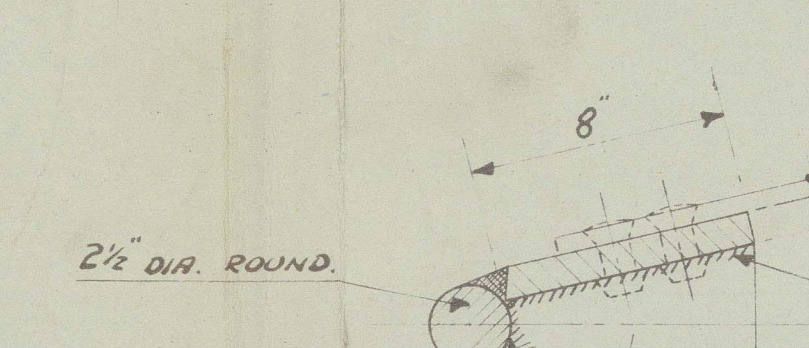


DETAILS OF BOTTOM BEARING.



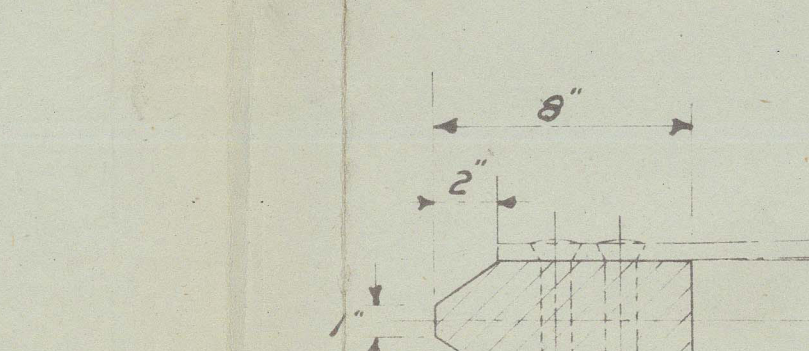
SECTION A-A.

SCALE 2" = 1 FT.



SECTION B-B.

SCALE 2" = 1 FT.

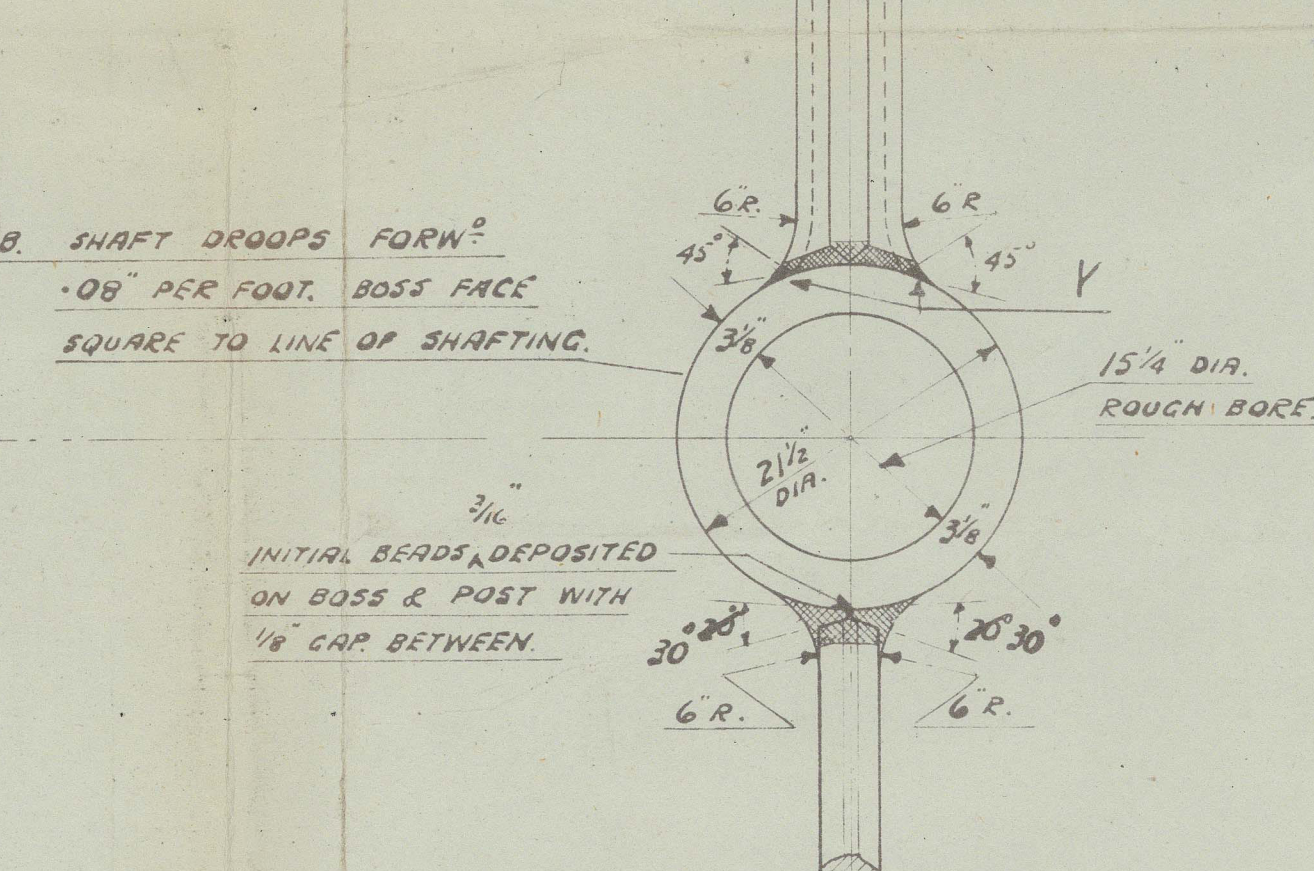


SECTION C-C.

SCALE 2" = 1 FT.

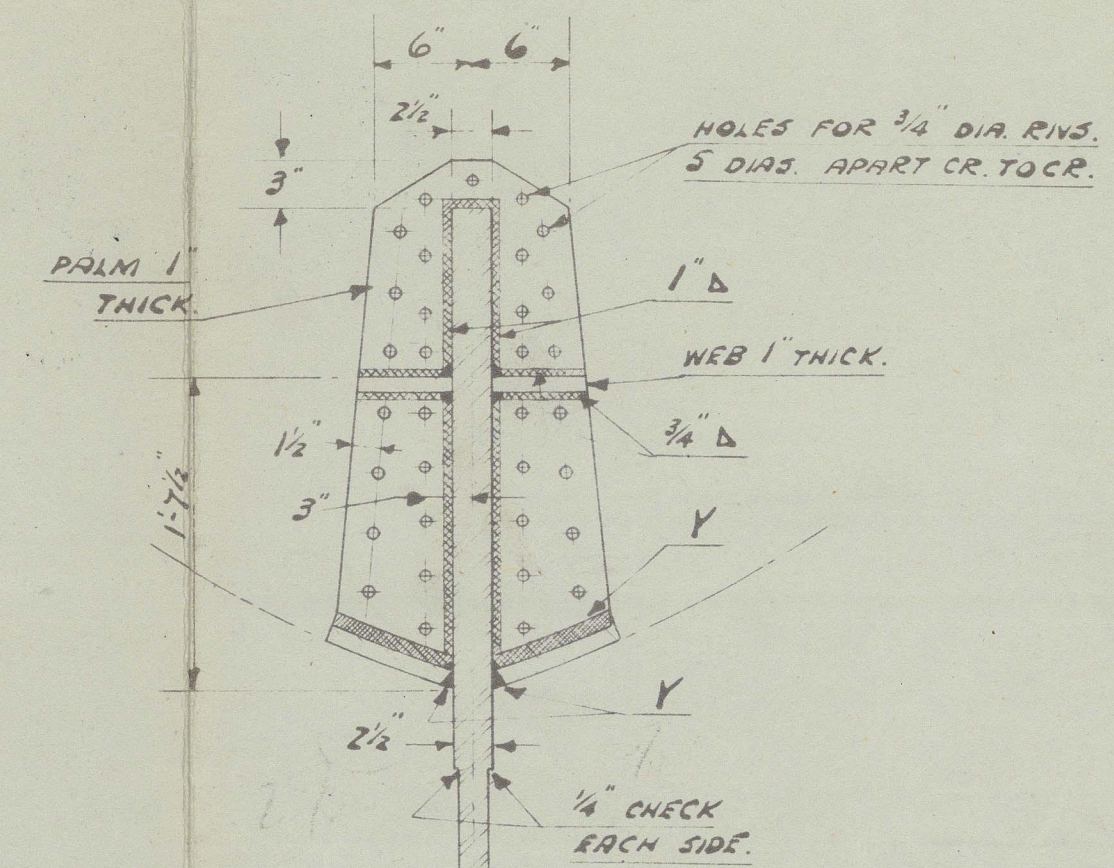
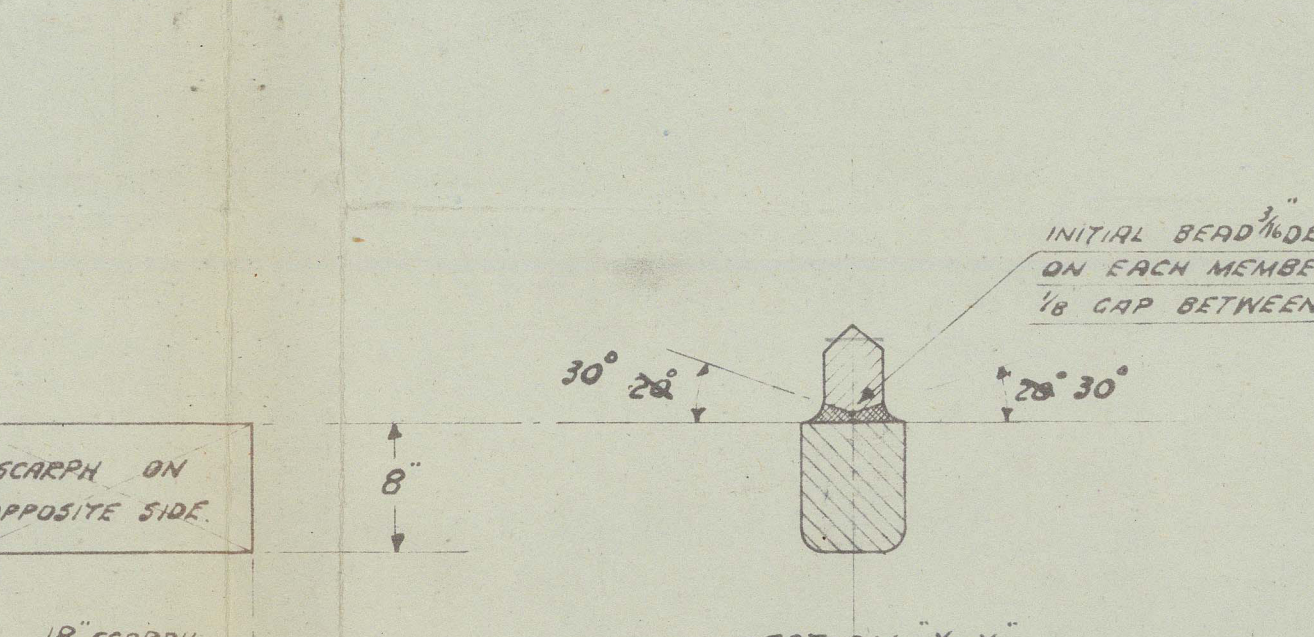
AFT SIDE OF BOSS.

LOOKING FORWARD.



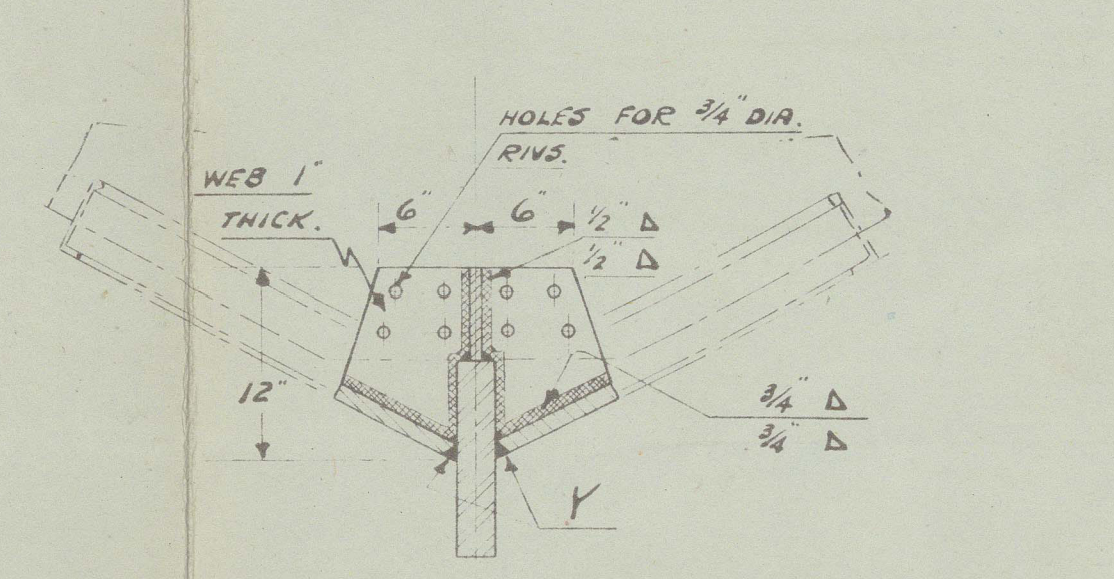
SECTION X-X.

LOOKING FORWARD.



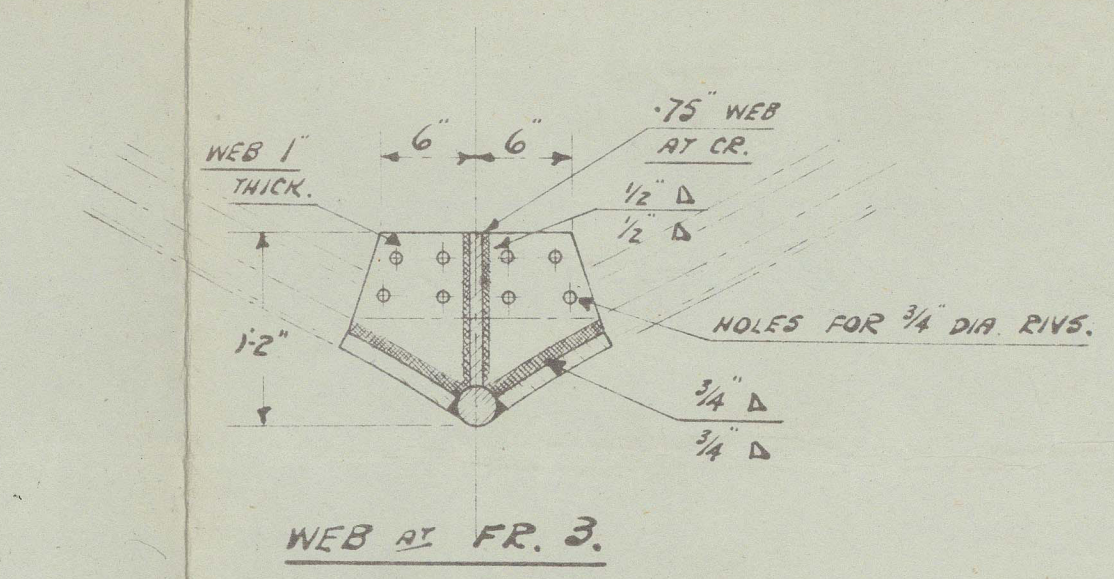
PALM ON FR. 1.

LOOKING AFT.



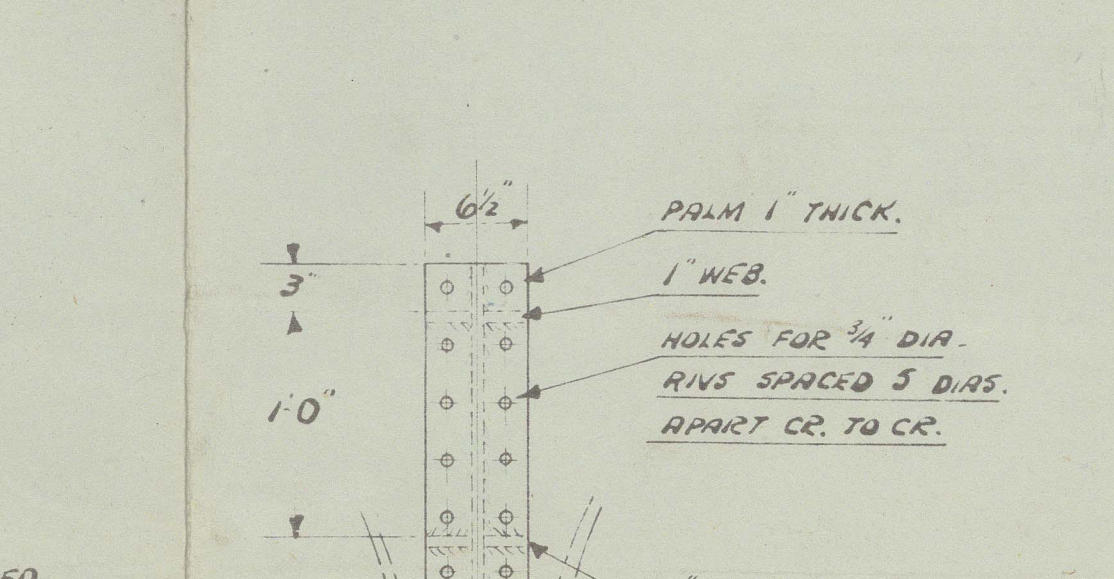
WEB AT FR. 2.

LOOKING AFT.



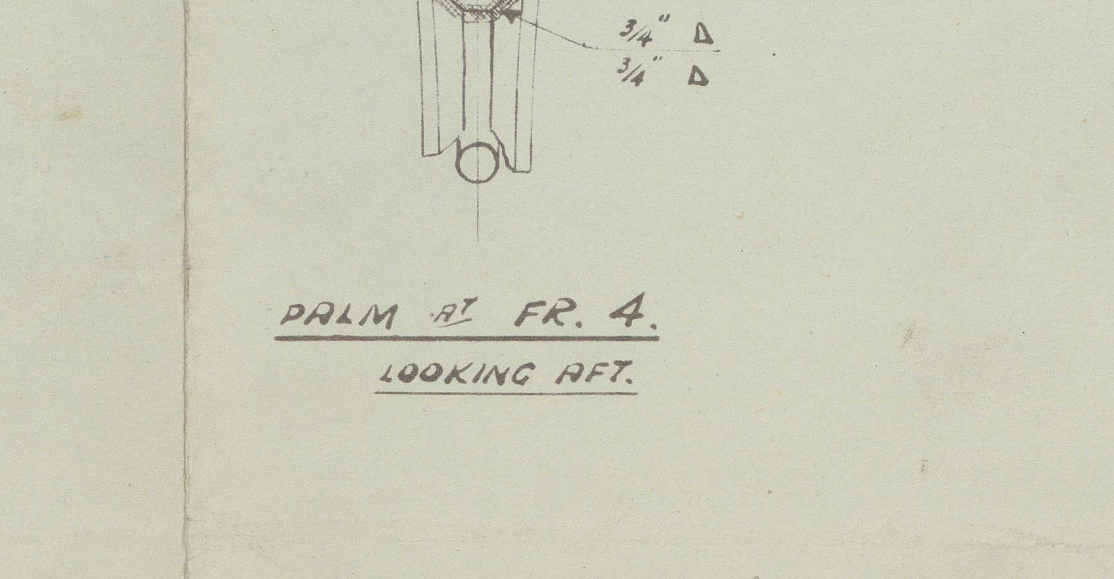
WEB AT FR. 3.

LOOKING AFT.

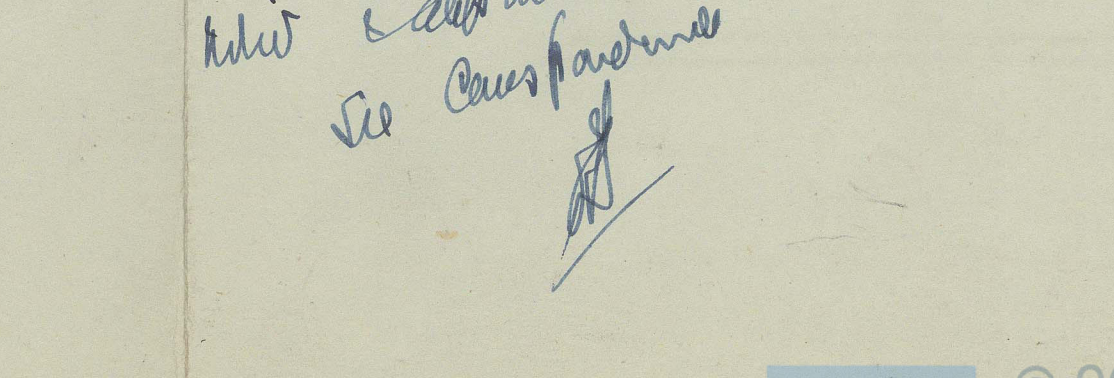


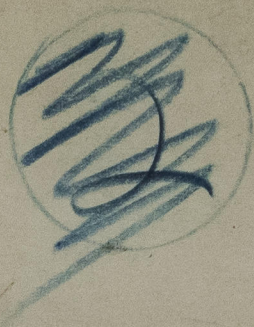
PALM AT FR. 4.

LOOKING AFT.



DETAILS OF BOTTOM BEARING.





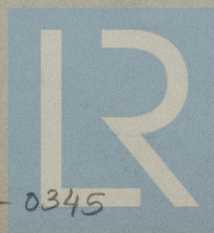
5

"Borella" *

Wise Shop

COOK WELTON & GEMM
YARD No 762-765

STERNFRAME & RUDDER



© 2021

Lloyd's Register
Foundation

014695-014703-0345