

N^o 1032 & 1034

MIDSHIP SECTION

DIMENSIONS - 210'0" x 34'0" x 16'6"

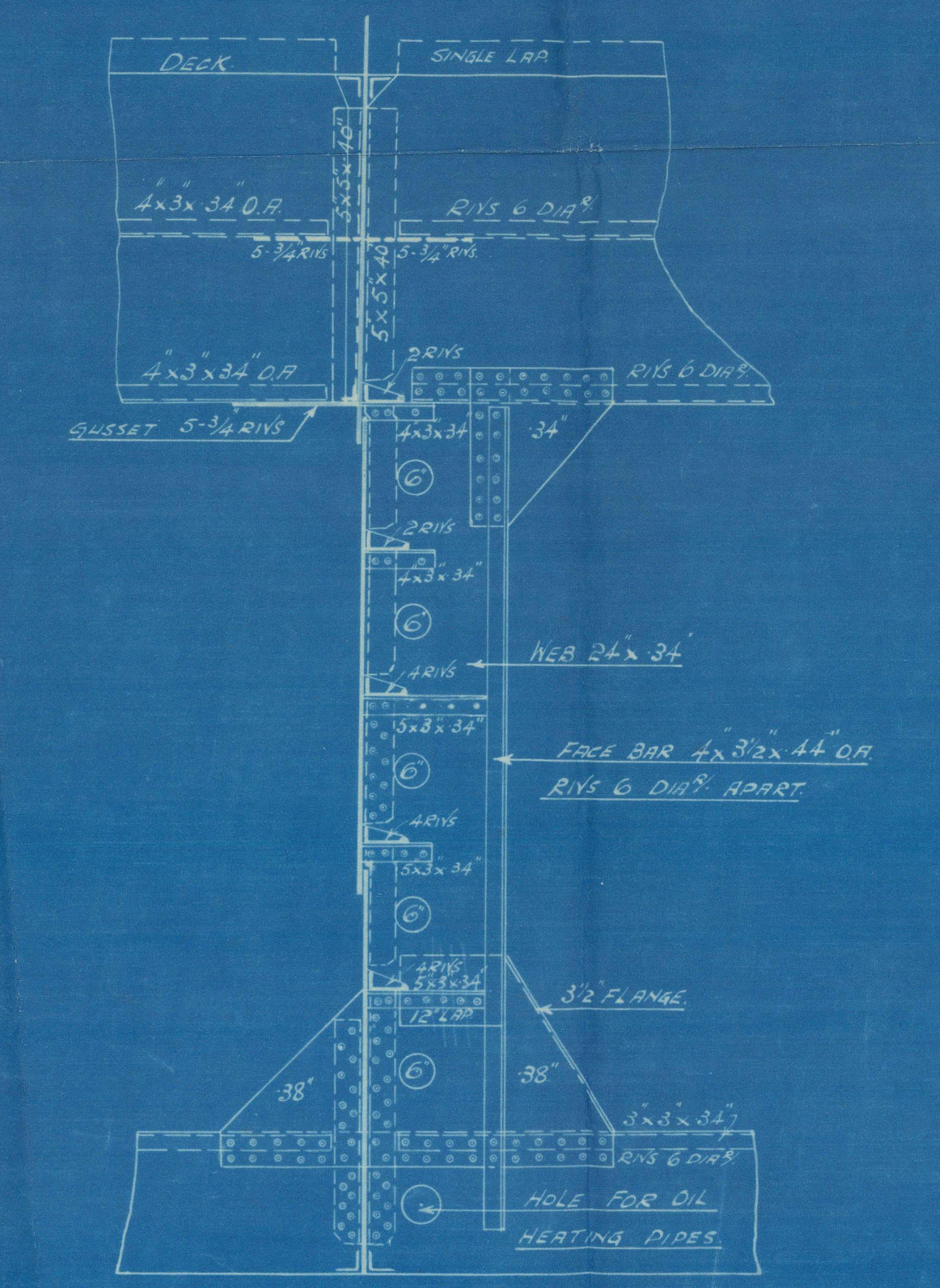
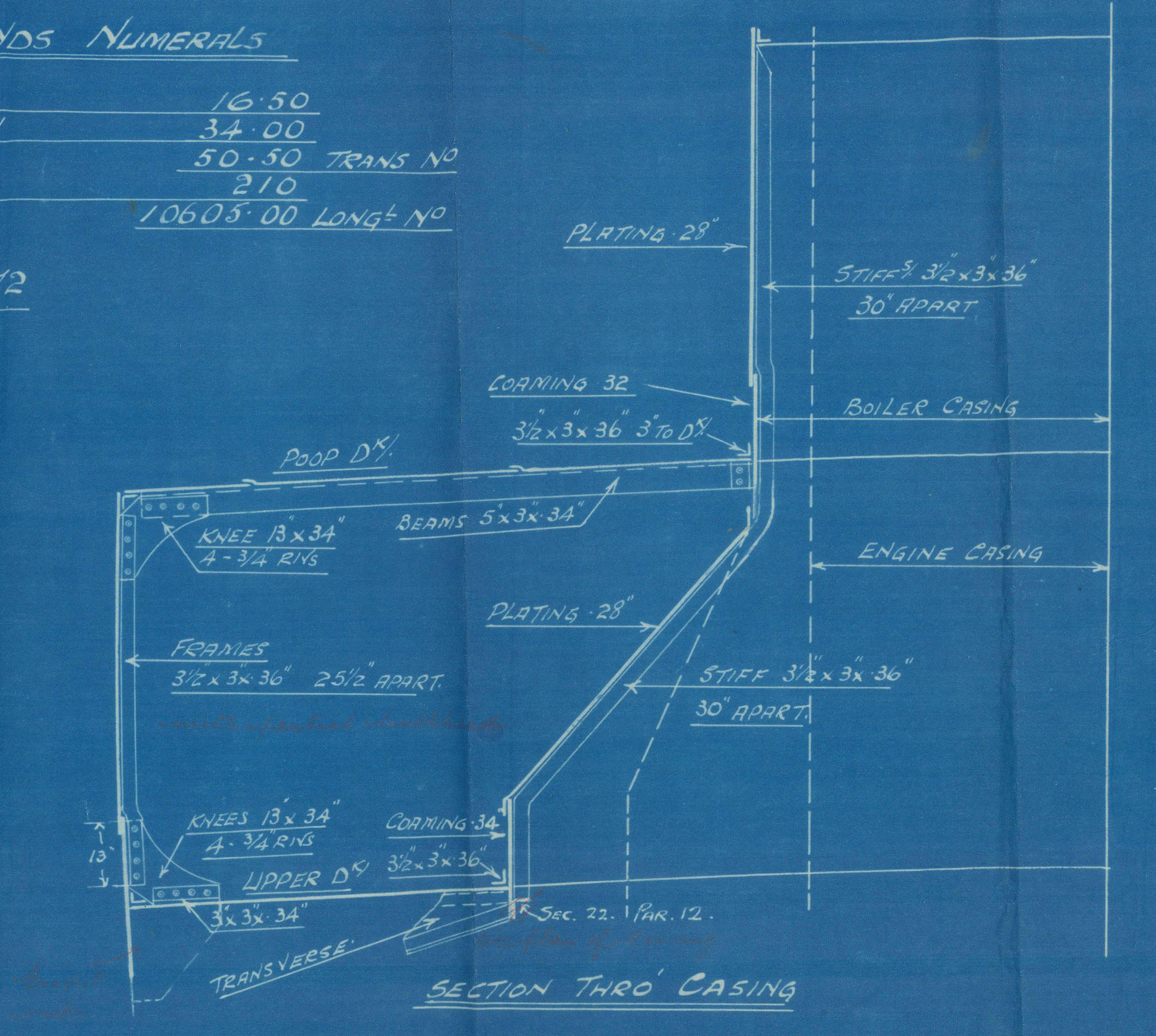
"ISHERWOOD SYSTEM" PATENT

SCALE 1/2" = 1 FOOT

LLOYDS NUMERALS

DEPTH	16'50
BREADTH	34'00
LENGTH	50'50 TRANS NO
	210
	10603'00 LONG th NO

$$\frac{L}{B} = 12.72$$



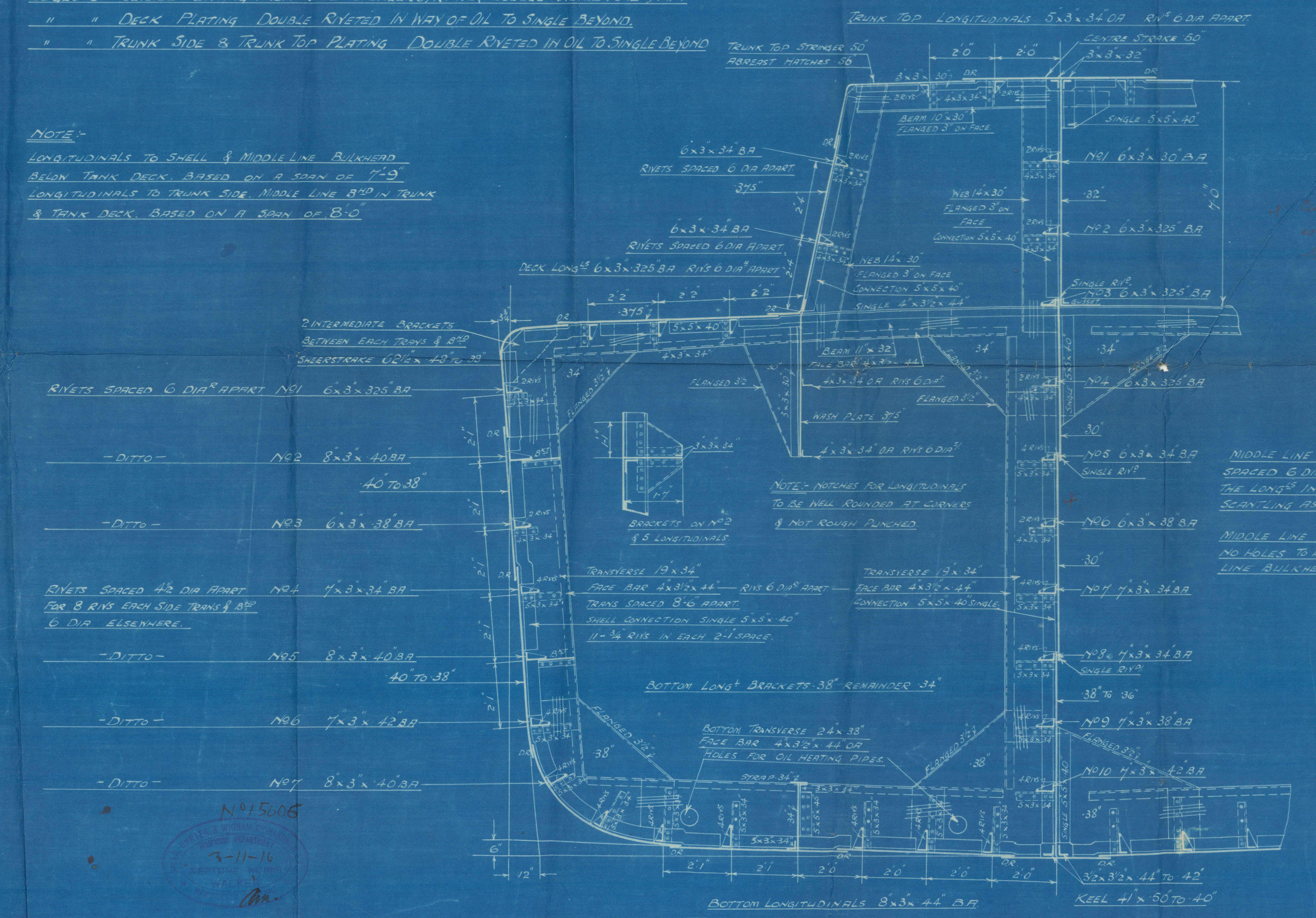
ELEVATION OF NEB
8'0" FROM CENTRE LINE

RIVETING

- KEEL BUTTS, QUADRUPLE RIVETED OVERLAPS FORE & AFT.
- BOTTOM & BULGE PLATING BUTTS, TREBLE OVERLAPS TO DOUBLE.
- SIDE PLATING BUTTS, TREBLE OVERLAPS IN OIL SPACE TO DOUBLE AT ENDS.
- SHEERSTRAKE BUTTS, QUAD. OVERLAPS FOR 1/2 L. TREBLE FOR 3/4 L TO DOUBLE AT ENDS.
- DECK PLATING BUTTS, DOUBLE OVERLAPS IN OIL TO SINGLE BEYOND.
- TRUNK SIDE PLATING BUTTS, DOUBLE OVERLAPS IN OIL TO SINGLE BEYOND.
- TRUNK TOP STRINGER BUTTS, TREBLE OVERLAPS TO DOUBLE.
- TRUNK DECK PLATING BUTTS, DOUBLE OVERLAPS.
- EDGES OF OUTSIDE PLATING FROM KEEL TO SHEERSTRAKE, DOUBLE RIVETED FORE & AFT.
- " " DECK PLATING DOUBLE RIVETED IN WAY OF OIL TO SINGLE BEYOND.
- " " TRUNK SIDE & TRUNK TOP PLATING DOUBLE RIVETED IN OIL TO SINGLE BEYOND.

NOTE-

LONGITUDINALS TO SHELL & MIDDLE LINE BULKHEAD
BELOW TANK DECK BASED ON A SPAN OF 7'-9"
LONGITUDINALS TO TRUNK SIDE, MIDDLE LINE 8'-0" IN TRUNK
& TANK DECK BASED ON A SPAN OF 8'-0"



MIDDLE LINE BULK^{hd} LONGth RIVETS
SPACED 6 DIA^s APART THROUGHOUT
THE LONGth IN PUMP ROOM, THE SAME
SCANTLING AS IN OIL TANKS

MIDDLE LINE BULKHEAD NOT OIL TIGHT
NO HOLES TO BE PUNCHED IN MIDDLE
LINE BULKHEAD

NOTE

THICKNESS OF SIDE & BOTTOM PLATING IN WAY
OF TRANSVERSE FRAMING TO BE ON THE BASIS
OF 44" MIDSHIP TO 38" AT ENDS.

SECRET AND CONFIDENTIAL

N^o 15606
3-11-16
RECEIVED
NAVY DEPT
WASHINGTON

Trucks Report

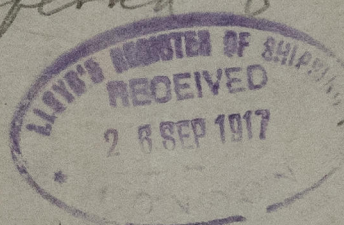
1032-1034

London 8/1/16

GLASGOW REPORT No. 37155

95 Birchhol

Transferred to



Boxal

Dir Sec 6 uppe

LLOYD'S REGISTER OF

~~W. 146 L.S.~~

M/S.

014666-014674-0175

© 2021



Lloyd's Register
Foundation