

SERVICEMAN

# PROFILE & DECK PLAN

DIMNS: 115'-0" B.P. • 27'-6" MLD • 13'-6" MLD.

TO CLASS Y-100A.I. FOR TOWING SERVICES

SCALE:  $\frac{1}{4}" = 1 \text{ FT.}$

SHIP NOS

3- APR 1944

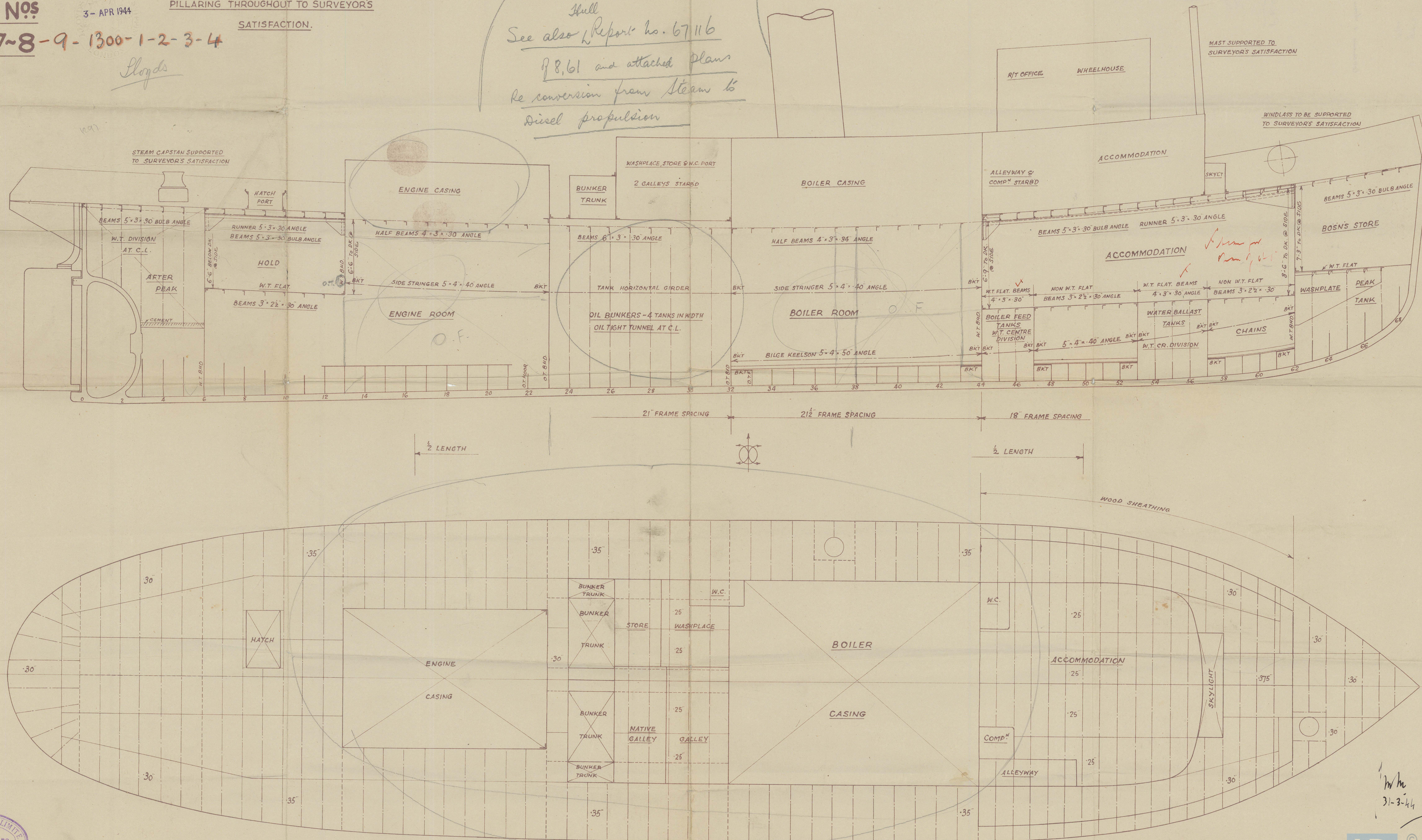
PILLARING THROUGHOUT TO SURVEYOR'S

SAISFACTION.

1297-8-9-1300-1-2-3-4

*Ploughs*

*Hull  
See also Report no. 67116  
of 8.61 and attached plans  
Re conversion from Steam to  
Diesel propulsion*





Hull F.E. Rpt. Nos.

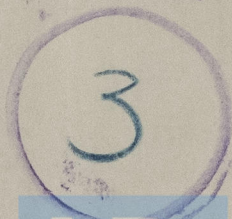
Empire	Flora		53089
"	Stella	WIN "SERVICEMAN"	53154
"	Sheila		53171
"	Elara	NW. AIRMAN	53172
"	Martha		53200
"	Vera		53250
"	Greta		53312
"	Vina		53433

Cochrane + Sons yard nos. 1294/8/9/1300/1/2/3/4

~~\*~~ AIRMAN

PROFILE + DECK.

RECORDS DEPT.  
LONDON



© 2021 FLEMAN

Lloyd's Register  
Foundation

014654 - 014665 - 0187