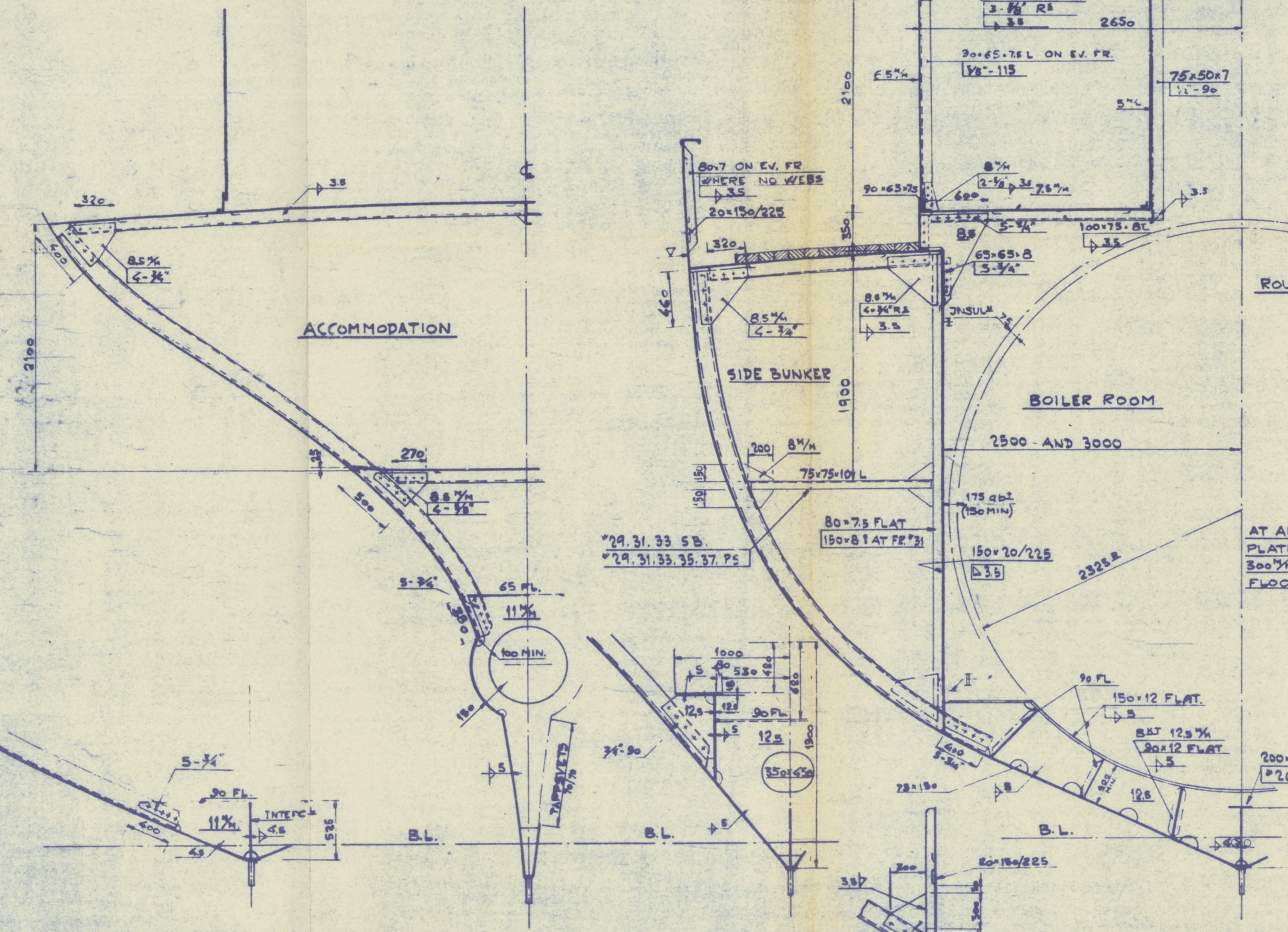


DET A
BAR KEEL
1:2.5



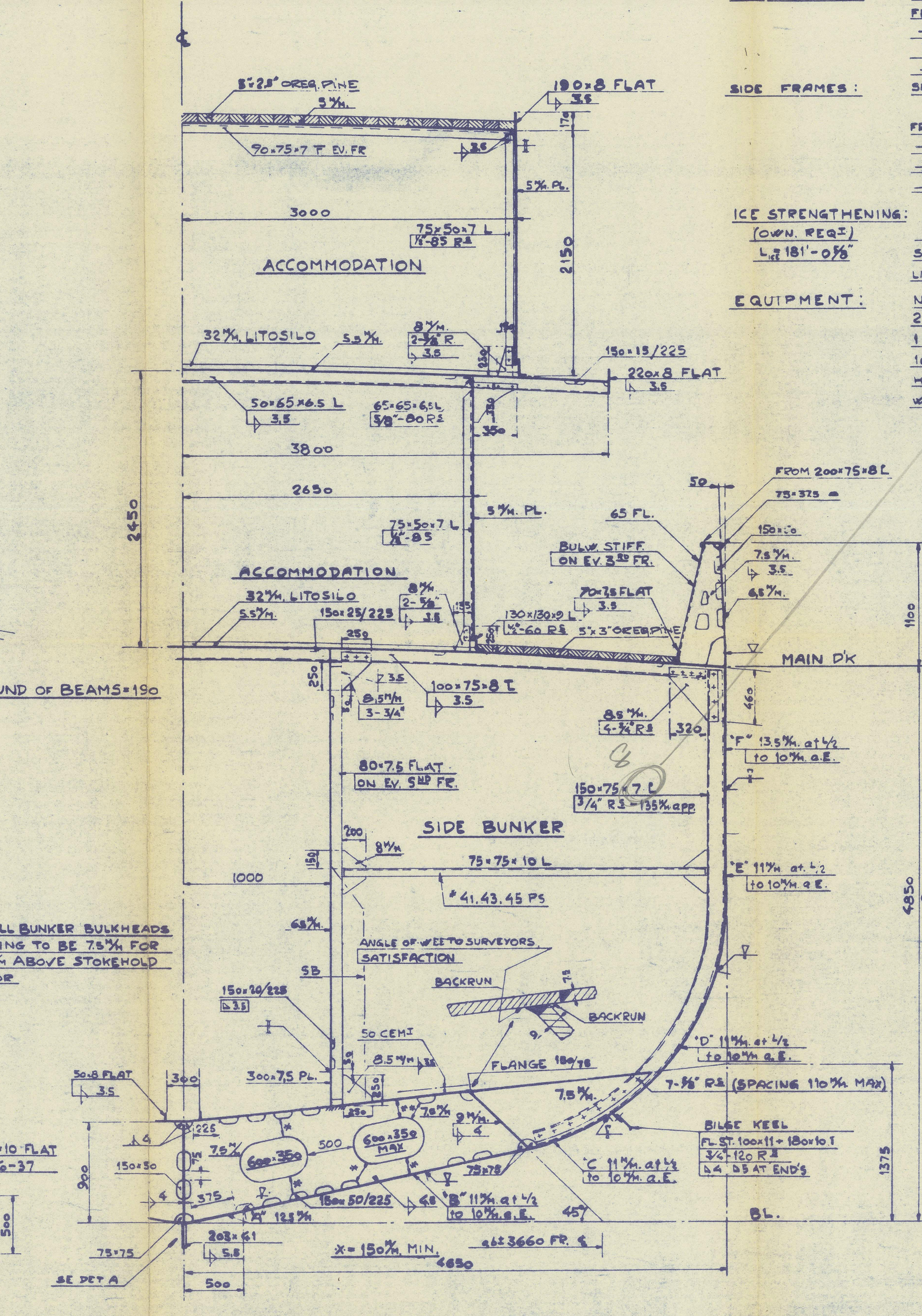
SECTION AT FR 29

SECTION AT FR 8

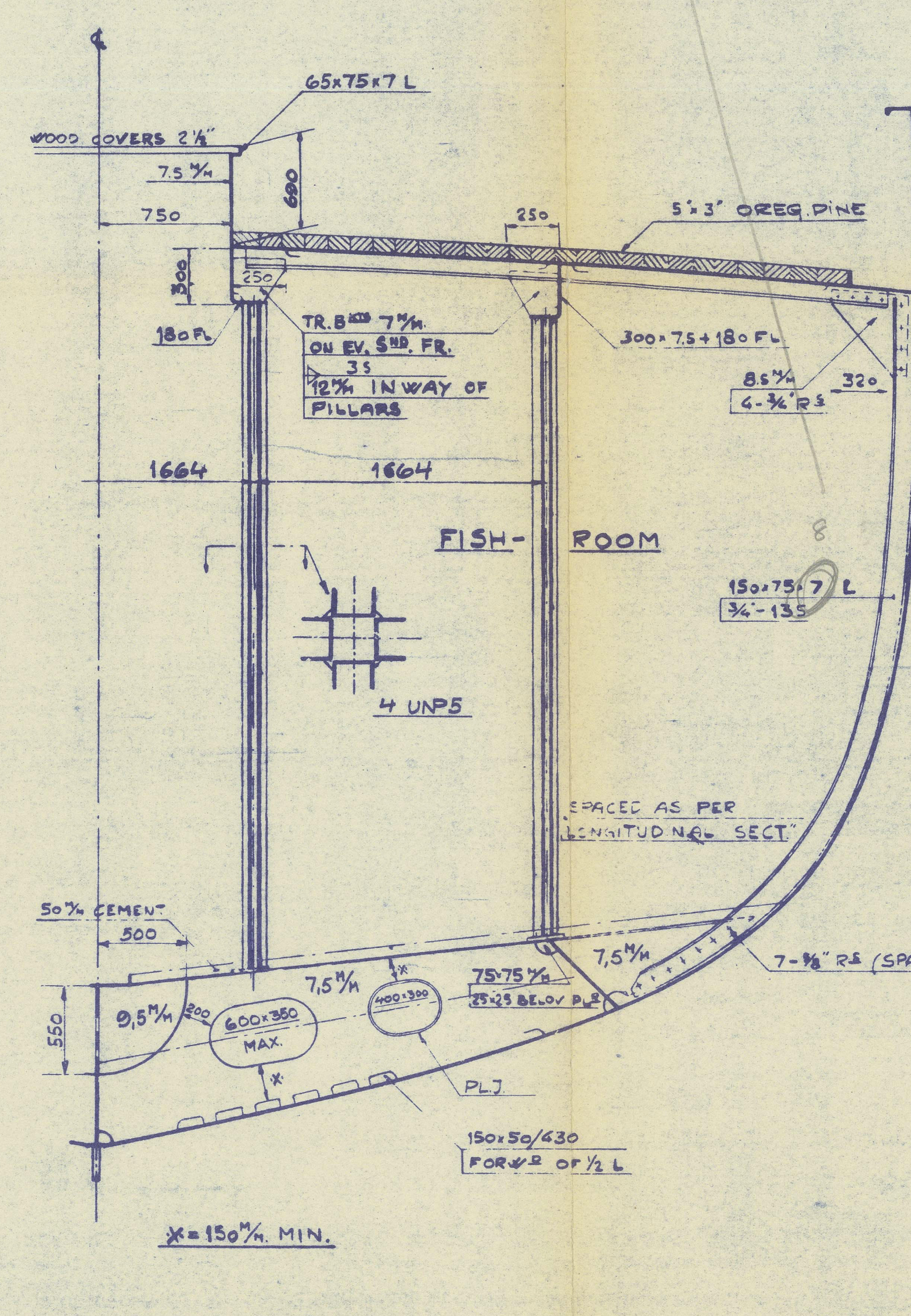
SECTION AT FR 17

SECTION AT FR 28

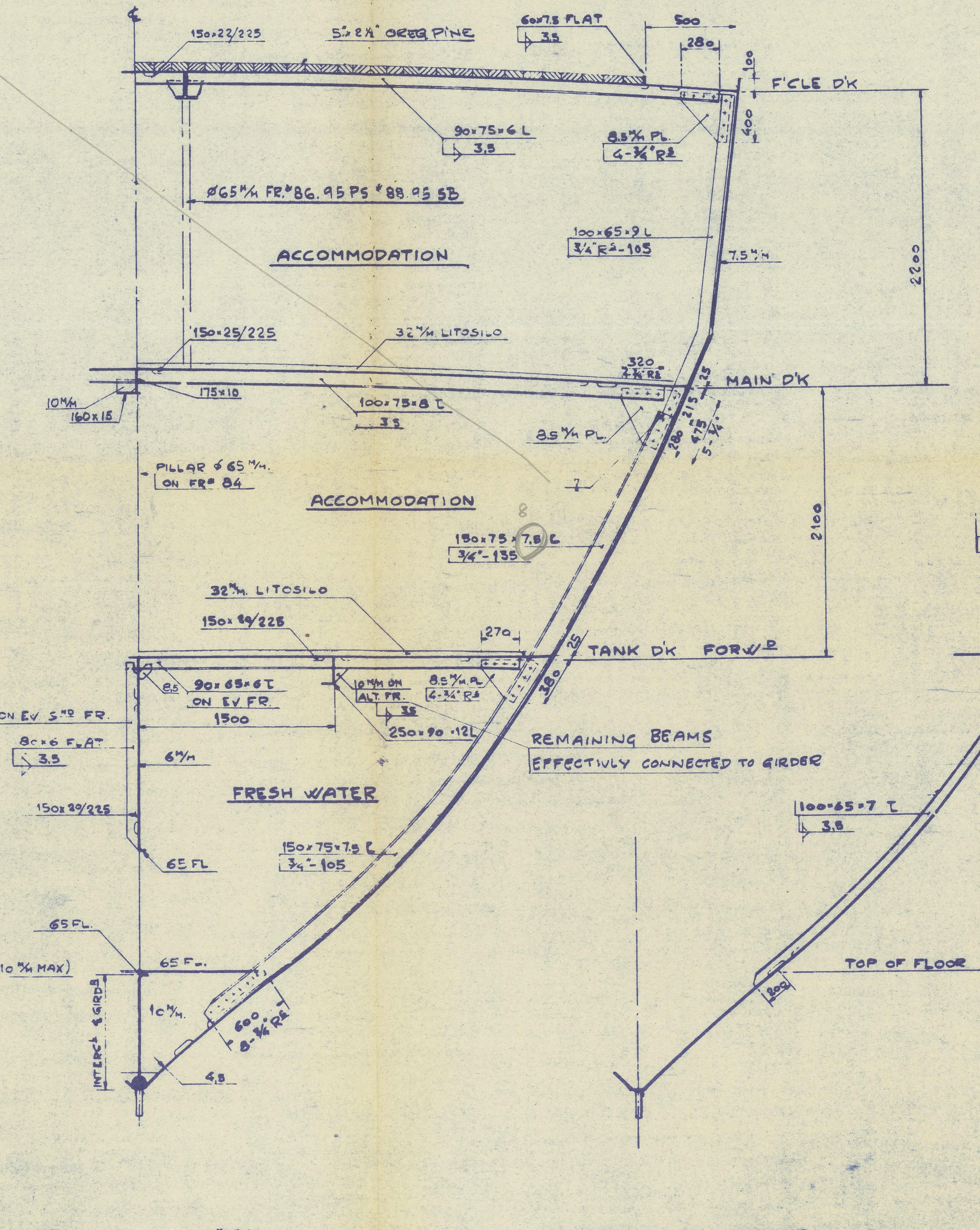
SECTION AT FR 29



SECTION AT FR 41



SECTION AT FR 66



SECTION AT FR 81

INTERMEDIATE FRAME

SCANTLING

DOUBLE BOTTOM:	TANKTOP PLATING 75% CENTRE GIRDER 900x9% MARGIN PLATE 720x9% OP. FLOORS ON EV. FR. 75% W.T. " 9.5%
OUTSIDE D.B.	CENTRE GIRDER INTA 800x10% FLOORS IN TANKS 10% " " BOILER RM 11% " " ENGINE 12.5x11% " " PEAKS 10% SPACING: APT OF 71 975% FORWARD 475%
SIDE FRAMES:	FRAMING IN AFTERPEAK 130x75x8 L " " BETW 8-9% 150x75x7 L " " 75-78 150x75x7 L " " 80-STEM 150x75x7.5 L
ICE STRENGTHENING:	INTERMEDIATE FRAMES FR 73 1/2 - 93 1/2 100x65x7 L (OWN REQ.) " " 94 1/2 - STEM 75x50x7 L L 181'-0 1/2
EQUIPMENT:	NUMERAL 8706, LETTER 'Z' 2 BOW ANCHORS STOCKLESS 15 CWTs EACH 1 KEDGE " " EX STOCK 5 165 FATHOMS 1 1/2" STUD. LINK CHAIN MIN. 15% CWTs HAWSEY 1 OFF 60 FATHOMS 2 1/4" CIRC. FLEXIBLE STEEL WIRE 6x12 THREADS WARP 1 " " 60 " " 2 1/4 " " " " (OWN. REQ.)

SIMFEROPOL (Yarkh Blus)

Yarkh Blus

DIMENSIONS:

LENGTH FROM FORESIDE OF STEM TO C. OF RUDDERSTOCK	194' - 8 1/2" = 59.85 M
BETWEEN PERPENDICULARS	180' - 5 1/2" = 55.00 M
BREADTH, MOULDED	30' - 6 1/2" = 9.30 M "B"
DEPTH	15' - 11" = 4.80 M "D"
LLOYD'S L	187' - 8 1/2" = 57.15 M

SCANTLING NUMERALS:

D=15.912'
L/D=2984

CLASS:

LLOYD'S REGISTER + 100A1 STEAM TRAWLER
(STRENGTHENED FOR NAVIGATION IN ICE AS
FOR MERCHANT VESSELS. OWNERS REQ.)
REQUIREMENTS OF SECTION 10 OF RULES FOR STEEL SHIPS
TO BE COMPLIED WITH.

STOCKHOLM REPORT No 10208
"Simferopol"

Isleult

AKTIEBOLAGET FINNBODA VARF STOCKHOLM	RITAN SHIP DATE GROSS
5/5 358 357 365 366	358/3
MIDSHIP - SECTION	

CORRECTED AS BUILT FOR 5/5 365 1/2-56 GL

CORRECTED AS BUILT FOR 5/5 358 1/2-55 NLL

014545-014555-0052