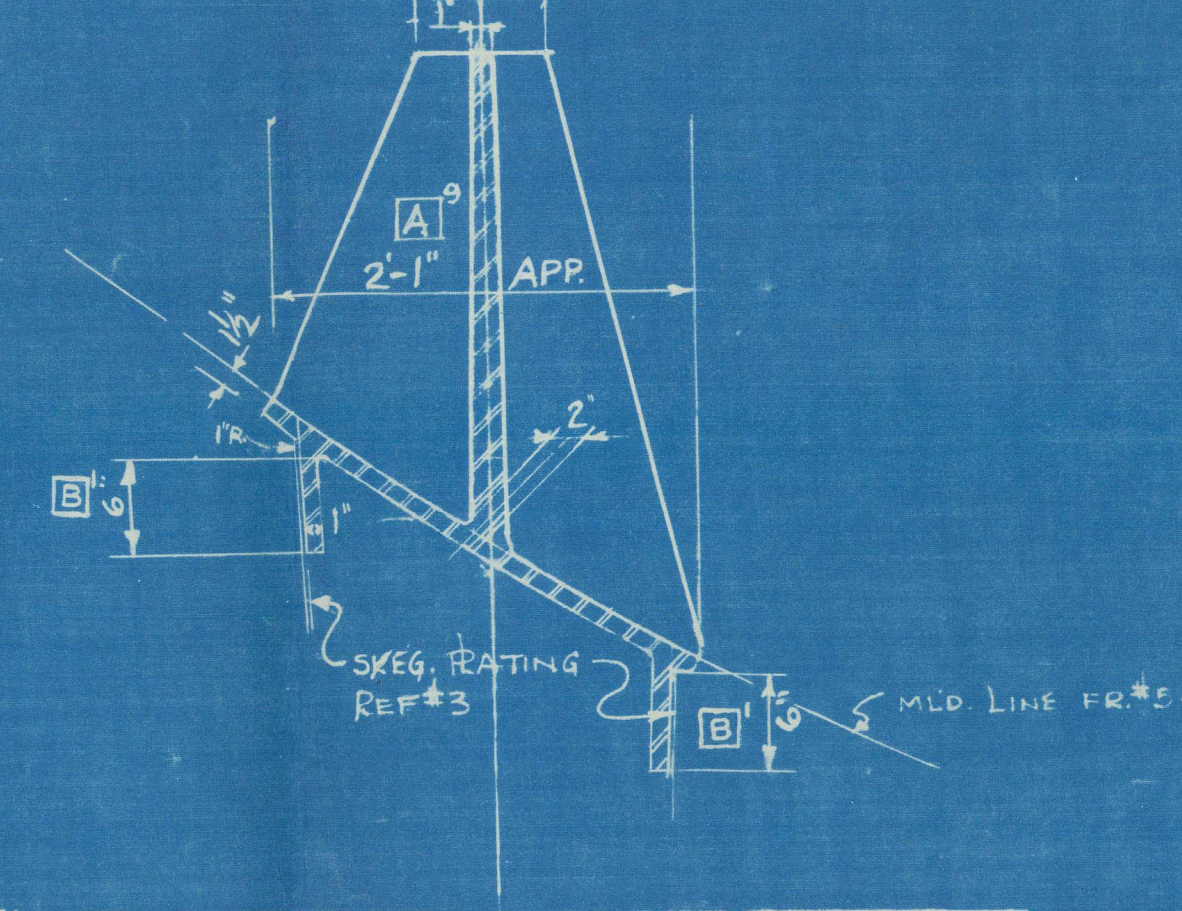
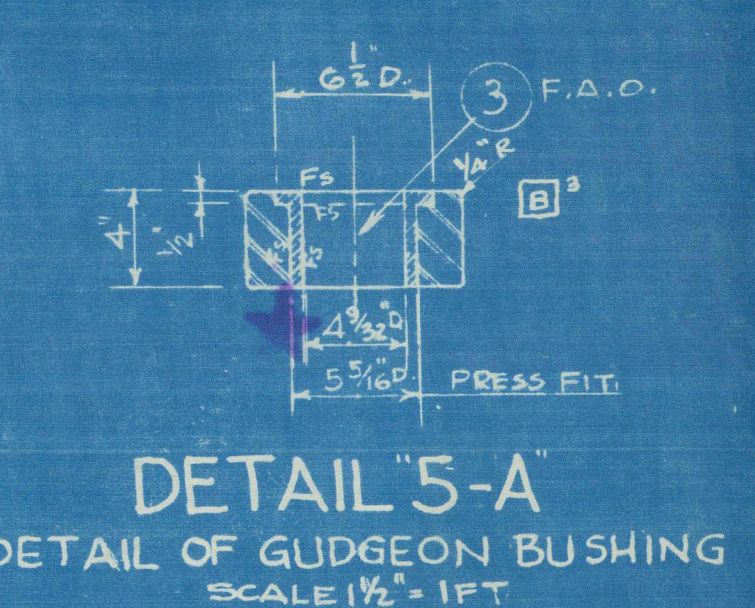


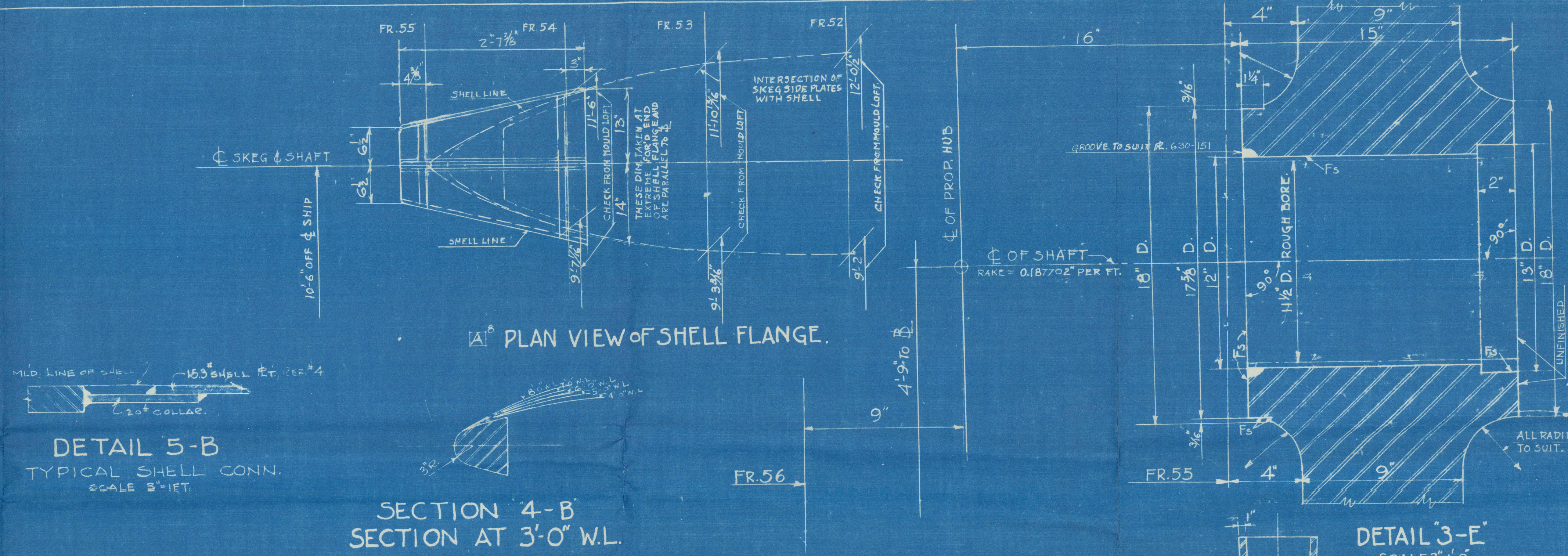
SECTION 6-A  
SECTION AT FR 55



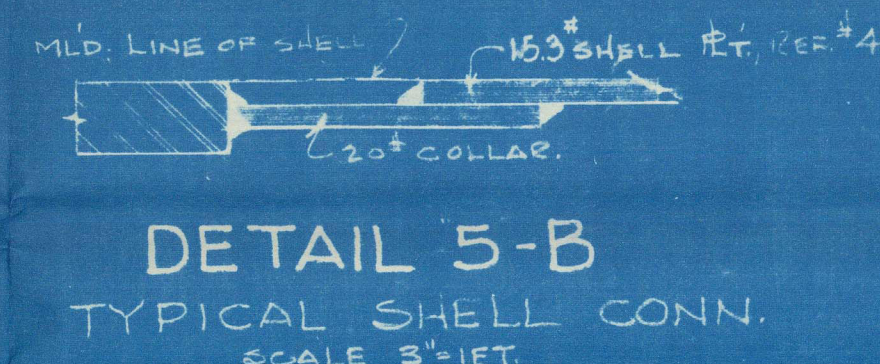
SECTION 6-B  
SECTION AT FR 54



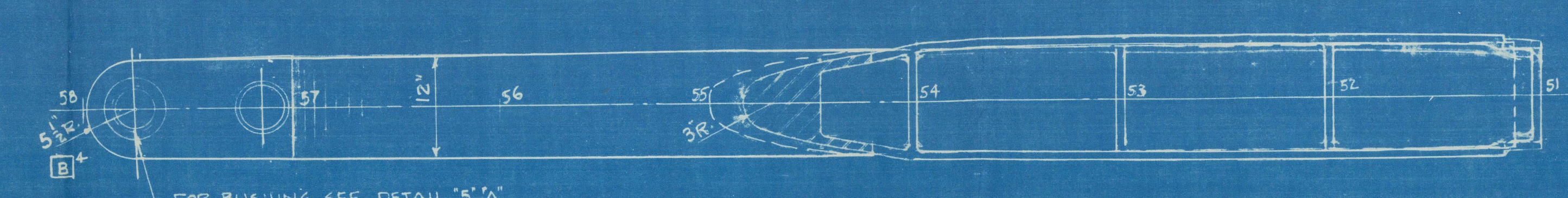
DETAIL 5-A  
DETAIL OF GUDGEON BUSHING  
SCALE 1 1/2" = 1 FT



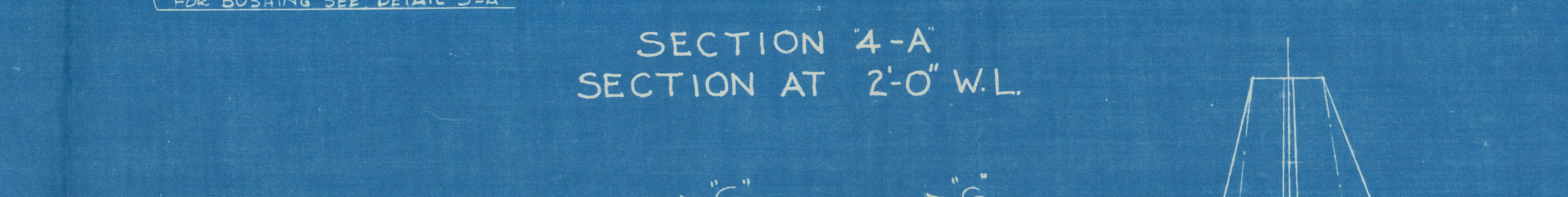
PLAN VIEW OF SHELL FLANGE



DETAIL 5-B  
TYPICAL SHELL CONN.  
SCALE 3" = 1 FT



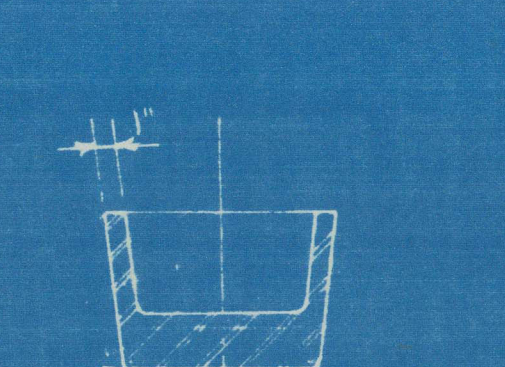
SECTION 4-B  
SECTION AT 3'-0" W.L.



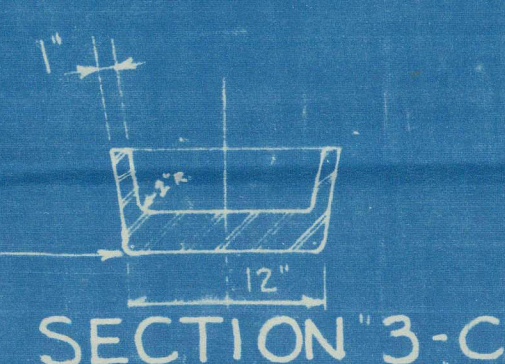
SECTION 4-A  
SECTION AT 2'-0" W.L.



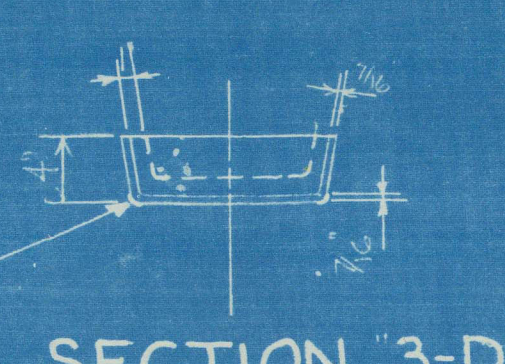
SECTION 3-E  
SECTION AT FR 54



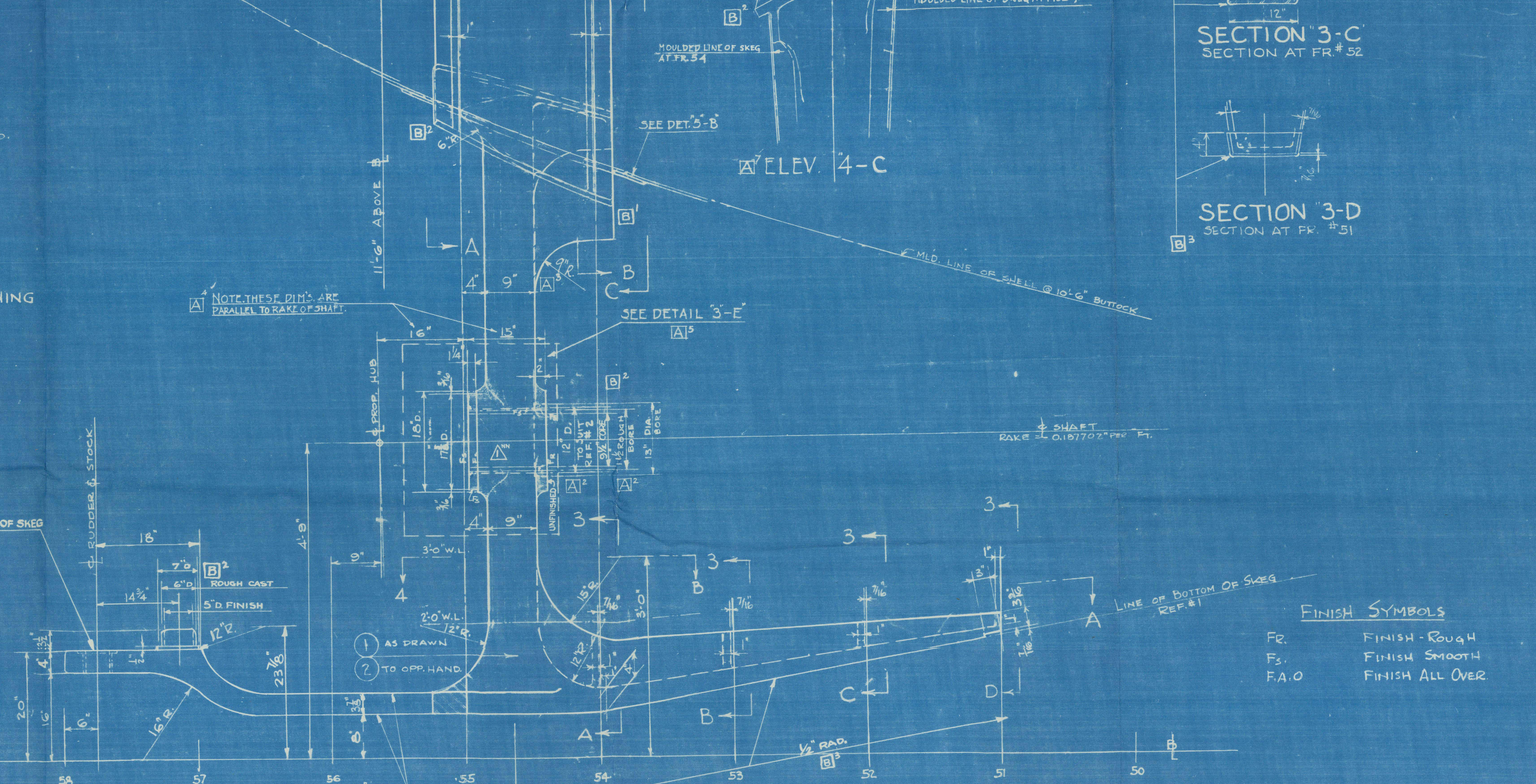
SECTION 3-B  
SECTION AT FR 53



SECTION 3-C  
SECTION AT FR 52



SECTION 3-D  
SECTION AT FR 51



ELEVATION  
STERN FRAME CASTING  
SCALE 1" = 1 FT

NOTE: FR. SPACING = 2'-4"

FINISH SYMBOLS  
FR. FINISH: ROUGH  
FR. FINISH: SMOOTH  
F.A.O. FINISH: ALL OVER

LIST OF MATERIAL - QUANTITIES FOR ONE SHIP									
NO.	NAME OF PIECE	NO.	MATERIAL	REMARKS	NO.	NO.	NO.	NO.	NO.
1	STERN FRAME (AS DRAWN)	1	STEEL	TO BE WEARABLE QUALITY MATERIAL	4	SA	✓		
2	STERN FRAME (TO OP. HAND)	1	STEEL	TO BE WEARABLE QUALITY MATERIAL	4	SA	✓		
3	GUDGEON BUSHING	2	BRONZE		5	SA	✓		

NO.	GENERAL NOTES	NO.	REFERENCES	B.O.S. NO.	S.O.C. NO.	SHIPYD NO.
1	TEAM AS DRAWN FOR SHIPYARD USE	1	MOLD LOST OPERATIONS	504384	10510-1	10-481
2	MOLD LOST TO FURNISH PATTERN MAKER WITH NECESSARY TEMPLATES FOR REPRODUCING SHIPYARD FLOOR PLANS	2	STERN TUBE	504384	10510-1	10-481
3	ALL FINISH MACHINE WORK TO BE DONE AFTER ALIGNMENT IN SHIP HAS BEEN COMPLETED AND CASTING HAS BEEN SECURED IN SHIP	3	STERN TUBE	504384	10510-1	10-481
4	USING A COMPANY WITH AMERICAN BUREAU OF SHIPPING REQUIREMENTS FOR ATTACHMENTS OF CASTINGS TO FLOORS SEE DET 5-B	4	STERN TUBE	504384	10510-1	10-481
5	CASTINGS ARE TO BE IN ACCORDANCE WITH A.B.S. SPECIFICATIONS	5	STERN TUBE	504384	10510-1	10-481

HOLD-UP RESERVATIONS									
NO.	NAME OF PIECE	NO.	MATERIAL	REMARKS	NO.	NO.	NO.	NO.	NO.
1	STERN FRAME (AS DRAWN)	1	STEEL	TO BE WEARABLE QUALITY MATERIAL	4	SA	✓		
2	STERN FRAME (TO OP. HAND)	1	STEEL	TO BE WEARABLE QUALITY MATERIAL	4	SA	✓		
3	GUDGEON BUSHING	2	BRONZE		5	SA	✓		

GROUPS:  
120-325 STERN FRAMES

AMERICAN BRIDGE CO.	
MISSOURI VALLEY B. & I. CO.	
CHICAGO B. & I. CO.	
MISSOURI SHIPBUILDING CORP.	
JEFFERSONVILLE B. & M. CO.	
MARETTA MFG. CO.	
DRAVO CORPORATION	

SHIPYARD	HULL NUMBERS
ATL. CRAFT	
SHIPYARD'S DR. NO. 120-65	HULLS 413 TO 430 INCL.
GIBBS & COX, INC.	
NEW YORK CITY	
DESIGN AGENTS	

G.A.C. DR. NO. ATL-11080-1	
SCALE 1" = 1' 6" H.P.T. DATE 5-6-42	
DRAWN BY E. D. H. EXAMINED J. H. J. SK	
TRACED BY J. H. J. SK	
CHECKED BY J. H. J. SK	
APPROVED J. H. J. SK	

BY ACTION LETTER FILE	APPROVED
DATE 5-16-42	
FOR SUPERVISOR OF SHIPBUILDING	
DATE	
NO.	

FORWARDED TO BUREAU	
DATE	
NO.	
PLAN	
DATE	
NO.	

EXAMINED AND FOUND CORRECT	
DATE	
NO.	
SUPERVISOR OF SHIPBUILDING	
DATE	
NO.	

SHIPYARD'S DR. NO. 120-65	
GIBBS & COX, INC.	
NEW YORK CITY	
DESIGN AGENTS	


G.A.C. DR. NO. ATL-11080-1	
SCALE 1" = 1' 6" H.P.T. DATE 5-6-42	
DRAWN BY E. D. H. EXAMINED J. H. J. SK	
TRACED BY J. H. J. SK	
CHECKED BY J. H. J. SK	
APPROVED J. H. J. SK	

BY ACTION LETTER FILE	APPROVED
DATE 5-16-42	
FOR SUPERVISOR OF SHIPBUILDING	
DATE	
NO.	

FORWARDED TO BUREAU	
DATE	
NO.	
PLAN	
DATE	
NO.	

EXAMINED AND FOUND CORRECT	
DATE	
NO.	
SUPERVISOR OF SHIPBUILDING	
DATE	
NO.	

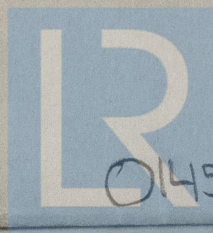


"JOBURE" 

*Stemframes*

RECORDS DEPT.  
LONDON

4



© 2021

Lloyd's Register  
Foundation

014513-014530-0439