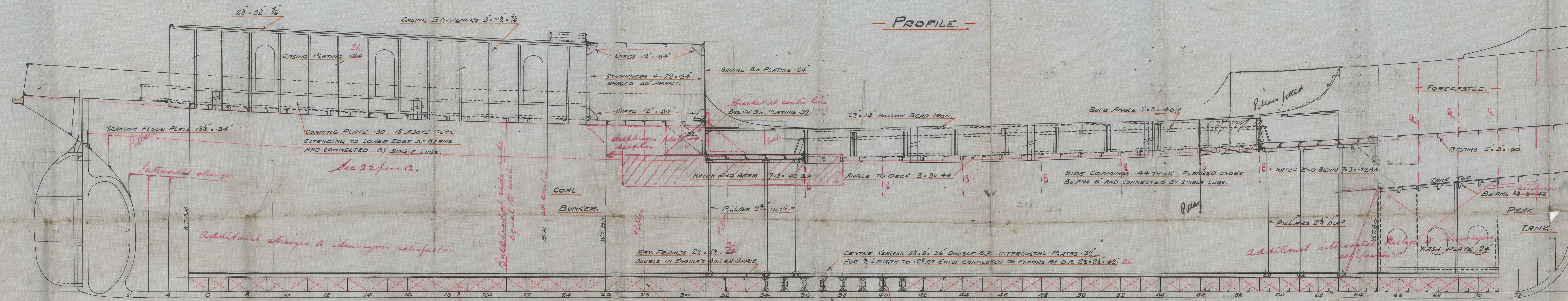
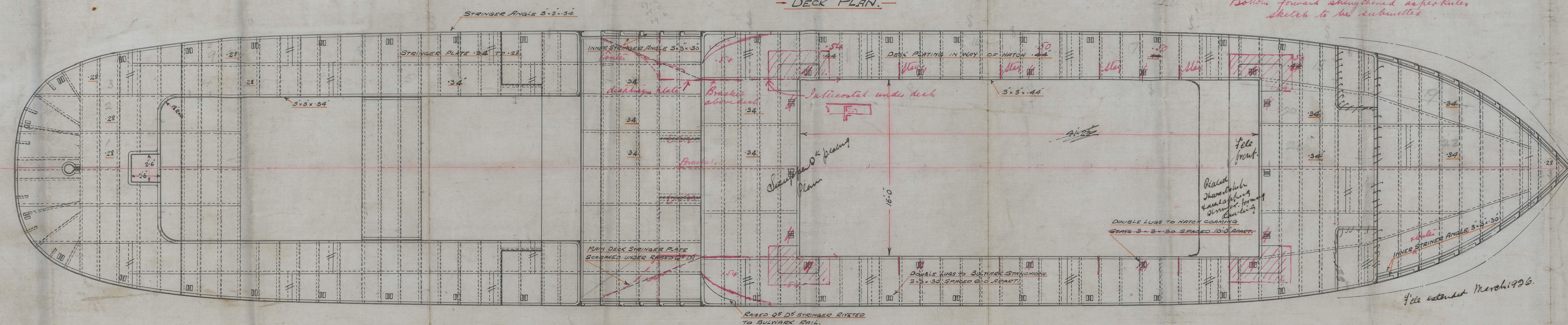


— SCALE :-  $\frac{1}{4}$  INS = 1 FOOT. —

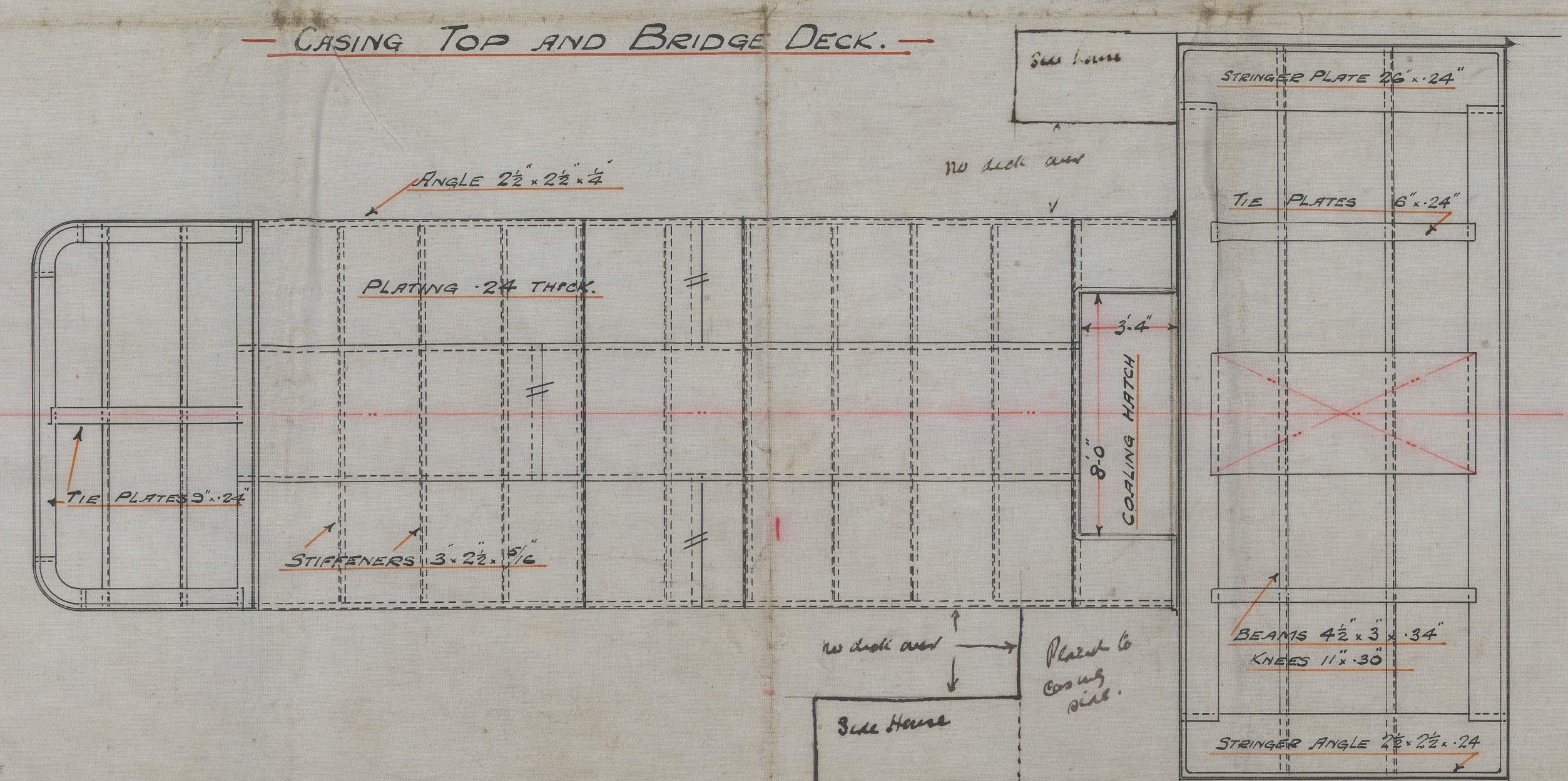
— PROFILE. —



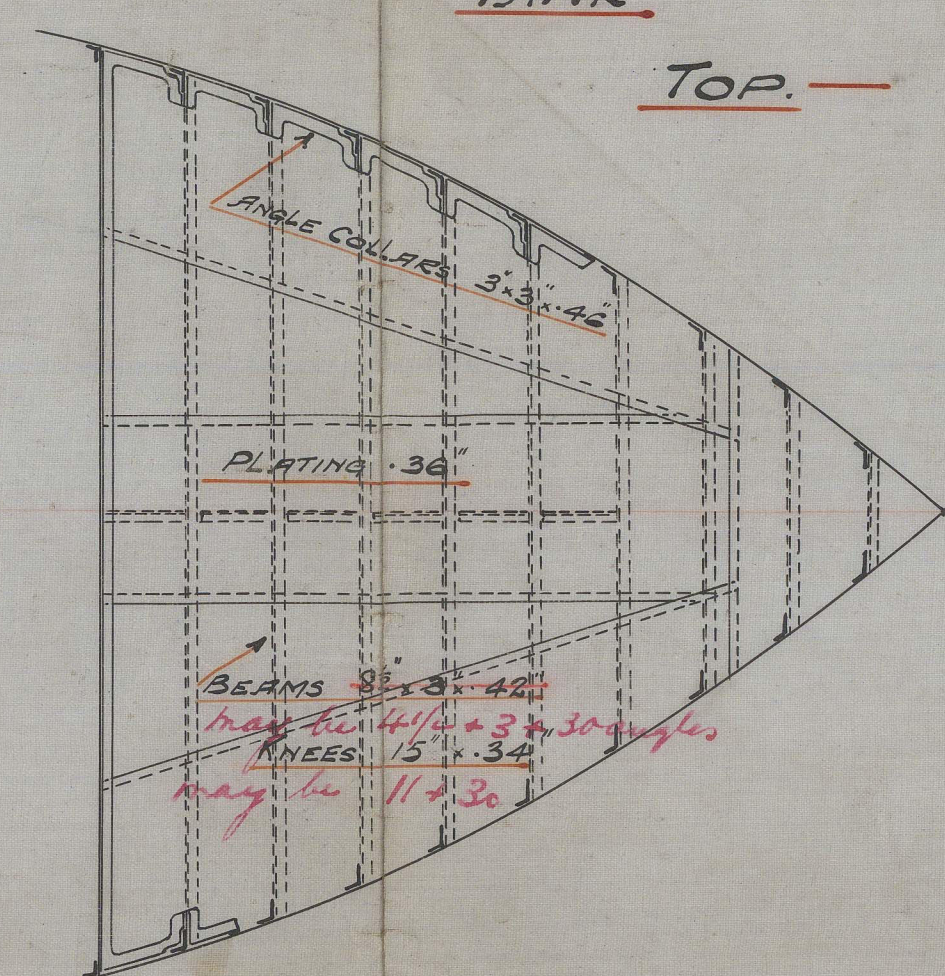
→ DECK PLAN.



CASING TOP AND BRIDGE DECK.

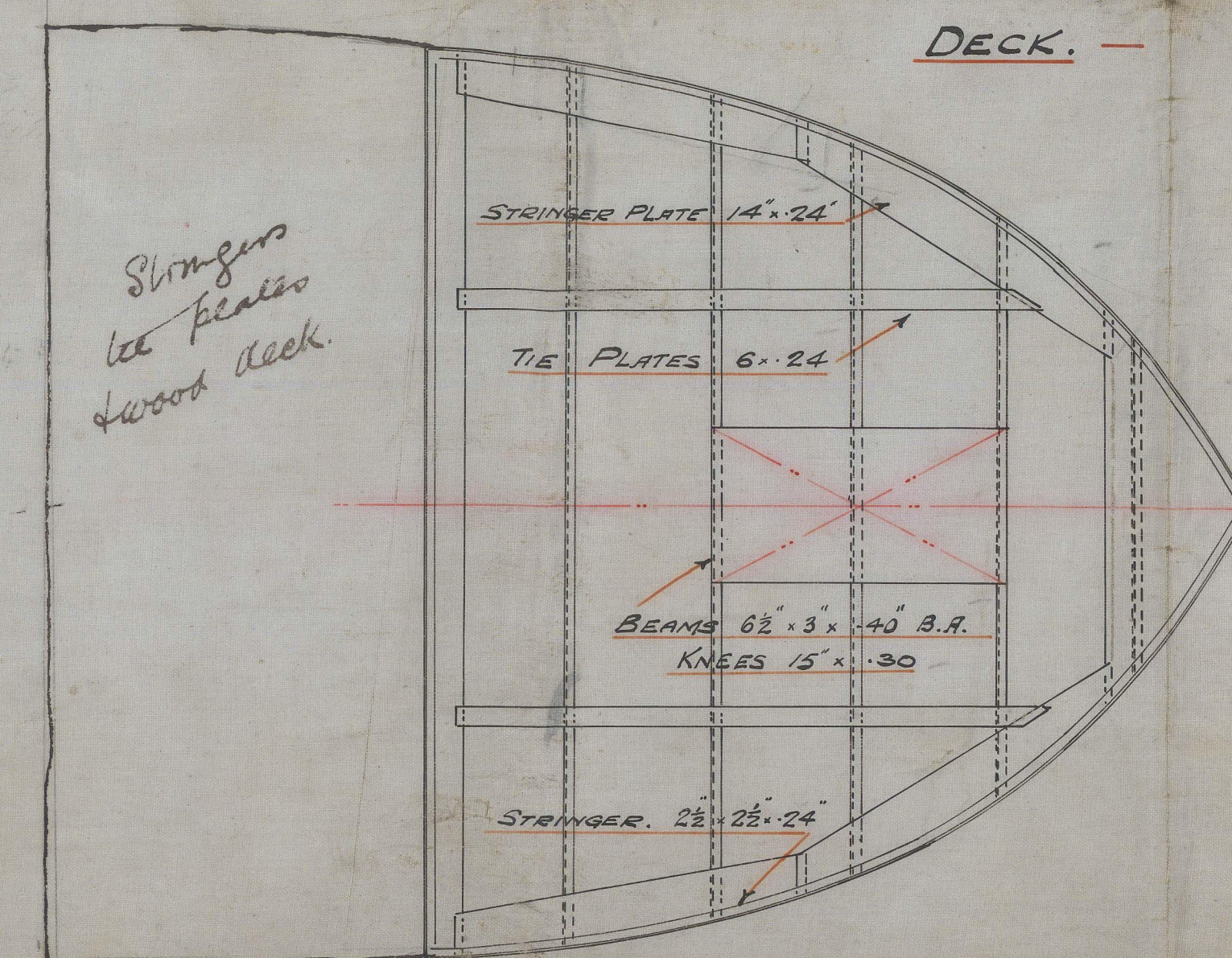


TANK

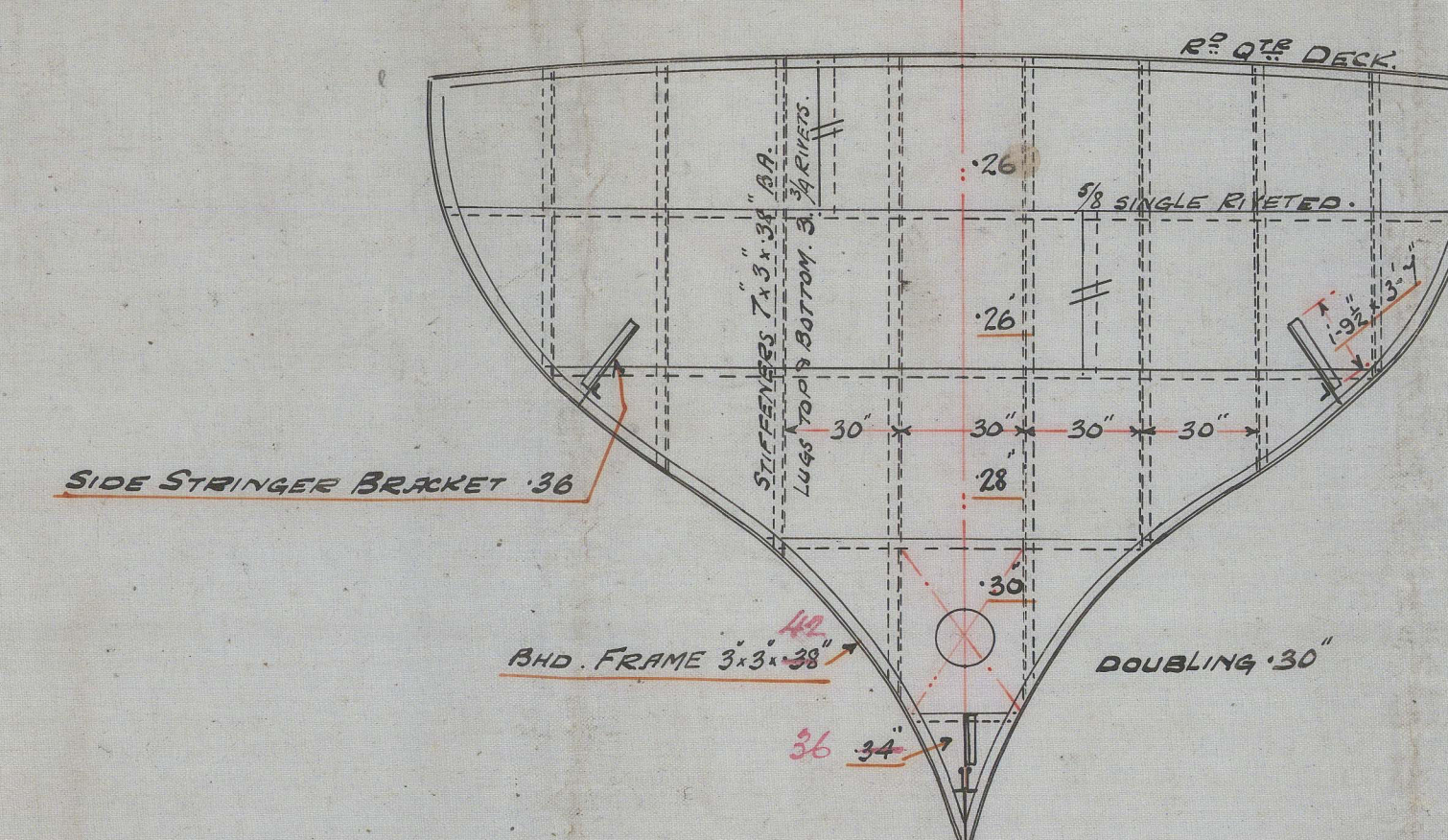


All Beams may be reduced  
at ends as per Rule.

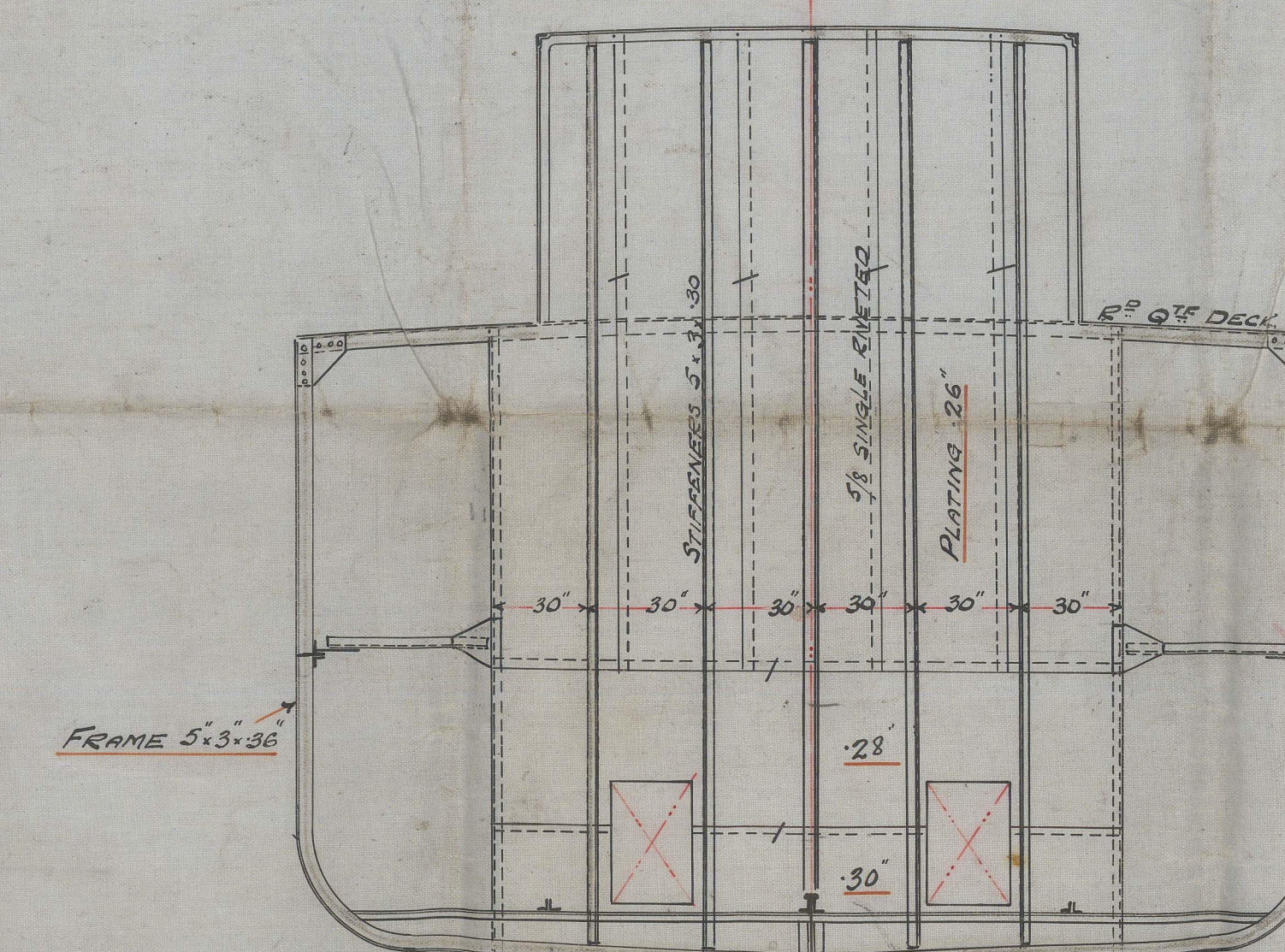
FORECASTLE  
DECK.



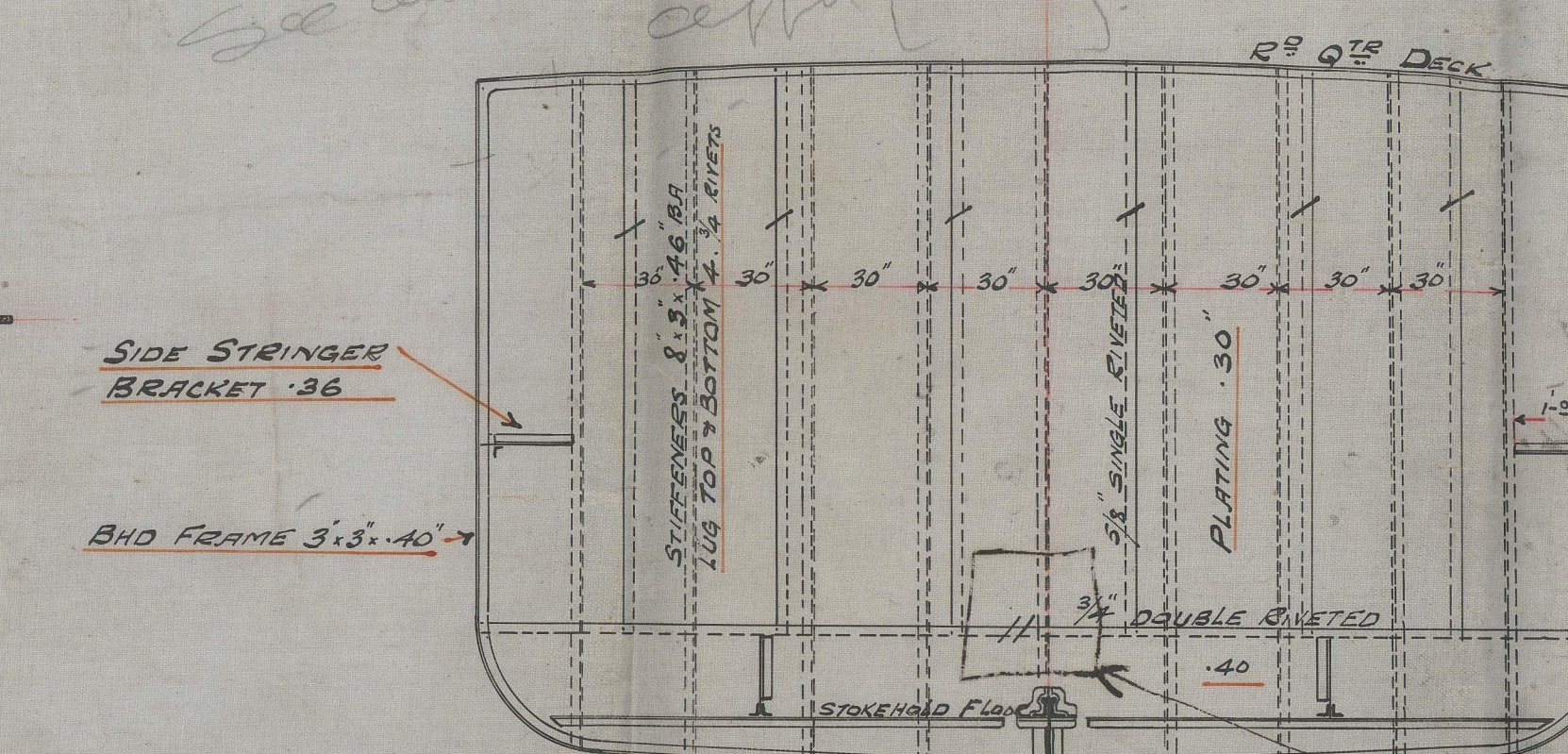
W.T. BULKHEAD. Fr. 5  
- Looking Aft. -



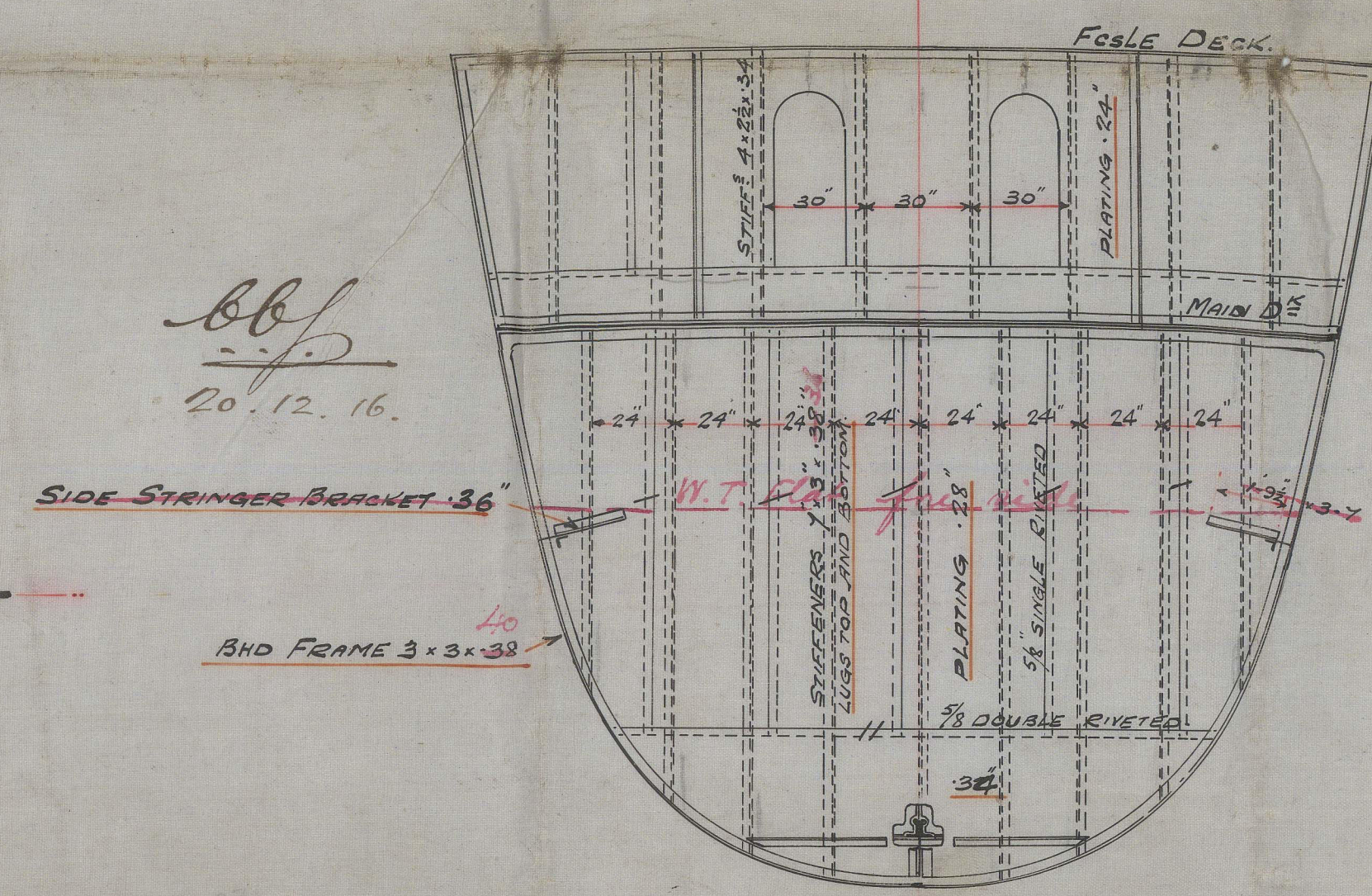
- BUNKER BULKHEAD. FR 23 -  
- LOOKING AFT -



- W.T. BULKHEAD. FR 26 -  
- LOOKING AFT. -



W. T. BULKHEAD. FR 65.



W. T. door fitted  
March 1926.  
Riv bar fitted to stiffener  
adjacent to shelf bar  
at both bottom

BUILDERS № 158

DE № 314.

W. H. WARREN

SHIPBUILDER &amp; REPAIRERS

NEW HOLLAND  
LINGS.



Lloyd's Register  
Foundation



W. A. Warren.  
New Holland.

---

No 158

Profile, decks.

or.

Bulkheads.

See later plans

Amended blue  
prints.

1/5 Margaret Birch  
Hull Report No. 305 1/4.

Totara



© 2021

Lloyd's Register  
Foundation

014518-014530-0308