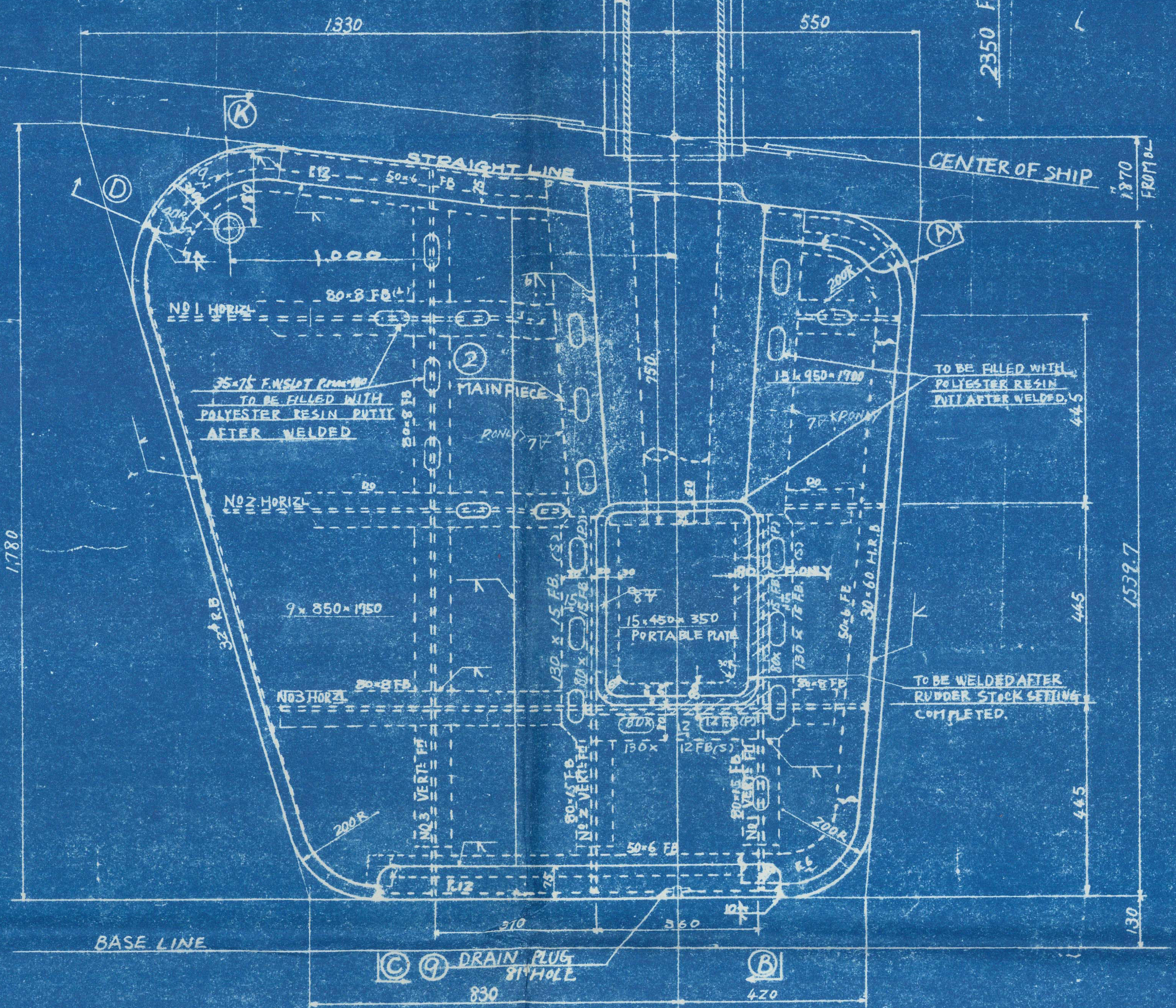
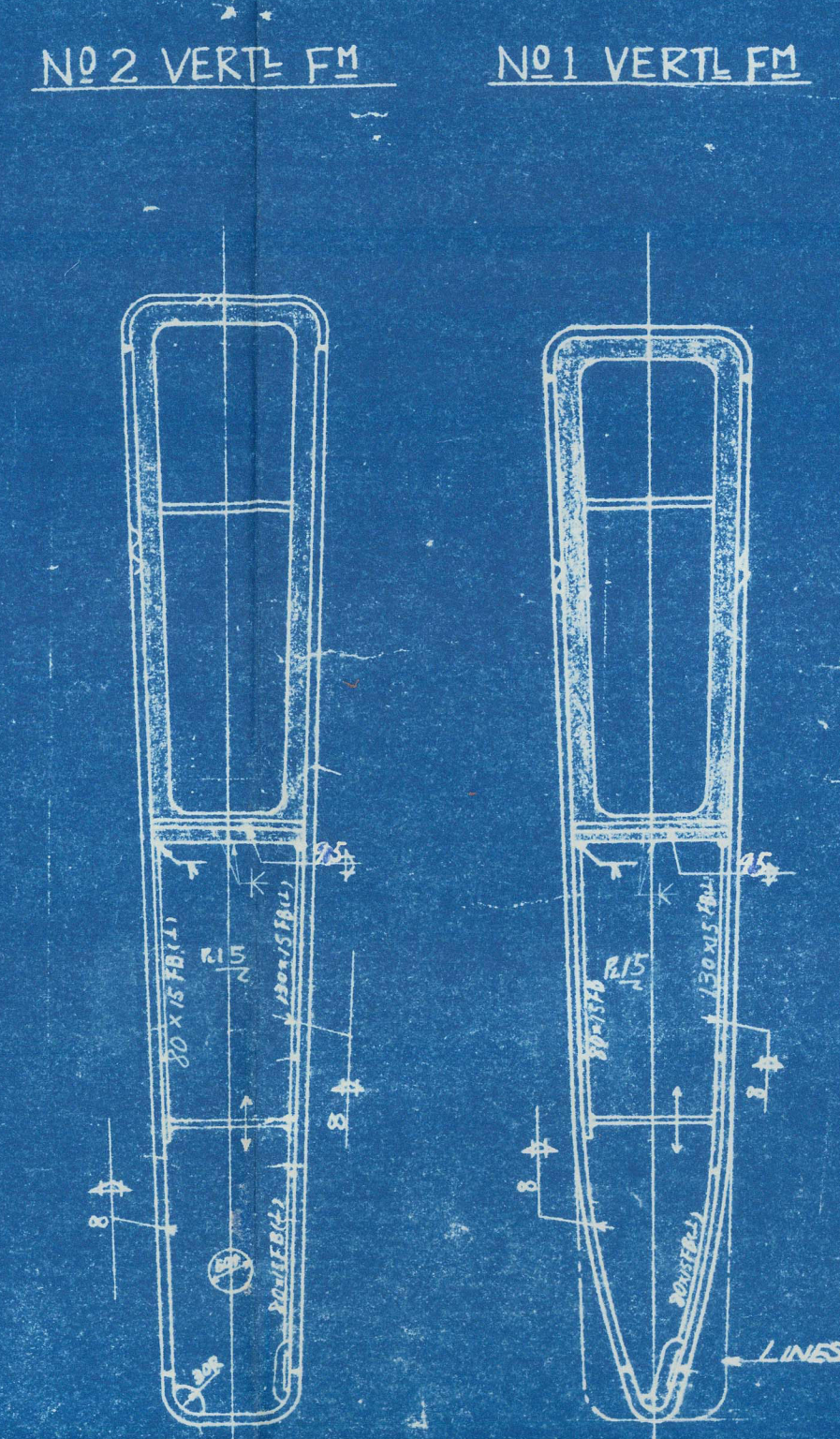
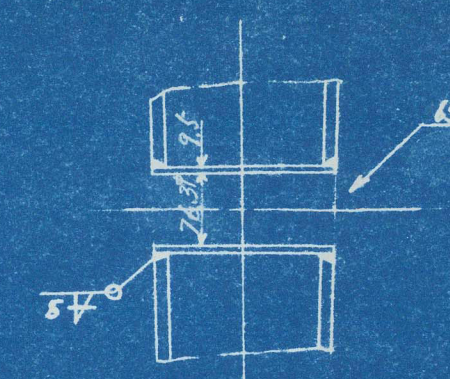
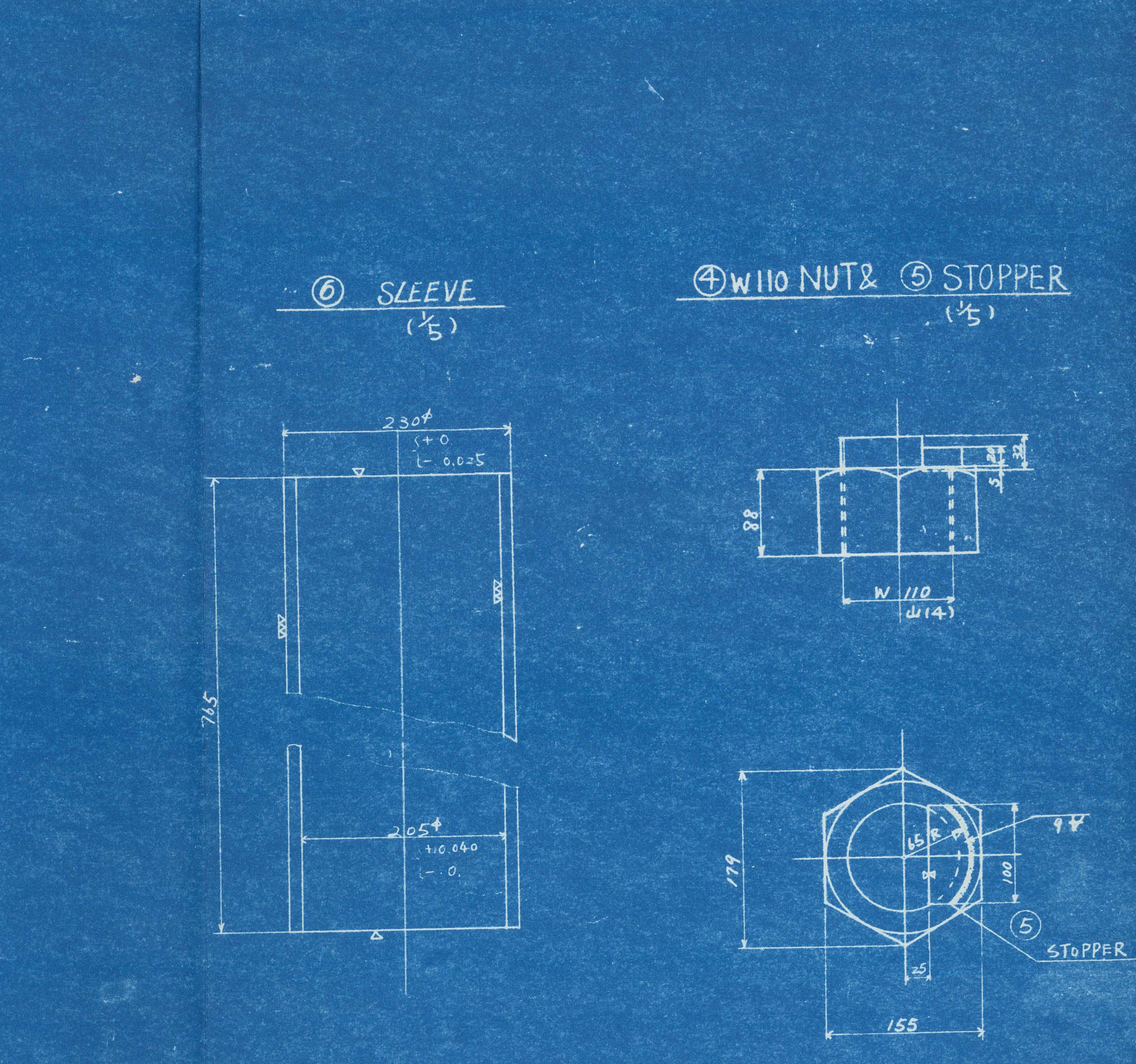


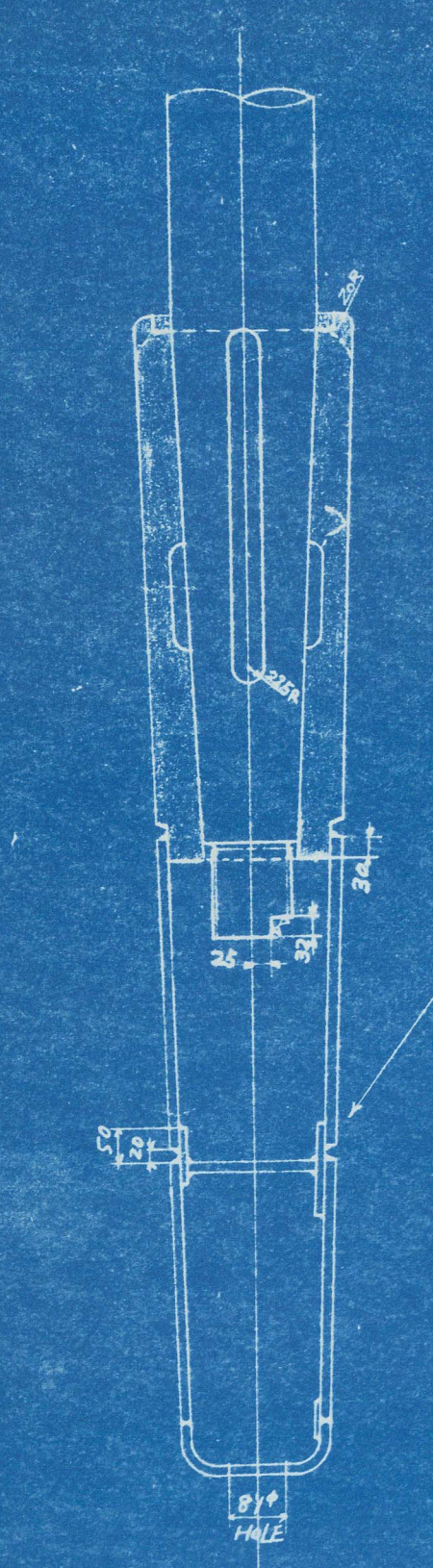
DETAIL (1/5)  
LIFTING HOLE



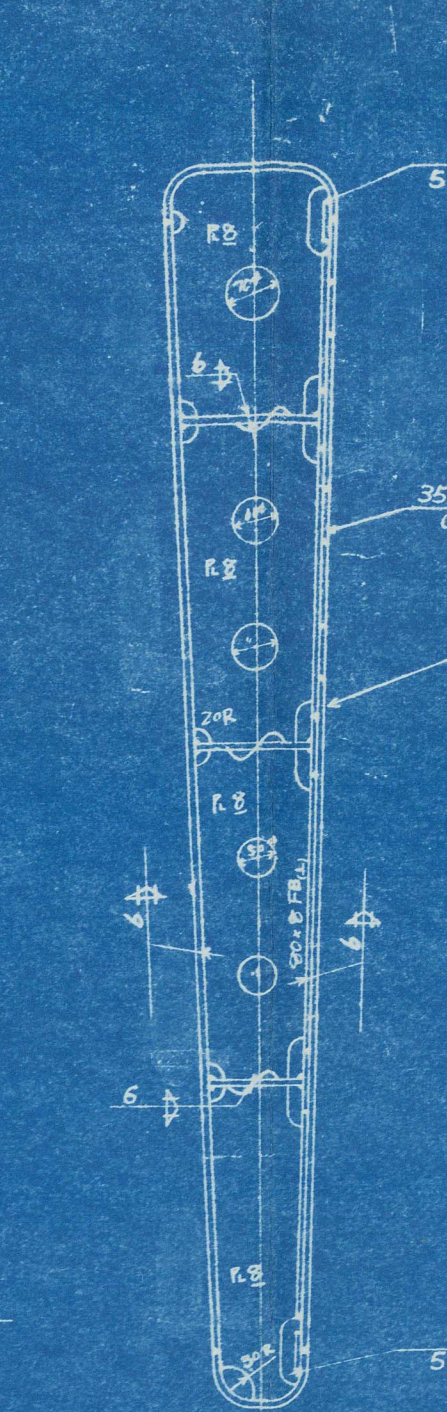
RUDDER TOP PLAN



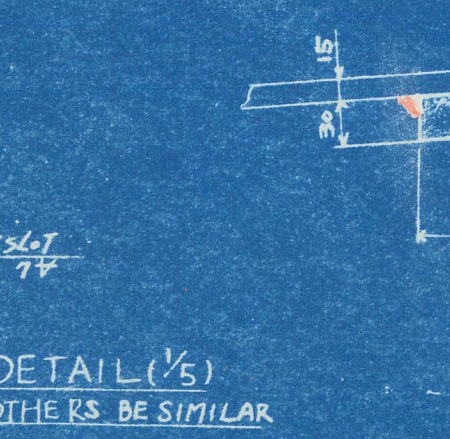
AP SECTION  
LOOKING FOR B



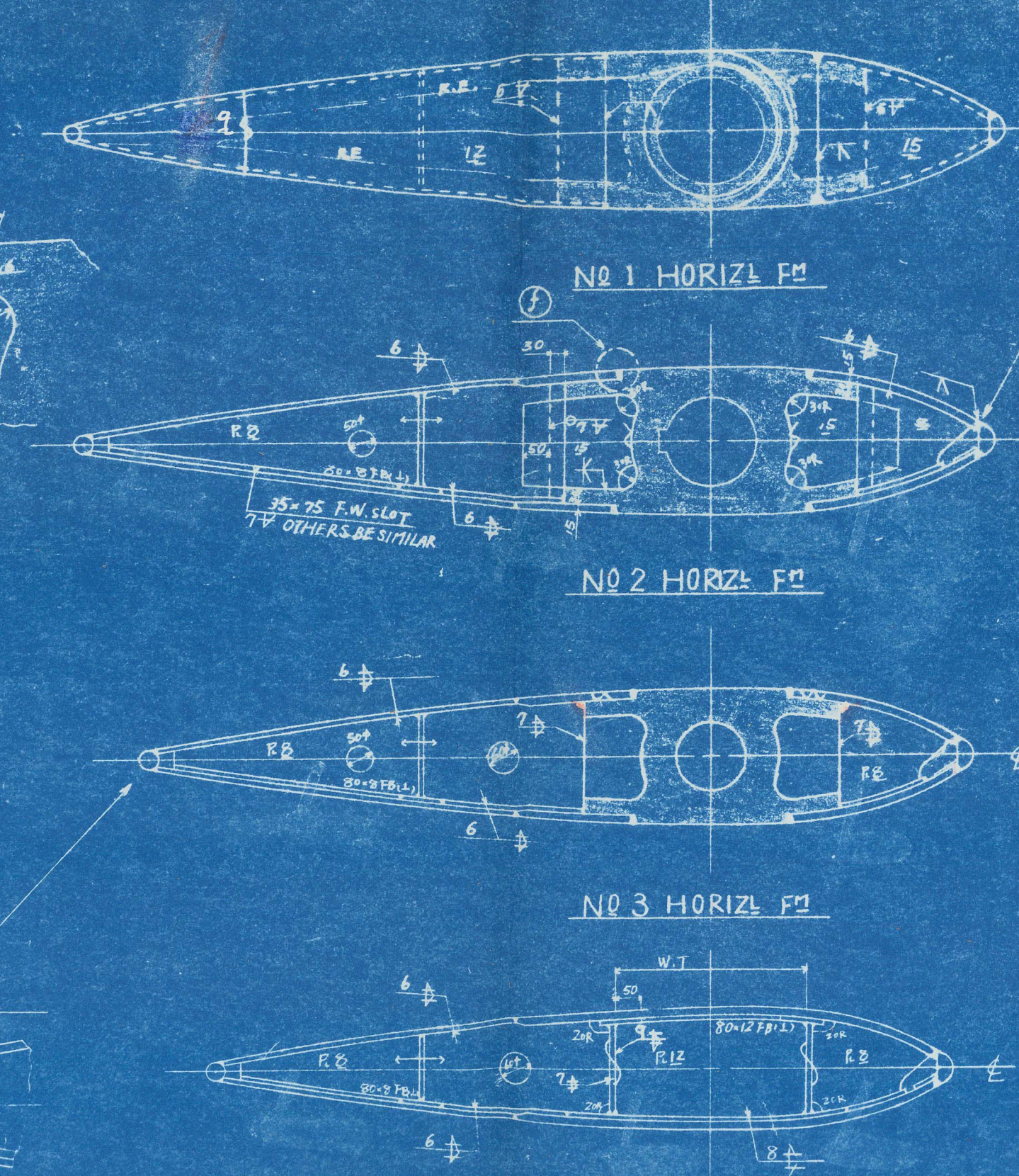
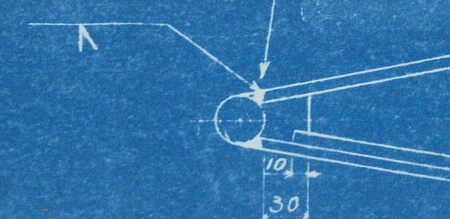
NO 3 VERT. FM



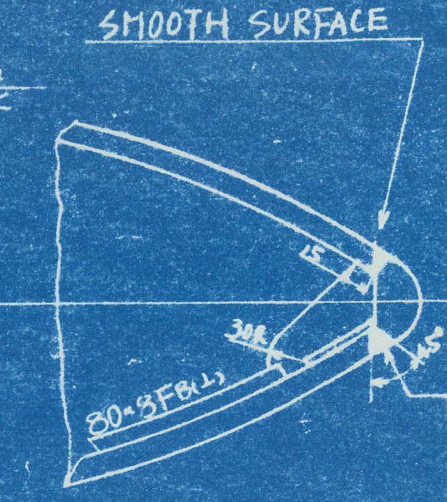
DETAIL (1/5)  
OTHERS BE SIMILAR



DETAIL (1/5)  
OTHERS BE SIMILAR



DETAIL (1/5)  
OTHERS BE SIMILAR



FINISHING MARGIN	
SMOOTH SURFACE	
ROUGH FINISH	MARGIN
COMMON FINISH	10mm
FINE FINISH	15mm

NOTE			
DATE	MANUF.	DATE	REMARK
MAY 21, 1963			

PRINCIPAL PARTICULARS	
LENGTH	44" 00
BREADTH	7" 20
DEPTH	5" 45
DRAFT	2" 35
DESIGNED SPEED (M.C.R. TRIAL COND.)	14" 75

RUDDER:-	
RUDDER AREA	
FORE PART	0.75
AFT PART	1.75
TOTAL	2.50
RUDDER AREA RATIO	1/30
HEIGHT	1.65
BREADTH	1.90
ASPECT RATIO	1.04
BALANCE RATIO	1/2.35
THICKNESS CHORD RATIO	0.105
MAX TORQUE	
AHEAD	1/4.269
ASTERN	0.449

- NOTE:-
1. AS TO THE RUDDER FORM SEE 'FORM OF RUDDER' PLAN.
  2. ALL DIMENSIONS SHOWN AT FINISHED CONDITION.
  3. PARTICULAR SCANTLINGS TO BE DISTINCTIVELY DETERMINED BY FILING AT MOLD 10FT.
  4. FORGED STEEL & CAST STEEL EXCEPT (C) TO BE MANUFACTURE TESTED AND INSPECTED IN ACCORDANCE WITH 'LR' RULE.
  5. CARBON CONTENTS OF CAST STEEL TO BE 0.23% OR LESS.
  6. RUDDER STOCK TO BE PROVIDED IN THE STEERING ENGINE.
  7. INSIDE OF RUDDER TO BE MADE WATER TIGHT COMPLETELY.
  8. INTERIOR SURFACE OF RUDDER TO BE PAINTED WITH FILLINGS AND DISCHARGING BITUMINOUS SOLUTION.
  9. THICKNESS TOLERANCE - MINUS TOLERANCE NOT TO BE ALLOWED.
  10. RUDDER PLAT TO MAIN PIECE & FRAMES AT STARBOARD SIDE TO BE COMPLETED FILLET WELDED SCOT AND HOLLOW PARTS OF SCOT TO BE FILLED WITH POLYESTER RESIN PUTTY AFTER WELDED.
  11. MARKS SHOWN TO PICK UP TEST PIECE MADE FROM THE EATH BODY.

FINISHED PLAN			
NO	NAME OF PART	MATERIAL	REMARK
1	W/4 AS PLAT HEAD GEAR	B.S. 512	0.054
1	4025 DRAIN PLUG	LAST W/4 STEEL PLUG	1.004
1	W/4 EYE BOLT	4025 STEEL PLUG	1.50
1	100 R.35 KEY	4025 STEEL PLUG	0.02
1	SLEEVE	4025 STEEL PLUG	0.66
1	NUT STOPPER	4025 STEEL PLUG	0.65
1	W/4 NUT	4025 STEEL PLUG	2.27
1	45-78-500 KEY	4025 STEEL PLUG	4.9
1	MAIN PIECE	4025 STEEL PLUG	4.61
1	RUDDER STOCK	4025 STEEL PLUG	6.06
NO	NAME OF PART	MATERIAL	REMARK
1	POLISI 505	THE GOV. OF THE REPUBLIC OF INDONESIA	390° PATROL BOAT
RUDDER			
HITACHI SHIPBUILDING & ENGINEERING CO. LTD.	DRAWN BY	SA. O. O. O.	
MUKAISHIMA SHIPYARD	CHECKED BY	SA. O. O. O.	
DESIGNING SECTION	REVIEWED BY	SA. O. O. O.	
DATE MAY 21, 1963	CHIEF OF SEC.	SA. O. O. O.	
MANUF. NO.	SHEET NO.	FINAL - 20	
CODE NO.	DRAWING NO.		



RECORDS DEPT.,  
LONDON.

4

Kobe Rpt. No.	11678
Port of Survey.	MUKAISHIMA
Name of Ship.	POLISI 505
Title of Plan.	RUDDER



© 2021

Lloyd's Register  
Foundation

014501-014512-0266