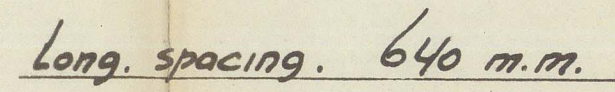
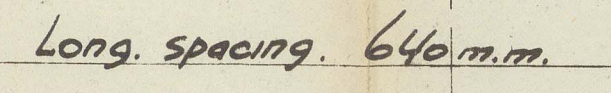


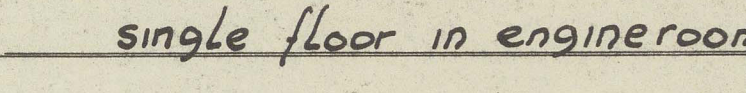
DECK HOUSES AFT.



SECTION BOILERROOM.

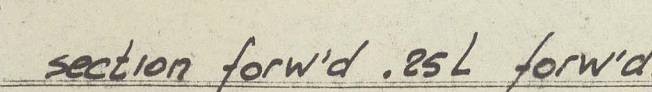


SECTION BRIDGE DECK.



SECTION LANDING DECK.

construction of Landingdeck capable of supporting a uniformly distributed load of  $6550 \text{ Kg/sq.m.}$



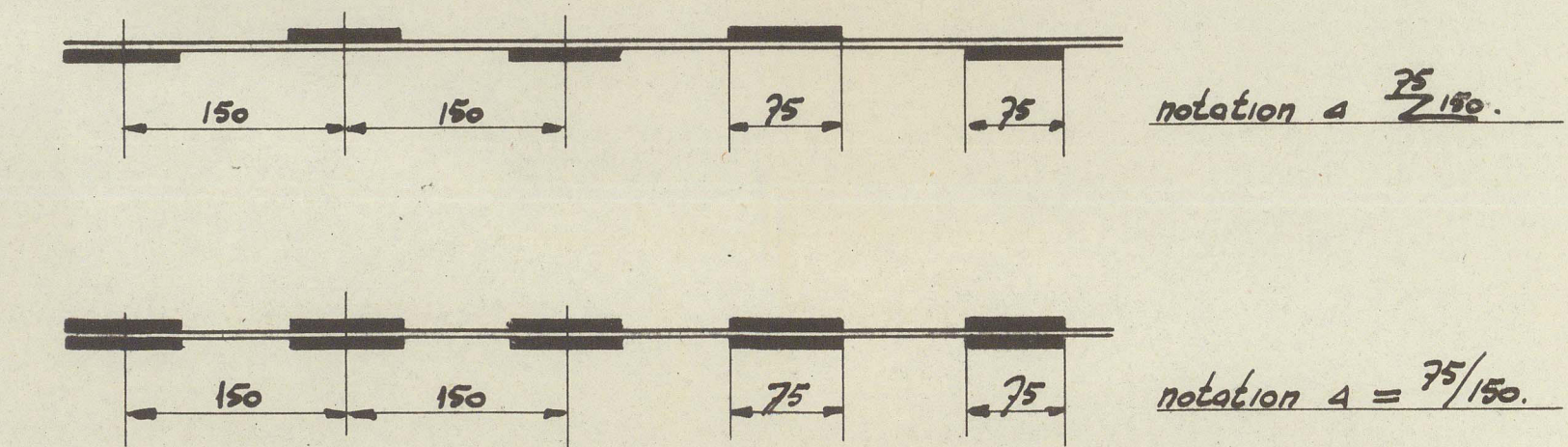
classification. A1. for service in Calcutta harbour and Hooghly river. With descriptive notation "Floating crane." and special notation: "Longitudinal framing."

equipment. (equipment number = 12.200 British units.)

2 x 40 cwt. stockless bowler anchors.  
2 x 30 cwt. stockless stern anchors.  
2 x 120 fathoms 1 7/8" special steel stud link chain cable (for bowlers)  
2 x 90 fathoms 1 1/8" special steel stud link chain cable (for st. anch.)  
1 x 100 fathoms 4" circ. 6 x 12 F.S.W. rope (for towing L.)  
4 x 100 fathoms 2 3/4" circ. 6 x 32 F.S.W. rope (for warping wires.)

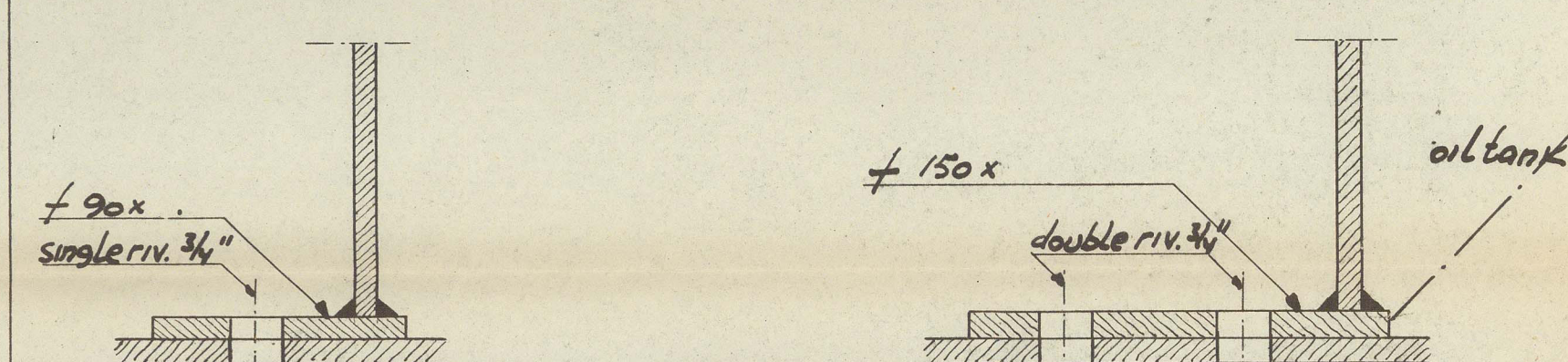
principal dimensions.

Length. o.a.	-	34.95 m.	1d0' - 3 3/4"
Length. Epp.	-	32.355 m.	114' - 3 1/4"
Breadth	-	17.40 m.	57' - 0"
Depth	-	4.27 m.	14' - 0"
Freeboard min.	-	1.52 m.	5' - 0"
Sheer	-	0.00 m.	0' - 0"
Camber	-	0.36 m.	1' - 2 1/4"
Draught for scantl.	-	2.90 m.	9' - 6"
Roake of side inwards.	-	0.35 m.	1' - 1 3/4"
Long. frame spacing.	-	0.64 m.	2' - 1 1/4"

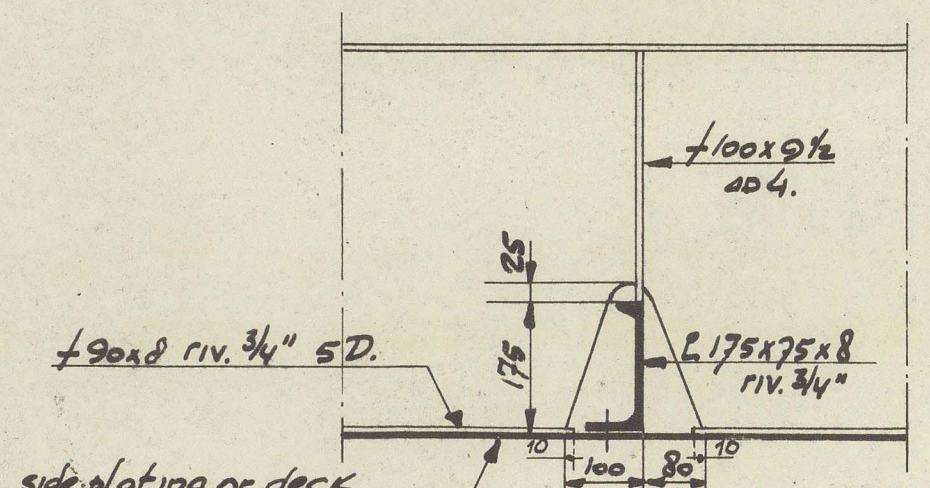


connection girder or blkx.  
to shell or deck.

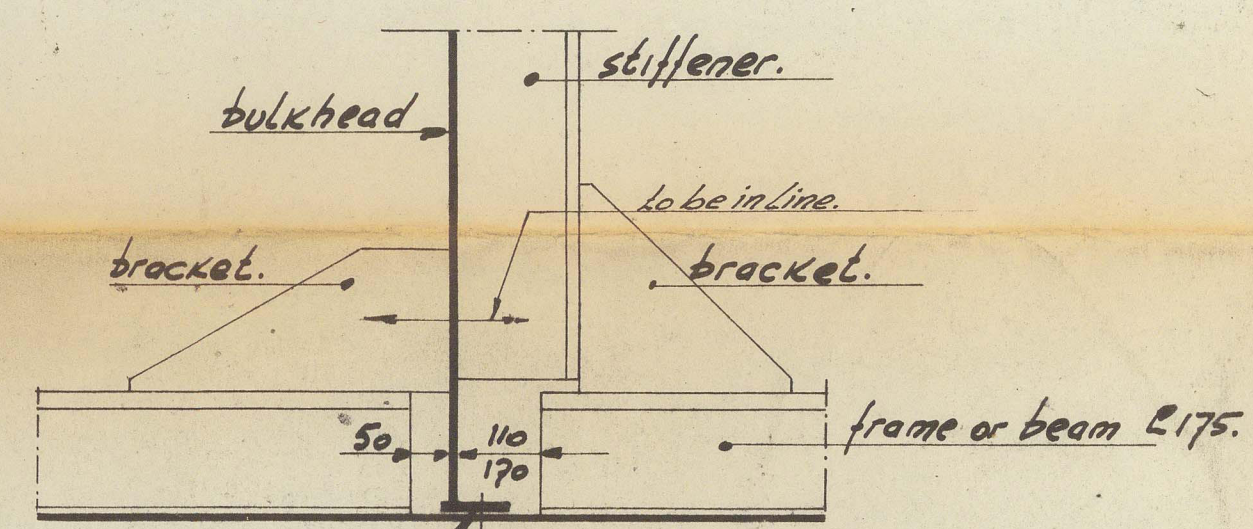
connection bulkhead to  
shell or deck.



principal detail connection frame  
or beam to transverse.



principal detail connection Long. frame or beam to bulkhead.



This plan has been verified with the approved plans, and includes any modifications and/or additions to the original approved arrangements made during construction which have been approved locally as being in accordance with or by standards equivalent to Rule requirements.

Signature *[Signature]*  
Surveyor(s) to Lloyd's Register of Shipping.  
*Richard J. ...*

[illegible]