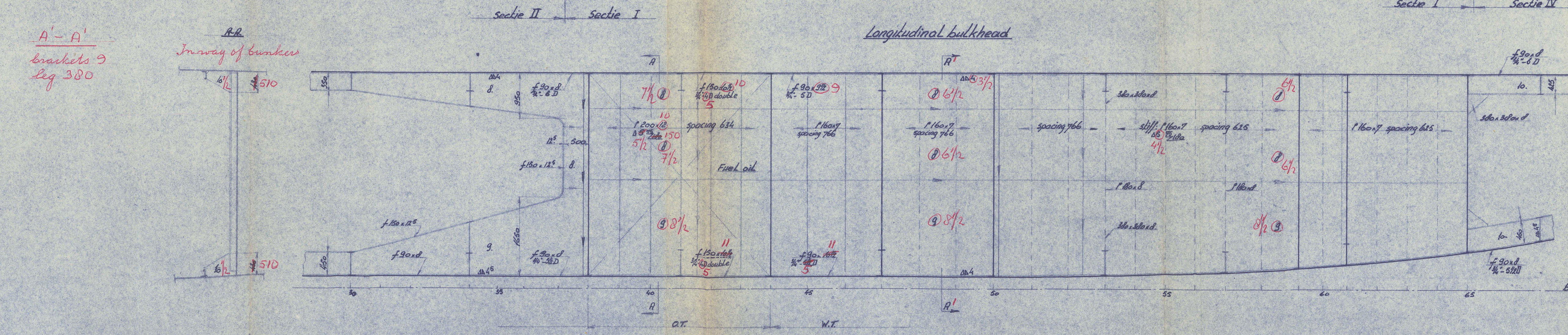
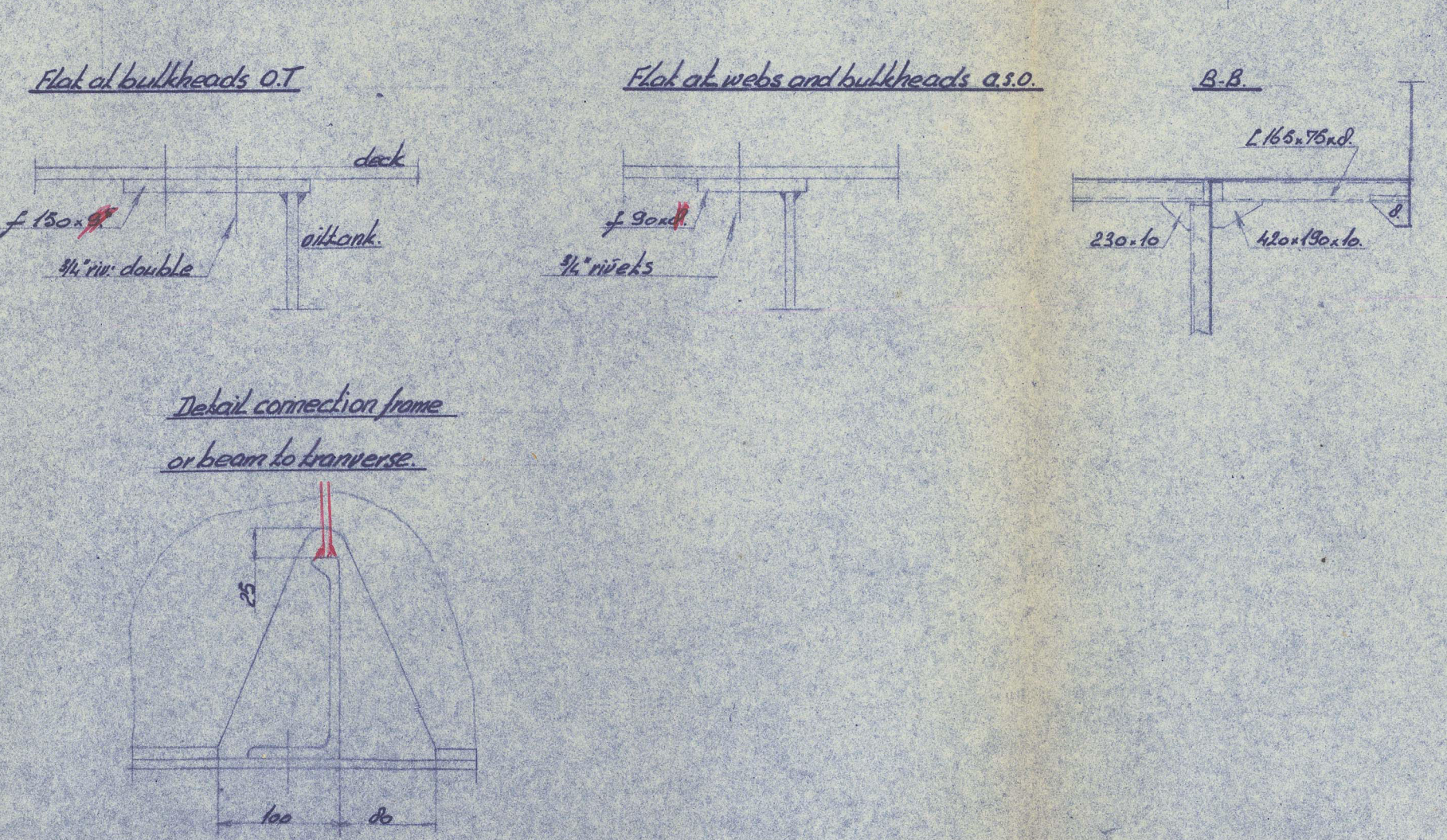
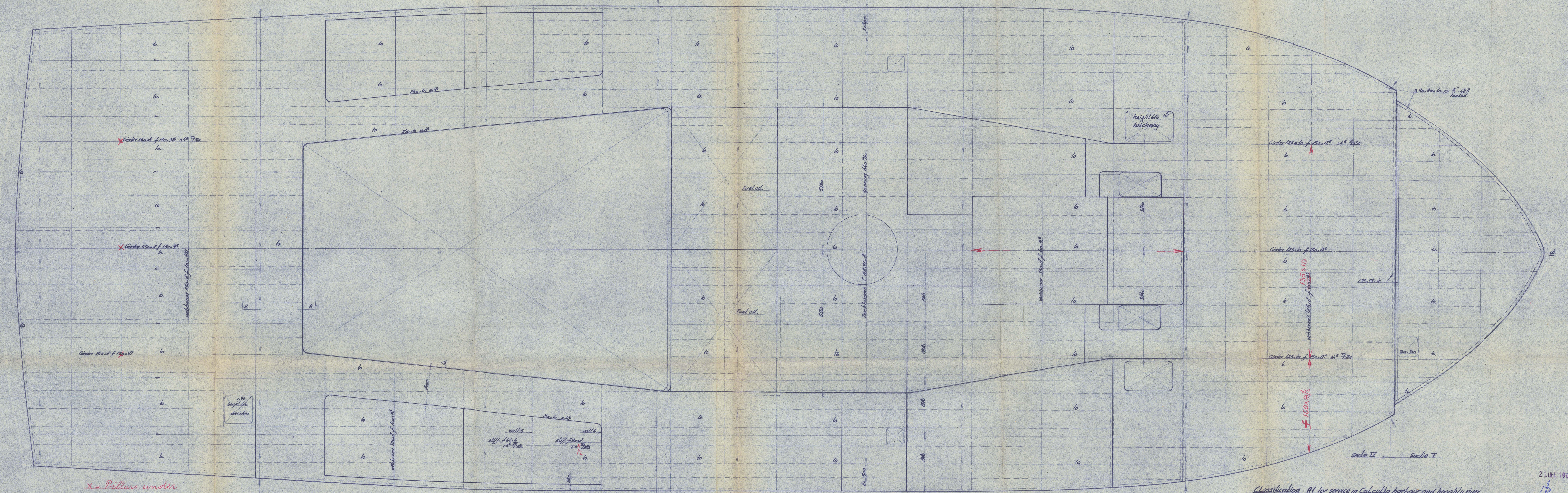
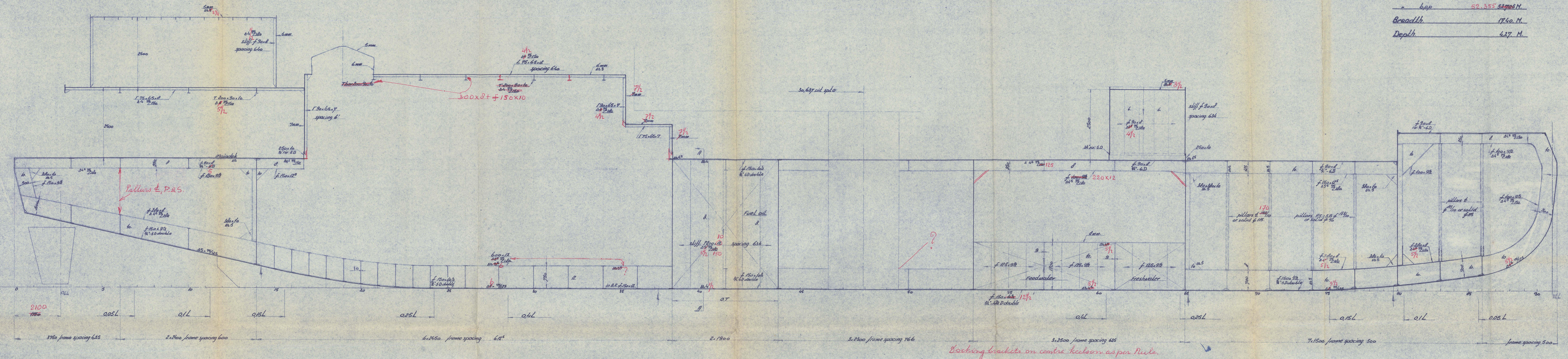


Principal dimensions
 Length o.a. 54.95 m
 Breadth 17.40 m
 Depth 4.37 m



Classification: R.I. for service in Calcutta harbour and Hooghly river
 With descriptive notation "floating crane" and special notation "longitudinal framing"

21 DEC 1961

LONDON COPY

Benaming	Mat.	Model No.	Standaard tek.	Opmerk.
Gewijzigd: Zie tek.	Mat.	Model No.	Standaard tek.	Opmerk.

Constructionplan SHEET 1

Uitvoering: Naam, Dat., Controle, Par. Dat., Schaal, Registe. No. 426634

Datum, Construct., Getek., Bewerking

WERF GUSTO
YARD NO 1100

RETAIN IN RECORDS

New Ship

014401-014411-0184

PROFILE & DECKS (SHTI)

①



© 2021

Lloyd's Register
Foundation