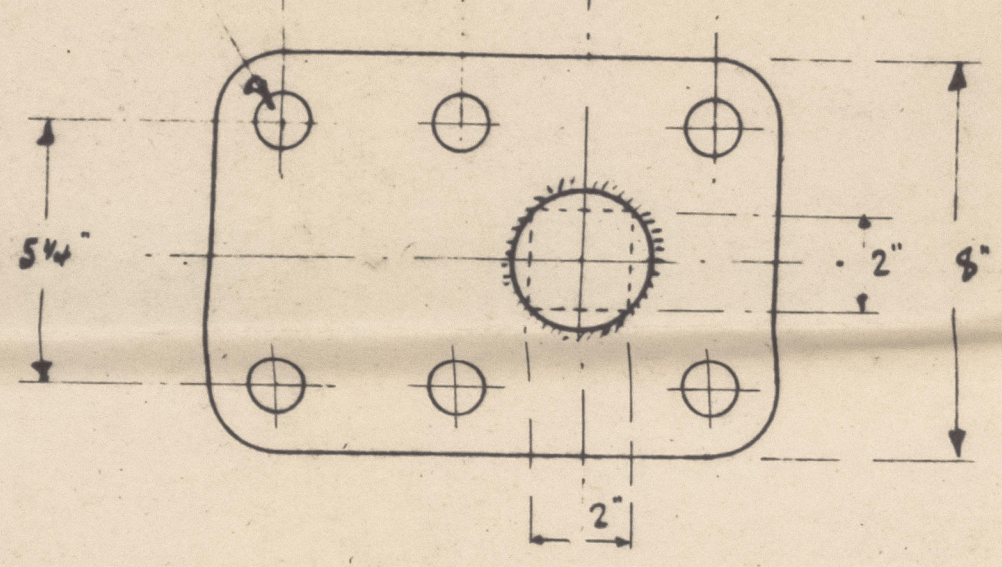
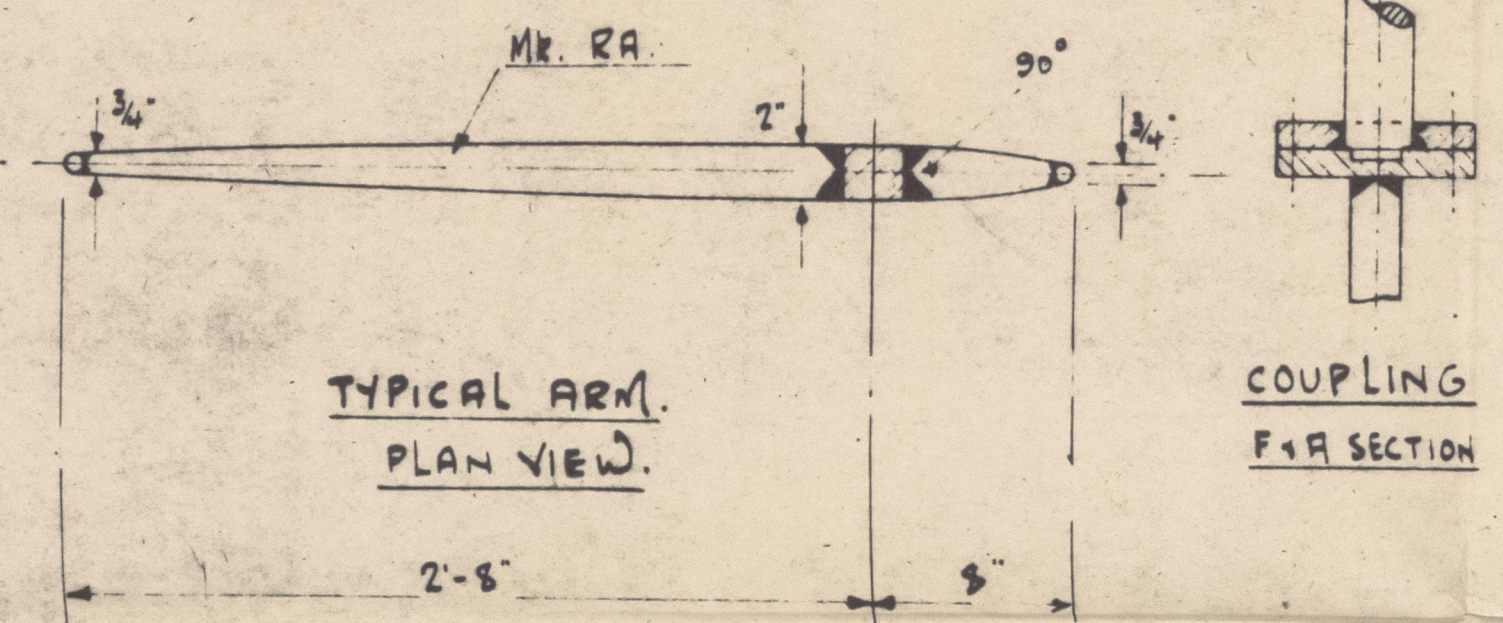


NOTE: PAINTING SURFACES MACHINED
Holes SPOT-FACED.

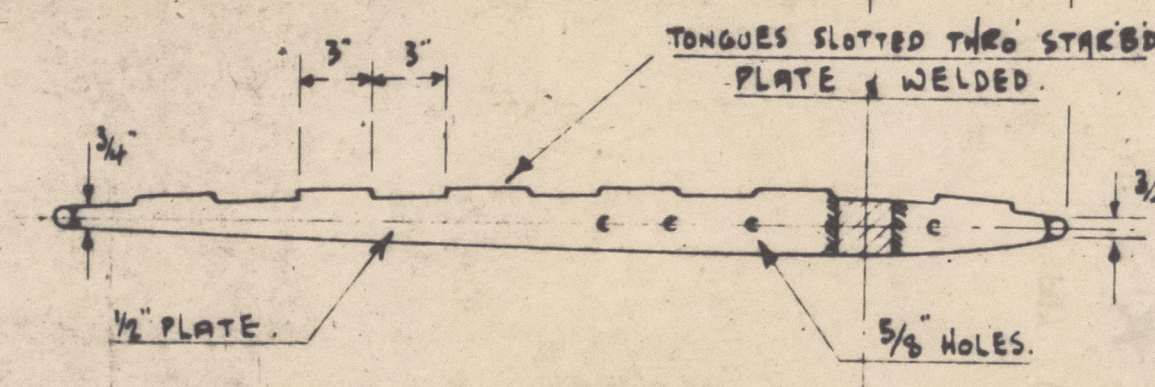
6 - 1/2" D. FITTED WHITWORTH
BOLTS - NUTS DOWNWARDS
WITH SPLIT PINS THRO.



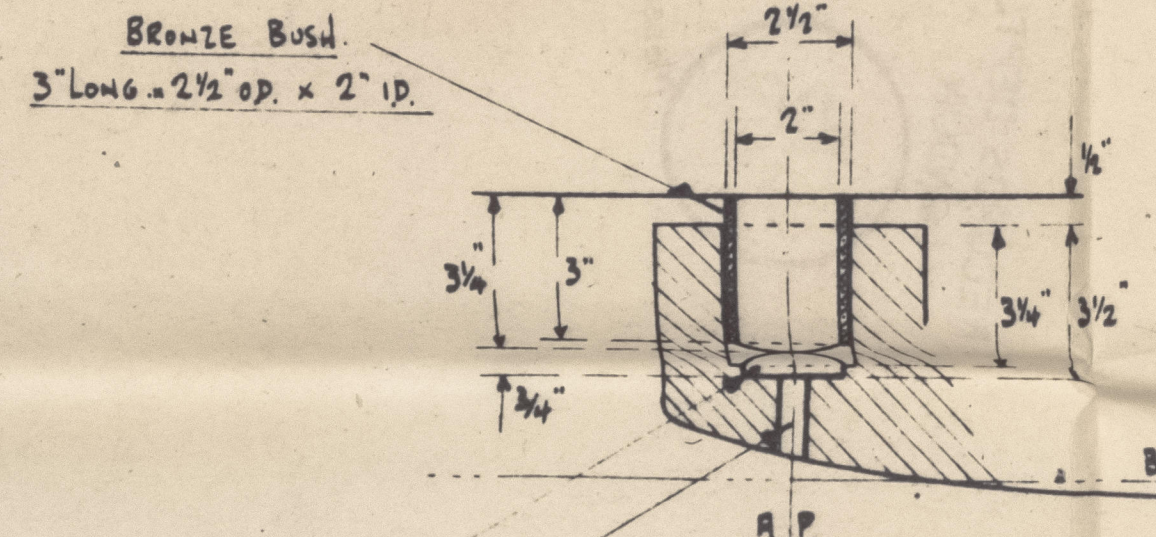
DETAIL OF COUPLING.
3" ~ 1 ft.



TYPICAL ARM.
PLAN VIEW.

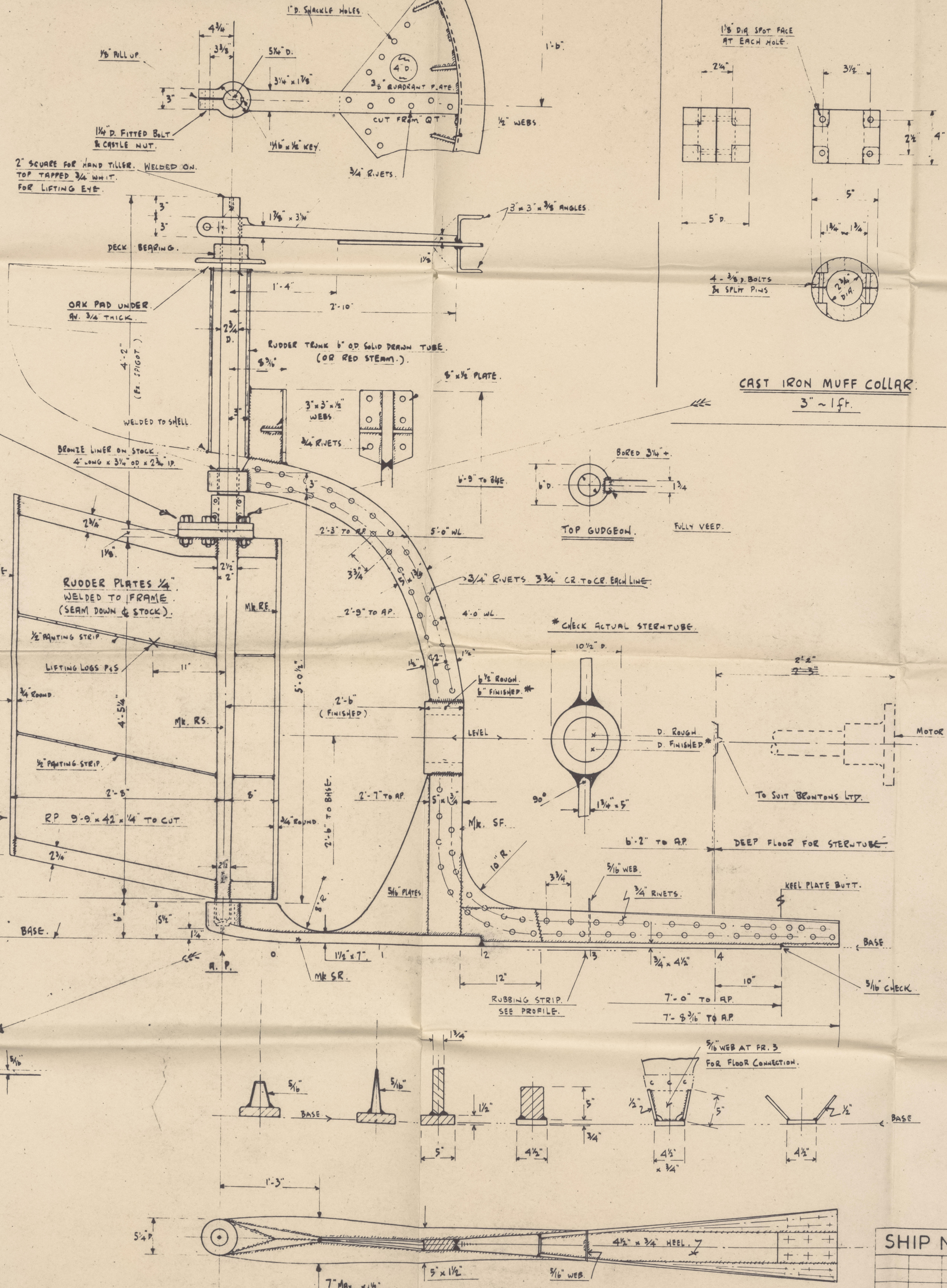


TYPICAL PAINTING STRIP.
PLAN VIEW.



DETAIL OF HEEL.
3" ~ 1 ft.

NOTE: QUADRANT STOPS ON DECK AT 35° P.S. BOLTED ON-7
TO PERMIT 60° SWING WHEN CHANGING SCREWS.



MOTOR TANK BARGES.

NOS. W.S. 1047-8, 1063-4-5.

STERNFRAME & RUDDER.

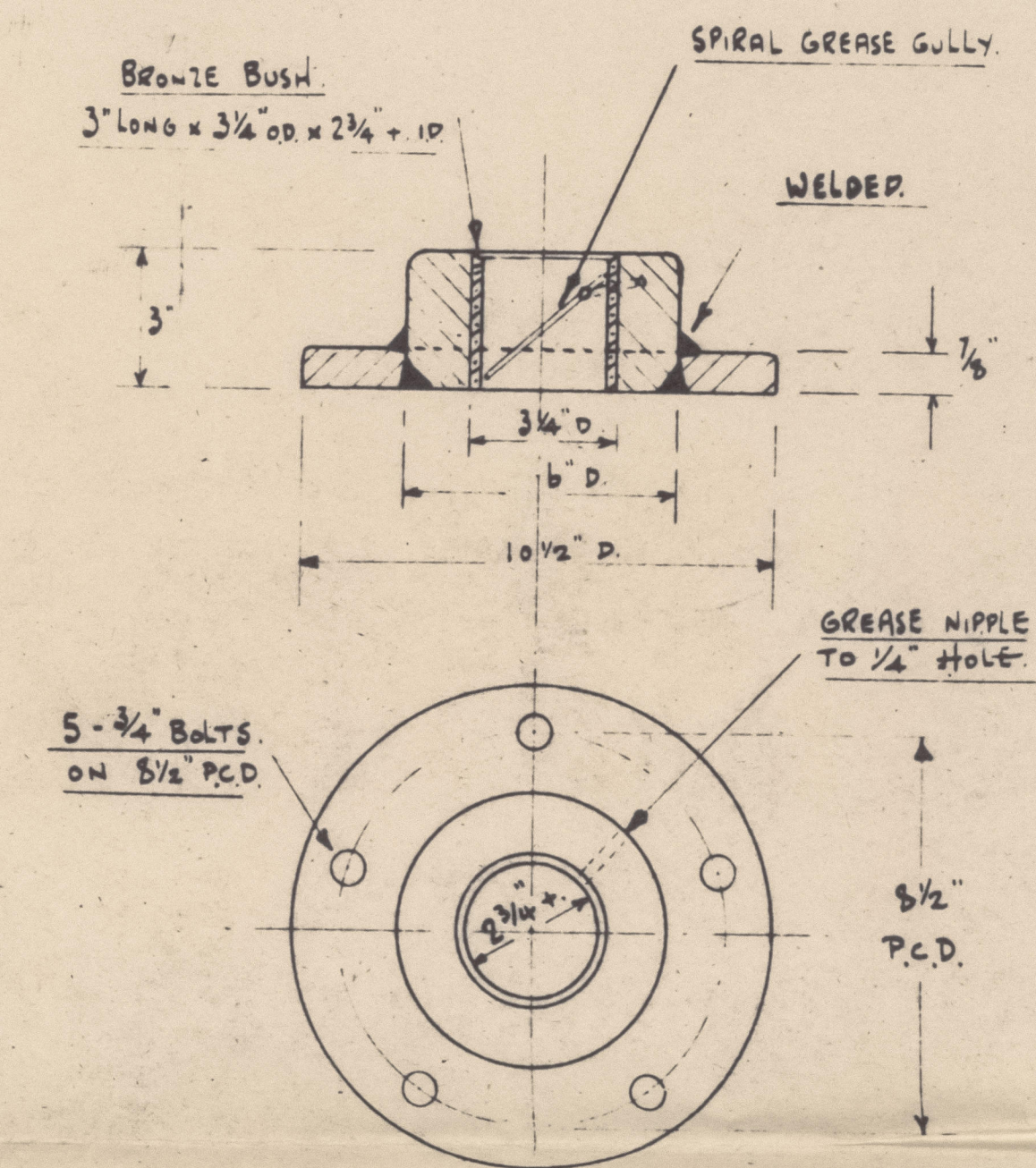
(FOR LISTER EVMG3 MOTOR WITH 2:1 REDUCTION GEAR).

SCALE: 3" = 1 ft.

~ LLOYDS CLASS ~

"A1 BARGE" CARRYING PETROLEUM IN BULK.

FOR CANAL & ESTUARY SERVICE.



DECK BEARING.
3" ~ 1 ft.

~ GENERAL ~

1. ALL MATERIALS OF SHIP QUALITY MILD STEEL
UNLESS OTHERWISE STATED.
2. ELECTRICALLY WELDED CONSTRUCTION THUS:

SHIP N° W.S. 1047-8, 1063-4-5.		TITLE	
		STERNFRAME & RUDDER	
ISSUE	MODN	APPO	DATE
JAMES W. COOK & CO. [WIVENHOE] LTD.		DRG. N° 2017	

STERNFRAME, RUDDER, QUADRANT ETC..
1/2" = 1 ft.

Signed By LLOYDS SURVEYOR 25/10/51.

RECORDS DEPT.
LONDON

3

Swallowc ★

Messrs. James. W. Cook (Wivenhoe) Ltd.

Yard Nos 1063-4-5.

" Sternframe & Rudder."



© 2021

Lloyd's Register
Foundation

014322-014384-0056