

No 338.

MIDSHIP SECTION

BARGE FOR THE CARRIAGE OF MOLASSES OR OIL FUEL.

SCALE:- 1" = 1 FOOT.

DIMENSIONS:- LENGTH=139'-6" 30'-0" 11'-8" MLD. DRAFT=10'-3"

TO CLASS BRITISH CORPORATION B.S.* DUMB BARGE FOR SERVICE IN THE RIVER MERSEY.

EQUIPMENT.

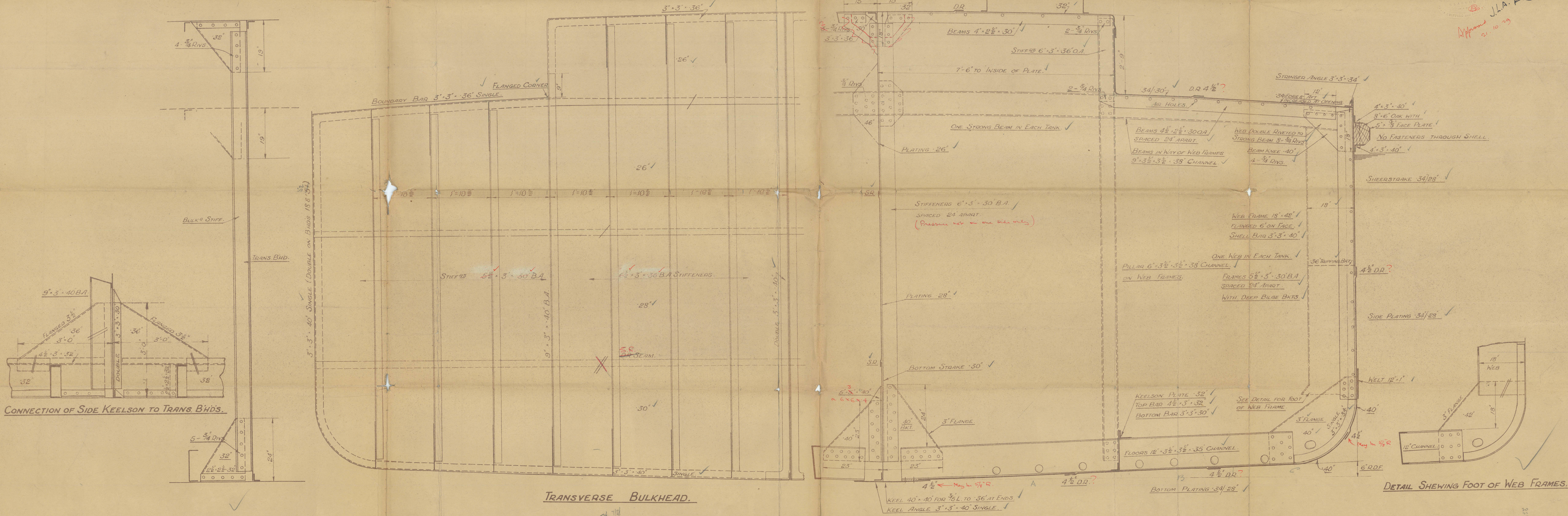
- 2 STOCKLESS ANCHORS 12 1/2 CHTS EACH.
- 60 FATHOMS 1 3/16 STUD LINK CHAIN.
- 45 2" S.W.R.
- 45 1 1/4" S.W.R.
- 70 3 3/4" MANILLA

RIVETING.

- KEEL BUTTS TREBLE RIVETED SEAMS DOUBLE RIV.
- BOTTOM SHELL - BUTTS DOUBLE RIV. SEAMS DOUBLE RIV.
- SIDE SHELL - BUTTS DOUBLE RIV. SEAMS DOUBLE RIV.
- TRANS BULKHEADS - BUTTS SINGLE RIV. SEAMS SINGLE RIV.
- LONGT - BUTTS SINGLE RIV. SEAMS SINGLE RIV.
- DECKS - BUTTS DOUBLE RIV. SEAMS DOUBLE RIV. (INCLUDING STRINGER)
- EXPANSION TRUNK - BUTTS DOUBLE RIV. SEAMS DOUBLE RIV.

REDUCED RIVETING AT ENDS OF VESSEL.

Recommend 5/8" Riveting in Main Body and ends.



21 OCT 1929

Approved J.H.A. 21.10.29

1

Midship Section
Galedon S & E. lpo

Nº 338.

S. p. 28/11/29.

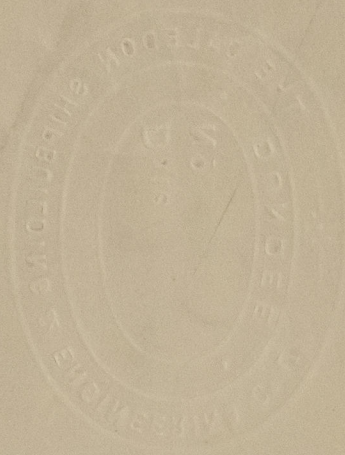
21 - 10 - 29.

"BRIMOLCO"



© 2021

Lloyd's Register
Foundation



Midship Section

Daledon 338.

Bag.



© 2021

Lloyd's Register
Foundation