

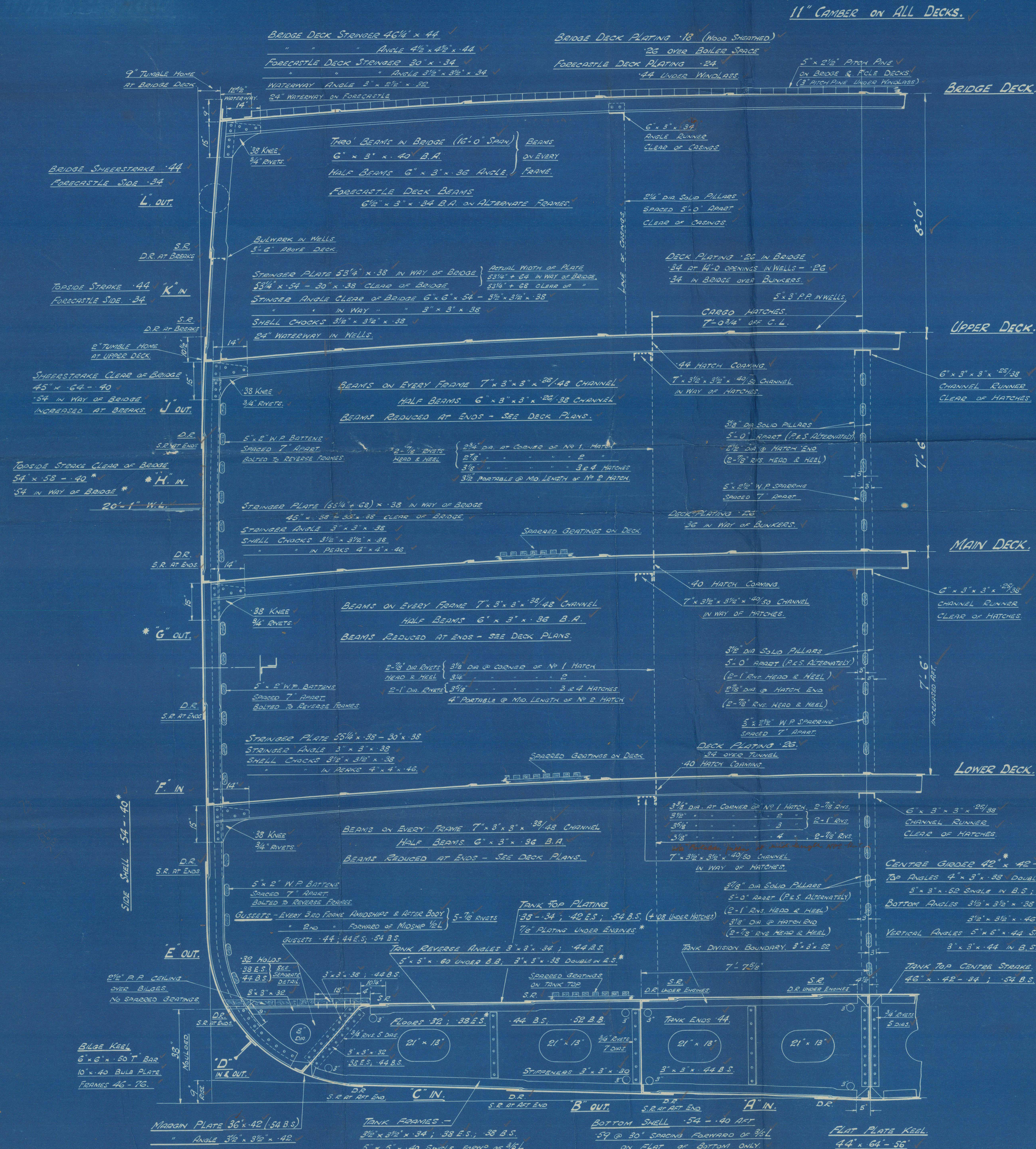
Nº 925.

DIMENSIONS.- 300'-0" B.P. x 44'-0" MLD. x 25'-0" MLD (TO UPPER DECK)

MIDSHIP SECTION.

SCALE 1/2" = 1 FOOT.

TO CLASS B.S.*



EQUIPMENT NUMERAL.-

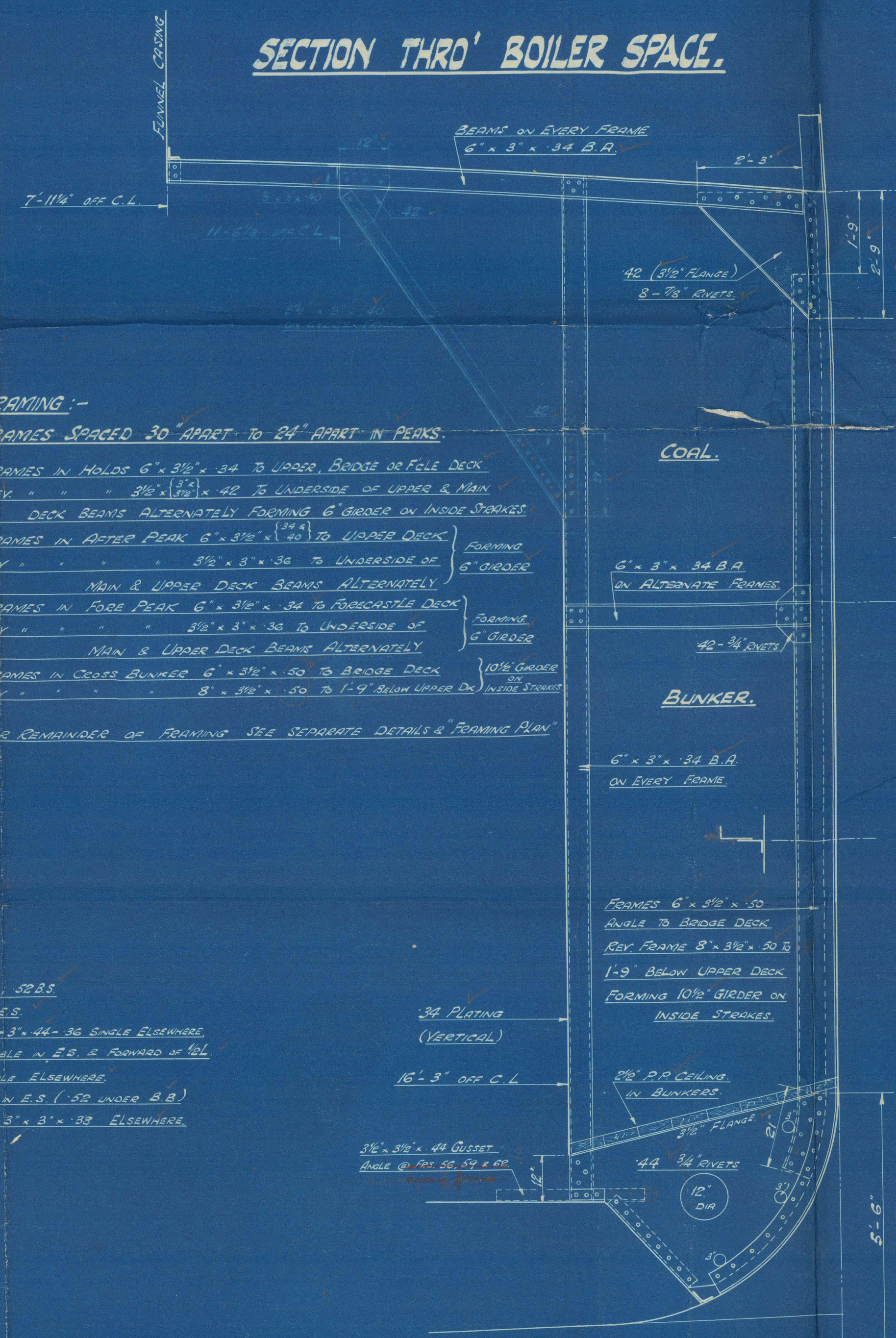
HULL	200 x 44 x 25 = 194.0
FORECASTLE	24 x 44 x 25 = 26.4
BRIDGE	24 x 44 x 25 = 26.4
STEERING GEAR HOUSE	12 x 12 x 12 = 1.7
CASINGS & M/T HOUSE	12 x 12 x 12 = 1.7
CHARTS HOUSE	12 x 12 x 12 = 1.7
CHART HOUSE	12 x 12 x 12 = 1.7
	2382.0

EQUIPMENT.-

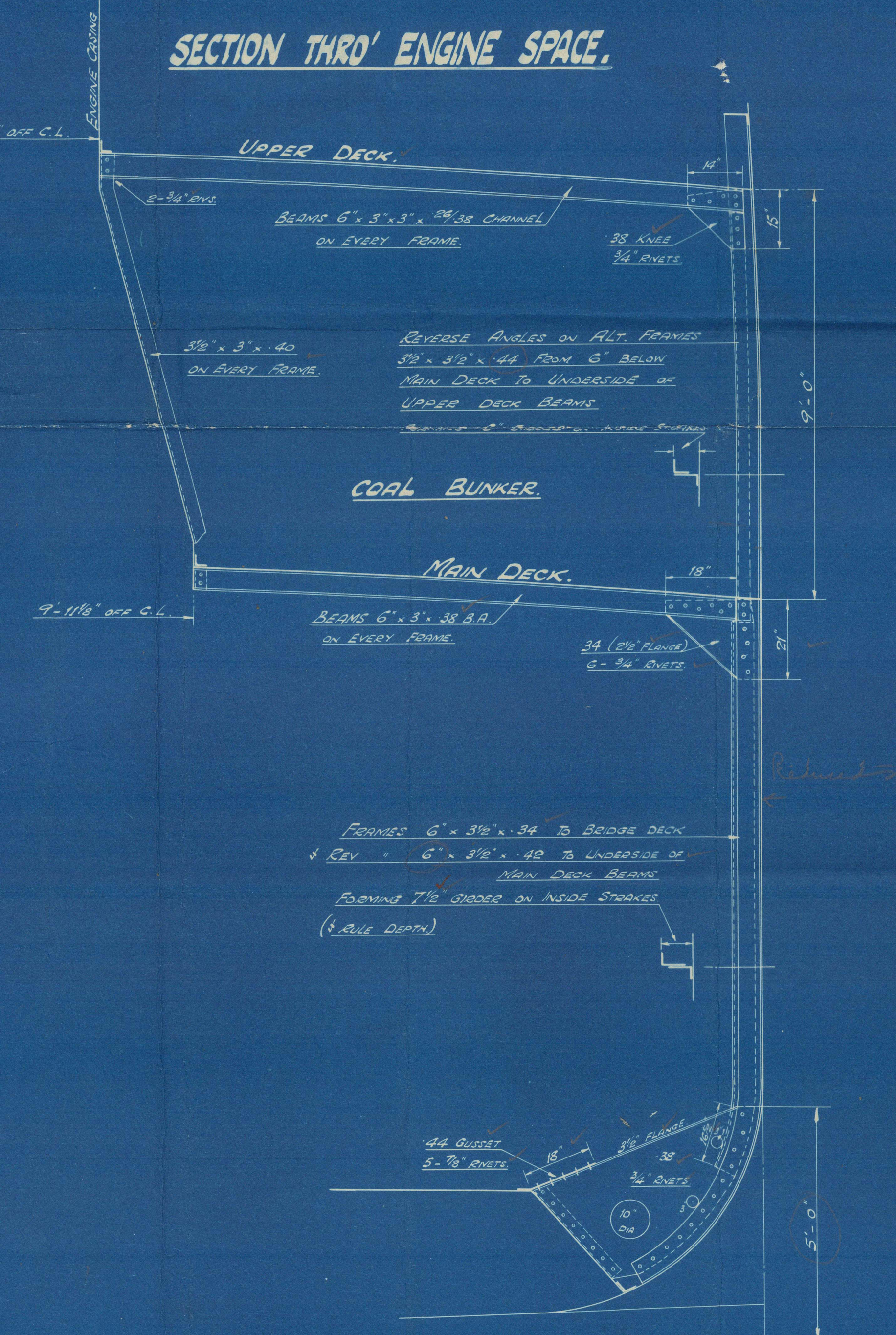
- 2 BOWER ANCHORS EACH 40 CENTS STOCKLESS
- 1 STEAM 18" EX. STOCK
- 1 KEDGE 5"
- 240 FMS 1 1/2" STUD CHAIN CABLE
- 75 3/4" STEEL WIRE
- 105 3/4" TOWLINE
- 2 @ 90 FMS 2 1/4" STEEL WIRE
- 2 @ 90 FMS 3/4" MANILLA WARE
- 4 HEAVING LINES

STEM 8" x 2 1/4" STERNPOST AS SUBMITTED

SECTION THRO' BOILER SPACE.

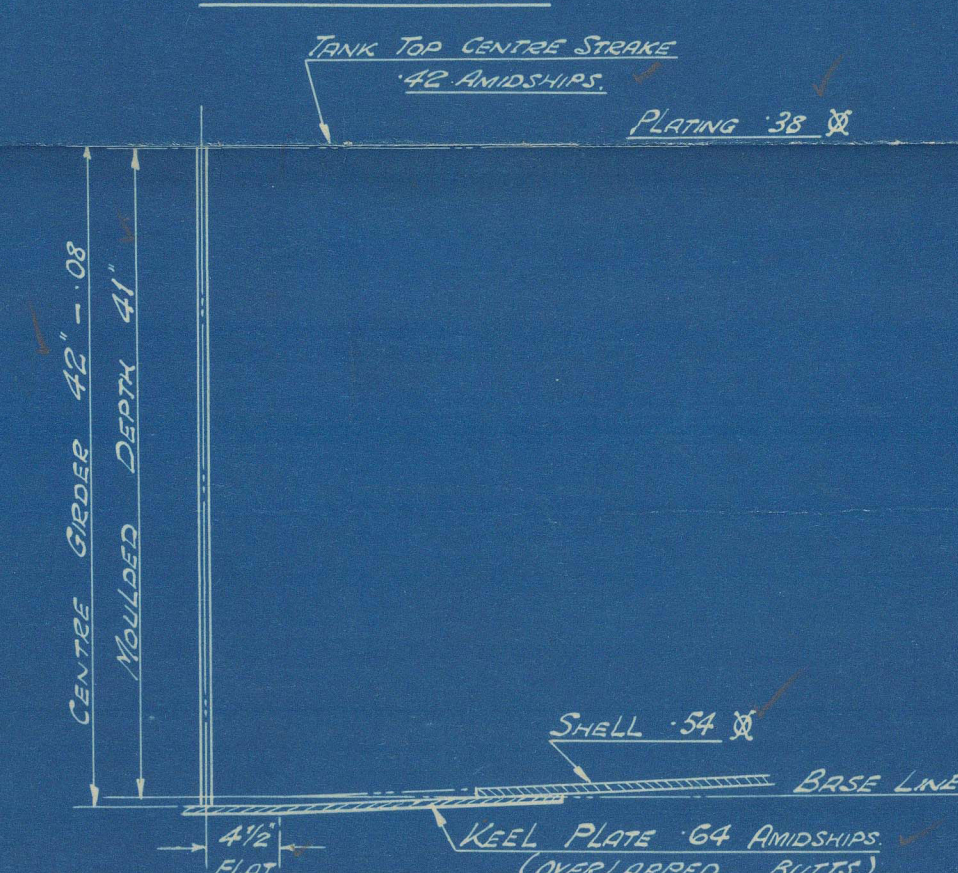


SECTION THRO' ENGINE SPACE.



SECTION THRO' CENTRE GIRDER

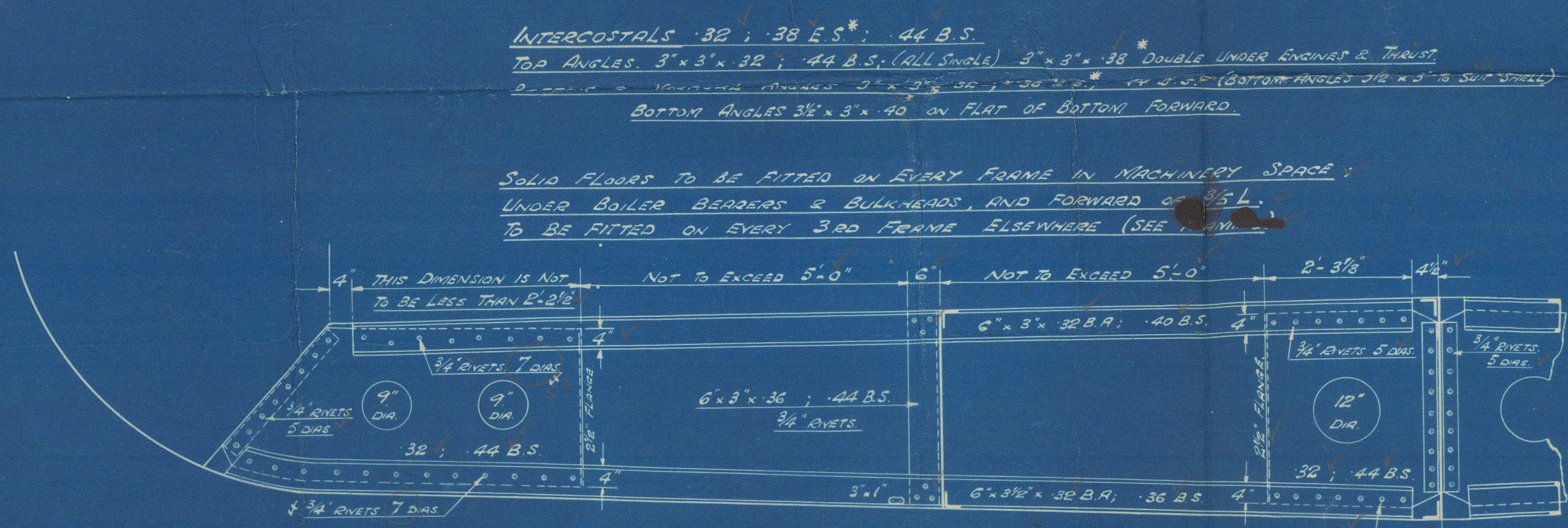
SCALE 1" = 1 FOOT.



* OWNERS EXTRA SCANTLINGS.

ITEM	SIZE	INCREAS	REMARKS
FLOORS UNDER ENGINES	38	+ 06 x 44	UNDER BEAMS ONLY
REVERSE ANGLES UNDER ENGINES	38	+ 06 x 44	REVERSE ANGLES UNDER ENGINES
INTERCOSTALS UNDER ENGINES	38	+ 06 x 44	INTERCOSTALS UNDER ENGINES
TOP ANGLES	38	+ 06 x 44	TOP ANGLES
KEEL	38	+ 06 x 44	KEEL
RUDDER STOCK	38	+ 06 x 44	RUDDER STOCK
SHELL STIFFENERS 6" x 4"	38	+ 06 x 44	SHELL STIFFENERS 6" x 4"
DOUBLE BOTTOM	38	+ 06 x 44	DOUBLE BOTTOM
CABLE	38	+ 06 x 44	CABLE
ANCHORS	38	+ 06 x 44	ANCHORS
TANK TOP PLATING UNDER ENGINES	38	+ 06 x 44	TANK TOP PLATING UNDER ENGINES

DETAIL OF OPEN FLOORS.



B.C.(3)
Engineer
L.P.
Pilot
Ship
Master

1. J. J.

Q

And. Midship Section.

Cammell Laird & Co.

Nº Q25.

12 - 5 - 26.

"Argual".



© 2021

Lloyd's Register
Foundation

014325-014334-0144

Nº 925.

DIMENSIONS. - 30

MIDSHIP

SCALE $\frac{1}{2}$ " = 1 FT

TO CLASS B.

Go
British Corporation
DATE 6-5-26
SHIP DEPARTMENT

5/8 "Algal"

12-5-26

Nº 925.

Cammell Laird & Co

26. 19. 5. 26.

Latest Midship Section.

6

Midship Section

Cammell Laird & Co

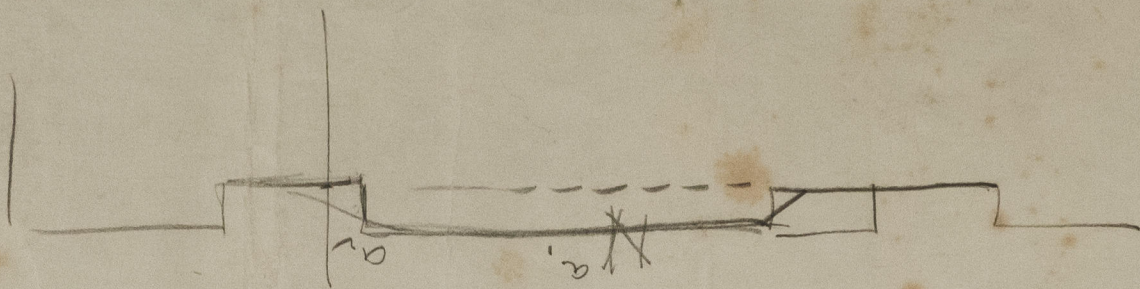
no 925.

Bag.

B.C.(3)	6/11/26
Engineers	"
Piecework	"
Logs	"
Plaster	"
Shipwright	"
Work Manager	"



© 2021
Royal Register
Foundation



© 2021

Lloyd's Register
Foundation