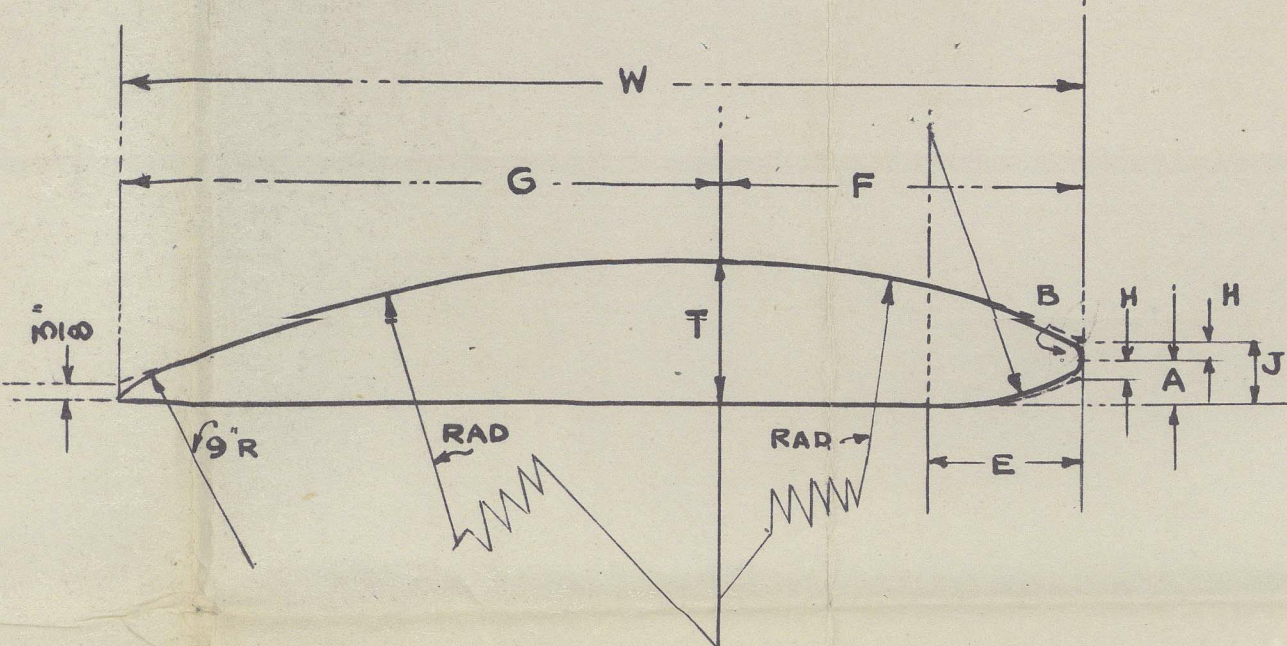


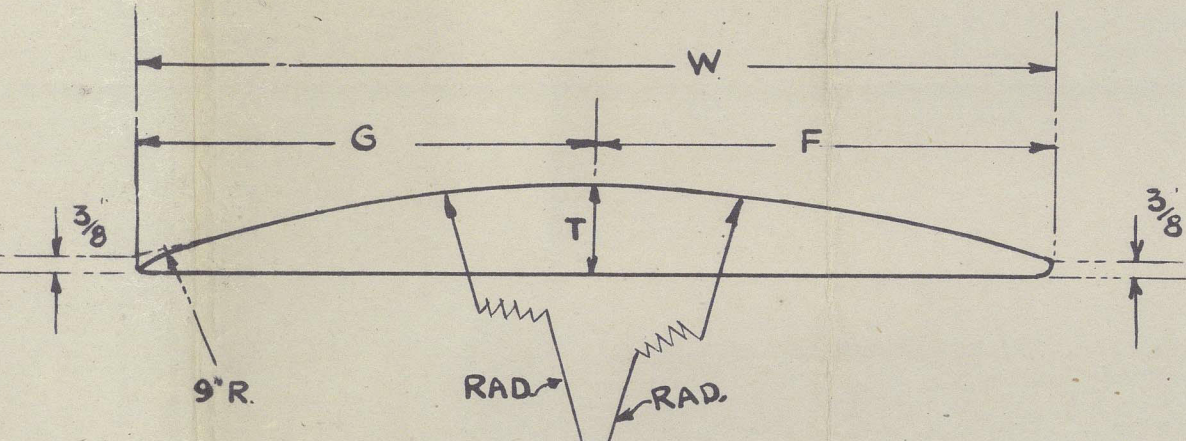
LIST OF MATERIAL

ITEM	NO. REQD.	DESCRIPTION	MATERIAL	REMARKS
1	1	PROPELLER	MANG. BRONZE	A.S. REQUIREMENTS
2	1	FAIRWATER	CAST IRON	
3	1	GLAND	MANG. BRONZE	11" O.D. x 1-4 1/2" I.D. x 1/2" THK.
4	2	1/2" PIPE PLUG	BRASS	
201	12	COLLAR STUDS	MANG. BRONZE	7/8" DIA.
203	12	1/8" HEX. HD. NUTS	MANG. BRONZE	AMER. STD. Hvy.
205	8	GLAND STUDS	MANG. BRONZE	3/4" DIA. - 2 1/4" LG.
207	8	GLAND NUTS	MANG. BRONZE	AMER. STD. HEX. HD. Hvy.

PROPELLER PARTICULARS	
NO. OF BLADES	4
DIAMETER	17'-6"
PITCH (CONSTANT)	17'-3"
PITCH RATIO	0.986
PROJECTED AREA	67.2 SQ. FT.
DEVELOPED AREA	81.2 SQ. FT.
PROJECTED AREA RATIO	0.268
DEVELOPED AREA RATIO	0.324
SPEED (KNOTS)	11.2
INDICATED HORSE POWER	2080
R.P.M.	70
DIRECTION OF ROTATION	RIGHT HAND

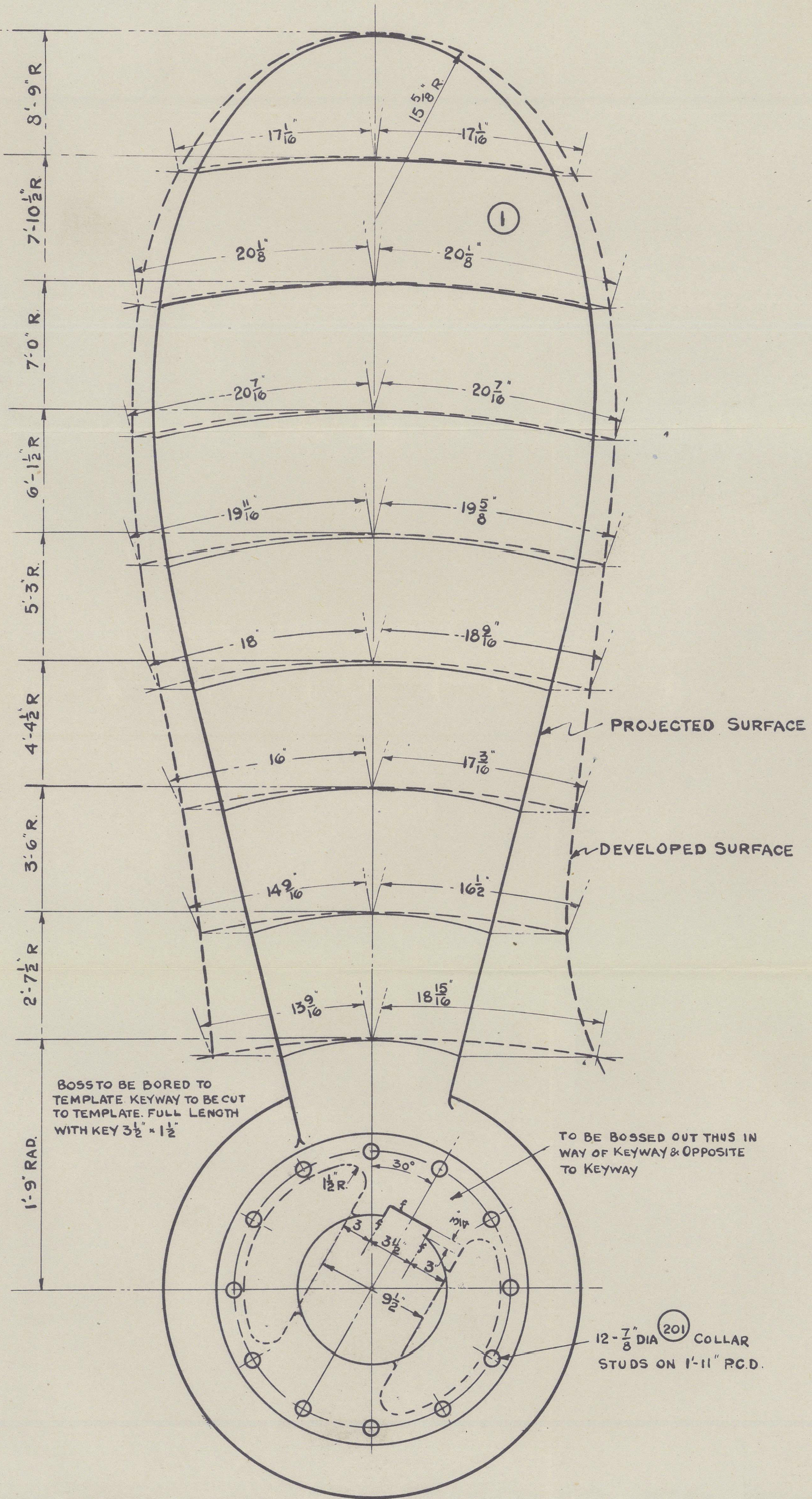


SECTIONS FROM 6 RADIUS (5'3") TO HUB

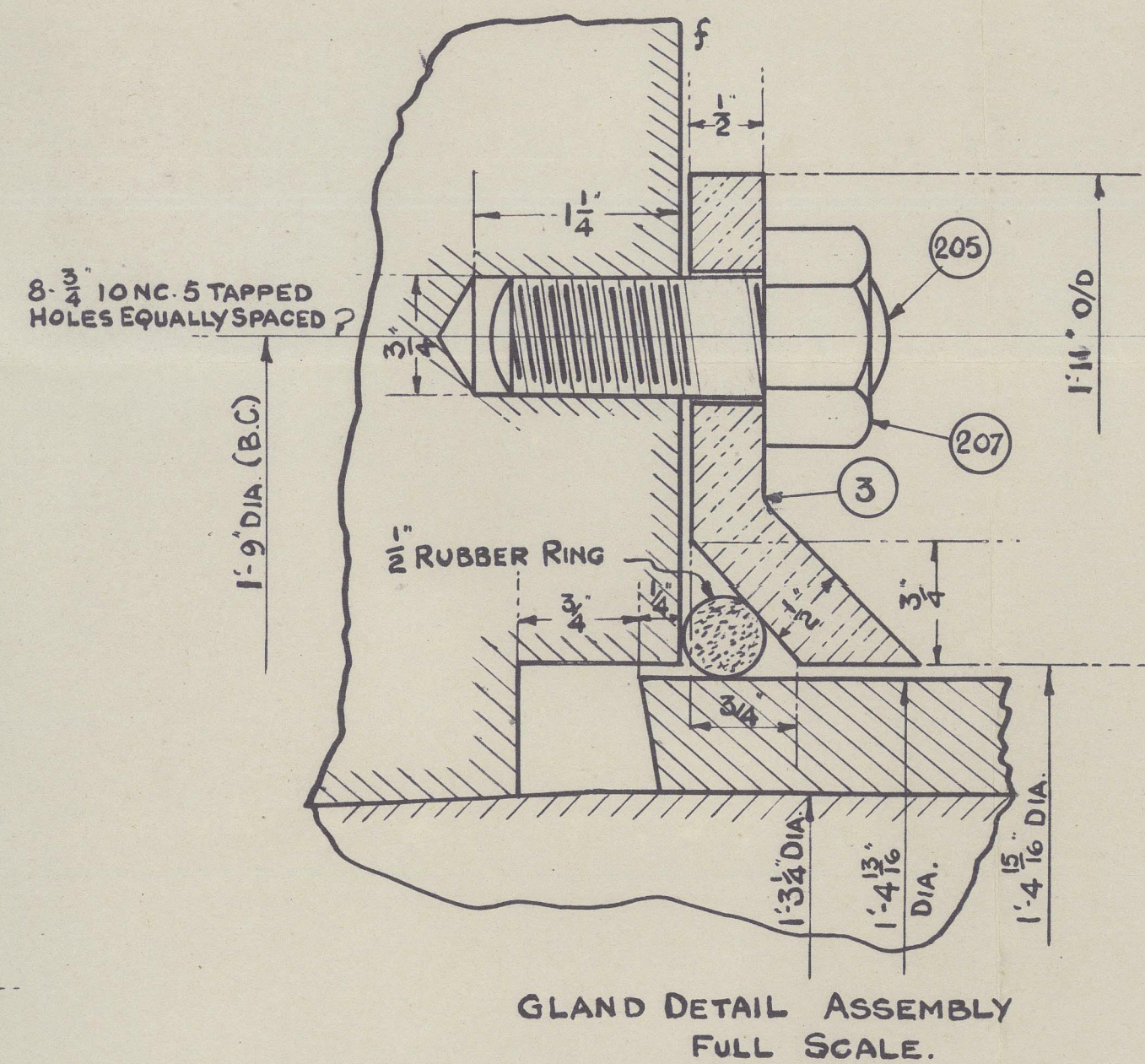
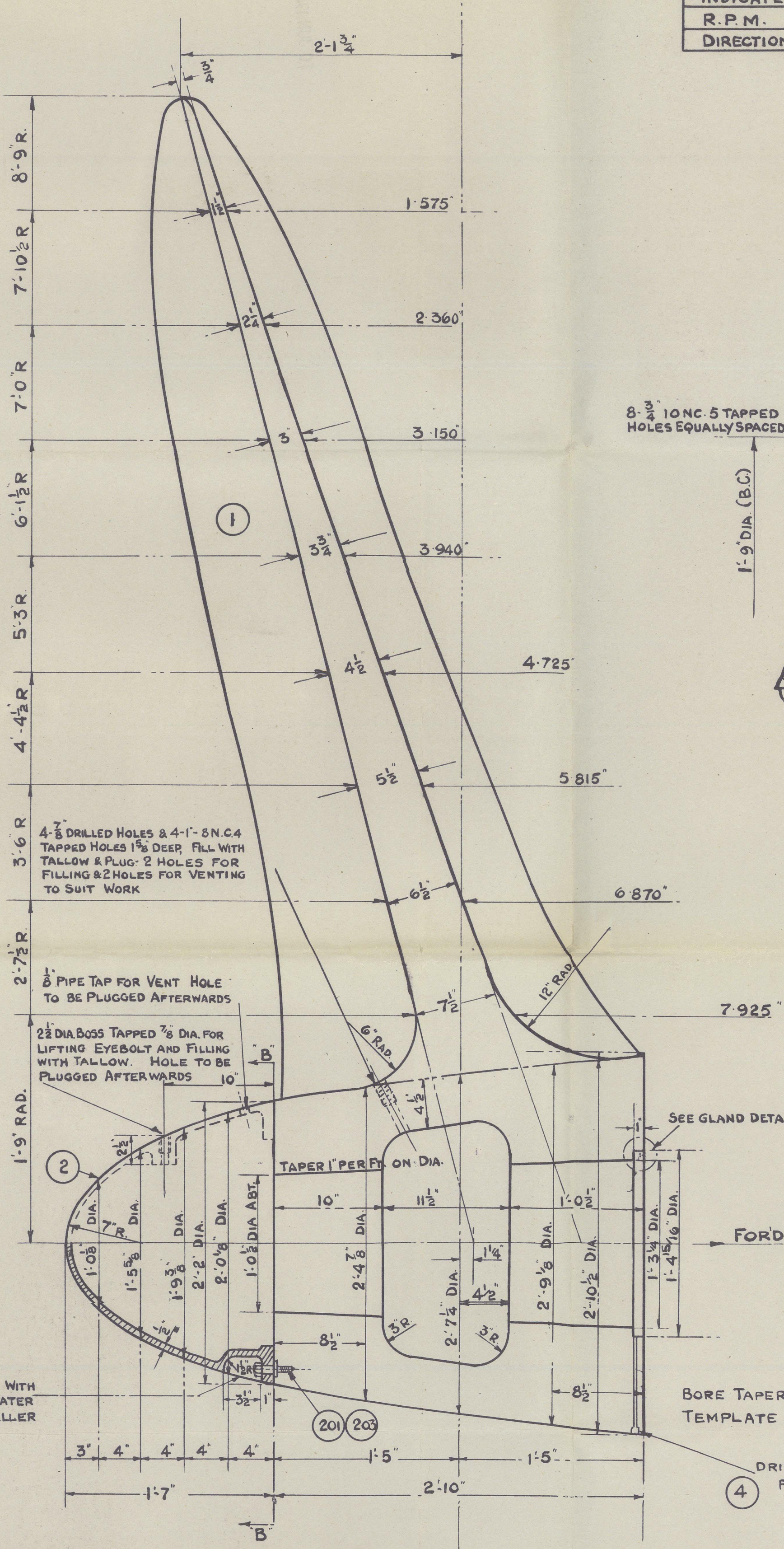


SECTIONS FROM 6 RADIUS (5'3") TO TIP

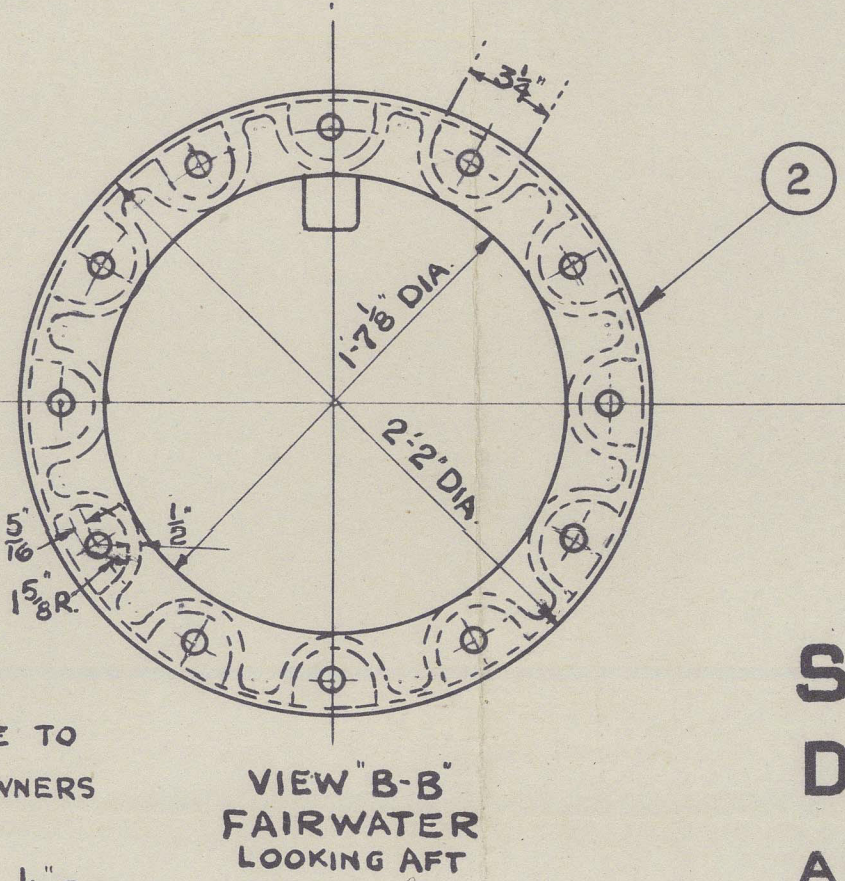
RADIUS	A	B	E	F	G	H	J	T	W
2 1'-9"	3 1/2	1 3/16	9"	11 3/8	21 1/8	1 3/8	4 1/2	7 1/2	32 1/2
3 2'-7 1/2"	2 3/16	1 1/16	6 3/8	13 1/8	17 1/8	1 1/8	3 1/2	6 1/2	31 1/2
4 3'-0"	1 3/8	1 1/16	4 1/8	15"	18 1/8	1 1/8	2 3/4	5 1/2	33 1/2
5 4'-4 1/2"	2 3/8	7/16	2 1/2	17 1/8	18 1/8	1 1/8	1 3/4	4 1/2	36 1/2
6 5'-3"	3 1/8	3/16	3 1/8	19 1/8	19 1/8	3 1/8	3 1/8	3 3/4	39 1/2
7 6'-1 1/2"	4 1/8	3/16	4 1/8	20 1/8	20 1/8	4 1/8	4 1/8	3"	40 1/2
8 7'-0"	5 1/8	3/16	5 1/8	20 1/8	20 1/8	5 1/8	5 1/8	2 1/2	40 1/2
9 7'-10 1/2"	6 1/8	3/16	6 1/8	17 1/8	17 1/8	6 1/8	6 1/8	1 1/2	34 1/2



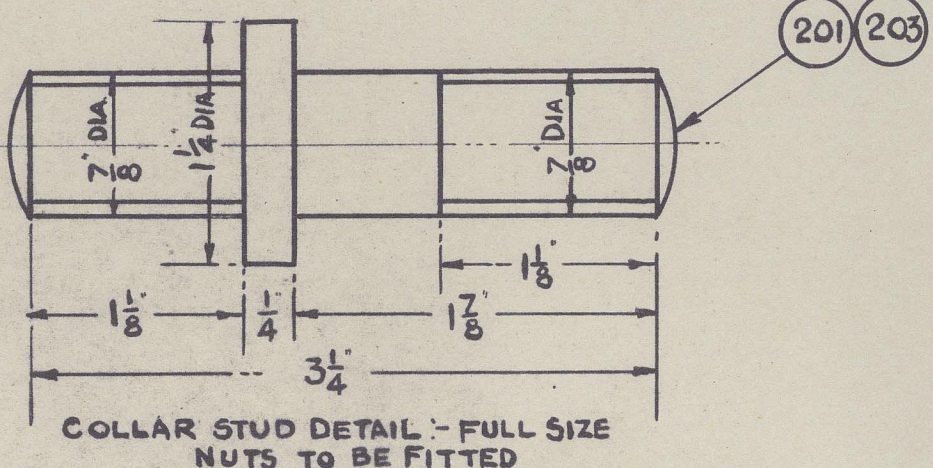
VIEW LOOKING FORWARD



NOTE: VOID TO BE FILLED WITH TALLOW OR OTHER APPROVED MATERIAL



VIEW B-B FAIRWATER LOOKING AFT



COLLAR STUD DETAIL - FULL SIZE NUTS TO BE FITTED

S.S. LEICESTER .
DETAILS OF PROPELLER
AND FAIRWATER .
SCALES: 1/2" = 1 FOOT AND FULL SIZE.

APPROVED BY THE NORWEGIAN VERITAS OCTOBER 4, 1947
APPROVED BY LLOYDS REGISTER OF SHIPPING OCTOBER 15, 1947
APPROVED BY AMERICAN BUREAU OF SHIPPING AUGUST 20, 1947

32808

MS 30

Propeller

S/S Leicester.

London

10 JUN 1949



© 2021

Lloyd's Register
Foundation

014124 - 014134 - 0091