

3 SEP 1959

# GENERAL ARRANGEMENT OF 250 CU. YD HOPPER BARGE

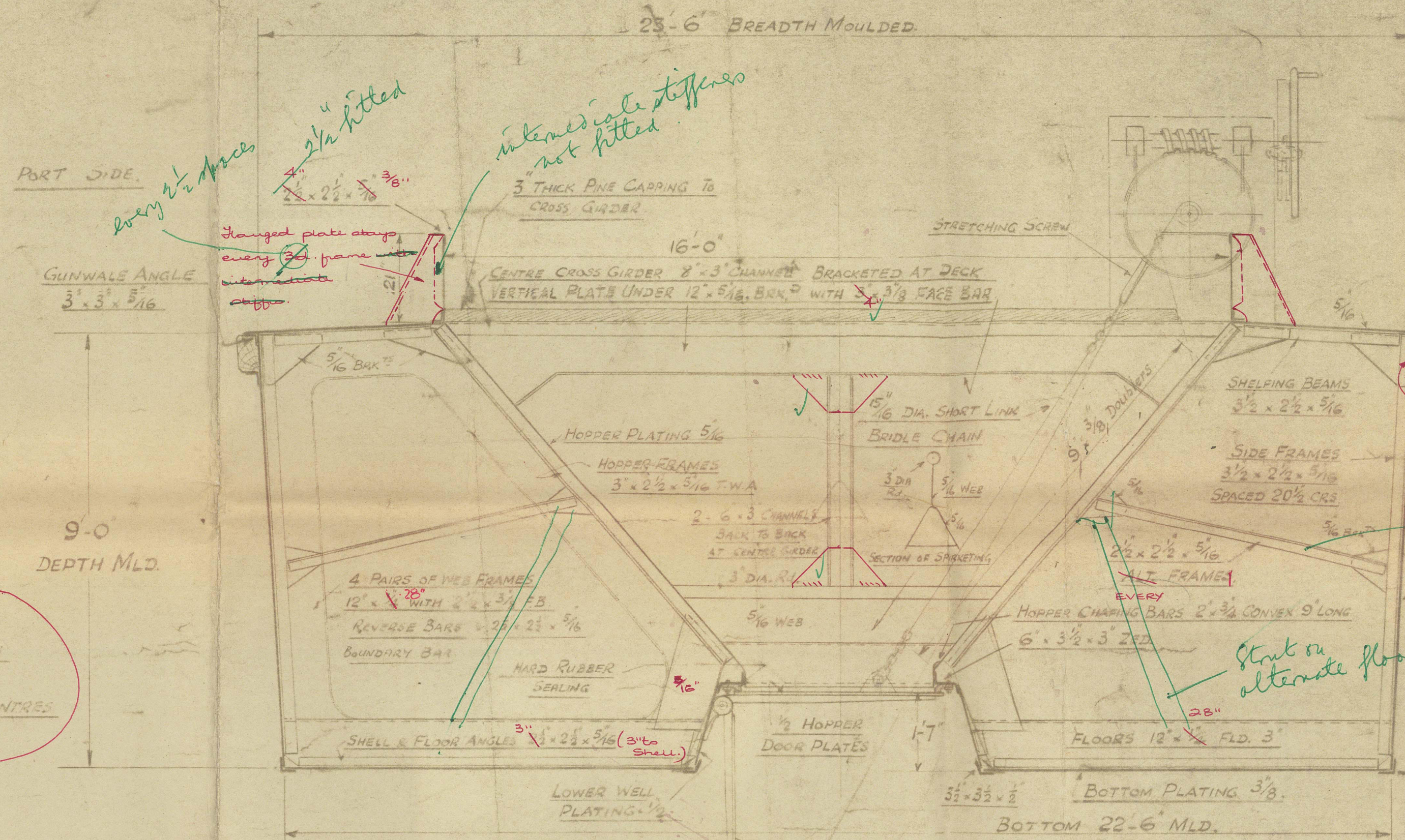
SHOREHAM HARBOUR TRUSTEES, 100A- (see letter)

## PRINCIPAL DIMENSIONS

LENGTH B.P.	196-0
BEAM AT DECK	23-6
BEAM AT CHINE	22-6
DEPTH MOULDED	9-0
DRAFT MAXIMUM	8-0
LIGHT WATERLINE	APPROX 2-2

Class 100A-11 "Hopper Barge" "In service within 5 miles from Shoreham Harbour"

END HOPPER SPICE BULKHEADS 5/16 PLATING  
STIFFENERS 3-2 1/2 x 5/16 ANGLES SPACED 24 CENTRES  
BUDYANCEY SPACE BULKHEADS 1/2 PLATING  
STIFFENERS 2 1/2 x 5/16 ANGLES SPACED 30 CENTRES  
To be considered on plan to be submitted.



MIDSHIP SECTION

SCALE - 1/2" = ONE FOOT

## OUTFIT & FITTINGS

- DOOR CHAINS 5/8 DIA SHORT LINK
- 5" DOUBLE 8" DIA TUBULAR BOLLARDS
- 4" SINGLE 8"
- 1" HEAVY DUTY TUBE TOWING BOLLARD
- ANCHOR WINDLASS
- 15 ft x 6 in 50 cwt. flange, 1 stockless Bower Anchor of 5 1/2 cwt.
- NAVES TYPE STEERING WHEEL
- 6 DIA COWL VENT 1st P.S.
- 6 DIA MUSHROOM VENT 2nd P.S.
- COLLAPSIBLE STANCHIONS & CHAIN LIFE LINES
- 1 3/4" OIL NAVIGATION LAMP
- 2 STEADY
- 3-100 LAMP
- 3" DIA VERTICAL STANDPIPE ONE IN EACH
- WIND COMPARTMENT 1 IN EACH PLATE, IN EACH END COMPARTMENT WITH STRAIN BOXES
- 2 BORE 30.3.20.1.1 SEMI-ROTARY PUMP GAT OF HOSE
- WORKING WHEEL HAND OPERATED DOOR GEAR

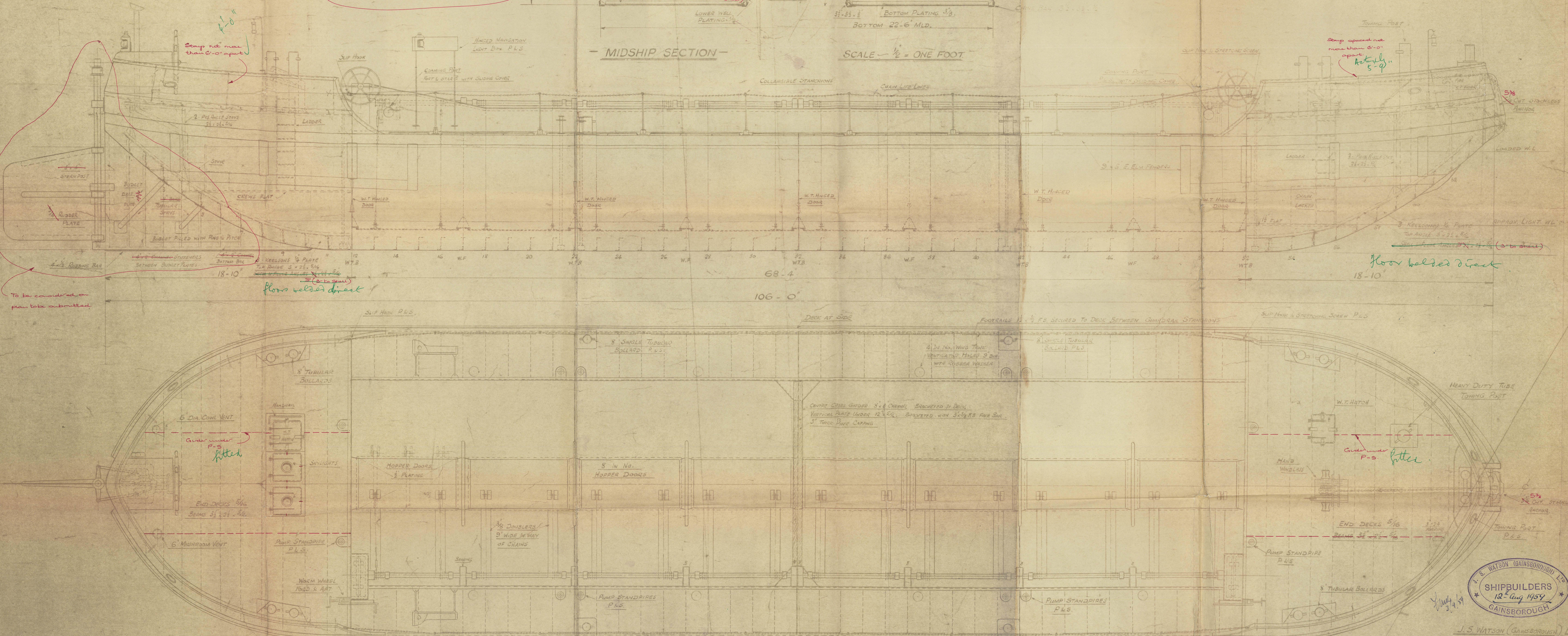
not fitted class needed.

not welded. Hinged frame welded. Start on alternate frames.

Start on alternate floors.

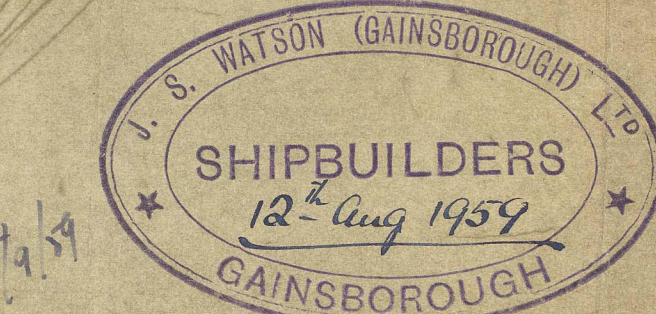
Stap spaced not more than 6-0" apart. Actually 5-9"

Floor welded direct



PROFILE & PLAN

SCALE - 3/8" = ONE FOOT



J.S. WATSON (GAINSBOROUGH) LTD  
SHIPBUILDERS

GAINSBOROUGH 17th April 1959



|| S.H.M 3 ||  

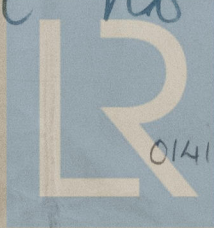
---

J. S. Watson (Samsborough) Ltd Yard no 1776.

GENERAL ARRANGEMENT  

---

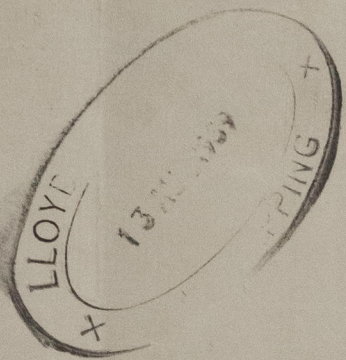
Hul FE Rpt no - 65786.



© 2021  
Lloyd's Register  
Foundation



0140



© 2021

Lloyd's Register  
Foundation