

BUILDING NR. 185.

LONGITUDINAL SECTION AND PLANS.

- DIMENSIONS -

LENGTH BETWEEN P.P. 180'-0" - 54.86 MET.
BREADTH MOULDED. 29'-6" - 8.99 --
DEPTH MOULDED TO MAIN DECK. 14'-6" - 4.42 --

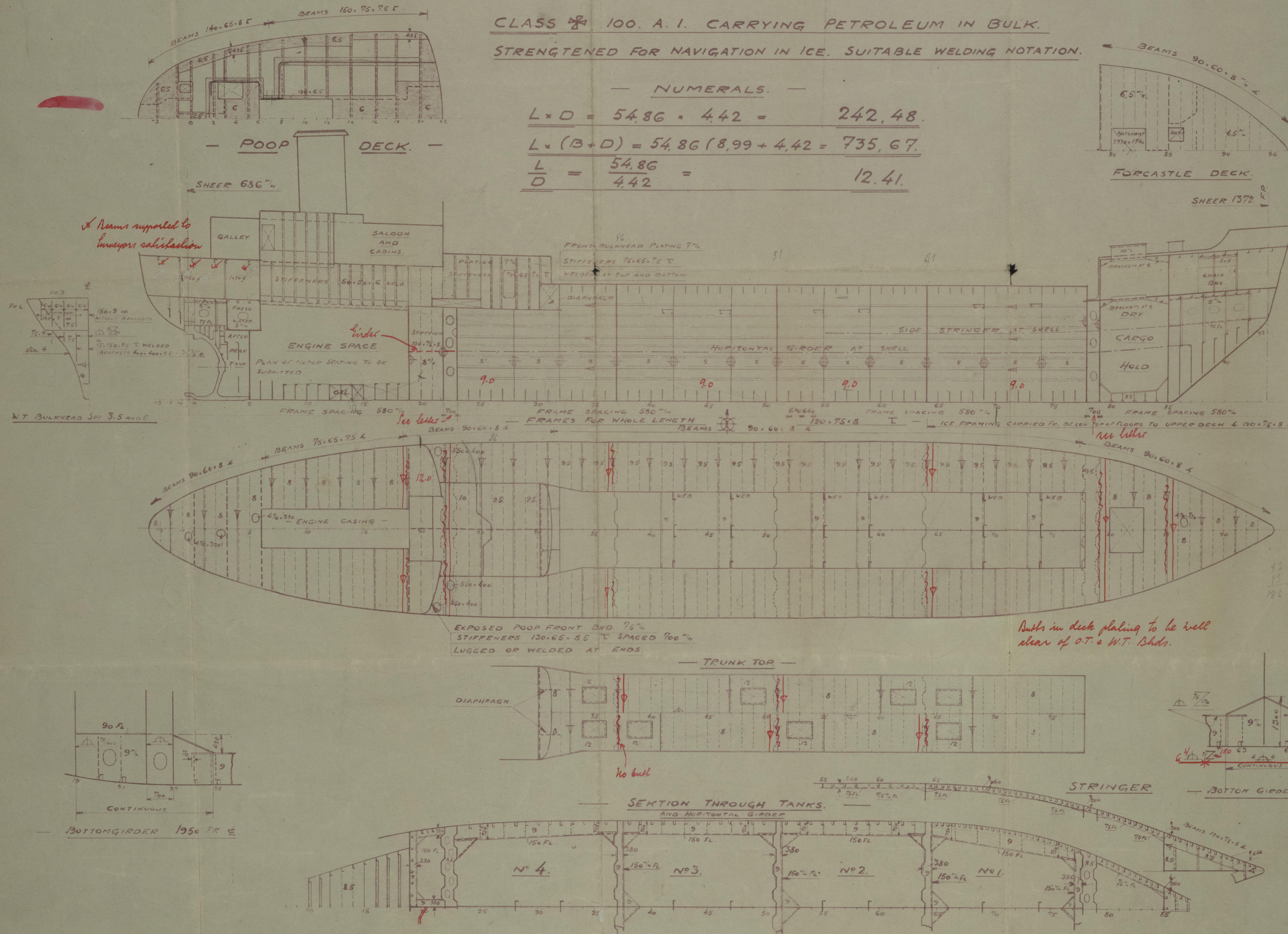
CLASS * 100. A. I. CARRYING PETROLEUM IN BULK.
STRENGTHENED FOR NAVIGATION IN ICE. SUITABLE WELDING NOTATION.

- NUMERALS -

$$L \times D = 54.86 \times 4.42 = 242.48.$$

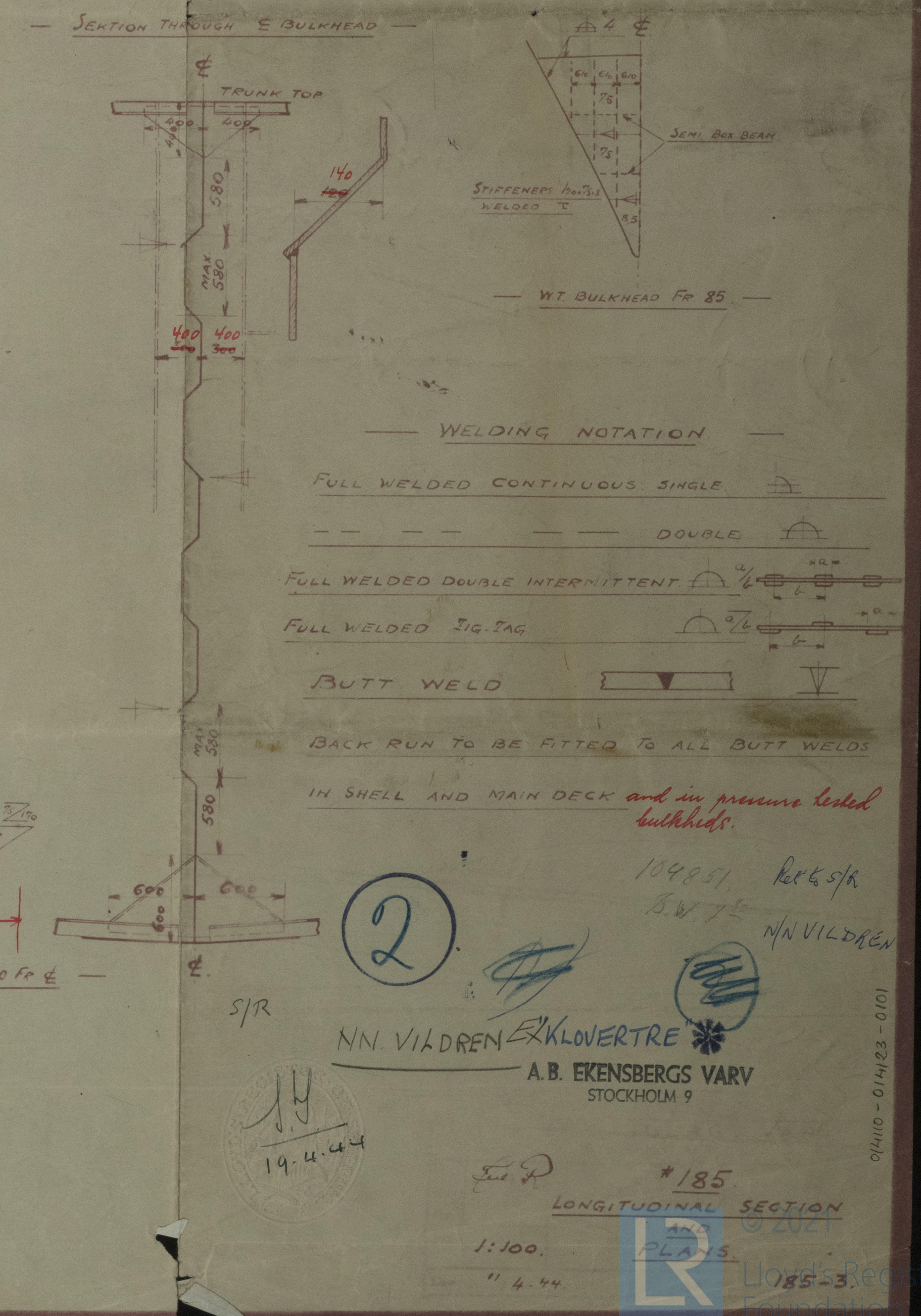
$$L \times (B+D) = 54.86 (8.99 + 4.42) = 735.67.$$

$$\frac{L}{D} = \frac{54.86}{4.42} = 12.41.$$



- EQUIPMENT LETTER 'J' -

2 BOWER ANCHORS (STOCKLESS) EACH 850 KG.
1 " " " " " " 740 --
1 STREAM " " EXCL. STOCK 240 --
STUD CHAIN CABLE 3/15" 385 MET
TOW LINE 70" WIRE 1x135 MET.
STREAM ANCHOR WIRE 76" 1x110 MET
HAWSEERS & WARPS. WIRE 57" 1x165 --
" " " " WIRE 44" 1x165 --



014110 - 014123 - 0101

