

CONNECTION OF FASHION
PLATE & CAST STEEL

STEM (P. SIDE)
LOOKING TO PORT

FASHION PLATE
LOOKING AFTWARD

MATERIAL	APPROX FOR ONE	WEIGHT SHIP
LOWER PART OF STEM (FORGED STEEL)	1.200	
MIDDLE " " (CAST STEEL)	1.140	
UPPER " " (MILD STEEL)	2.648	

GENERAL NOTES:-

1. PORT & STBD SIDE TO BE SIMIL.
2. SPECIAL CARE TO BE PAID FOR WELDING JOINT OF STEM
3. FORGING AND CASTING ARE TO BE SUBJECTED TO TENSION AND BEND TESTS AND THE REQUIREMENT OF LLOYD AND N.K. RULES ARE TO BE COMPLIED WITH

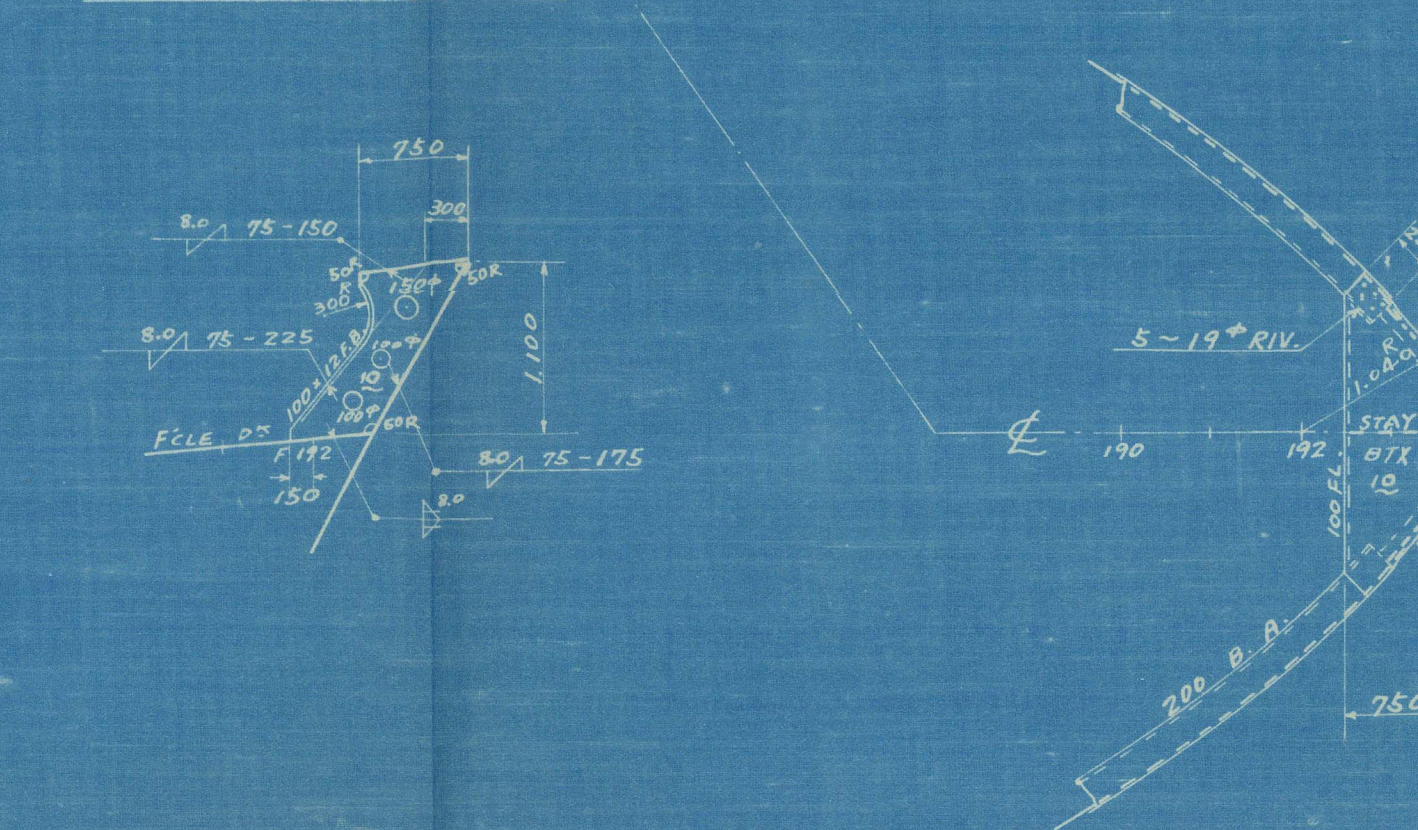
ITEM:-

水型製作	現國場所掌	K(1421)140	1-3
鑄鍛造	長崎製鋼所所掌	K(1421)140	1-2
鍛鋼加工	鉄工場	K(1421)140	1-1
機械加工	造機部所掌	K(1421)140	1-1

LLOYD 隅肉溶接規定適用

SECTION AT C LINE
LOOKING TO P. SIDE

BULWARK TOP PLAN



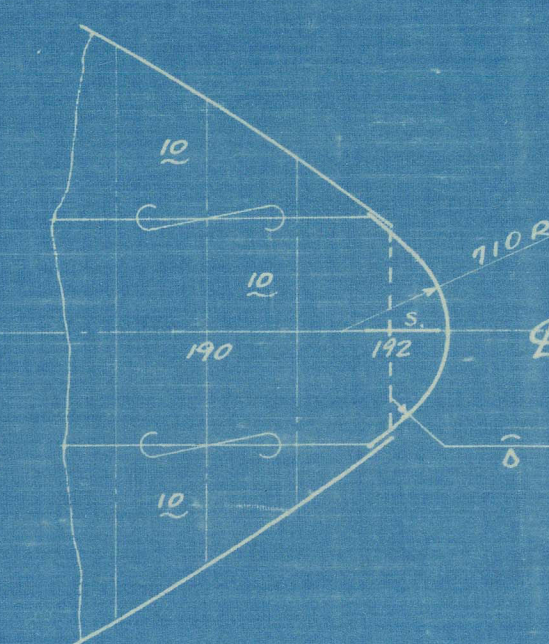
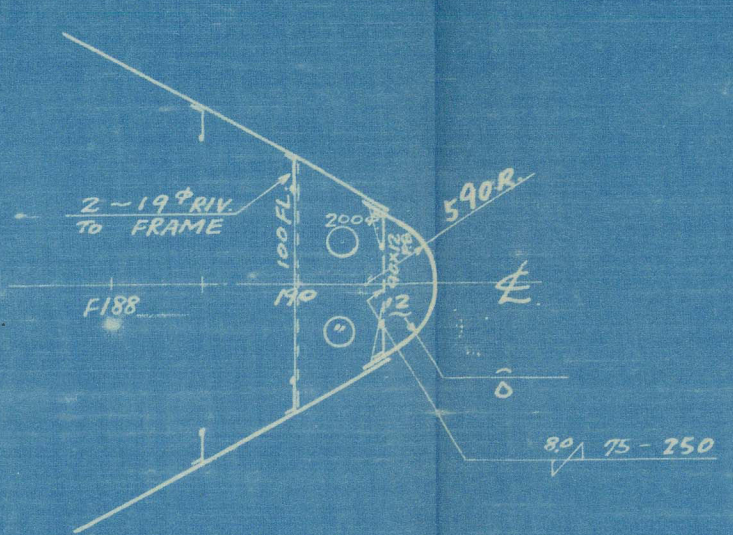
NO. 2 BREAST HOOK
1/50

NO. 4 B. HOOK
1/50

NO. 1
BREAST HOOK PLAN

F. C. DECK PLAN
"SEE FILE D. PLAN"

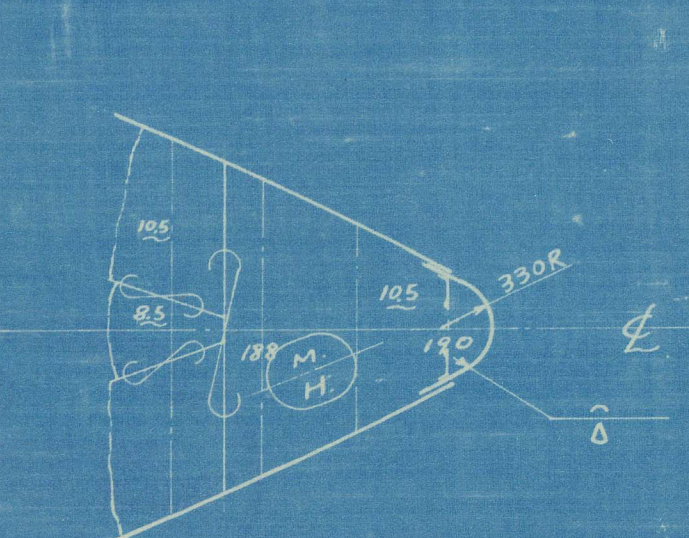
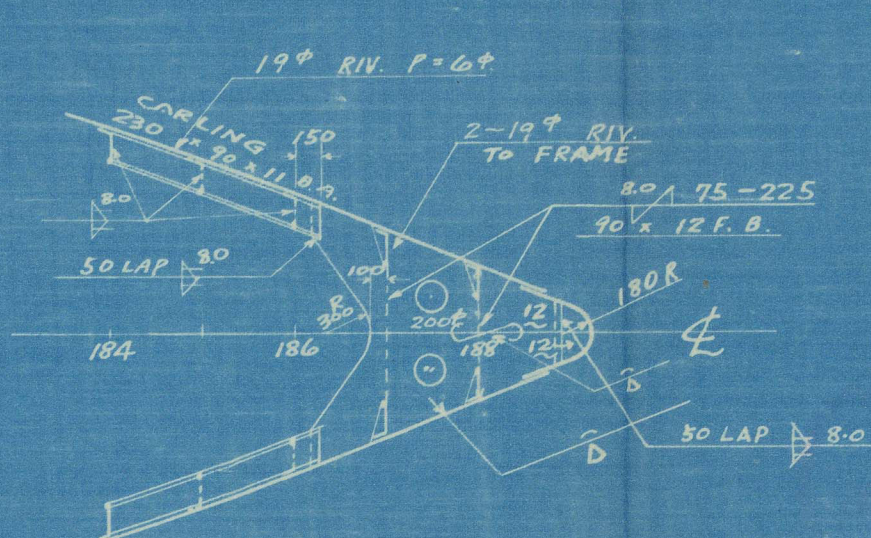
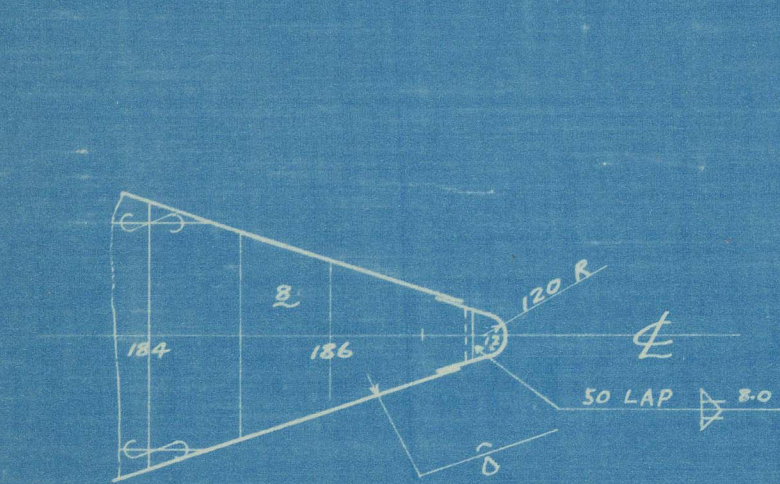
F. 188 后面
1/50



2ND DECK PLAN
"SEE 2ND DECK PLAN"

NO. 3
BREAST HOOK PLAN

UPPER DECK PLAN
"SEE UPPER DECK PLAN"

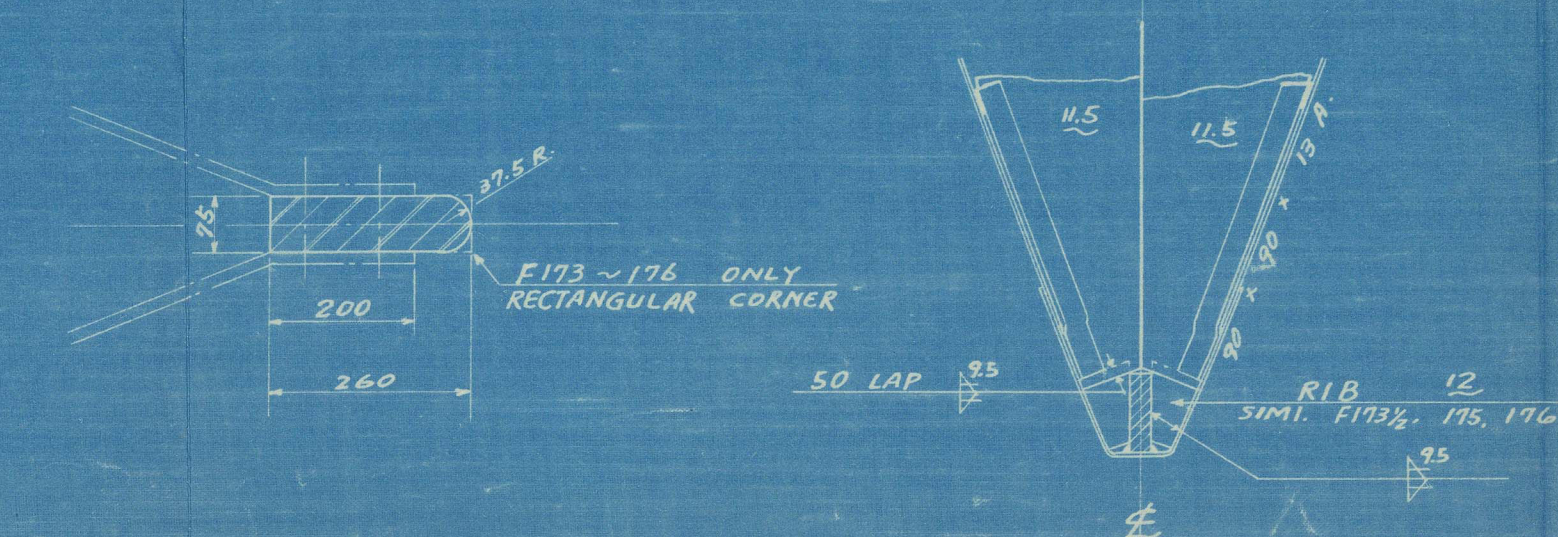


SECTION AT F178
LOOKING FORWARD (1/25)

SECTION AT F174
LOOKING FORWARD (1/25)

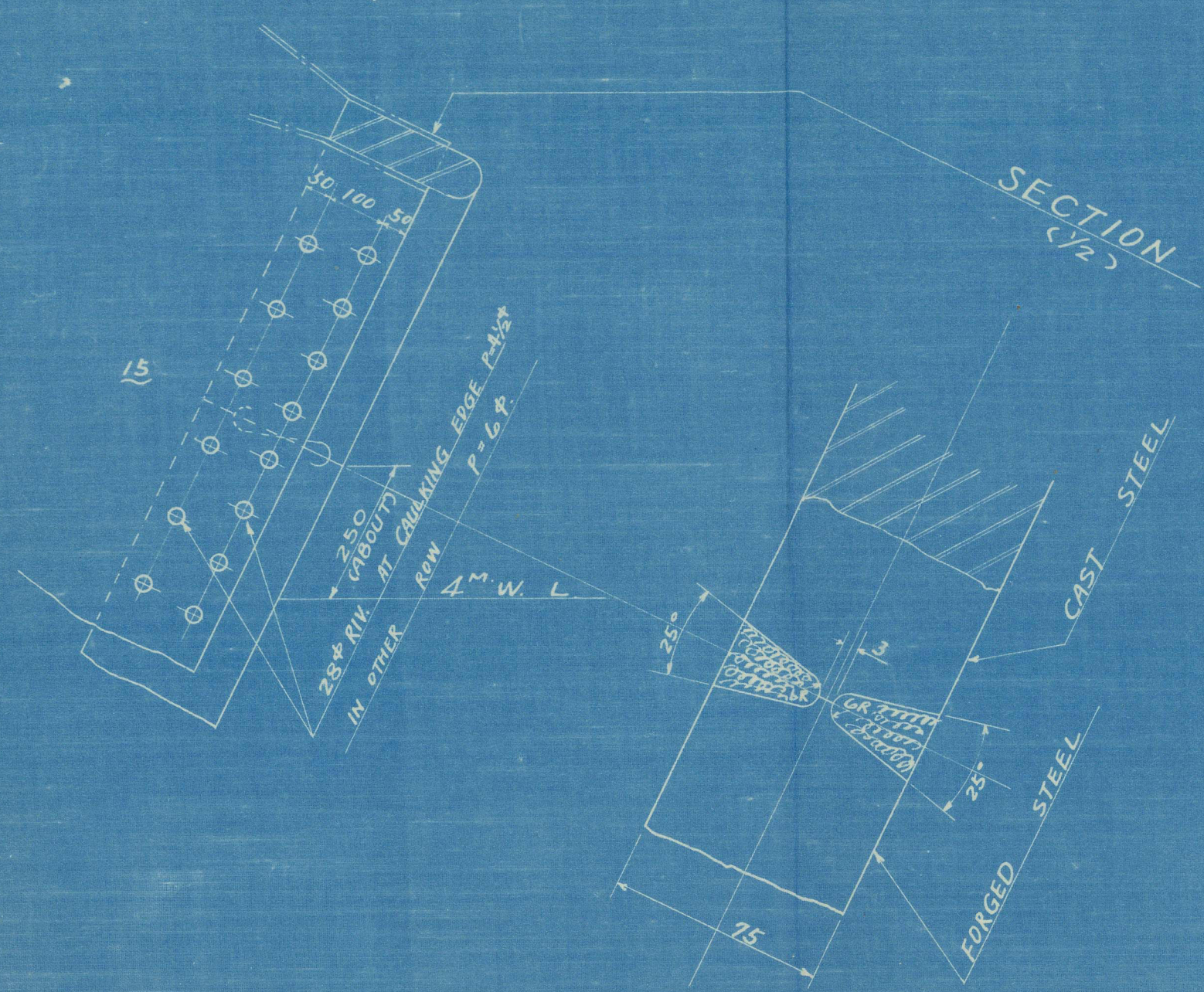
SECTION AT F177
LOOKING FORWARD (1/25)

TYPICAL SECTION
OF FORGED STEM (1/10)



DETAIL OF WELD
CASTING TO FORGING
(1/10)

SECTION (1/2)



圖面未定
1. 昭和26年5月12日訂正(4)門記入33

ASO MARU

L.R.
N.K.

STEM
(FINISHED PLAN)

SCALE

1/10, 1/25, 1/50

140.0' x 19.0' x 10.5'

進圖者	3 枚
製圖者	3 枚
図面	1 枚
校	1 枚
訂正	2 枚

設計者

監製者

製図者

校核者

訂正者

昭和26年5月12日訂正(4)門記入33

1/10, 1/25, 1/50

12
11
10

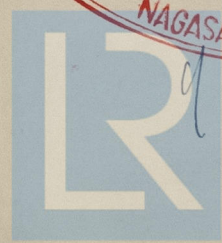
Aso MARU ! ★

Stem.

RECORDS DEPT.
LONDON

7

WEST JAPAN HEAVY-INDUSTRIES, LTD.
SHIP DESIGNING OFFICE
NAGASAKI SHIPYARD & ENGINE WORKS
REG. NO.
DATE NOV 7 1951
NAGASAKI



© 2021
J. Shiro

Lloyd's Register
Foundation
NOV 12 1951

014059-0114067-0003