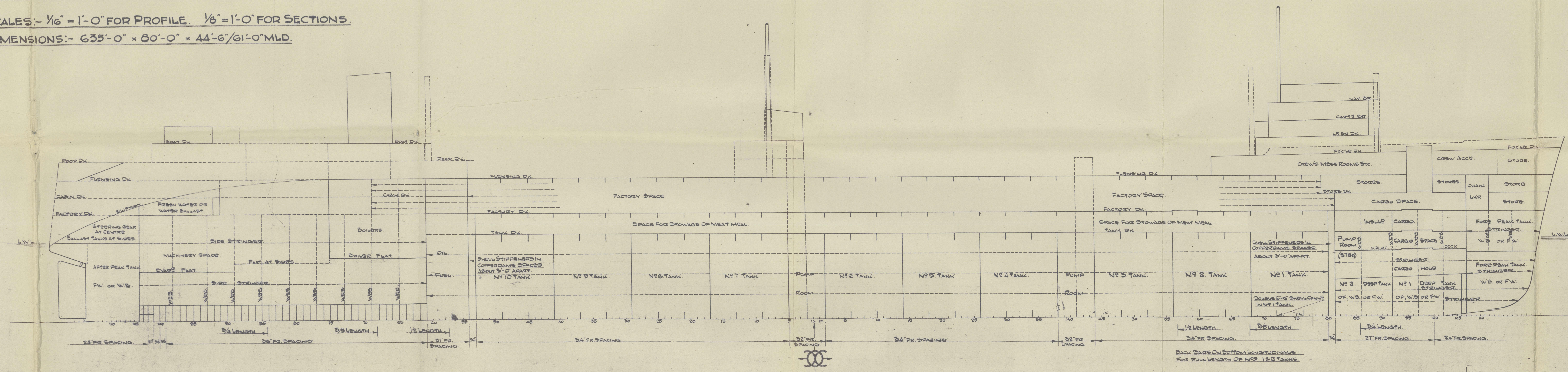
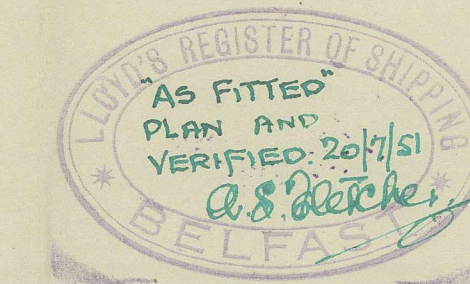


No 1384. "JUAN PERON"

FRAMING PROFILE. (As Fitted.)

Scale:- 1/6" = 1'-0" FOR PROFILE. 1/8" = 1'-0" FOR SECTIONS.

DIMENSIONS:- 635'-0" x 80'-0" x 44'-6"/61'-0" MLD.



FRAMES 11'-2 1/2" x 45" B.A.
(ABOVE FLUSHING DECK -
6'-2 1/2" x 44" B.A. SCARFED)
FRAMING IN WAY OF TRIMMING
TANKS TO BE CONSIDERED ON
ART END FRAMING PLAN.

FRAMES TO FACTORY DECK 12'-2 1/2" x 50" B.A.
WEB FRAMES BELOW FLAT 20'-0" WIND 12'-0" B.A. FACE DAK DOUBLE
STIFFENERS 20'-0" x 44" 4'-4" x 54" AND SINGLE 19'-0" SPAN

WEB FRAMES ABOVE FLAT 20'-0" WIND 12'-0" B.A. FACE DAK DOUBLE
STIFFENERS 20'-0" x 44" 4'-4" x 54" AND SINGLE 19'-0" SPAN

FRAMES FACTORY TO FLUSHING DECK 10'-2 1/2" x 44" B.A.
ABOVE FLUSHING DECK 6'-2 1/2" x 44" B.A. SCARFED.

ART END FRAMING, OIL FUEL BUNKERS, SCARFING ARRANGEMENTS,
AND DOUBLE BOTTOM SCANTLING WILL BE SUBMITTED LATER.

TRANSVERSE FRAMES TO FACTORY DECK 12'-2 1/2" x 50" B.A.
TWEEN DECK LONGITUDINALS BETWEEN FLUSHING & FACTORY DECK 7'-2 1/2" x 50" B.A. SPACED 22"

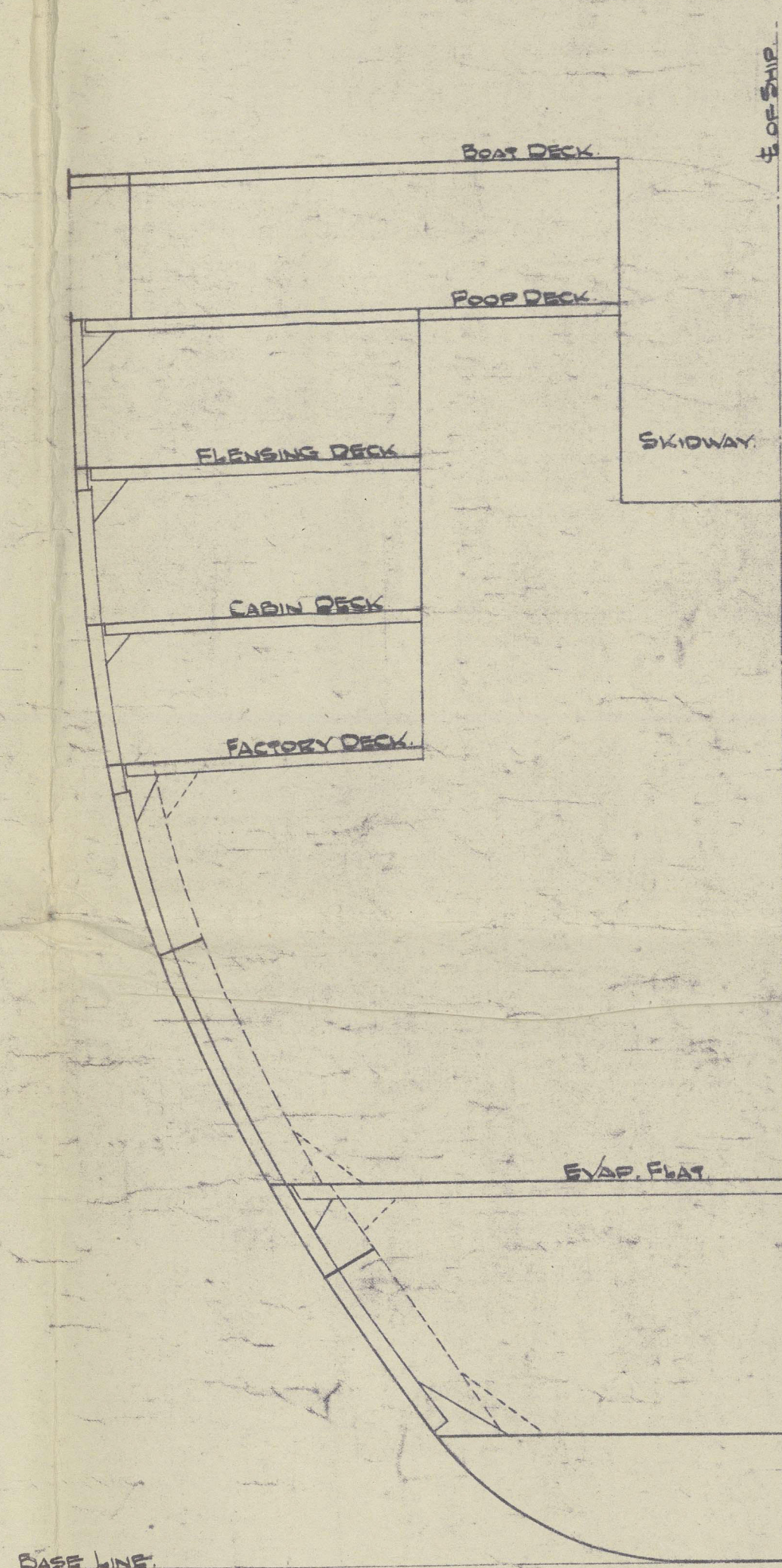
ALL BULB ANGLES ARE N.B.S.
" " PLATES " O.B.S.

ADDITIONAL STRENGTHENING OF BOTTOM FORWARD,
STRINGERS, WEB FRAMES AND DEEP TANKS,
WILL BE SUBMITTED LATER.

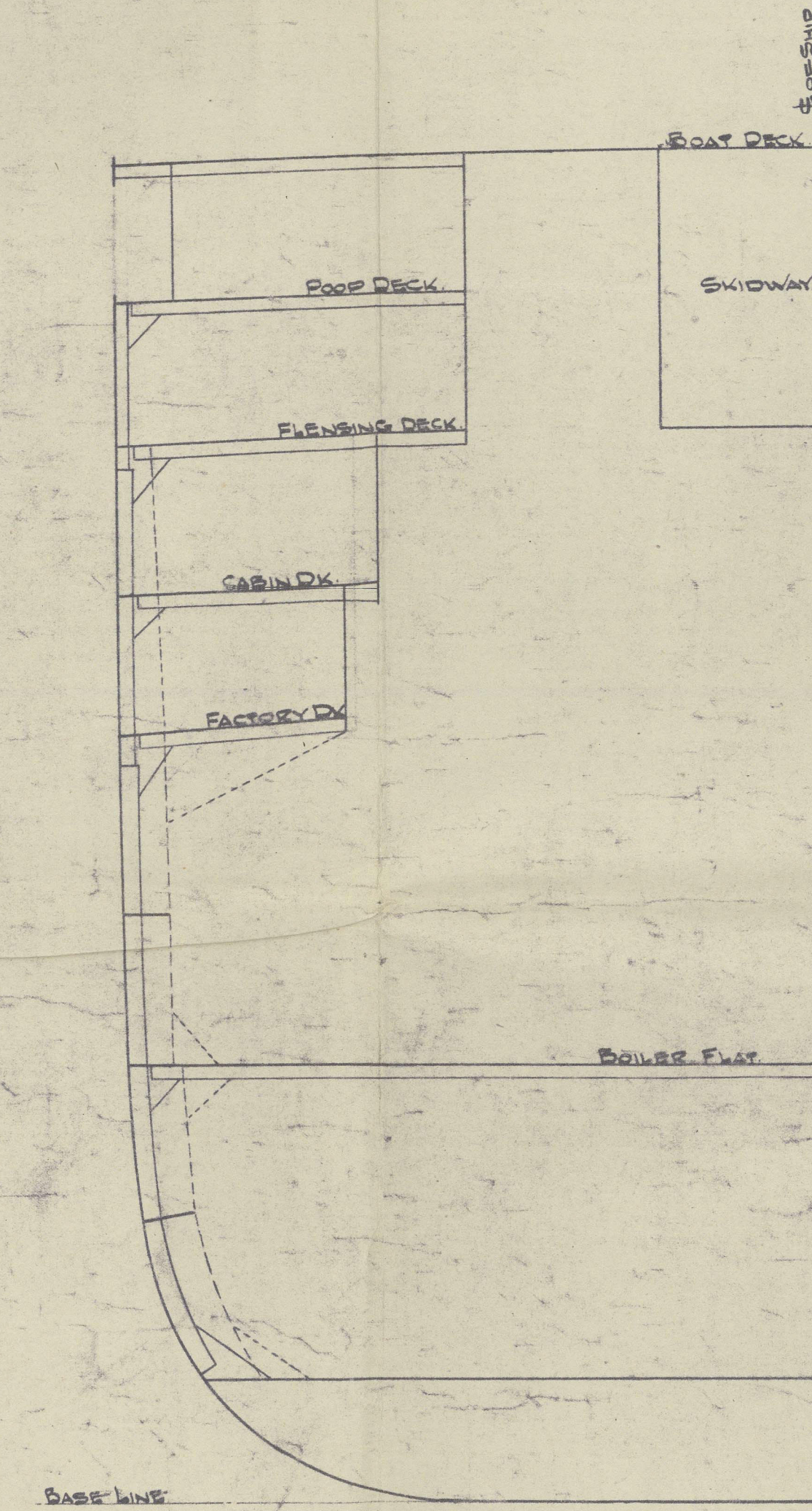
FRAMES TO FACTORY DECK
12'-2 1/2" x 50" B.A.
INTERMEDIATE FRAMES TO FACTORY DECK
12'-2 1/2" x 50" B.A.
FRAMES FACTORY DECK TO FLUSHING DECK
10'-2 1/2" x 44" B.A. SCARFED.

FRAMES ABOVE FLUSHING DECK 6'-2 1/2" x 44" B.A. SCARFED.

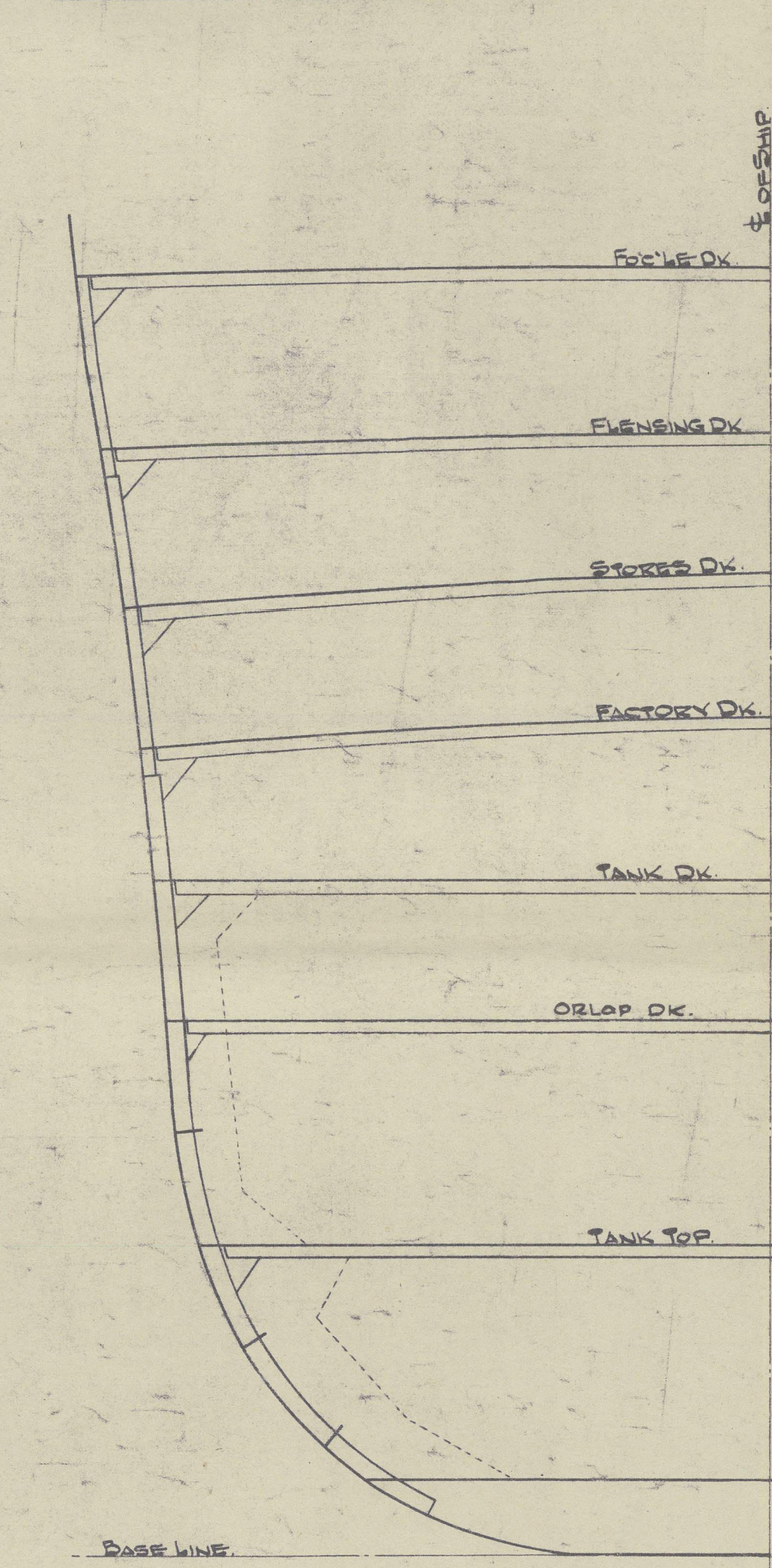
TEST HEAD FOR DEEP TANKS
ASSUMED AT STORE DECK.



SECTION ABOUT FR. 90A.



SECTION ABOUT FR. 70A.



SECTION ABOUT FR. 90F.

2A

HARLAND & WOLFF LTD.
BELFAST

No. 1384 "JUAN PERON" RECORDS DEPT.
★ LONDON

TITLE FRAMING PROFILE

"AS FITTED"

DATE APPROVED VERIFIED 20/7/51

4

BELFAST FREEBOARD C.11 (F.136)

Belfast Report No. 15293



© 2021

Lloyd's Register
Foundation

014023-014031-0169