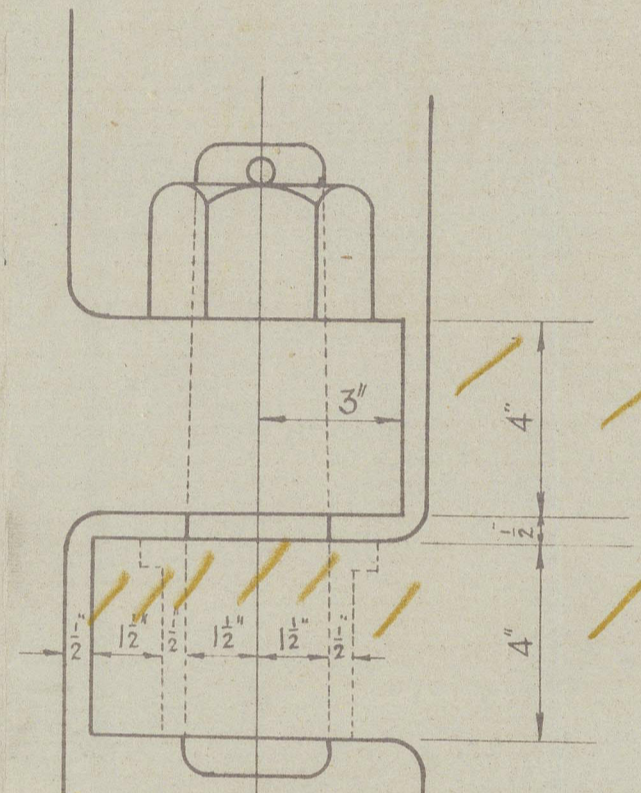
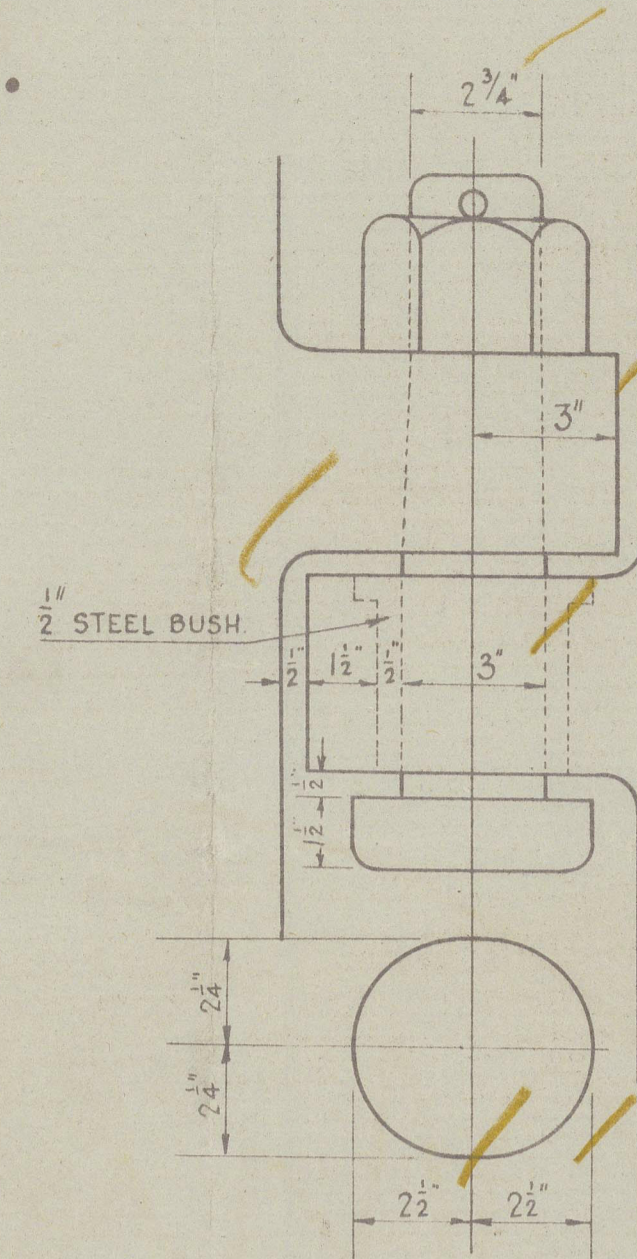


STERNFRAME & RUDDER.

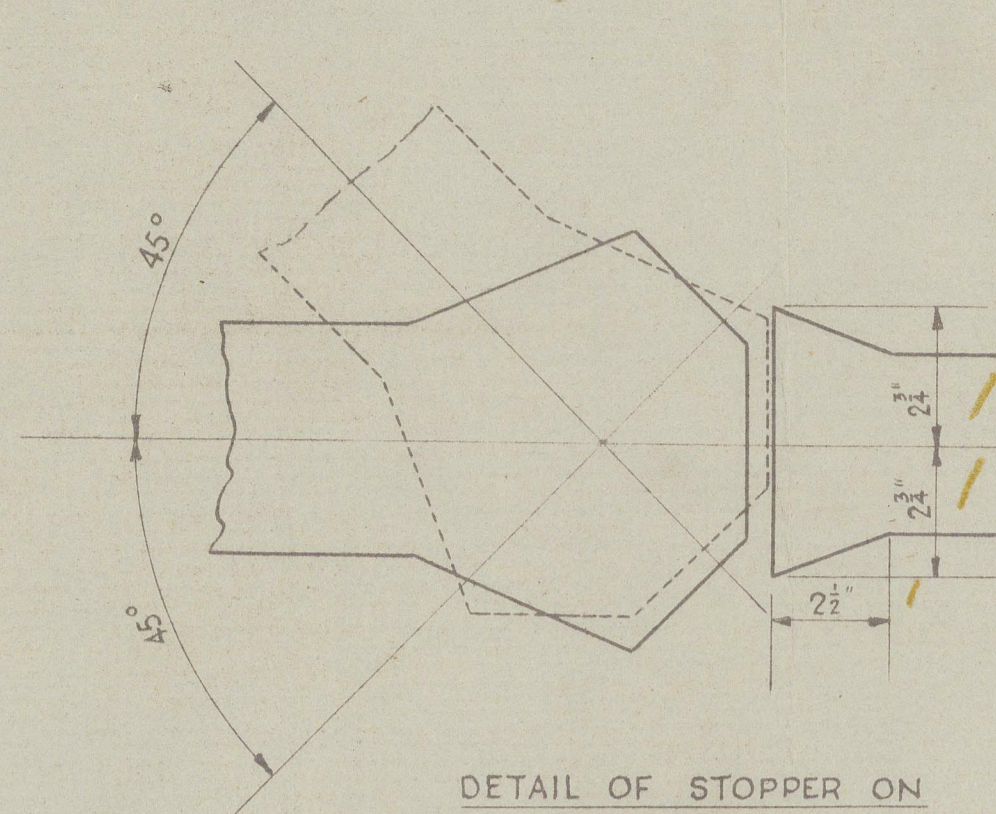
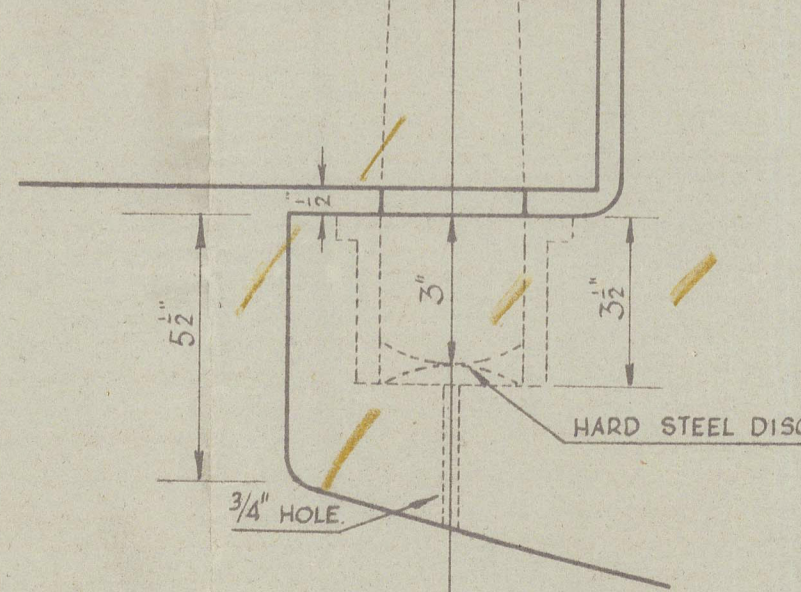
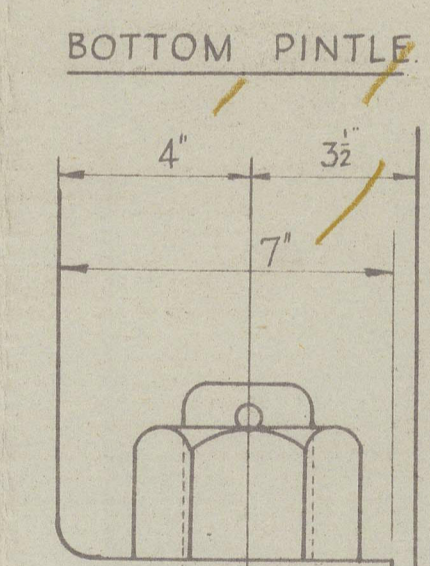
DETAILS - 3 IN. = 1 FOOT.



TWO UPPER PINTLES



THIRD PINTLE

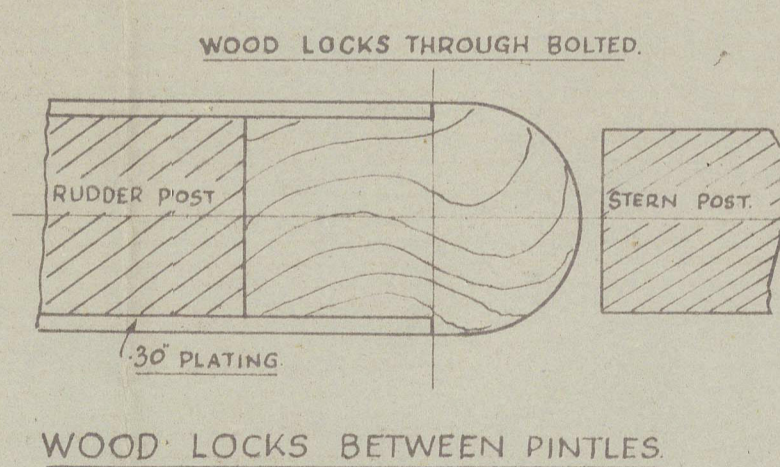


DETAIL OF STOPPER ON
TOP GUDGEONS.

No	ORDS	$\frac{S}{M}$	FUNCTION FOR A	ORDS ²	$\frac{S}{M}$	FUNCTION FOR C.G.
1	1.25	$\frac{1}{2}$.62	1.56	$\frac{1}{2}$.78
1 $\frac{1}{2}$	3.45	2	6.90	11.90	2	23.80
2	4.37	1 $\frac{1}{2}$	6.56	19.09	1 $\frac{1}{2}$	28.64
3	4.75	4	19.00	22.56	4	90.24
4	4.41	1 $\frac{1}{2}$	6.62	19.45	1 $\frac{1}{2}$	29.17
4 $\frac{1}{2}$	3.67	2	7.34	13.47	2	26.94
5	.50	$\frac{1}{2}$.25	.25	$\frac{1}{2}$.12
47.29						199.69


$$\begin{aligned} \text{AREA} &= 47.29 \text{ m}^2 \\ \text{C. of G.} &= \frac{199.69}{47.29 \times 2} = 2.1 \\ D &= 2.1 + .33 = 2.43 \\ A \times D &= 47.29 \times 2.43 = 114.9. \end{aligned}$$

SPEED NOT EXCEEDING
12 KNOTS.



SECTION AT 'A-A'


27:2.45



COCHRANE & SONS LTD

YARD N° 1312-13.

STERNFRAME & RUDDER

Danube VII 

Lloyd's Register
014023-014031-0150

014023-014031-0150