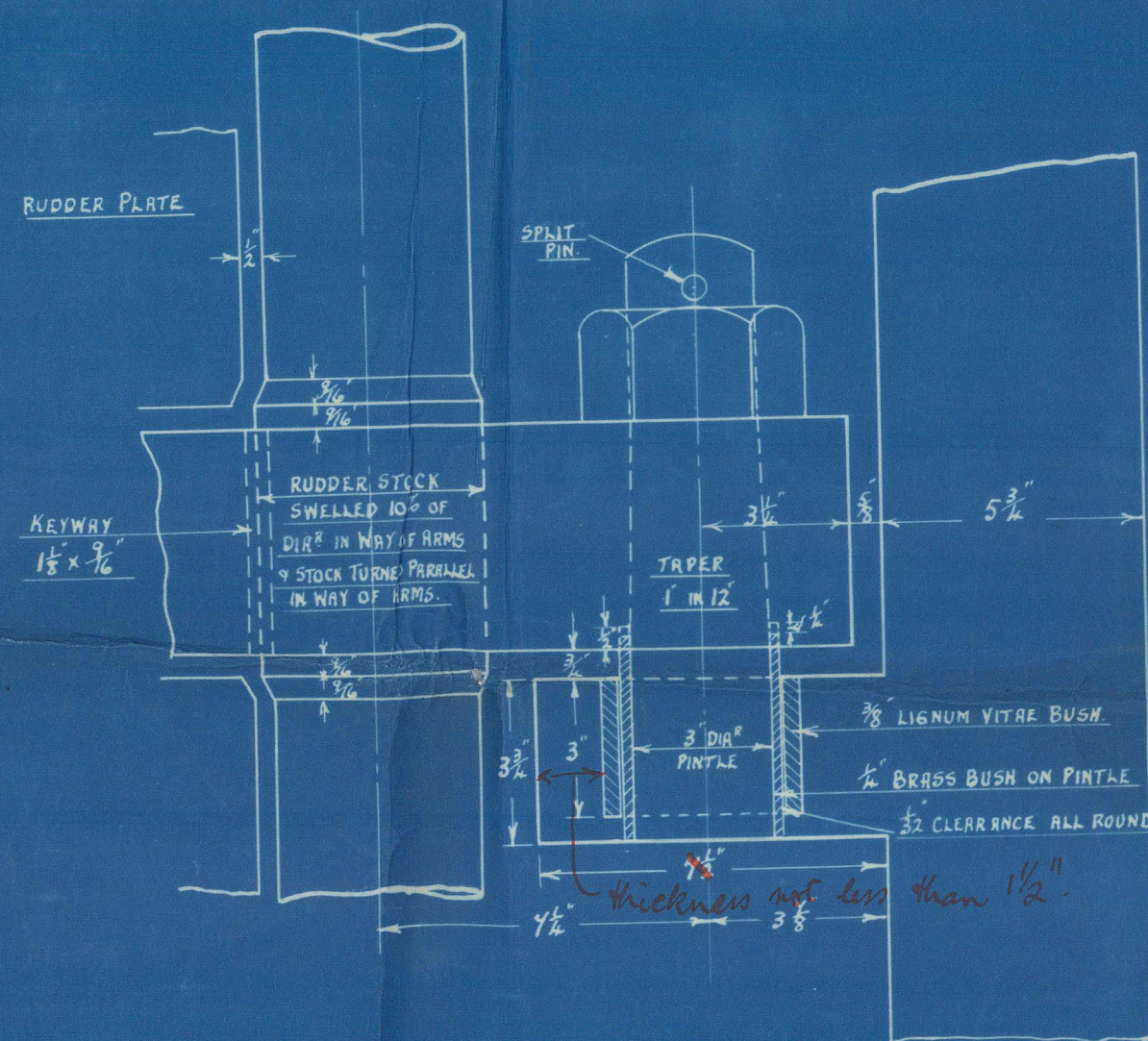


S.S. No. 12. RUDDER & STERNFRAME.

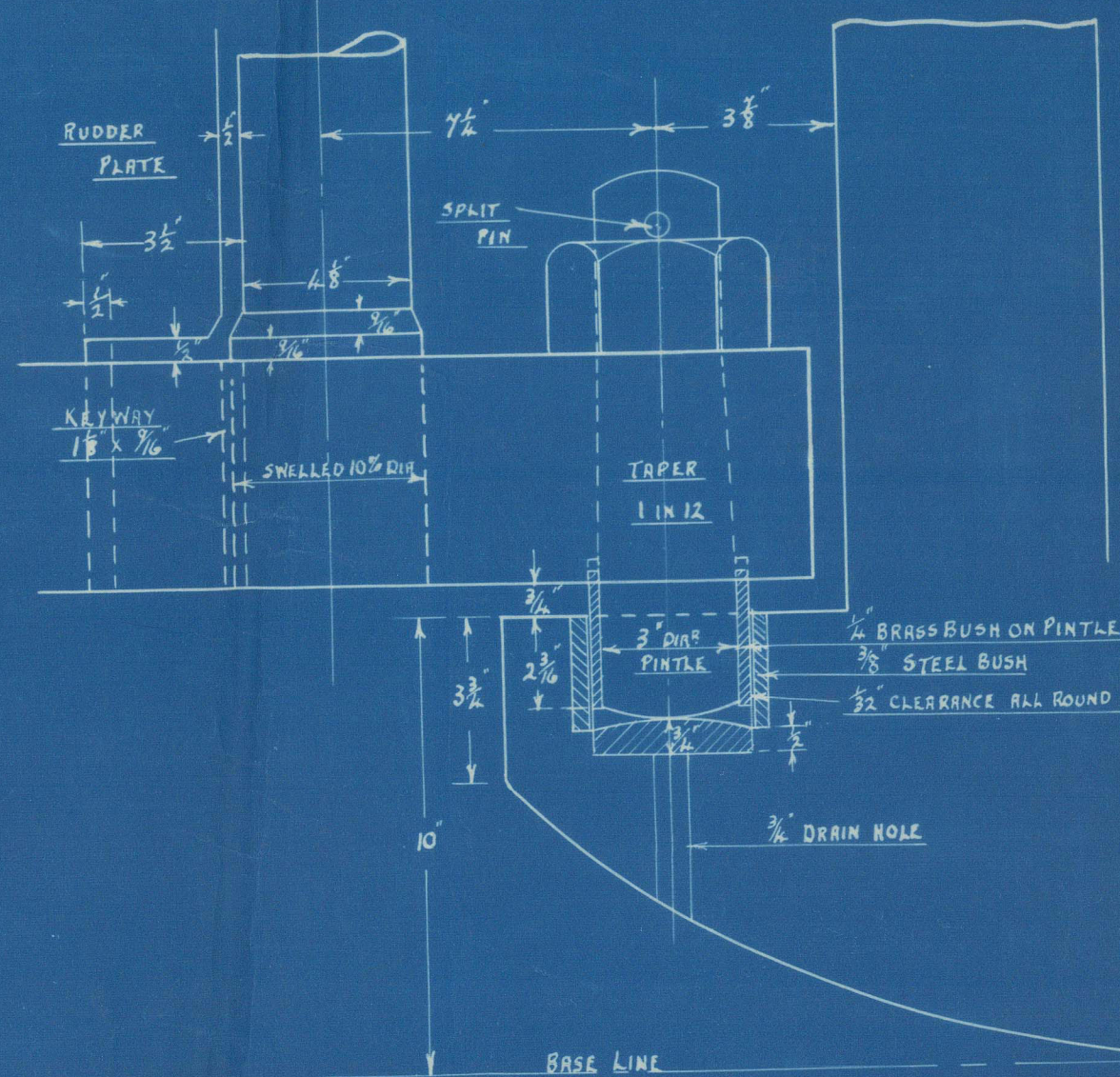
SCALES AS MARKED

RUDDER POST & STERNFRAME TO BE OF FORGED STEEL STOCK TO BE IN TWO PARTS CONNECTED AS SHOWN BY A HORIZONTAL COUPLING HAVING SIX $1\frac{1}{2}$ " FITTED BOLTS SECURED BY NUTS & SPLIT PINS, & HAVING FULL LENGTH KEY. BOLTS TO BE PUT IN FROM TOP. RUDDER FRAME FORGED IRON OR STEEL. ARMS TO BE FORGED SEPARATELY FROM STOCK & SHOWN & KEYS TO SAME. GUDGEONS TO TAKE PINTLES TO FORM SOLID PART OF POST, & BUSHED WITH LIGNUM VITAE. PINTLES TO BE OF STEEL LET INTO GUDGEON ON RUDDER WITH A TAPER & SECURED ON TOP WITH HEXAGONAL NUTS, & SPLIT PINS FITTED TO PREVENT THESE SLACKENING BACK. PINTLES TO BE SHEATHED WITH BRASS. STOPPER TO BE FITTED ON 2ND TOP ARM. LOWER GUDGEON TO HAVE A STEEL PORTABLE CUP. COUPLINGS TO BE ARRANGED SO THAT RUDDER CAN BE UNSHIPPIED WHEN AFLOAT. RUDDER ARMS TO BE FITTED ON ALTERNATE SIDES OF RUDDER PLATE. CARE TO BE TAKEN THAT THE C LINES OF PINTLES & RUDDER STOCK ARE IN A PERFECTLY STRAIGHT LINE BOTH FORE & AFT & AT RIGHT ANGLES, & THAT THE SURFACES OF THE RUDDER ARMS ARE IN ONE TRUE PLANE TO RECEIVE RUDDER PLATE. TAYLOR PALLISTER RUDDER CARRIER FITTED AT POOP DECK. DEEP STUFFING BOX FITTED IN POOP TWELVE" DE" WITH DECK GLAND. STOCK INCREASED 5% FOR FULL DEPTH OF BOX. BOX TO BE EXTRA DEEP & FITTED WITH LIGNUM VITAE BUSH. PORTABLE STEEL PLATE ON TOP OF STEERING GEAR HOUSE FOR UNSHIPPIING RUDDER.

Forgings to be tested as required by the Rules.



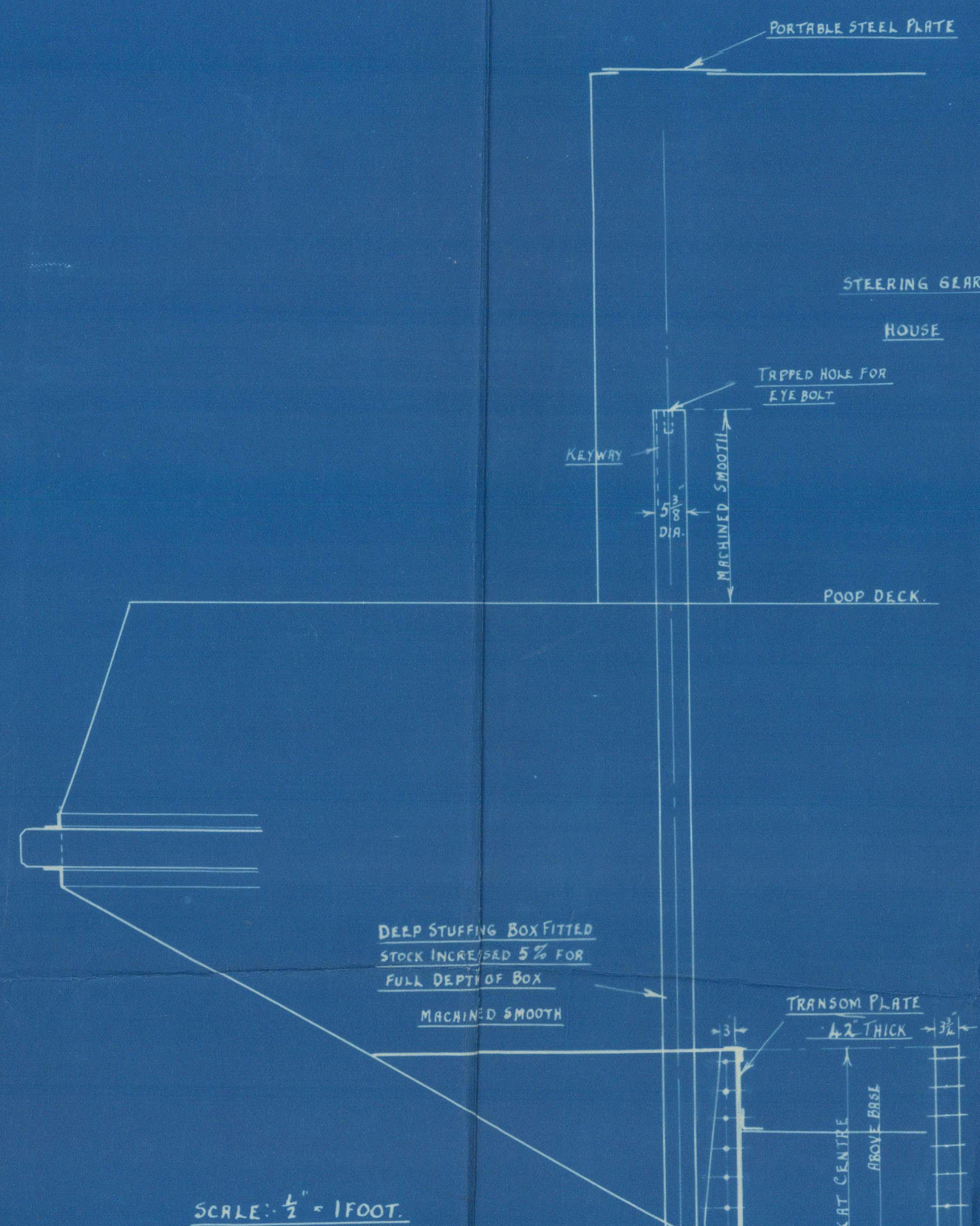
DETAIL OF PINTLES.
SCALE: 3" = 1 FOOT.



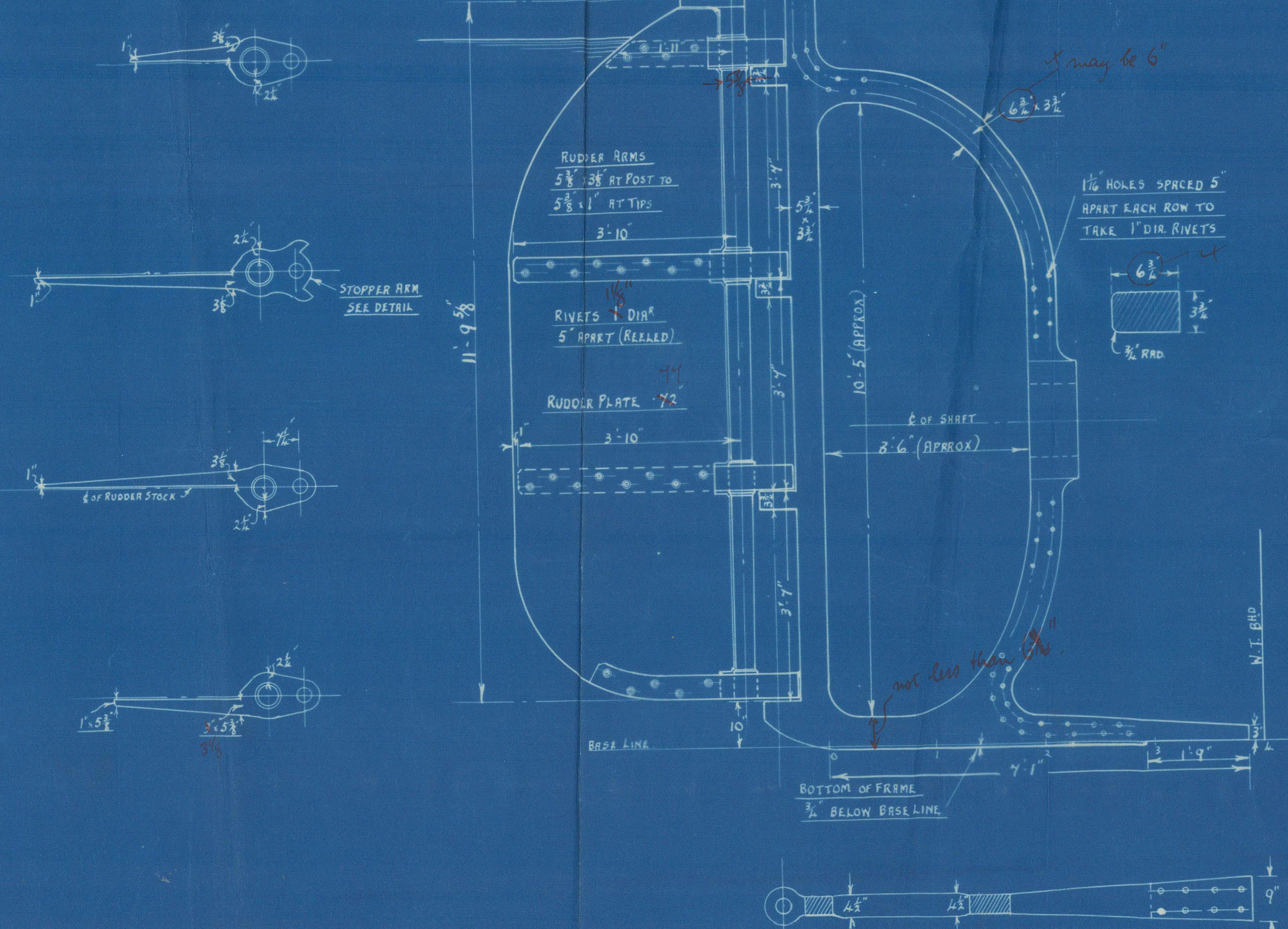
DETAIL OF BOTTOM PINTLE.
SCALE: 3" = 1 FOOT.

STERN AND RUDDER FRAMES TO PASS LLOYD'S SURVEY

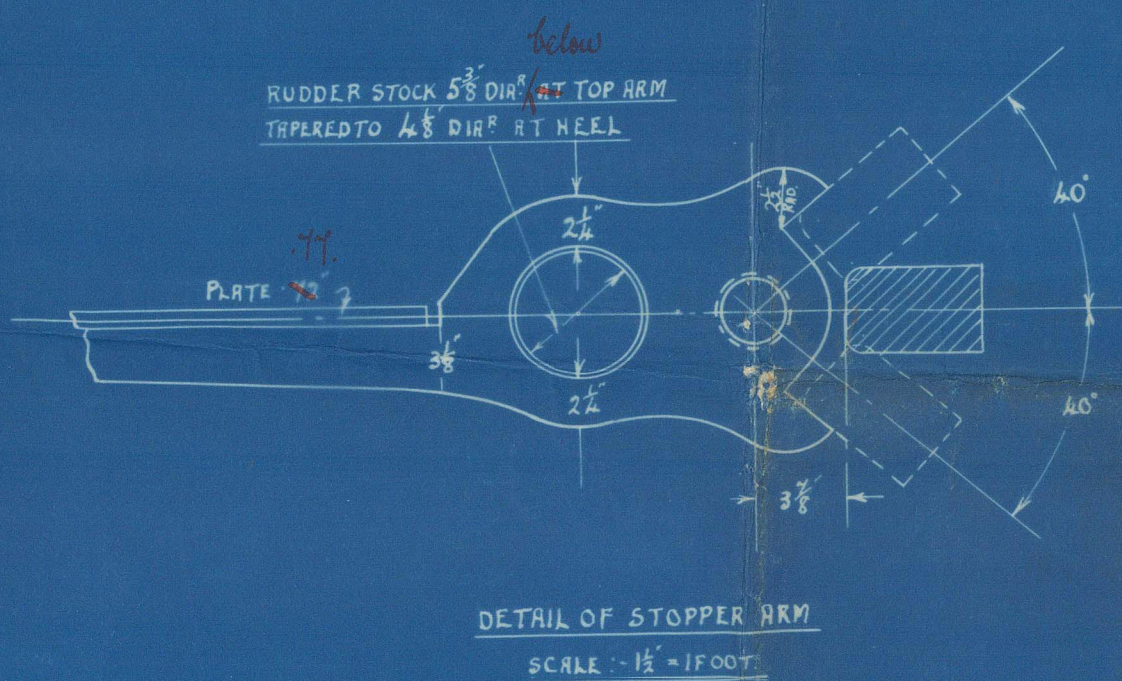
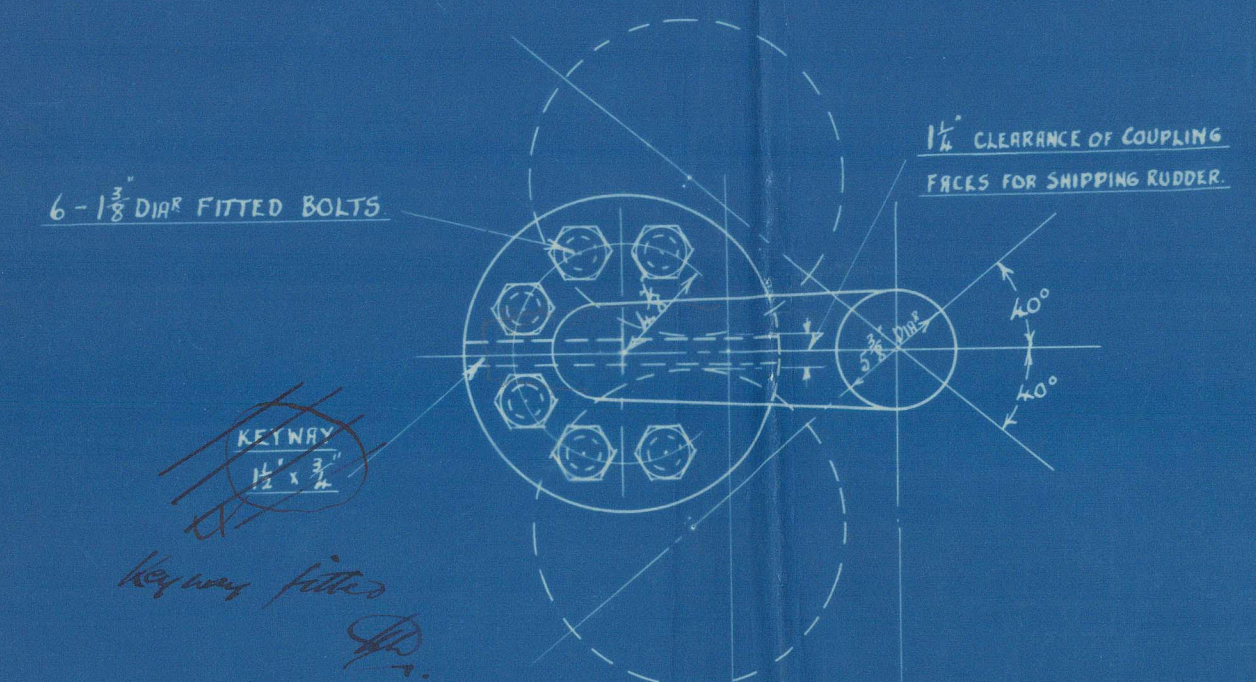
SPEED OF SHIP = 10 KNOTS
AREA OF RUDDER = 43.50 FT.
A x D = 98.04
DIA² OF RUDDER HEAD = $4\frac{1}{2} \times 10\frac{1}{2} = 58\frac{1}{4}$



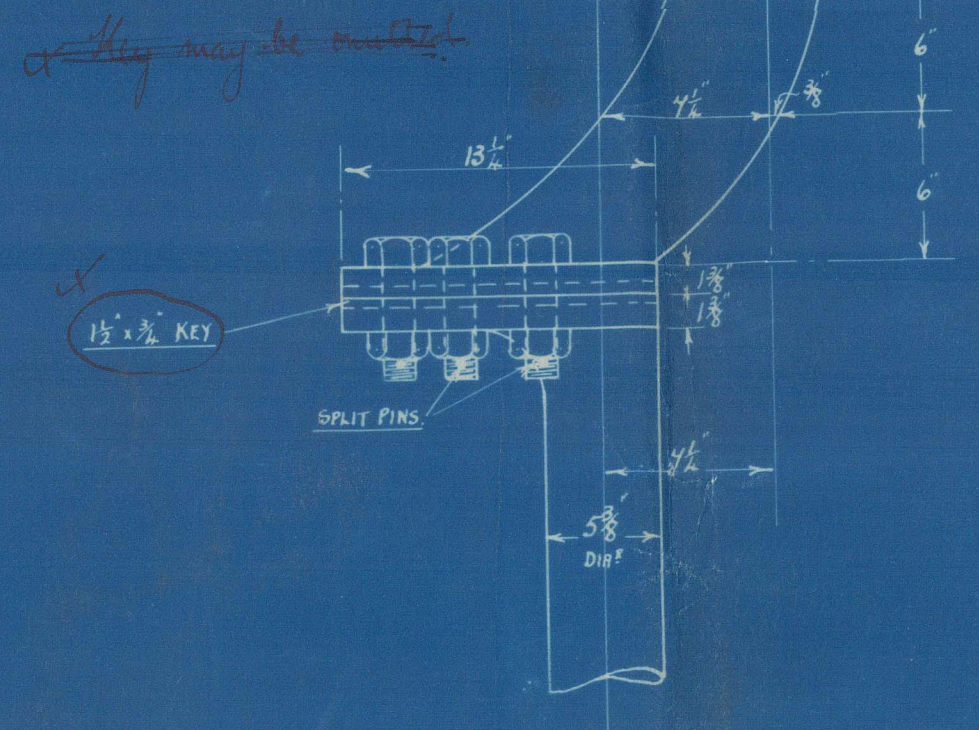
SCALE: 1/2" = 1 FOOT.



ALL NUTS, BOLTS, SPLIT PINS, BUSHES, ETC., SUPPLIED BY CONTRACTOR. RUDDER FRAME TO BE DRILLED COMPLETE & HOLES TO BE COUNTERSUNK ON OUTER SIDE OF ARMS. RUDDER COUPLING BOLTS, ALSO PINTLES, TO HAVE SPLIT PINS FITTED. RUDDER SWINGS 40° ON EACH SIDE OF CENTRE LINE OF SHIP. POSITION OF RUDDER ARMS TO SUIT GUDGEONS ON STERNFRAME. MAKERS OF RUDDER FRAME TO SUPPLY GAUGES IN DUPLICATE OF RUDDER STOCK AND KEYWAYS. ALL NECESSARY MACHINING ON RUDDER & STERNFRAME TO BE DONE BY CONTRACTOR.



DETAIL OF STOPPER ARM
SCALE: 1/2" = 1 FOOT.



DETAIL OF COUPLING
SCALE: 1/2" = 1 FOOT.

APPROVED
LLOYD'S REGISTER OF SHIPPING
MONTGOMERY & CO.
22, 10, 75



Stemframe & Rudder

S/S. Pass of Melfort

GLASGOW REPORT No 45890



© 2021

Lloyd's Register
Foundation

013972 - 013979 - 0226