

T. S. M. V. "CARISBROOKE CASTLE"
SRX. 17540. JOB No 3.

ADDITIONAL WATER BALLAST &
FRESH WATER TANKS AFT.

SCALE $\frac{1}{2}'' = 1 \text{ FOOT}$

CAPACITIES			
EXISTING	BALLAST TANK	8 TONS	
ADDITIONAL	" "	14 TONS	
TOTAL WATER BALLAST		=	22 TONS
NEW	FRESH WATER TANK	=	10 TONS
ADDITIONAL	STEEL WORK	=	3 TONS
TOTAL		=	35 TONS

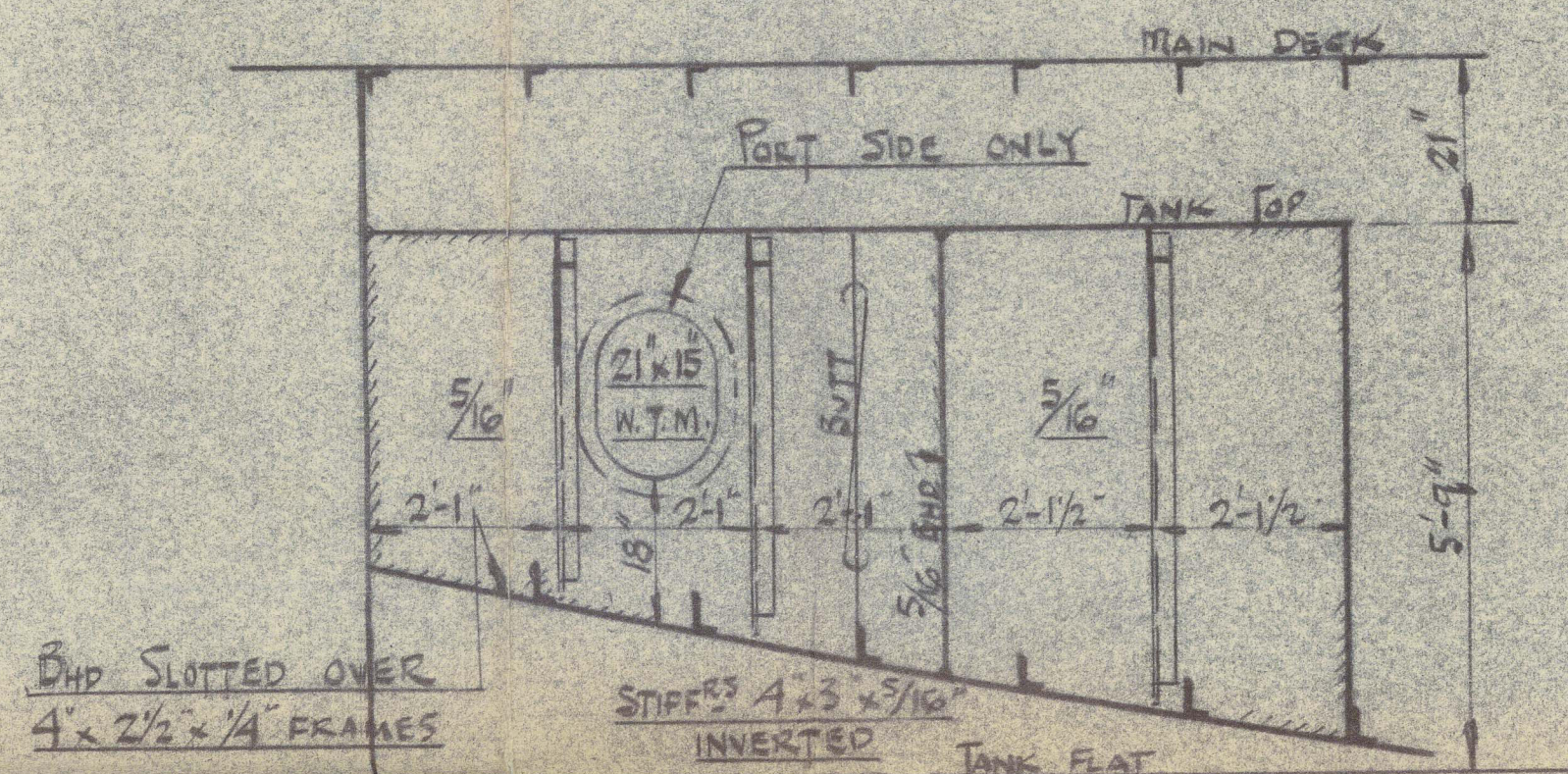
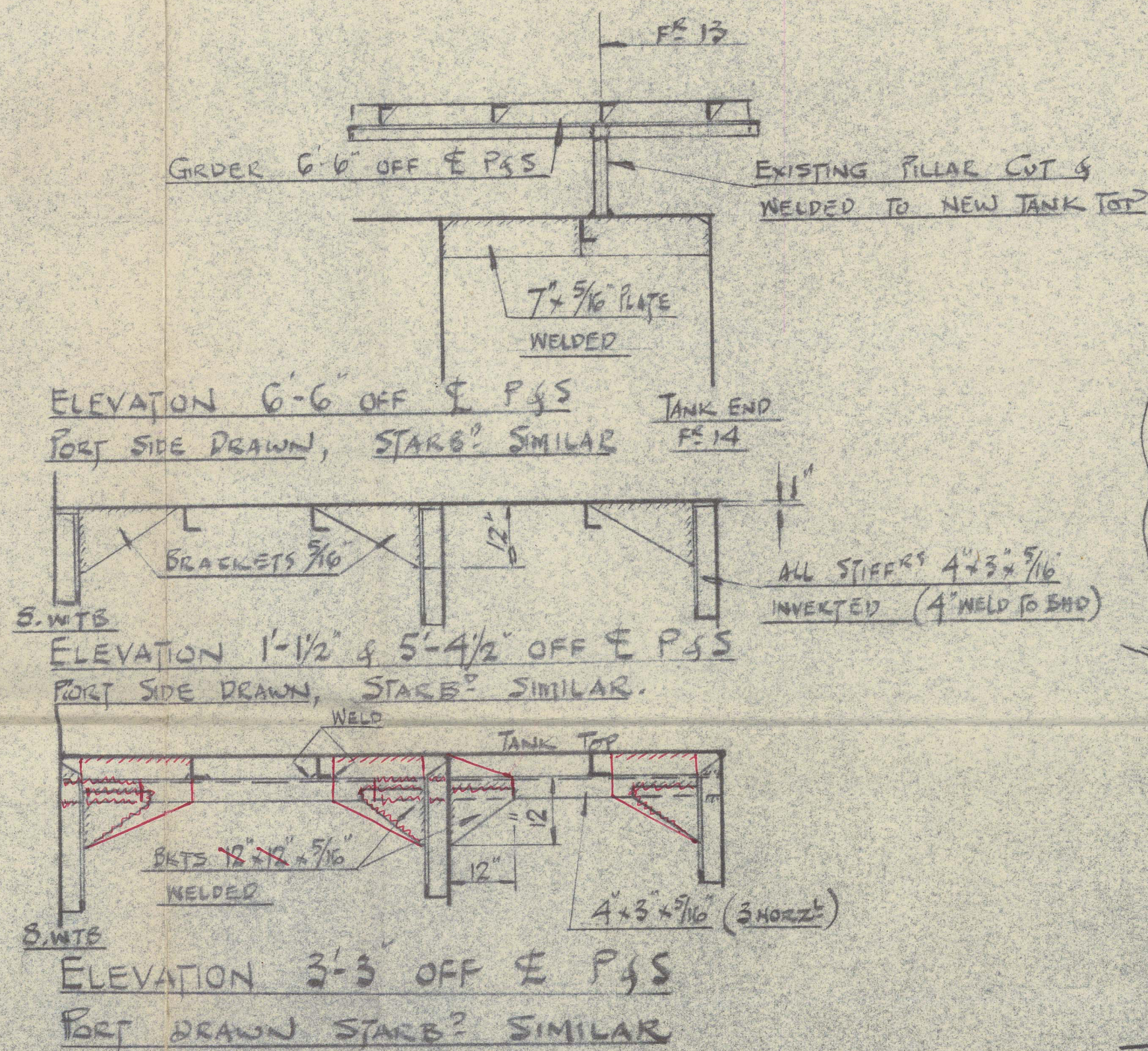
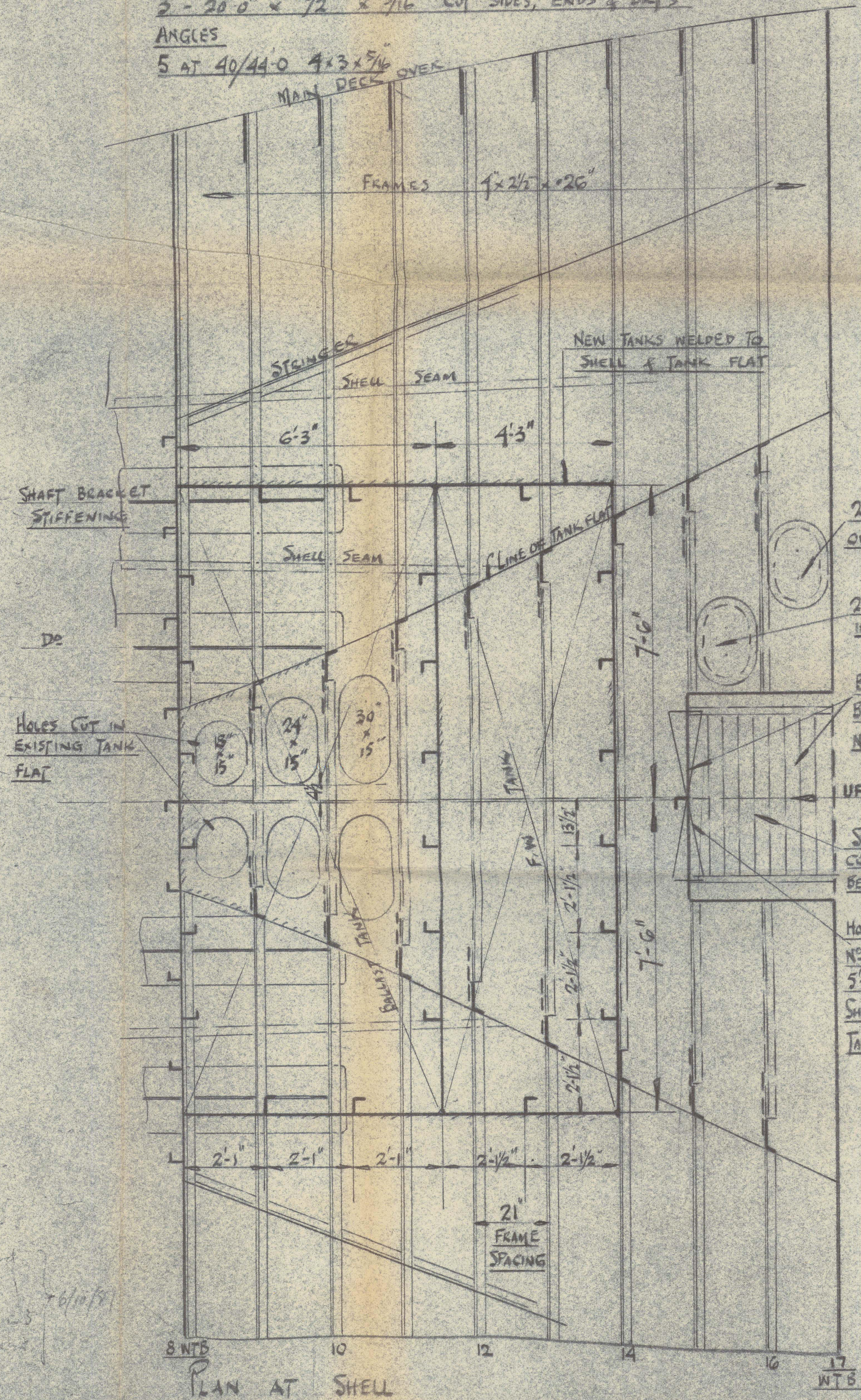
MATERIAL EX YARD STOCK

PLATE

2 - 8'-3" x 67" x 5/16" TOP PLATING
2 - 8'-0" x 67" x 5/16" " "
3 - 20'-0" x 72" x 5/16" CUT SIDES, ENDS & BATS

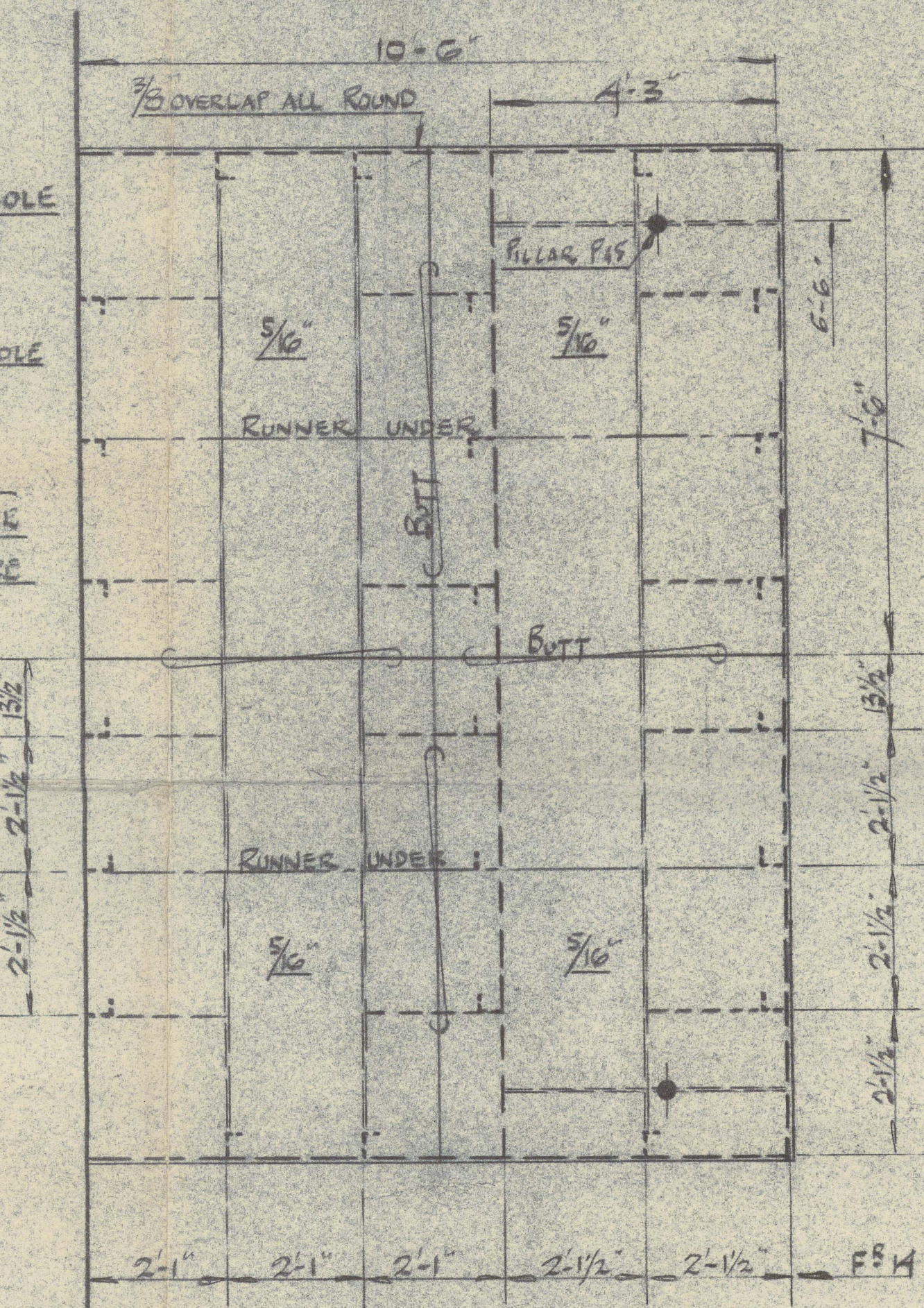
ANGLES

ANGLES
5 AT 40/44-0 4x3x^{5/16} OVER
DECK

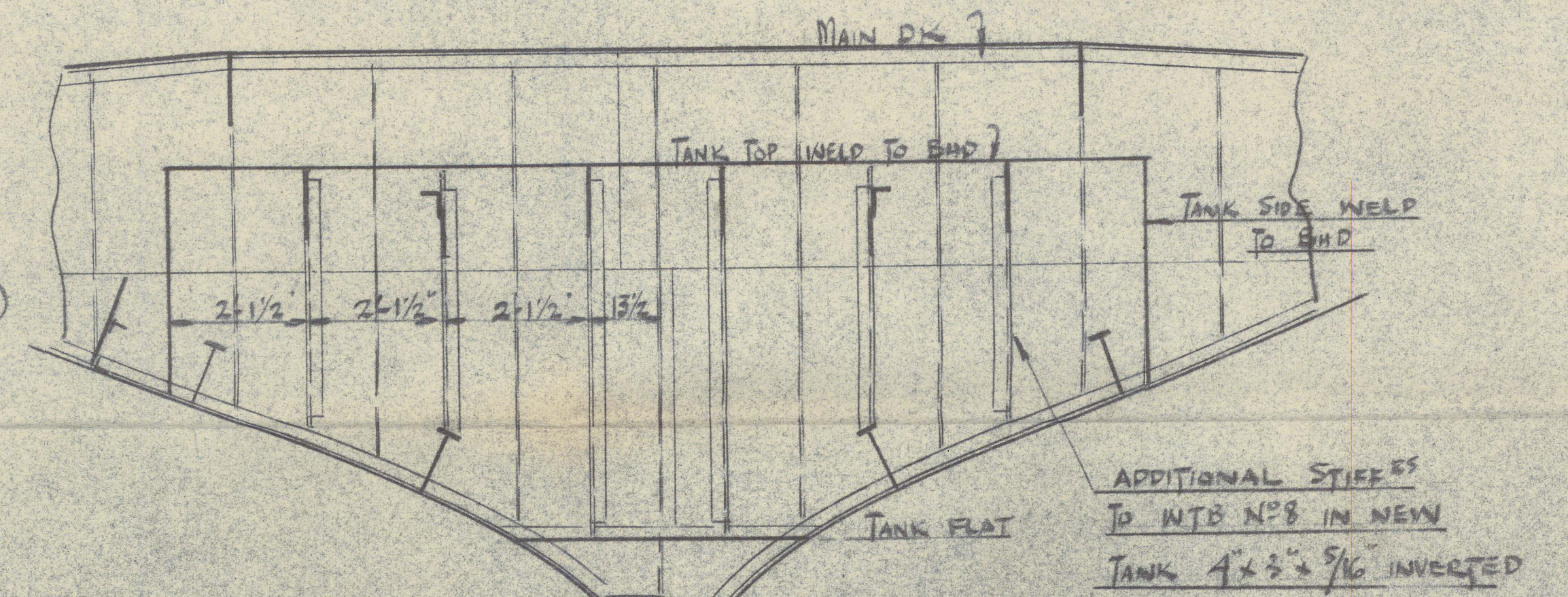


W. T. BULKHEAD 7'-6" OFF E PYS

PORT SIDE DRAWN, STARS? SIMILAR

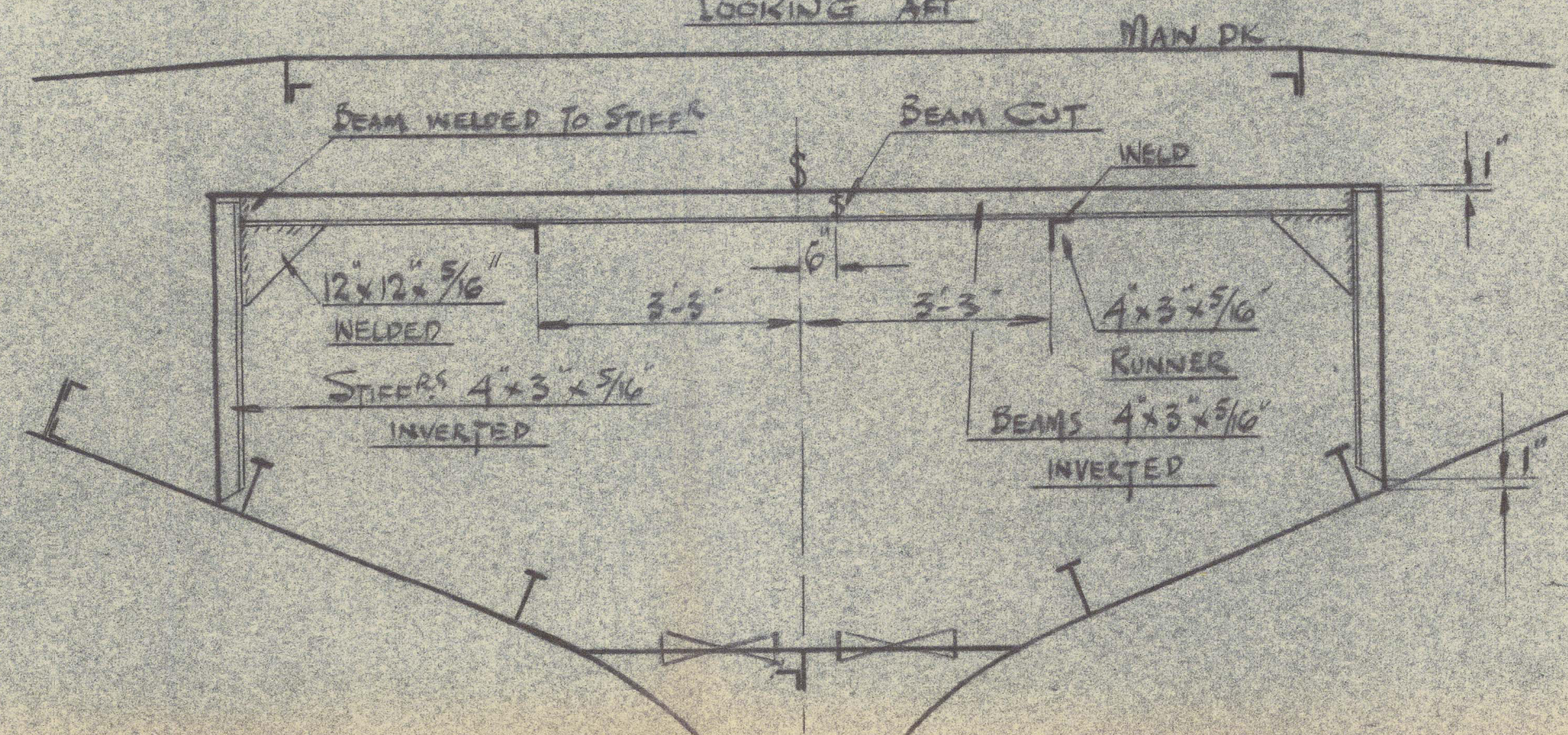


PLAN AT TOP OF TANKS



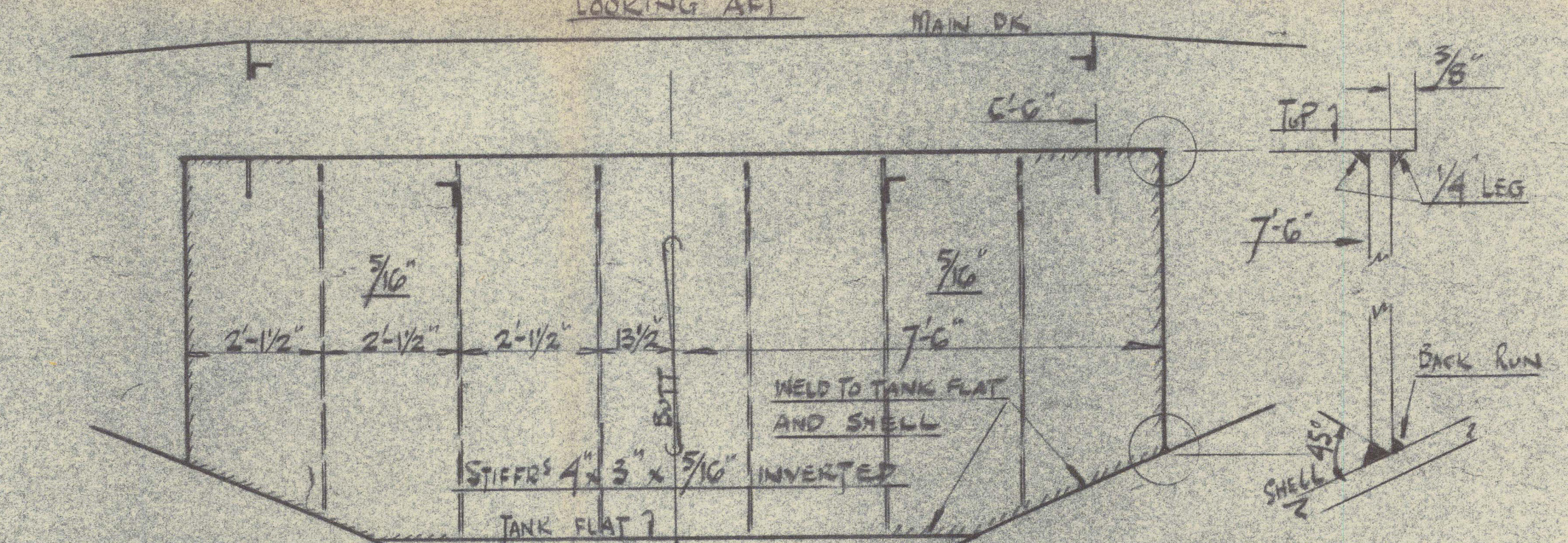
SECTION AT W.T.B. № 8

LOOKING AFT



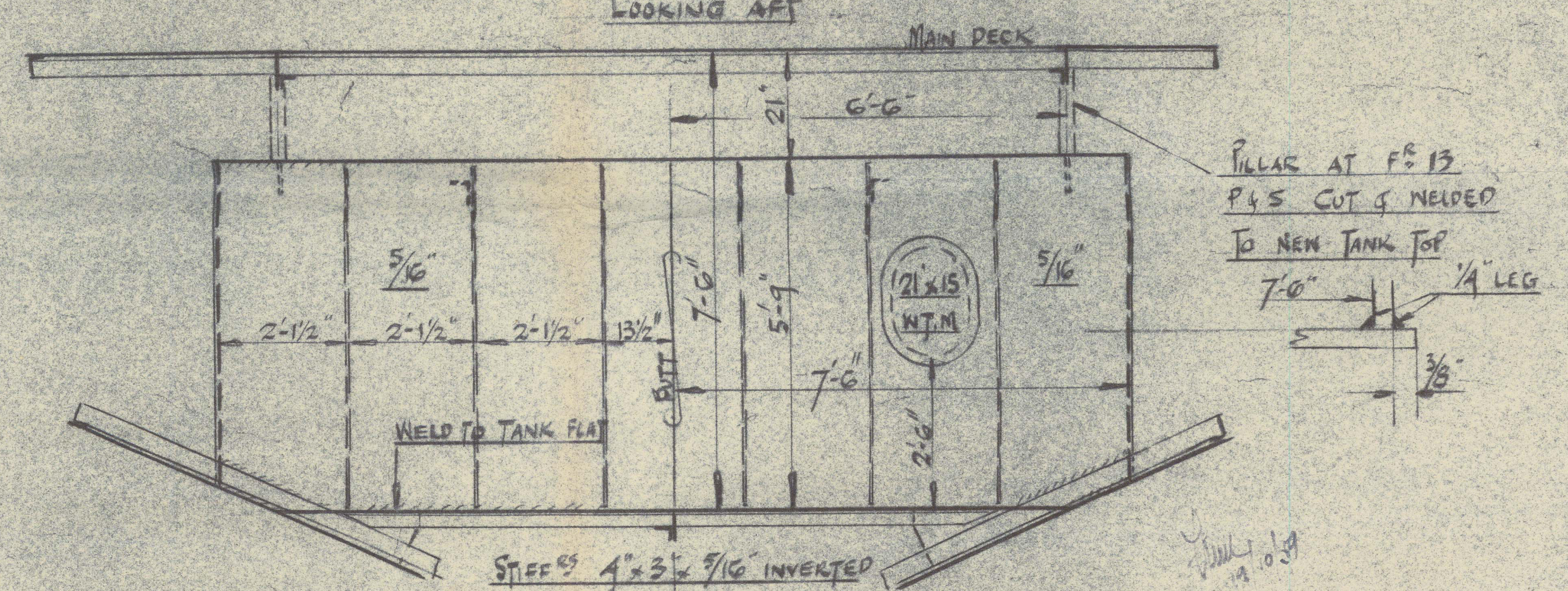
SECTION 2'-1" FORD OF WTB. S.

LOOKING AFT



W.T. BULKHEAD 9" AFT OF FR 12

LOOKING AFT

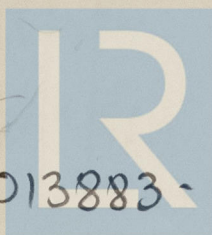


W.T. BULKHEAD AT FR 14

LOOKING AFT

NAME	M.V. Carlsbrooke Castle		
SOUTHAMPTON REPORT No.	25860		
PLAN	Additional W.B + FW tanks aft		
BUILDERS	—		
YARD No.	—	12/59	

SS/MS "	
TO ACCOUNTANT	Rpt. No.
Dated	
SUBJECT:-	



© 2021

Lloyd's Register
Foundation

013881 - 013883 - 0002