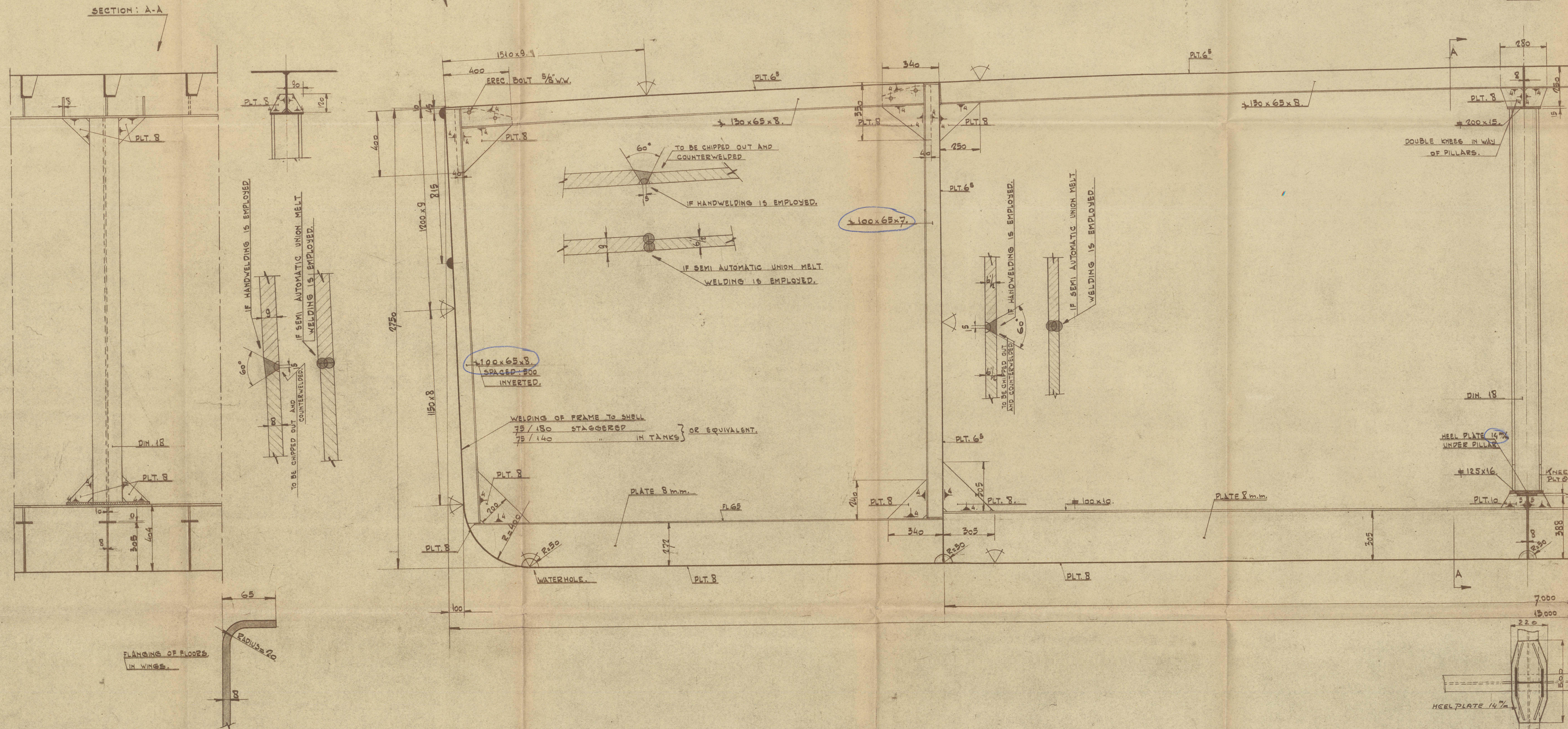


Technical drawing of a mechanical part, likely a valve or plug, showing a cross-section. The part has a semi-circular end with a diameter of 76 mm and a length of 38 mm. The main body is cylindrical with a diameter of 9 mm. The drawing includes a 20-degree angle and a 9 mm dimension for the main body.

WELDING.

Figure 10 consists of four horizontal cross-sectional diagrams illustrating different structural components of a ship's hull, all with a common stiffener spacing of $A = 4 \text{ m.m.}$.

- BULKHEAD STIFFENERS IN WATERTANKS:** The top diagram shows a stiffener with a total height of 300. It is divided into three sections: a top flange of 200, a central web of 100, and a bottom flange of 100.
- BULKHEAD STIFFENERS OUT OF WATERTANKS:** The second diagram shows a stiffener with a total height of 300. It is divided into four sections: a top flange of 100, a web of 160, a central stiffener of 160, and a bottom flange of 100.
- FLOORS TO BOTTOMPLATING:** The third diagram shows a stiffener with a total height of 300. It is divided into three sections: a top flange of 200, a central web of 100, and a bottom flange of 100.
- DECKBEAMS TO DECKPLATING:** The bottom diagram shows a stiffener with a total height of 300. It is divided into four sections: a top flange of 100, a web of 160, a central stiffener of 160, and a bottom flange of 100.



1	BOWER ANCHOR	STOCKLESS	1,000 KG.
1	AFT	" "	1,500 KG.
1	LENGTH OF GOMETRES	ANCHOR STUD LINK-CHAIN	1 1/4 \$
2	LENGTHS	" " " "	1" \$
4	WARPS	" " " " STEEL WIRE ROPE	7/8 \$

[illegible]

AS APPROVED BY
LLOYD'S REGISTER

9-12-1952.

DEVIATION FROM APPROVED PLAN
marked or ringed
blue on white yellow on blue.
Approved by local Surveyor
or by: NONE
LLOYD'S REGISTER HOLLAND

"KIZILIRMAK" and "YEŞİLIRMAK"

POS	Aant	Omschrijving	Mod.	Mat.	Const.	Mech.	B.S.
NAS		NAS		N.A.V.			

ING TO
STERDAM REPORT No 7 38539 A 1024 (SHELLPLATING)
N.V. NEDERLANDSE KRAANBOUW 1024 B.L.I. (DECKPLAN)
NETHERLANDS CRANE BUILDING COMP. LTD.
HILVERSUM

N. K.M.	N.V. NEDERLANDSE KRAANBOUW MIJ. - UTRECHT
------------	---

Schaal	1:10	NAV 1024	27-10-54
--------	------	----------	----------

▽ Grof bewerkt **MIDELHO SECTION**

MIDSHIP SECTION.

Zeer glad bew.		60 TONS		SHEERLEGS	
Legg.	I				

013783-013793-0121 Lloyd's RE
Foundation



*Midship Sect.
"Yesilimak."*

RECORDS DEPT.
LONDON.



© 2021

Lloyd's Register
Foundation

013783-013793-0121