

LLOYD'S REGISTER OF SHIPPING

Index No. _____
(For London Office only.)

NOTE:- THE FREEBOARDS FOR THIS SHIP HAVE BEEN ASSIGNED BY THE JAPANESE GOVERNMENT.

SURVEYS FOR FREEBOARD

(CONDITIONS OF ASSIGNMENT)

EB

972

Ship's Name "GEKKO MARU"

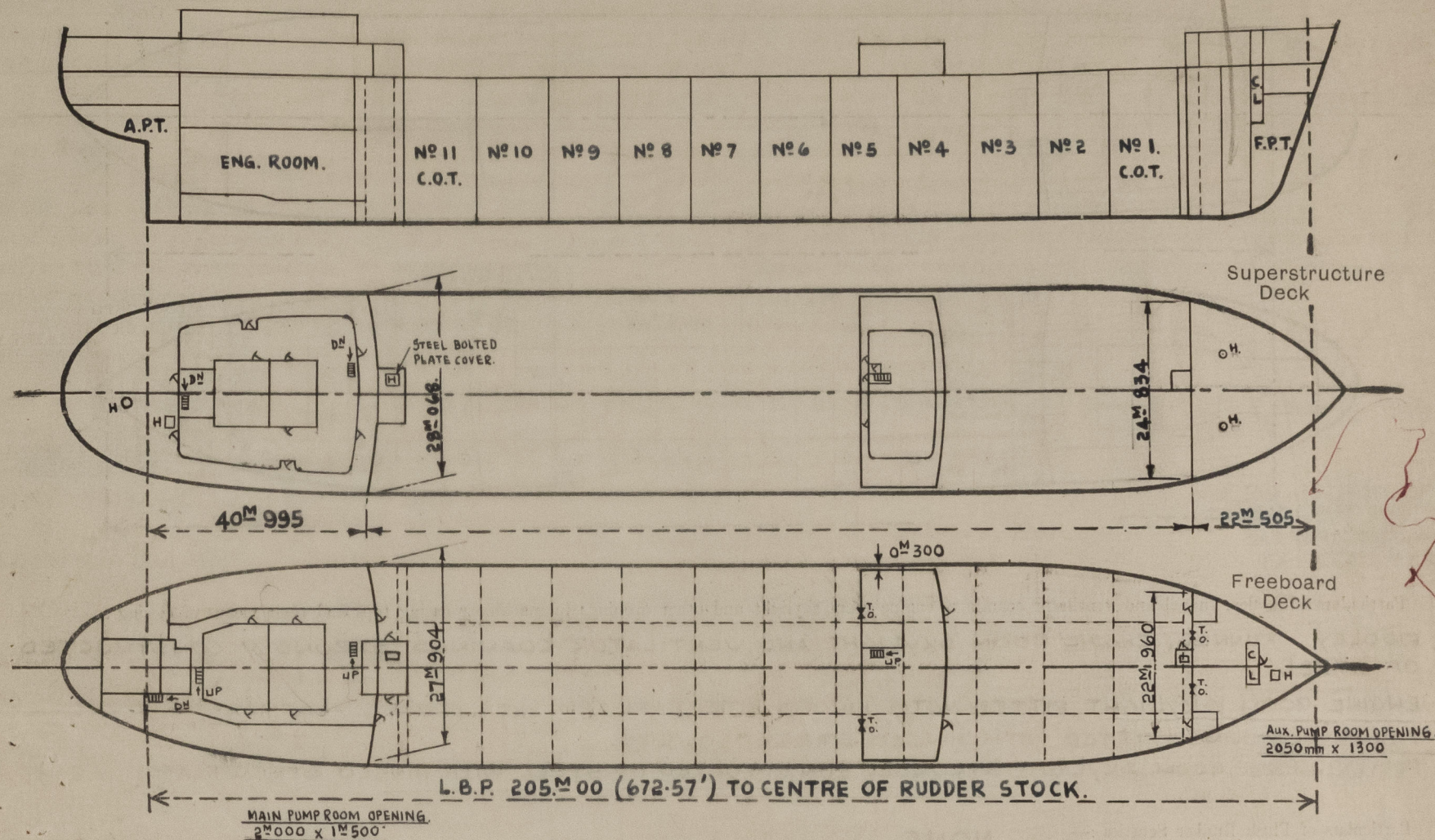
Port of Survey..... **KOBE, JAPAN**Official Number **83499**

Surveyor's Signature. W. M. Henckel and T. C. Marshall

Nationality and Port of Registry.....TOKYO.

Date of Survey **WHILST BUILDING**

Disposition and dimensions of superstructures, trunks, deckhouses, machinery casings and wood sheathing to be inserted in the diagrams and tabular statement :—



Particulars of Superstructures, Trunks, Casings, Deckhouses.

	Coaming	Plating mm.	Stiffeners mm.	Spacing mm.	End Attachments of Stiffeners	Size of Openings mm.	Height of Sills mm.	Height, Beam to Beam mm.
Poop Bulkhead	—	12 ✓	300 x 90 x ¹³ / ₁₇ I.A. ✓	760 ✓	WELDED LUGS TOP & BOTTOM	2@ 700 x 1535	465 ✓	2550
Raised Quarter Deck Bulkhead ...	—	—	—	—	—	—	—	—
Deckhouse Bridge, After Bulkhead	—	8 ✓	125 x 75 x 10 I.A. ✓	633 TO 760 ✓	NIL	2@ 915 x 1565 ✓	385 ✓	2550.
Deckhouse Bridge, Forward Bulkhead	—	12 ✓	300 x 90 x ¹³ / ₁₇ I.A. ✓	760 ✓	WELDED AT TOP WELDED LUGS BTM.	2@ 700 x 1565 ✓ 2@ 700 x 1565 ✓	385 ✓ 385 ✓	2550.
Forecastle Bulkhead	—	8 ✓	100 x 75 x 7 I.A. ✓	760 ✓	NIL ✓	2@ 915 x 1565 ✓	385 ✓	2550
Forecastle Aft Pump Room Entrance.	—	12 ✓	300 x 90 x ¹³ / ₁₇ I.A. ✓	760 TO 800 ✓	WELDED LUGS TOP & BOTTOM	2@ 600 x 1385 ✓	615 ✓	2550.
Forecastle Forward Pump Room Entrance.	—	8 ✓	100 x 75 x 7 I.A. ✓	700 TO 800 ✓	WELDED BKTS. TOP, NIL AT BTM.	1@ 600 x 1385 ✓	615 ✓	2550. ✓
Exposed Machinery Casings on Free- board or Raised Quarter Decks ...	—	—	—	—	—	—	—	—
Exposed Machinery Casings on Super- structure Decks ... POOP ...	—	—	—	—	—	—	—	—
Machinery Casings within Superstructure Appliances	—	8 ✓	100 x 75 x 7 I.A. ✓	733 TO 790 ✓	WELDED BKTS. TOP ✓ NIL AT BOTTOM	4@ 700 x 1672 ✓	270 ✓	2550.
Deckhouse and Pump Room Entrance ON POOP DECK.	—	8 TO 9 ✓	100 x 75 x 7 I.A. ✓ TO 150 x 90 x 9 I.A. ✓	700 TO 800 ✓	WELDED BKTS & LUGS AT TOP. WELDED LUGS AT BOTTOM	2@ 700 x 1535 ✓ 4@ 700 x 1515 ✓	465 ✓ 465 ✓	2550.

Particulars of Closing Appliances (state if capable of being manipulated from both sides).

Poop Bulkhead	2 OFF (700 x 1535) HINGED W.T. STEEL DOORS, OPERABLE BOTH SIDES (CLASS I).	✓
Raised Quarter Deck Bulkhead		
Deckhouse					
Bridge, After Bulkhead	2. OFF (915 x 1565) SLIDING BOLTED STEEL PLATES, SECURED BY 3/4" DIA. HOOKED BOLTS SPACED 13"-16 3/8" APART	
Deckhouse					
Bridge, Forward Bulkhead	2. OFF (700 x 1565) HINGED W.T. STEEL DOORS, OPERABLE BOTH SIDES (CLASS I).	
				2. OFF (700 x 1565) HINGED W.T. STEEL DOORS, OPERABLE BOTH SIDES (CLASS I).	
Forecastle Bulkhead	2. OFF (915 x 1565) SLIDING BOLTED STEEL PLATES, SECURED BY 3/4" DIA. HOOKED BOLTS SPACED 13"-16 3/8" APART.	
Exposed Machinery Casings on Free-board or Raised Quarter Deck		
Exposed Machinery Casings on Superstructure Decks	POOP DECKHOUSE			2. OFF (700 x 1535) HINGED W.T. STEEL DOORS, OPERABLE BOTH SIDES (CLASS I).	
Machinery Casings within Superstructure	POOP			4. OFF (700 x 1515) HINGED STEEL DOORS, OPERABLE BOTH SIDES.	
Appliances	4. OFF (700 x 1672) HINGED PRESSED STEEL DOORS, OPERABLE BOTH SIDES. (CLASS I).	
Deckhouses and Pump Room Entrances					
				AFT PUMP ROOM - 2. OFF (600 x 1385) HINGED W.T. STEEL DOORS, OPERABLE BOTH SIDES (CLASS I)	
				FORW " " - 1 " (" x ") " " " " " " " " " "	

PARTICULARS OF PROTECTION TO OPENINGS, ETC.

HATCHWAYS ON FREEBOARD AND SUPERSTRUCTURE DECKS.										
			FREEBOARD DECK.		POOP DECK.					
Description of Hatchway	CARGO TANK HATCHES. 33 OFF.	OIL FUEL TANK HATCHES. 4 OFF.	C/DAM HATCHES 4 OFF.	HATCH TO BOBUNS STORE.	ROPE HATCH. 2 OFF.	ROPE HATCH.	PROVISION HATCH.	AFTER PUMP ROOM TOP HATCH.
Dimensions of Hatchway	1220 ^{MM} DIA	910 ^{MM} DIA	600 ^{MM} DIA	1000x1000	550 ^{MM} DIA	550 ^{MM} DIA	1200x1200	2000x1500
COAMINGS	Height above Deck	...	760 ^{MM}	760 ^{MM}	615 ^{MM}	235 ^{MM}	615 ^{MM}	465 ^{MM}	465 ^{MM}	235 ^{MM}
	Thickness	{ Sides Ends	11 ^{MM}	11 ^{MM}	11 ^{MM}	8 ^{MM}	11 ^{MM}	11 ^{MM}	11 ^{MM}	11 ^{MM}
	Stiffeners	{ Sides Ends	✓	✓	✓	✓	✓	✓	✓	✓
	Brackets, Stays	{ Sides Ends	✓	✓	✓	✓	✓	✓	✓	✓
HATCH BEAMS	Number	...								
	Spacing	...								
FORE AND AFTERS	Scantling and Sketch	...								
	Bearing Surface	...	✓	✓	✓	✓	✓	✓	✓	✓
HATCH COVERS	Number	...								
	Spacing	...								
	Unsupported Lengths	...								
	Scantling* and Sketch	...	✓	✓	✓	✓	✓	✓	✓	✓
HATCH COVERS	Material	...	ALUMN. 16 ^{MM}	ALUMN. 16 ^{MM}	STEEL 12 ^{MM}	STEEL 6 ^{MM}	STEEL 8 ^{MM}	STEEL 8 ^{MM}	STEEL 6.5 ^{MM}	STEEL 8 ^{MM}
	Thickness	...								
HATCH COVERS	How fitted	...	DISHED TYPE	DISHED TYPE	HINGED.	(STIFFENED)	HINGED	HINGED	(STIFFENED)	(STIFFENED)
	Bearing Surface	...	WITH HINGES & STRONGBACK	WITH HINGES & STRONGBACK	JOINTED O.T. SECURED BY TOGGLE BOLTS	HINGED JOINTED W.T. & SECURED BY 8-7/8 DIA. TOGGLES	JOINTED W.T. & SECURED BY 4-3/8 DIA. TOGGLES	JOINTED W.T. & SECURED BY 4-3/8 DIA. TOGGLES	HINGED JOINTED W.T. SECURED BY 5/8 DIA. BOLTS AT 5 DIA. PITCH	JOINTED W.T. SECURED BY 5/8 DIA. BOLTS AT 5 DIA. PITCH
Spacing of Cleats	WITH TOGGLE	WITH TOGGLE	6-1" DIA	SECURED BY 8-7/8 DIA. TOGGLES	SECURED BY 4-3/8 DIA. TOGGLES	SECURED BY 4-3/8 DIA. TOGGLES	SECURED BY 5/8 DIA. BOLTS AT 5 DIA. PITCH	SECURED BY 5/8 DIA. BOLTS AT 5 DIA. PITCH
Number of Tarpaulins	BOLT AND JOINTED O.T.	BOLT AND JOINTED O.T.	TOGGLE BOLTS	BY 8-7/8 DIA. TOGGLES	BY 4-3/8 DIA. TOGGLES	BY 4-3/8 DIA. TOGGLES	BY 12-7/8 DIA. TOGGLES	BY 5/8 DIA. BOLTS AT 5 DIA. PITCH
*Are wood fore and afters steel shod at all bearing surfaces? ✓ Are battens and wedges efficient and in good condition? ✓ Are tarpaulins in good condition and in accordance with rule requirements? ✓ Are lashings provided in accordance with rule requirements? ✓ Are wood covers fitted with galvanised end bands? ✓										

Particulars of any special features:— (Timber Deck-cargo Fittings, Skylights, Sewage Systems, Ash Ejectors, Rubbish Shoots, etc.)

ULLAGE HOLES ON MAIN TANK HATCH COVERS, OPENING 258^{MM} DIA. WITH 13^{MM} THICK COAMINGS 1050^{MM} ABOVE FREEBOARD DECK, FITTED WITH EFFICIENT ALUMINIUM COVERS 16^{MM} THICK, SECURED BY STRONG CENTRAL STRONGBACK WITH SCREWED TOGGLE.



© 2021

Lloyd's Register Foundation